



Wattage & Color Selectable LED Strip Fixtures

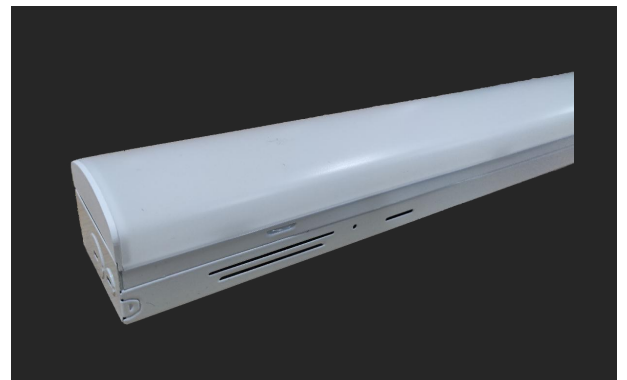


- Luminous part is integrated and fastened to fixture body by snap-locks.
- End-caps adopt integrated bending technique.
- Field-adjustable light output and CCT
- 0-10V dimming
- Bi-level motion sensor or battery backup available*
- Operating temp range -20°C/-4°F to 50°C /122°F

Benefits You Need

Faster surface mounting or row mounting.

The luminous part can be easily removed when install EM or sensor.*



Make you more impressive

Lens & End-Cap customization is available.

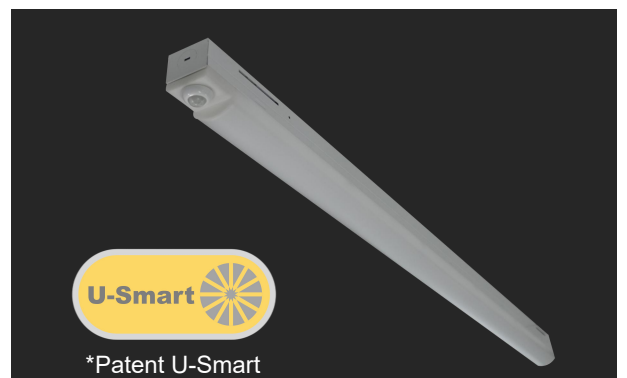
Translucent end-caps and sensor bracket for better visual feeling



Smart is in your hand

Optional plug and play sensors thanks to the U-Smart sensor bracket*.

Both standalone sensor and BLE sensor are available.*



**Optional accessories & features available via Special Order. Call 1-800-624-4488.*

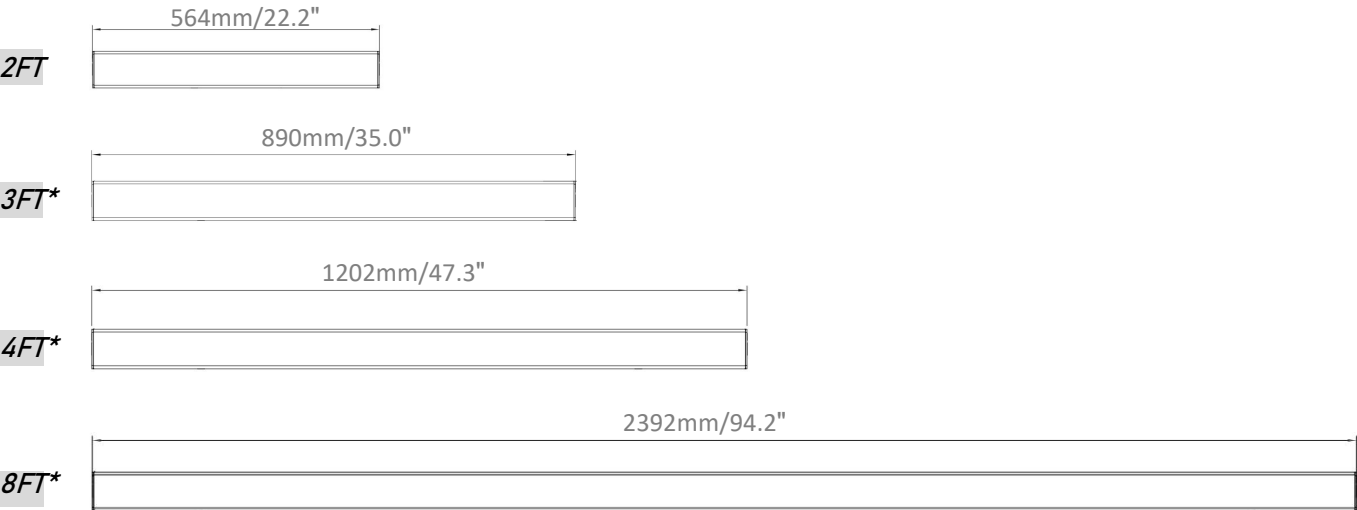
Specifications

| | |
|--|---|
| UL Listing: Suitable for damp locations | Finish: Long lasting white with high durability |
| LEDs: Long-life, high-efficacy, micro-power LEDs | IESNA LM-79 & IESNA LM-80 Testing: Ever-tie LED luminaires have been tested based on IESNA LM-79 and LM-80 by an third-party laboratory |
| Lifespan: Lumen Maintenance, L70 > 100,000 hours | Mounting: Surface mounting by screws(not included) is ready, a pair of cover plate of junction box is included. |
| Dimming Driver: Driver includes dimming control wiring for 0-10V dimming systems. The dim-to-off voltage threshold of optional 12V AUX integrated driver ranges from 0.1V to 0.5V. | Optional accessories(purchased separately): <ul style="list-style-type: none">• Surface mounting kit• Cable suspending mounting kit*• V-hooks & Chain suspending mounting kit*• Row connector*• Right angle connection kit*• Wire guards, square profile or arc profile optional* |
| Housing: Sheet metal stamping | |

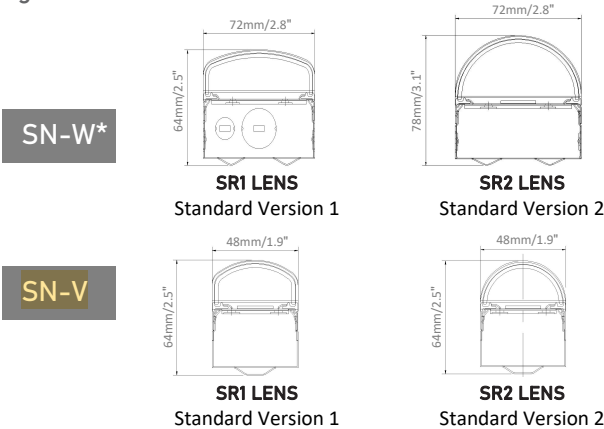
Dimensions and Weights

**Optional accessories, lengths, & widths available via Special Order. Call 1-800-624-4488.*

Length



Height and width



Product Weight(Kg/lb)

| Product series | 2FT | 3FT* | 4FT* | 8FT* |
|----------------|-----------|-----------|-----------|-----------|
| SN-W* | 1.20/2.65 | 1.60/3.53 | 2.00/4.41 | 3.85/8.49 |
| SN-V | 1.10/2.43 | 1.50/3.31 | 1.65/3.64 | 3.20/7.05 |

Performance

Field adjustable Power & CCT

| 2FT | 20W | | |
|----------------|-------|-------|-------|
| | 3500k | 4000K | 5000K |
| Lumens | 2600 | 2620 | 2640 |
| Efficacy(lm/W) | 130 | 131 | 132 |

| 3FT * | 25W | | |
|----------------|-------|-------|-------|
| | 3500K | 4000K | 5000K |
| Lumens | 3250 | 3275 | 3300 |
| Efficacy(lm/W) | 130 | 131 | 132 |

| 4FT * | 30W * | | | 35W * | | | 45W * | | |
|----------------|-------|-------|-------|-------|-------|-------|-------|-------|-------|
| | 3500K | 4000K | 5000K | 3500K | 4000K | 5000K | 3500K | 4000K | 5000K |
| Lumens | 3900 | 3930 | 3960 | 4550 | 4585 | 4620 | 5850 | 5895 | 5940 |
| Efficacy(lm/W) | 130 | 131 | 132 | 130 | 131 | 132 | 130 | 131 | 132 |

| 8FT [*] | 65W [*] | | | 75W [*] | | | 90W [*] | | |
|------------------|------------------|-------|-------|------------------|-------|-------|------------------|-------|-------|
| | 3500K | 4000K | 5000K | 3500K | 4000K | 5000K | 3500K | 4000K | 5000K |
| Lumens | 8450 | 8515 | 8580 | 9750 | 9825 | 9900 | 11700 | 11790 | 11880 |
| Efficacy(lm/W) | 130 | 131 | 132 | 130 | 131 | 132 | 130 | 131 | 132 |

Existing field-adjustable power options*:

- 4FT: 45/38/34, 40/30/25, 35/30/25, 30/25/18
- 8FT: 90/75/65, 65/60/55, 54/46/38

Other power values is available.

**Optional length & outputs available via Special Order. Call 1-800-624-4488.*

| | 15W | | |
|-----------------|-------|-------|-------|
| | 3500K | 4000K | 5000K |
| Lumens | 2040 | 2190 | 2070 |
| Efficacy (lm/W) | 136 | 146 | 138 |

SKU

PLT-90416: 15/20/25W, 35/40/50K, Up to 3250 Lumens, 2'