

## LED Luminaires

### ProLED Lamp Ready Fixture Strip Series

- Pre-wired for 'LineConnect' Type B Double Ended LED T8 Tubes
- LED ready Shunted Sockets
- 2ft and 4ft Form Factors



### Specifications

#### Description

The ProLED Lamp Ready Fixture Strip Series provides a cost effective solution for all general lighting upgrade projects. This fixture is pre-wired for 'LineConnect' Type B Double Ended LED T8 Tubes which allows the end user added flexibility to choose the perfect Halco T8 Linear Lamp to fit their application requirements. The ProLED Lamp Ready Fixture Strip Series is a low cost, low maintenance, easily installed fixture which will give an upgraded look and feel to your space.

#### Construction

- Heavy Duty Steel Housing
- Pre-wired shunted sockets
- White Enamel finish
- 120-277VAC

#### Certifications

- UL Listed
- UL Listed for Damp and Dry Locations

### Ordering Information

Product SKU	Product Code	Product Description
90510	LRS2-2L-T8DE	Lamp Ready Fixture Strip 2ft 2 Lamp T8 Double End Bypass Lamp
90511	LRS4-2L-T8DE	Lamp Ready Fixture Strip 4ft 2 Lamp T8 Double End Bypass Lamp
90515	LRS8-4L-T8DE	Lamp Ready Fixture Strip 8ft 4 Lamp T8 Double End Bypass Lamp
<b>Accessories</b>		
90514	LRS/JB	Lamp Ready Fixture Strip Joiner Bracket

## ProLED Lamp Ready Fixture Strip Series Specifications Table

	LRS2-2L-T8DE	LRS4-2L-T8DE	LRS8-4L-T8DE
Number of Lamps	2	2	4
Voltage	120-277VAC		
Operation	Double Ended		
Housing	Heavy Duty Steel Housing		
Weight	0.85lb	1.41lb	2.90lb
Dimensions	24.2" x 2.79" x 1.8"	48.3" x 2.79" x 1.8"	97.6" x 2.79" x 1.8"
Operating Temperature	-20°C - 40°C		
Listings	UL for Double Ended Lamps		
Environment	UL Damp/Dry Location		
Warranty	5 years Standard		

## Lamp Compatibility

### Halco Compatible T8 Lamps

Product SKU	Product Code	Product Description
<b>Non Color Selectable</b>		
84871	T824FR7/835/BYP4/DSE/LED	T8 7W 24 Inch 3500K Double-Single Ended Bypass Type B
84872	T824FR7/840/BYP4/DSE/LED	T8 7W 24 Inch 4000K Double-Single Ended Bypass Type B
84873	T824FR7/850/BYP4/DSE/LED	T8 7W 24 Inch 5000K Double-Single Ended Bypass Type B
84874	T824FR7/865/BYP4/DSE/LED	T8 7W 24 Inch 6500K Double-Single Ended Bypass Type B
84886*	T848FR12/835/BYP4/DSE/LED	T8 12W 48 Inch 3500K Double-Single Ended Bypass Type B
84889	T848FR12/865/BYP4/DSE/LED	T8 12W 48 Inch 6500K Double-Single Ended Bypass Type B
<b>Color Selectable (2FT &amp; 4 FT)</b>		
87214	24T8-9W-8CS-SDE-BYP-LED	LED T8 Linear Tube 24in 9W 3000K - 6500K 5CCT Selectable Type B Bypass 1150 Lumen Double-Single Ended Dimmable
87216	48T8-14W-8CS-SDE-BYP-LED	LED T8 Linear Tube 48in 14W 3000K - 6500K 5CCT Selectable Type B Bypass 1800 Lumen Double-Single Ended Dimmable
<b>High Efficiency (4FT)</b>		
87200	48T8HE-10-835-DSE-BYP-LED	48 Inch LED T8 High Efficiency 10.5W 3500K Double Single Ended Type B Line Connect LED
87201	48T8HE-10-840-DSE-BYP-LED	48 Inch LED T8 High Efficiency 10.5W 4000K Double Single Ended Type B Line Connect LED
87202	48T8HE-10-850-DSE-BYP-LED	48 Inch LED T8 High Efficiency 10.5W 5000K Double Single Ended Type B Line Connect LED
<b>With Emergency Battery Backup (4FT)</b>		
82373	T8EM-48FR17-40BYP-LED-2PK	17W 2100 Lumen 4FT Emergency T8 400 Lumen Emergency Output 4000K (2 Pack)
82374	T8EM-48FR17-50BYP-LED-2PK	17W 2100 Lumen 4FT Emergency T8 400 Lumen Emergency Output 5000K (2 Pack)
<b>Versa Connect (8FT)</b>		
87210	96T8VC-42-8CS-DE-BYP-LED-CG	VersaConnect LED T8 96in (2 X 48in) 42 Watt Color Selectable 3000K-3500K-4000K-5000K-6500K Type B (Ballast Bypass) with FA8 and R17D End Caps Coated Glass

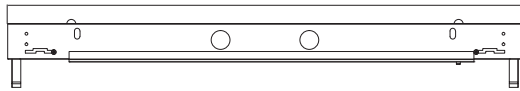
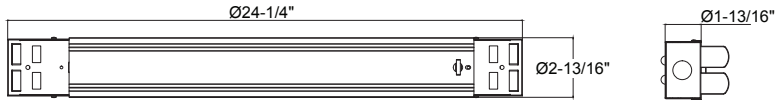
★ While supplies last

LED Luminaires

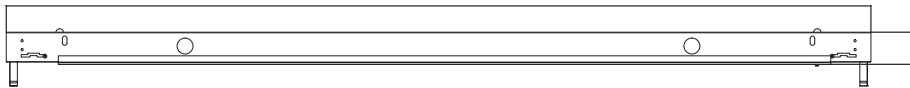
## ProLED Lamp Ready Fixture Strip Series

### Dimensions

2'



4'



8'

