



## LED PARKING LOT FIXTURE

### WARNING, CAUTION, SAFETY AND INSTALLATION INSTRUCTIONS

#### WARNING

- Installation, service, and maintenance of luminaries should be performed by a qualified licensed electrician.
- Please read all instructions before attempting installation.
- Disconnect product and allow to cool prior to servicing.

#### CAUTION

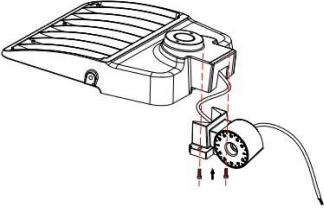
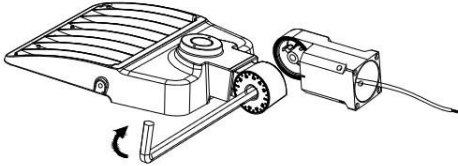
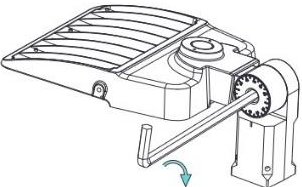
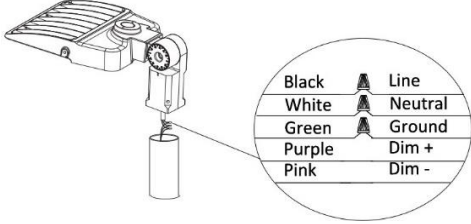
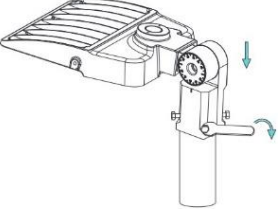
- Any alteration or modification of this product is forbidden as it may cause personal injury, death, property damage, and/or product malfunction.
- Min 75° supply conductors.
- Consult a qualified electrician to ensure correct branch circuit conductor.

#### NOTICE

- This luminaire is designed to operate in ambient temperatures ranging from -40°F to 113°F (-40°C to 45°C).

### Installation Instructions

#### Slip Fitter – suitable for max. pole size of 2 3/8"

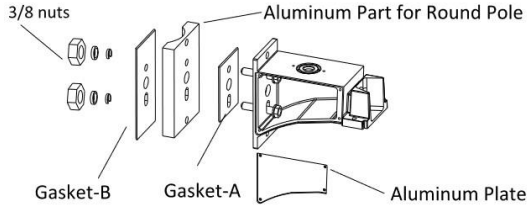
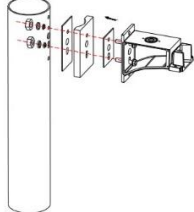
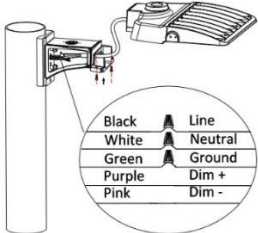
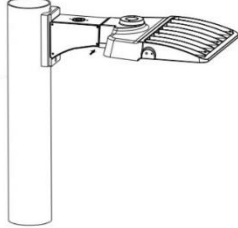
<p>1. Install the slip fitter part A to the fixture.</p> 	<p>2. Attach Part B to Part A and tighten them a bit so that they won't come apart.</p> 
<p>3. Swivel the arm to the desired angle and tighten the screw.</p> 	<p>4. Connect the wires as the below wire diagram shows.</p> 
<p>5. Connect the fixture to the pole, and tighten the screws. Turn on the main power to check if the fixture lights up properly. Installation is done.</p> 	



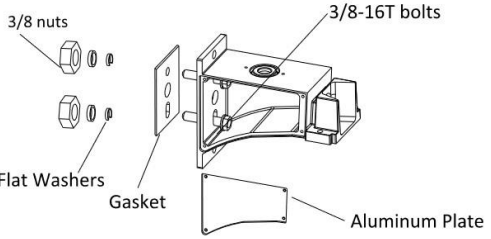
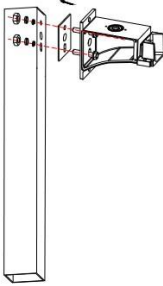
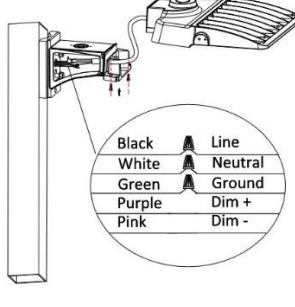
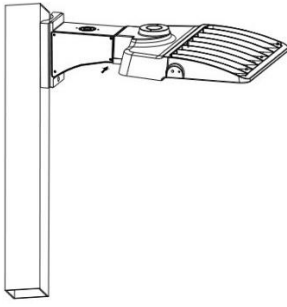
# LED PARKING LOT FIXTURE

## WARNING, CAUTION, SAFETY AND INSTALLATION INSTRUCTIONS

### Round Pole – suitable for 4” to 6” pole

<p><b>Parts</b></p> 	<p>1. Install the arm to the round pole.</p> 
<p>2. Feed the wires through the straight arm and connect to the main power. Then slide-in the fixture to the straight arm.</p> 	<p>3. Put back the aluminum plate and tighten the screws. Turn the main power on to check if the fixture lights up properly. Installation is done.</p> 

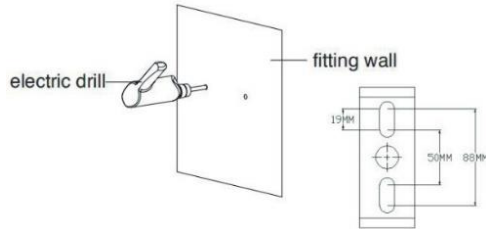
### Straight Pole – suitable for 3”x3” or larger pole

<p><b>Parts</b></p> 	<p>1. Install the arm to the square pole.</p> 
<p>2. Feed the wires through the straight arm and connect to the main power. Then slide-in the fixture to the straight arm.</p> 	<p>3. Put back the aluminum plate and tighten the screws. Turn the main power on to check if the fixture lights up properly. Installation is done.</p> 

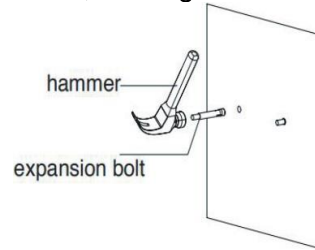


### Trunnion Mount

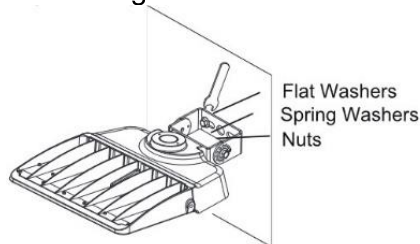
1. Use trunnion bracket to mark drill holes. Drill the mounting holes on the wall with a drill.



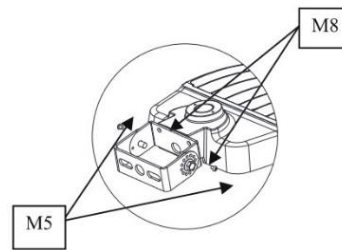
2. Hammer expansion bolts into the mounting holes, making sure the threads exposed.



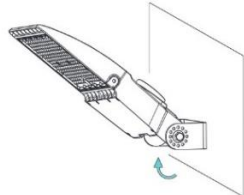
3. Mount area light so that mount is flush to the wall. Attach to the wall by aligning flat washers, spring washers, and nuts through bracket openings and screw into expansion bolts using a wrench.



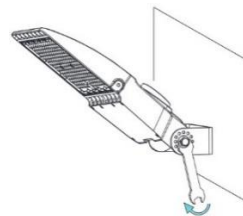
4. Loosen 2x M8 trunnion bolts and 2x M5 position screws. Adjust the trunnion to desired position.



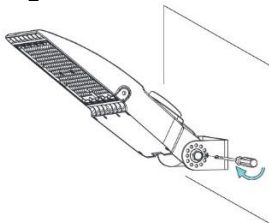
5. Swivel the luminaire until 2x M5 positioning screws are in one of the position holes and tighten the hex nut.



6. Tighten the 2x M8 trunnion bolts using a flat washer.



7. Tighten the 2 M5 bolts with a screw driver. Installation is complete.



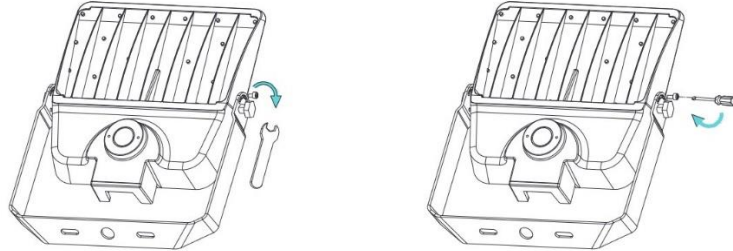


# LED PARKING LOT FIXTURE

## WARNING, CAUTION, SAFETY AND INSTALLATION INSTRUCTIONS

### U-Bracket

1. Loosen the 2x M12 (220W-300W) or 2x M10 (100W-150W) and 2x M5 screws.
2. Adjust the fixture to required angle and tighten the 2x M5 positioning screws on one side.
3. Tighten the 2x M12 (220W-300W) or 2x M10 (100W-150W) and 2x M5 screws on the other side.



### Wiring Diagrams

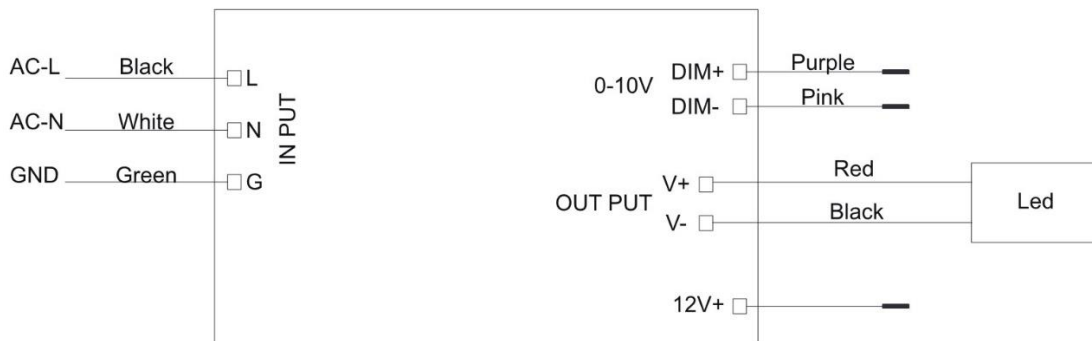
#### 120-277V

#### LED DRIVER



#### 277-480V

#### LED DRIVER





### Drill Patterns

<p><b>Wall Mount or Round Pole</b></p> <ol style="list-style-type: none"> <li>1. Installation: wall mount or round pole</li> <li>2. Pole size: 4", 5", 6"</li> <li>3. Max load weight: 110lbs</li> </ol>	<p><b>Wall Mount or Square Pole</b></p> <ol style="list-style-type: none"> <li>1. Installation: wall mount or square pole</li> <li>2. Pole size: 3x3" or larger</li> <li>3. Max load weight: 110lbs</li> </ol>
--	--

### Mounting Arm Dimensions

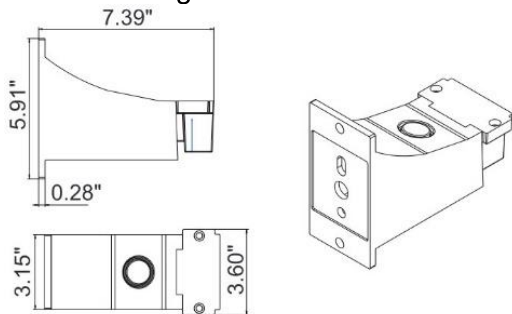
<ol style="list-style-type: none"> <li>1. Installation angle: 0-90°</li> <li>2. Max pole size: 2-3/8"</li> <li>3. Each rotation is 4°</li> <li>4. Max Load weight: 110 lbs</li> </ol>	<ol style="list-style-type: none"> <li>1. Installation: wall mount or round pole</li> <li>2. Pole size: 4", 5", 6"</li> <li>3. Max load weight: 110 lbs</li> </ol>
---	--



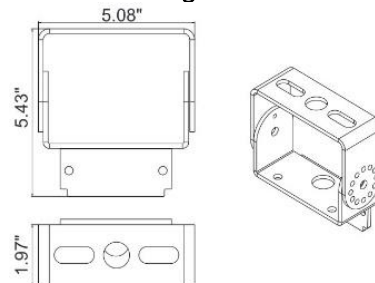
## LED PARKING LOT FIXTURE

### WARNING, CAUTION, SAFETY AND INSTALLATION INSTRUCTIONS

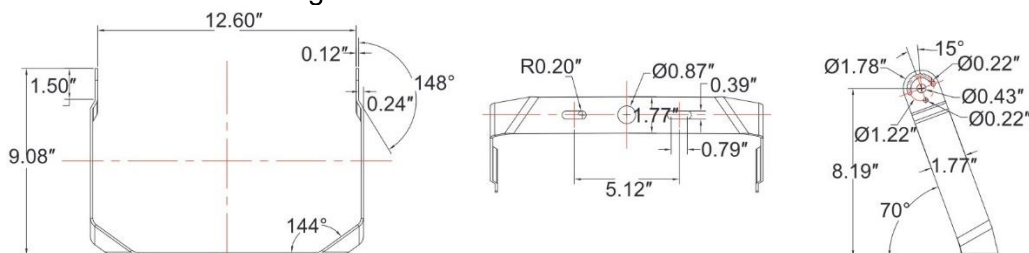
1. Installation: wall mount or square pole
2. Pole size: 3x3" or larger
3. Max load weight: 110 lbs



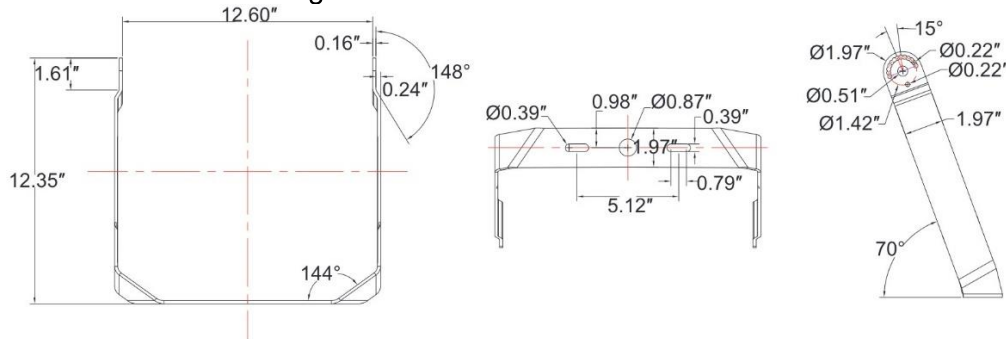
1. Installation angel: 0-180°
2. Max pole size: 2-3/8"
3. Each rotation is 30°
4. Max load weight: 110 lbs



#### For 100W/150W area light



#### For 220W/300W area light



## ⚠ WARNING

- Before installing, servicing, or performing routine maintenance upon this equipment, follow these general precautions.
- To reduce the risk of death, personal injury, or property damage from fire, electric shock, falling parts, cuts/abrasions, and other hazards, read all warnings and instructions included with and on the fixture box and all fixture labels.
- Proper grounding is required to ensure safety.
- Power must be turned off at the breaker before installation or maintenance.
- This product must be installed in accordance with the applicable installation code by a person familiar with the construction and operation of the product and the hazards involved.
- Wear gloves and eye protection at all times while installing, servicing, or performing maintenance on the luminaire, and avoid direct eye exposure to the light source while it is on.



## LED PARKING LOT FIXTURE

### WARNING, CAUTION, SAFETY AND INSTALLATION INSTRUCTIONS

- To prevent wiring damage or abrasion, do not expose wiring to edges of sheet metal or other sharp objects.
- Do not install damaged product. Inspect luminaire for damage that may have occurred during transit. If damaged, contact the manufacturer immediately.
- These instructions do not purport to cover all details or variations in equipment nor to provide every possible contingency to meet in connection with installation, operation, or maintenance. Should further information be desired or should particular problems arise which are not covered sufficiently for the purchaser's or owner's purposes, contact the manufacturer.

### **⚠ ADVERTENCIA**

- Antes de instalar, reparar o realizar el mantenimiento de rutina de este equipo, siga estas precauciones generales.
- Para reducir el riesgo de muerte, lesiones personales o daños a la propiedad por fuego, descarga eléctrica, caída de piezas, cortes / abrasiones y otros peligros, lea todas las advertencias y instrucciones incluidas con y en la caja del dispositivo y todas las etiquetas del dispositivo.
- Se requiere una conexión a tierra adecuada para garantizar la seguridad.
- Se debe apagar la energía en el disyuntor antes de la instalación o el mantenimiento.
- Este producto debe ser instalado de acuerdo con el código de instalación aplicable por una persona familiarizada con la construcción y operación del producto y los peligros involucrados.
- Utilice guantes y protección para los ojos en todo momento durante la instalación, el servicio o el mantenimiento de la luminaria, y evite la exposición directa de los ojos a la fuente de luz mientras está encendida.
- Para evitar daños o abrasiones en el cableado, no exponga el cableado a bordes de láminas de metal u otros objetos afilados.
- No instale un producto dañado. Inspeccione la luminaria en busca de daños que puedan haber ocurrido durante el tránsito. Si está dañado, comuníquese con el fabricante de inmediato.
- Estas instrucciones no pretenden cubrir todos los detalles o variaciones en el equipo ni proporcionar todas las posibles contingencias a cumplir en relación con la instalación, operación o mantenimiento. Si desea obtener más información o si surgen problemas particulares que no están suficientemente cubiertos para los propósitos del comprador o propietario, comuníquese con el fabricante.