

LT8F | UL-B | CW5-Series

Datasheet

Project Details

Project Name:

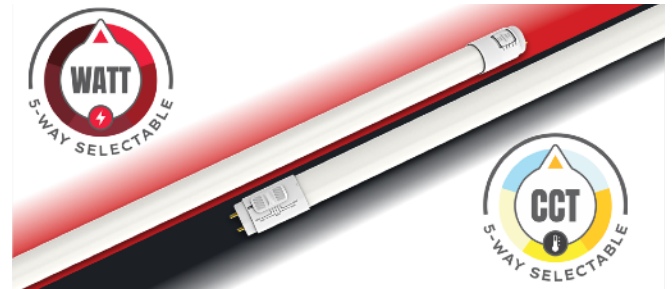
Fixture Schedule:

Project Number:

Notes:

Key Features

- ✓ Color & Wattage Selectable 4FT T8
- ✓ Uniform, end to end light output with zero pixelation
- ✓ Full Length Glass Frosted Lens With 320° Light Distribution
- ✓ Bypass: Double-Ended
- ✓ Suitable for enclosed, dry & damp locations
- ✓ Compatible to Shunted and/or Non-Shunted Lamp Holders
- ✓ All Glass Construction with PET Coating — Meets NSF Standards for Food Safety
- ✓ Universal Input Voltage: 120–277V



Model Specifications

Model	Length (FT)	Lumen (lm)	WATTselect (W)	CCTselect (K)
LT8F4CW5/DE5	4FT	8W:	5-WATTselect: 8W / 10W / 12W / 15W / 18W *	5-CCTselect: 2700K / 3000K / 3500K / 4000K / 5000K *
		2700K-1100lm		
		3000K-1150lm		
		3500K-1200lm		
		4000K-1200lm		
		5000K-1200lm		
		10W:		
		2700K-1300lm		
		3000K-1350lm		
		3500K-1450lm		
		4000K-1450lm		
		5000K-1450lm		
		12W:		
		2700K-1600lm		
		3000K-1650lm		
		3500K-1750lm		
		4000K-1750lm		
		5000K-1750lm		
		15W:		
		2700K-1900lm		
		3000K-1950lm		
		3500K-2050lm		
		4000K-2050lm		
		5000K-2050lm		
18W:				
2700K-2200lm				
3000K-2250lm				
3500K-2350lm				
4000K-2350lm				
5000K-2350lm				

* NOTE: Factory default setting

Electrical Characteristics: UL-B

Rated Voltage	120 - 277V
Power Factor	>0.9

Certifications



Applications



Product Warranty *

7-Year Warranty



50,000 Hrs



* Standard warranty. Extended warranty available.



Ordering Guide

Model Series	Length (ft)	WATTselect (W) + CCTselect (K)	Voltage (V)	Series
LT8F LED UL-B T8 Linear Tube	4 4FT	CW5 5-WATTselect: 8W 10W 12W 15W 18W 5-CCTselect: 2700K 3000K 3500K 4000K 5000K	- DE 120-277V	5 Compliant to DLCv5.1
CATALOG #:				
LT8F	4	CW5	- DE	5

Installation Methods

Installation Methods	Configuration Diagrams
<p>Bypass Double-Ended (UL-B)</p> <p>May be wired as bi-pin powered or single-pin powered as shown in the configuration diagram to the right.</p>	

DLC Model Guide and Performance Specifications

Model Numbers	DLC Product ID	Lamp Type-B (W)	Lumen	Efficacy	CCT	CRI	PF	Input Voltage
LT8F4CW5/DE5	S-Y1LXVG	18W	2,280lm	127lm/W	2700K	≥83	≥0.90	120-277V 50/60Hz