



# LED Tape Light Channel – Mud-In Recessed

## DESCRIPTION

Create custom fixtures for your LED tape light with these mud-in recessed channels and their compatible accessories.

## FEATURES

- Comes with opaque lens
- Channel and lens can be cut to desired length
- Recesses into walls or ceilings; mud-in flange provides a seamless look
- Designed for LED tape light no wider than 15mm/0.59 in
- Requires additional accessories to complete installation; see Accessories section for full list of compatible accessories.

## LISTINGS

- Indoor/dry locations
- RoHS

## CONSTRUCTION

- Aluminum with anodized finish
- Frosted PC lens protects the tape light while diffusing light output

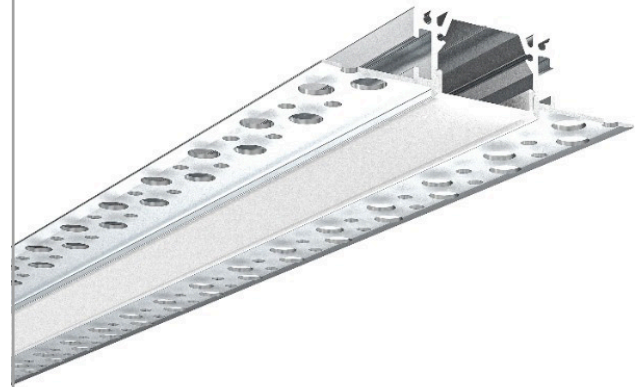
## INSTALLATION

- Mud-in recessed mount into drywall; see Installation Instructions for more information.

## WARRANTY

- 3-year limited warranty; see [pltsolutions.com](http://pltsolutions.com) for warranty details

<b>Project name</b>	<b>Type</b>
<b>Catalog number</b>	
<b>Comments</b>	<b>Voltage</b>
<b>Approved by</b>	<b>Date</b>



## APPLICATIONS

- Walls
- Ceilings

## PERFORMANCE SUMMARY

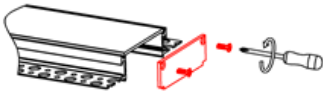
Item #	Mounting	Beam Angle	Tape Light Max. Width	Finish	Length
PLT-12909	Mud-In Recessed	100°	15mm	Anodized	6.6'

## ACCESSORIES

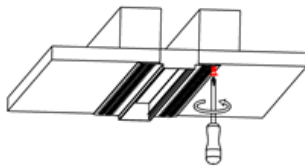
SKU	Description	Compatible With
PLT-12910	End Cap – Grey – 2 Pack	PLT-12902
PLT-12911	Straight Metal Joiner – 2 Pack	PLT-12909, PLT-12917, PLT-12919, PLT-12920, PLT-12924, PLT-12925
PLT-12912	90 Deg. Flat Metal Linking Bracket – 2 Pack	PLT-12909, PLT-12917, PLT-12919, PLT-12920, PLT-12924, PLT-12925
PLT-12913	90 Deg. Vertical Metal Linking Bracket – 2 Pack	PLT-12909, PLT-12917, PLT-12919, PLT-12920, PLT-12924, PLT-12925
PLT-12914	120 Deg. Flat Metal Linking Bracket – 2 Pack	PLT-12909, PLT-12917, PLT-12919, PLT-12920, PLT-12924, PLT-12925
PLT-12914	120 Deg. Vertical Metal Linking Bracket – 2 Pack	PLT-12909, PLT-12917, PLT-12919, PLT-12920, PLT-12924, PLT-12925
PLT-12916	135 Deg. Flat Metal Linking Bracket – 2 Pack	PLT-12909, PLT-12917, PLT-12919, PLT-12920, PLT-12924, PLT-12925

## INSTALLATION

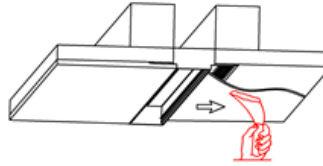
1. Attach the end caps with [screws](#)



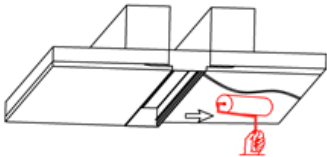
2. Mount the profile on the [ceiling](#)



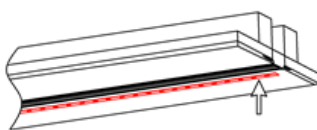
3. Apply plaster to the fixture & [drywall](#)



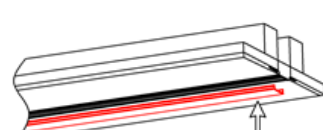
4. Paint the fixture & [drywall](#)



5. Stick the led strips to the [channel](#)



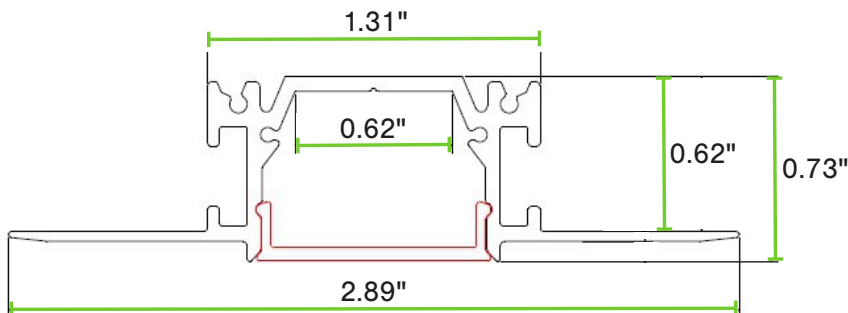
6. Press the diffused cover into [place](#)



7. Installation complete



## DIMENSIONS



### CHANNEL

Height – 0.73"

Width – 1.31"

Width w/ flange – 2.89"

Inner Channel Width – 0.62"

Length – 6.6'

Weight – 2.44 lbs