



ESXF LED Floodlights

36 Floods in One

The Lithonia Lighting® ESXF LED Floodlight is an all-in-one flood that gives ultimate versatility by offering 36 configurations in one product while delivering on superior illumination and offers easy access to controls for color switching, lumen switching and selectable photocell. Available in five sizes, ESXF comes with the two most common mountings already included in the box, making on-the-spot reconfiguring quick and easy. No more go-backs!

Suitable for both professionals and DIYers, these floodlights offer a wide flood distribution (7x7) and DLC Premium performance, making it a one-stop-shop for all floodlighting needs. Applications include but are not limited to:

- Yards, walls, and fences
- Homes, warehouses, and office buildings
- Driveways and sidewalks
- Signage and wayfinding
- Patios and common areas

Every ESXF includes:

- Available in five sizes suitable for replacing up to 1000W HID
- Adjustable lumen output (ALO) with three lumen settings*
- Switchable color temperature (3000K/4000K/5000K)
- MVOLT or UVOLT and XVOLT with ESXF5
- Dusk-to-dawn photocell
- 2 mounting options in each box*
- 5-year limited warranty
- DLC Premium qualified

* ESXF1 P0 comes with 2,500 lumens and knuckle mount; yoke mount sold separately.



ESXF1 P0



ESXF1



ESXF2



ESXF3



ESXF4



ESXF5



Adjustable Lumen Output



Switchable CCT



Dusk-to-Dawn Operation



ESXF LED Floodlight

Choose your options on the fly...

Choose Your Brightness

Every ESXF includes three adjustable lumens settings. If you need more illumination or want to reduce the intensity, the ESXF makes it easy to adjust on location.*

* ESXF1 P0 is 2,500 lumens only



Choose Your Color

Each ESXF includes three switchable color temperatures to give you the illumination requirements specific to the job.

Choose Your Features

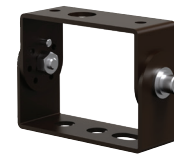
Easy-Access Control Panel

- Selectable dusk-to-dawn photocell
- Switchable CCT
- Adjustable Lumen Output*



Choose Your Mounting

Two Popular Mounting Options in Each Box*



* Budget model ESXF1 P0 includes knuckle mount only, 2,500 lumens only.

ESXF Floodlights					
	Catalog Number	CI Code	UPC	Included Mounts	Features
	ESXF1 P0 SWW2 THK DDB	*276AL6	00196182393051	Knuckle	
	ESXF1 ALO SWW2 KY DDB	*276ALH	00196182393204	Knuckle (pre-installed) Yoke as accessory	
	ESXF2 ALO SWW2 KY DDB	*276ALU	00196182393242		
	ESXF3 ALO SWW2 YS DDB	*276ALW	00196182393266	Yoke & Slipfitter	
	ESXF3 ALO SWW2 UVOLT YS DDB	*276AM0	00196182393273		
	ESXF4 ALO SWW2 YS DDB	*276AM2	00196182393280		
	ESXF4 ALO SWW2 UVOLT YS DDB	*276AM4	00196182393297		
	ESXF5 ALO SWW2 UVOLT YS DDB	*283G2F	00197589243710	Yoke & Slipfitter	
	ESXF5 ALO SWW2 XVOLT YS DDB	*283G2G	00197589243734		
	ESXF5UBV DDB M6	*283G2K	00197589243727		

Visit www.lithonia.com for more information.



Adjustable Lumen Output



Switchable CCT



Dusk-to-Dawn Operation