



Product Specification

Document No.:

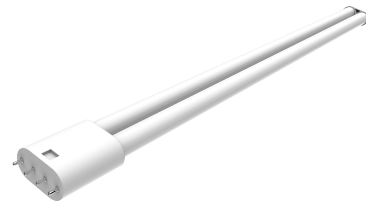
Version: A0

Page: 1/2

model no. **PLT-50363, PLT-50364, PLT-50365, PLT-50366, PLT-50367**

1. DESCRIPTION:

LAMP TYPE:	PLL
LAMP CLASSIFIED:	Type A, Gen2
BASE TYPE:	2G11
EQUIVALENT	FT40W/2G11
WATTAGE:	17W
CCT:	3000K,3500K,4000K,5000K,6500K
DIFFUSER TYPE:	Internal coated glass tube
WARRANTY:	5 YEARS



Suitable for dry and damp locations

Suitable for open fixtures

Horizontal burn position

2. PRODUCT FEATURES

Replacement for conventional fluorescent lamp

UL (Listed)

Full glass housing: no aging, no yellowing, no bending

Environmentally friendly: no mercury

3. PERFORMANCE (If no specified, the test conditions in below items are: Ta=25°C±1°C, RH≤65%, air free.)

3.1 Electrical Characteristics

PARAMETERS	SYMBOL	MIN	RATED	MAX	UNIT	Test Condition
Input voltage	V _{in}	108	120/277	305	V	/
Frequency	f	--	50/60	--	Hz	/
Rated system power	P	-10%	20.0	+10%	W	V _{in} =120,277Vac
Power factor	PF	-3%	0.9	--	/	V _{in} =120,277Vac
Total Harmonic	THD	--	20%	+5%	/	V _{in} =120,277Vac
Starting time	t	--	--	1	s	V _{in} =120,277Vac
Flicker Percent	/	--	--	--	/	/
Dimming Type	/	Compatible with selected dimmable ballasts				

3.2 Photometrical Characteristics

PARAMETERS	SYMBOL	MIN	RATED	MAX	UNIT	Test Condition
Beam Angle	/	--	140	--	°	
Flux @ <4000K	Φ	-10%	2350	--	LM	V _{in} =120,277Vac
Flux @ ≥4000K		-10%	2500	--		
System efficacy@<4000K	η	-10%	138	--	LM/W	
System efficacy@≥4000K		-10%	147	--		

3.3 Color Characteristics (refer to ANSI C78.377-2017)

Chromaticity coordinates

PARAMETER	SYMBOL	MIN	RATED	MAX	Unit	Test Condition
CENTER POINT	CCT=3000K	X=0.4339 Y=0.4033		/		
	CCT=3500K	X=0.4078 Y=0.3930				
	CCT=4000K	X=0.3818 Y=0.3797				
	CCT=5000K	X=0.3446 Y=0.3551				
	CCT=6500K	X=0.3123 Y=0.3283				

PARAMETER	SYMBOL	MIN	RATED	MAX	Unit	Test Condition
Color Render Index	R _a	80	82	--	/	/
R ₉	R ₉	0	12	--		
Color tolerance	/	--	--	5	SDCM	



Product Specification

Document No.:

Version: A0

Page: 2/2

model no. **PLT-50363, PLT-50364, PLT-50365, PLT-50366, PLT-50367**

4. LUMEN MAINTENANCE & LIFE

PARAMETERS	SYMBOL	MIN	RATED	MAX	UNIT	Test Condition
Lumen Maintenance at 6000hrs	/	--	95.8%	--	/	/
Life	t	--	50000	--	Hrs	Ta=45C, air free
Warranty	/	--	5	--	Year	Ta=45C, air free

5. OPERATION TEMPERATURE & STORAGE TEMPERATURE

PARAMETERS	SYMBOL	MIN	RATED	MAX	UNIT	Test Condition
Ambient Temperature	T _A	-20	--	45	°C	/
Storage Temperature	T _{st}	-40	--	85		/

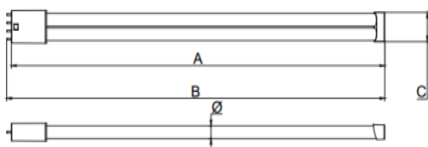
6. COMPATIBILITY

Compatible with mainstream market instant start, program start, and programmed rapid start PLL electronic ballast See Compatible Ballast section for full list.

7. APPROBATION COMPLIANCE

UL1993, FCC part 18 non-consumer, RoHS compliance, NSF

8. DIMENSIONS

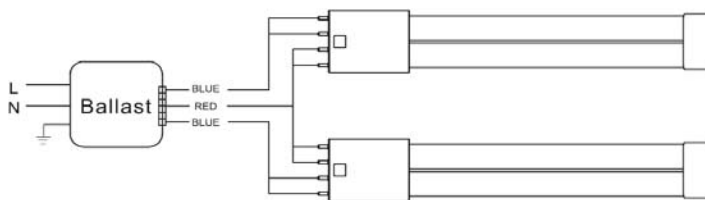


SYMBOL	MIN	TYP	MAX	UNIT
A	556.0	--	564.0	mm
B	563.0	--	571.0	mm
C	37.5	--	39.4	mm
D	17.1	--	17.8	mm

9. Connection & Wiring

WIRING DIAGRAM

WIRING ILLUSTRATION



/

10. SKUs

- PLT-50363 - 17W, 2350 Lumens, 138 LPW, 3000K
- PLT-50364 - 17W, 2350 Lumens, 138 LPW, 3500K
- PLT-50365 - 17W, 2500 Lumens, 147 LPW, 4000K
- PLT-50366 - 17W, 2500 Lumens, 147 LPW, 5000K
- PLT-50367 - 17W, 2500 Lumens, 147 LPW, 6500K

Compatible Ballast List

NC	Incompatible	P	PF <0.85
N	Acoustic noise >20dB	T	THD >30%
S	Can't start-up	C	Compatible
F	Flicker after >2s start-	/	Not tested
HT	High temperature	NA	Not applicable

No	Ballast No.	Ballast Brand	Part Number	Start Method	# of Lamps	Lamp Connection	N-1 Lamp		N Lamp	
							120Vac	277Vac	120Vac	277Vac
1	PL-10	OSRAM SYLVANIA	QTP 2×26/32/42CFUNV DM PEM	PS	2	Series	C	F	C	C
2	PL-12	HATCH	HC226PS/UV/D	PS	2	Series	C	C	C	C
3	PL-19	HOWARD INDUSTRIES	EP2/42CF/MV/2	PS	2	Series	C	C	C	C
4	PL-30	ProLume	EP2CF42PS/MV/DC/K	PS	2	Series	HT	HT	C	C
5	PL-37	General Electric	GEC226-MVPS-3W	PS	2	Series	C	C	C	C
6	PL-39	Philips-Advance	ICF-2S42-M2-LD	PS	2	Series	C	C	C	C
7	PL-43	HATCH	HC242PS/UV/D	PS	2	Series	HT	HT	C	C
8	PL-44	AC ELECTRONICS	CSS-UV42PS	PS	2	Series	C	C	C	C
9	PL-45	AC ELECTRONICS	CSD-UV42PS	PS	2	Series	C	C	C	C
10	PL-48	KEYSTONE	KTEB-242-UV-RS-DW	RS	2	Series	HT	HT	HT	HT
11	PL-49	KEYSTONE	KTEB-242-UV-PS-DW	PS	2	Series	C	C	C	C
12	PL-55	OSRAM SYLVANIA	QTP 2×26CF/UNV DM	PS	2	Series	C	C	C	C
13	PL-56	OSRAM SYLVANIA	QTP 2×26/32/42CFUNV DM	PS	2	Series	C	F	C	C
14	PL-60	KEYSTONE	KTEB-142T-1-TP-SC /HB	PS	1	NA	NA	NA	HT	NA
15	PL-68	Universal Lighting Technol	C242UNVMES	PS	2	Series	C	C	C	C
16	PL-75	Fulham	RHA-UNV-242-C	PS	2	Series	S	S	C	C
17	PLL-201	General Electric	GEC240MAX-A	IS	2	Parallel	C	C	C	C
18	PLL-202	OSRAM	QHE 2x40DL/UNV ISN-SC	IS	2	Parallel	C	C	C	C
19	PLL-203	General Electric	GEC140MAX-A	IS	1	n, a	NA	NA	C	C
20	PLL-205	Philips-Advance	ICN-1TTP40-SC	IS	1	n, a	NA	NA	C	C
21	PLL-206	General Electric	GEC340MAX-A	IS	3	Parallel	C	F	C	C
22	PLL-208	OSRAM	QHE 1x40DL/UNV ISN-SC	IS	1	NA	NA	NA	C	C
23	PLL-209	OSRAM	QHE 3x40DL/UNV ISN-SC	IS	3	Parallel	C	C	C	C
24	PLL-210	OSRAM SYLVANIA	QT 2×40/120 DL	IS	2	Parallel	C	NA	C	NA
25	PLL-211	Philips-Advance	RCN-2TTP40-SC	IS	2	Parallel	C	NA	C	NA
26	PLL-301	Universal Lighting Technol	C240PUNVHP-B	PRS	2	Series	C	C	C	C
27	PLL-303	General Electric	GEC240MVPS-A	PRS	2	Series	C	C	C	C