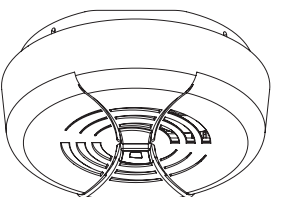


# USER'S MANUAL BATTERY POWERED CARBON MONOXIDE ALARM



**IMPORTANT! PLEASE READ CAREFULLY AND SAVE.**

This user's manual contains important information about your Carbon Monoxide Alarm's operation. If you are installing this CO Alarm for use by others, you must leave this manual—or a copy of it—with the end user.



Printed in Mexico M08-152713-CO250-US K1 8/16

**CONFORMS TO**  
UL STD 2034

Model CO250

© 2016 BRK Brands, Inc. All rights reserved. Distributed by BRK Brands, Inc. - BRK Brands, Inc. is a subsidiary of Newell Brands Inc. (NYSE:NB). First Alert® is registered trademark of The First Alert Trust - 3901 Liberty Street Road, Aurora, IL 60504-8122 - Consumer Affairs: (800) 323-9005 - www.firstalert.com - www.brkelectronics.com

## INTRODUCTION BASIC SAFETY INFORMATION IMPORTANT!

- **Dangers, Warnings, and Cautions alert you to important operating instructions or to potentially hazardous situations. Pay special attention to these items.**
- **THIS IS NOT A SMOKE ALARM! This CO Alarm is designed to detect carbon monoxide from ANY source of combustion. It is NOT designed to detect smoke, fire, or any other gas.**
- **This CO Alarm is approved for use in single-family residences. It is NOT designed for marine use.**

## CAUTION!

- **This CO Alarm will only indicate the presence of carbon monoxide gas at the sensor. Carbon monoxide gas may be present in other areas.**
- **WARNING!**
  - The Silence Feature is for your convenience only and will not correct a CO problem. Always check your home for a potential problem after any alarm. Failure to do so can result in injury or death.
  - NEVER ignore your Carbon Monoxide Alarm if it alarms. Refer to "If Your CO Alarm Sounds" for more information. Failure to do so can result in injury or death.

- **Test the CO Alarm once a week. If the CO Alarm ever fails to test correctly, have it replaced immediately! If the CO Alarm is not working properly, it cannot alert you to a problem.**
- **This product is intended for use in ordinary indoor locations of family living units. It is not designed to measure CO levels in compliance with Occupational Safety and Health Administration (OSHA) commercial or industrial standards. Individuals with medical conditions that may make them more sensitive to carbon monoxide may consider using warning devices which provide audible and visual signals for carbon monoxide concentrations under 30 ppm. For additional information on carbon monoxide and your medical condition contact your physician.**

## FCC COMPLIANCE

This equipment has been tested and found to comply with the limits for a Class B digital device, pursuant to Part 15 of the FCC rules. These limits are designed to provide reasonable protection against harmful interference in a residential installation. This equipment generates, uses and can radiate radio frequency energy and, if not installed and used in accordance with the instructions, may cause harmful interference to radio communications.

However, there is no guarantee that the interference will not occur in a particular installation. If this equipment does cause harmful interference to radio or television reception, which can be determined by turning the equipment off and on, the user is encouraged to try to correct the interference by one or more of the following measures:

- Reorient or relocate the receiving antenna.
- Increase the separation between the equipment and receiver.
- Connect the equipment into an outlet on a circuit different from that of the receiver.
- Consult the dealer or an experienced radio or TV technician for help.

**WARNING!**

Changes or modifications to the product, not expressly approved by First Alert / BRK Brands, Inc., could void the user's authority to operate the equipment.

This device complies with Part 15 of the FCC Rules. Operation is subject to the following two conditions: (1) this device may not cause harmful interference, and (2) this device must accept any interference received, including interference that may cause undesired operation.

## HOW YOUR CO ALARM WORKS

**GENERAL INFORMATION**

**WARNING!**

- **This CO Alarm does not operate without working batteries. Removing the batteries, or failure to replace them at the end of their service life, removes your protection.**

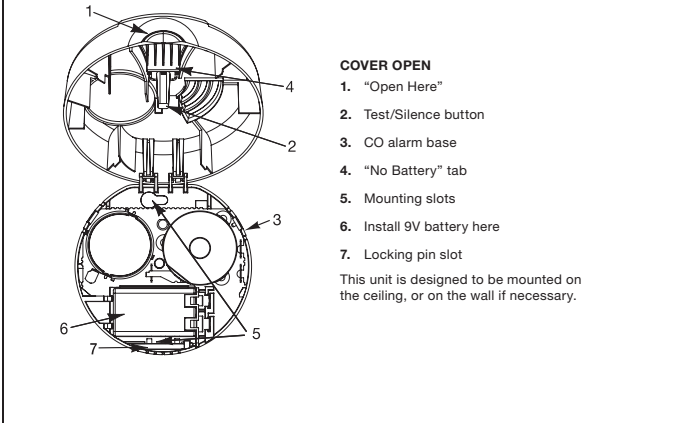
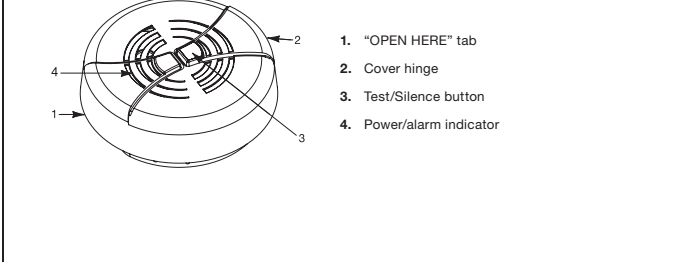
A CO Alarm measures the CO levels in the air. It will alarm if CO levels rise quickly (if the heat exchanger on your furnace burns, for example), or if CO is consistently present (a slow CO leak on a fuel-burning appliance).

This Carbon Monoxide Alarm features a permanently installed sensor and an 85 dB alarm horn. It also has a silence feature to temporarily quiet the alarm horn.

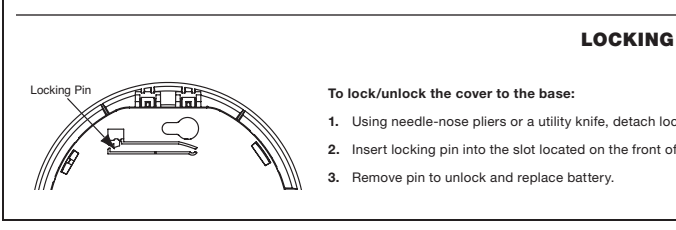
UNDERSTANDING YOUR CO ALARM	
<b>WELCOME CHIRP</b>	Horn chirps and light blinks once when batteries are first connected.
<b>ALARM RECEIVING BATTERY POWER</b>	Light flashes every minute. Horn is silent.
<b>LOW BATTERY WARNING</b>	The light continues to flash (RED) and the horn also "chirps" once every minute. This warning should last for up to 7 days, but you should replace the batteries as soon as possible.
<b>DURING TESTING</b>	Light flashes Red with the horn pattern (4 beeps, pause, 4 beeps), simulating a CO Alarm condition.
<b>CO ALARM</b>	Sensor has detected enough CO to trigger an alarm. Light flashes rapidly and horn sounds loudly (repeating 4 beeps, pause). See "If Your CO Alarm Sounds" for details. <b>During an alarm, move everyone to a source of fresh air. DO NOT move the CO Alarm!</b>
<b>CO ALARM REQUIRES SERVICE (MALFUNCTION SIGNAL)</b>	The light flashes (RED) and the horn sounds 3 "chirps" every minute. CO Alarm needs to be replaced.
<b>CO ALARM HAS REACHED ITS END OF LIFE</b>	The light flashes (RED) and the horn sounds 5 "chirps" every minute. CO Alarm needs to be replaced.

## HOW TO INSTALL THIS CO ALARM

### THE PARTS OF THIS ALARM



**TOOLS YOU WILL NEED:** Pencil, Drill with 3/16" (5 mm) drill bit, Hammer, Standard flathead screwdriver



**COVER OPEN**

1. "Open Here"
2. Test/Silence button
3. CO alarm base
4. "No Battery" tab
5. Mounting slots
6. Install 9V battery here
7. Locking pin slot

This unit is designed to be mounted on the ceiling, or on the wall if necessary.

**INSTALLATION**

**Read "Where to Install CO Alarms" before starting.**

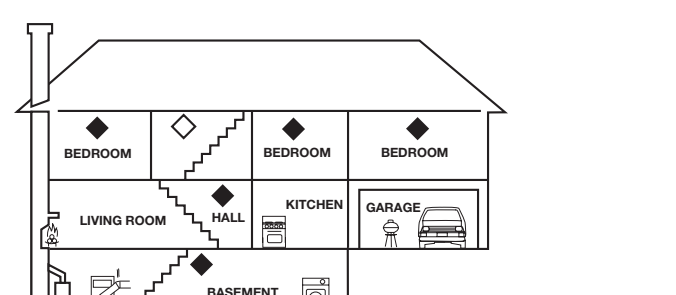
Before you start installation, find the pair of self-adhesive labels included with this CO Alarm. On each label write in the phone number of your emergency responder (the 911) and a qualified appliance technician. Place one label near the CO Alarm, and the other label in the "fresh air" location you plan to go if the alarm sounds.

**WHERE TO INSTALL CO ALARMS**

The National Fire Protection Association (NFPA) recommends that a CO Alarm should be centrally located outside of each separate sleeping area in the immediate vicinity of the bedrooms. For added protection, install additional CO Alarms in each separate bedroom, and on every level of your home.

If your bedroom hallway is longer than 40 feet (12 meters), install a CO Alarm at BOTH ends of the hallway.

This alarm can be installed on the wall or ceiling. If the alarm is to be wall mounted it is recommended that the unit be mounted with hinge down so the words "Carbon Monoxide Alarm" is readable.



**IN A SINGLE-LEVEL HOME:**

- Install at least one CO Alarm near or within each separate sleeping area.
- For added protection, install an additional CO Alarm at least 20 feet (6 meters) away from the furnace or fuel burning heat source.

**IN A MULTI-LEVEL HOME:**

- Install at least one CO Alarm near or within each separate sleeping area.
- For added protection, install at least one CO Alarm on each level of the home.
- For added protection, install an additional CO Alarm at least 20 feet (6 meters) away from the furnace or fuel burning heat source.

**IN MOBILE HOMES:**

- Install CO Alarms on inside walls ONLY. Uninsulated outside walls and roofs of mobile homes often transfer heat and cold from outdoors. The Alarm should be located at least 152 mm (6 inches) from all exterior walls and at least 305 mm (12 inches) from supply or return vents.

**WHERE CO ALARMS SHOULD NOT BE INSTALLED**

**DO NOT LOCATE THIS CO ALARM:**

- In garages, kitchens, furnace rooms, or in any extremely dusty, dirty or greasy areas.
- Within 5 feet (1.5 meters) of any cooking appliance.
- In extremely humid areas. This alarm should be at least 10 feet (3 meters) from a bath or shower, sauna, humidifier, vaporizer, dishwasher, laundry room, utility room or other source of high humidity.
- In areas where temperature is colder than 40°F (4°C) or hotter than 100°F (37.8°C). These areas include unconditioned crawl spaces, unfinished attics, uninsulated or poorly insulated ceilings, porches, and garages.
- In turbulent air, like near ceiling fans, heat vents, air conditioners, fresh air returns, or open windows. Blowing air may prevent CO from reaching the sensors.
- Outside the Mobile Home.
- In direct sunlight.

**WARNING!**

- **This CO Alarm is designed for use inside a single-family home or apartment. It is not meant to be used in common lobbies, hallways, or basements of multi-family buildings unless working CO Alarms are also installed in each family living unit. CO Alarms in common areas may not be heard from inside individual family living units.**
- **This CO Alarm alone is not a suitable substitute for complete detection systems in places which house many people, like hotels or dormitories, unless a CO Alarm is also placed in each unit.**
- **DO NOT use this CO Alarm in warehouses, industrial or commercial buildings, special-purpose non-residential buildings, or airplanes. This CO Alarm is specifically designed for residential use, and may not provide adequate protection in non-residential applications.**

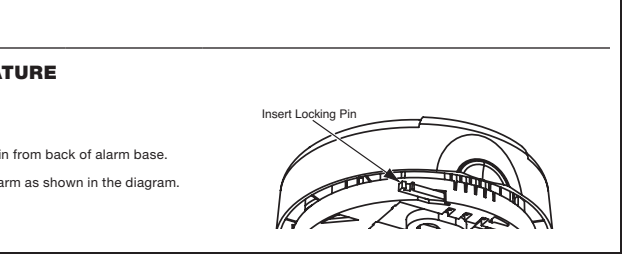
## HOW TO INSTALL THIS CO ALARM

### FOLLOW THESE SIMPLE STEPS!

1. Hold base firmly and pull up on cover tab marked "OPEN HERE." This will open the hinged cover. The cover may unsnap from the base if it's opened too far. This will not damage the unit—the cover hinge snaps back into place easily.
2. Hold the CO Alarm base against the ceiling (or wall) and make a mark at the center of each of the mounting slots with a pencil.
3. Put the unit where it won't get covered with dust when you drill the mounting holes.
4. Using a 3/16" (5 mm) drill bit, drill a hole through each pencil mark.
5. Insert the plastic screw anchors (in the plastic bag with screws) into the holes. Tap the screw anchors gently with a hammer, if necessary, until they are flush with the ceiling or wall.
6. Tighten the screws (provided) into the screw anchors, then loosen them two turns.
8. If the CO Alarm cover does not line up the way you want it, rotate the base and re-tighten the screws.
9. **Activate the battery.** With the cover open, remove and reinstall the battery so the terminals on the battery match the terminals on the CO Alarm. Match "+" to "+" and "-" to "-". Push the battery into until it snaps in securely and cannot be shaken loose. If the battery is not snapped in completely, the unit cannot receive battery power. The CO Alarm may beep briefly when you install the battery—this is normal.
- Once the battery is installed, the red power indicator light (behind the test button) will flash once a minute to show you the CO Alarm is working.
10. Close the cover all the way.
11. Test the CO Alarm. See "Weekly Testing."

**LOCKING FEATURE**

1. Using needle-nose pliers or a utility knife, detach locking pin from back of alarm base.
2. Insert locking pin into the slot located on the front of the alarm as shown in the diagram.
3. Remove pin to unlock and replace battery.



**IF YOUR CO ALARM SOUNDS**

**WARNING!**

Activation of your CO Alarm indicates the presence of carbon monoxide (CO) which can kill you. In other words, when your CO Alarm sounds, you must not ignore it!

**IF THE ALARM SIGNAL SOUNDS:**

1. Operate the Test/Silence button.
2. Call your emergency services, fire department or 911. Write down the number of your local emergency service here:
3. Immediately move to fresh air—outdoors or by an open door or window. Do a head count to check that all persons are accounted for. Do not re-enter the premises, or move away from the open door or window until the emergency services responder has arrived, the premises have been aired out, and your CO Alarm remains in its normal condition.
4. After following steps 1-3, if your CO Alarm reactivates within a 24-hour period, repeat steps 1-3 and call a qualified appliance technician to investigate for sources of CO from fuel-burning equipment and appliances, and inspect for proper operation of this equipment. If problems are identified during this inspection have the equipment serviced immediately. Note any combustion equipment not inspected by the technician, and consult the manufacturers' instructions, or contact the manufacturers directly, for more information about CO safety and this equipment. Make sure that motor vehicles are not, and have not, been operating in an attached garage or adjacent to the residence. Write down the number of a qualified appliance technician here:

**"ALARM-MOVE TO FRESH AIR"**

If you hear the alarm horn and the Red light is flashing, move everyone to a source of fresh air. DO NOT reconnect the battery from the CO Alarm!

**WARNING!**

Alarms have various limitations. See "General Limitations of CO Alarms" for details.

**USING THE SILENCE FEATURE**

**WARNING!**

- The Silence Feature is for your convenience only and will not correct a CO problem. Always check your home for a potential problem after any alarm. Failure to do so can result in injury or death.
- NEVER remove the batteries from your CO Alarm to silence the horn. Use the silence feature. Removing the batteries removes your protection! See "If Your CO Alarm Sounds" for details on responding to an alarm.

The Silence Feature is intended to temporarily silence your CO Alarm's alarm horn while you correct the problem—it will not correct a CO problem. While the alarm is silenced it will continue to monitor the air for CO.

When CO reaches alarm levels the alarm will sound— repeating horn pattern: 4 beeps, a pause, 4 beeps, etc. Press and hold the Test/Silence button until the horn is silent. The initial Silence cycle will last approximately 4 minutes.

**NOTE:** After initial 4-minute Silence cycle, the CO Alarm re-evaluates present CO levels and responds accordingly. If CO levels remain potentially dangerous—or start rising higher—the horn will start sounding again.

WHILE THE DETECTOR IS SILENCED:	
<b>If the CO Alarm...</b>	<b>This means...</b>
Is silent for only 4 minutes, then starts sounding loudly—4 beeps, pause, 4 beeps, pause	CO levels are still potentially dangerous.
<b>If the CO Alarm...</b>	<b>This means...</b>
Remains silent after you pressed the Test/Silence button	CO levels are dropping.

**SILENCING THE LOW BATTERY WARNING**

This silence feature can temporarily quiet the low battery warning "chirp" for up to 8 hours. You can silence the low battery warning "chirp" by pressing the Test/Silence button. The horn will chirp, acknowledging that the low battery silence feature has been activated.

After 8 hours, the low battery "chirp" will resume. **Replace the battery as soon as possible; this unit will not operate without battery power!**

To deactivate this feature: Press the Test/Silence button again. The unit will go into Test Mode and the low battery warning will resume (LED flashes and unit sounds "chirp" once a minute.)

If you cannot silence the low battery warning, replace the battery immediately.

## SILENCING THE END OF LIFE SIGNAL

This silence feature can temporarily quiet the End of Life warning "chirp" for up to 2 days. You can silence the End of Life warning "chirp" by pressing the Test/Silence button. The horn will chirp, acknowledging that the End of Life silence feature has been activated.

After approximately 2 days, the End of Life "chirp" will resume.

## TESTING & MAINTENANCE WEEKLY TESTING

**WARNING!**

- **Test the CO Alarm once a week. If the CO Alarm ever fails to test correctly, have it replaced immediately! If the CO Alarm is not working properly, it cannot alert you to a problem.**
- **DO NOT stand close to the Alarm when the horn is sounding. Exposure at close range may be harmful to your hearing. When testing, step away when horn starts sounding.**

Push and hold the Test/Silence button on the cover until the LED flashes. The alarm horn will sound 4 beeps, a pause, then 4 beeps. The ALARM (RED) light will flash.

The alarm sequence should last 5-6 seconds. If it does not alarm, make sure fresh batteries are correctly installed, and test it again. If the unit still does not alarm, replace it immediately.

**IF THE ALARM DOES NOT TEST PROPERLY:**

1. Make sure the battery is installed correctly.
2. Be sure the Alarm is clean and dust-free.
3. Install a fresh 9V battery\* and test the Alarm again.

**WARNING!**

- **DO NOT try using the Alarm yourself— this will void your warranty! If the CO Alarm is still not operating properly, and it is still under warranty, please see "How to Obtain Warranty Service" in the Limited Warranty. Install a new CO Alarm immediately.**
- **The Test/Silence button is the only proper way to test the CO Alarm. NEVER use vehicle exhaust! Exhaust may cause permanent damage and voids your warranty.**

\*For a list of acceptable replacement batteries, see "Regular Maintenance."

**REGULAR MAINTENANCE**

**TO KEEP THE CO ALARM IN GOOD WORKING ORDER:**

- Test it every week using the Test/Silence button.
- Vacuum the CO Alarm cover once a month, using the soft brush attachment. Never use water, cleaners, or solvents to clean these items damage the unit. Test the CO Alarm again after vacuuming.
- Replace the battery when the CO Alarm "chirps" about every minute (the low battery warning).

The low battery warning should last for 7 days, but you should replace the battery immediately to continue your protection.

**CHOOSING A REPLACEMENT BATTERY:**

This CO Alarm requires one 9V alkaline battery. The following batteries are acceptable as replacements: Alkaline Batteries — Duracell MN1604 or Energizer S22; Lithium Batteries — Ultralife U9V-L, U9V-L-J-P.

These replacement batteries are commonly available at local retail stores.

**WARNING!**

- Always use the exact batteries specified by this User's Manual. DO NOT use rechargeable batteries. Clean the battery contacts and also those of the device prior to battery installation. Install batteries correctly with regard to polarity (+ and -).
- Please dispose of or recycle used batteries properly, following any local regulations. Consult your local waste management authority or recycling organization to find an electronic recycling facility in your area. **DO NOT DISPOSE OF BATTERIES IN FIRE. BATTERIES MAY EXPLODE OR LEAK.**

**WARNING!**

- Keep battery out of reach of children. In the event a battery is swallowed, immediately contact your poison control center, your physician, or the National Battery Ingestion hotline at 202-625-3333 as serious injury may occur.

**CAUTION!**

DO NOT spray cleaning chemicals or insect sprays directly on or near the CO Alarm. DO NOT point over the CO Alarm. Doing so may cause permanent damage.

**IMPORTANT!**

Household cleaners, aerosol chemicals, and other contaminants can affect the sensor. When using any of these materials near the CO Alarm, make sure the room is well ventilated.

**WHAT YOU NEED TO KNOW ABOUT CO**

**WHAT IS CO?**

CO is an invisible, odorless, tasteless gas produced when fossil fuels do not burn completely, or are exposed to heat (wood, coal, charcoal, etc.). Electrical appliances typically do not produce CO.

**These fuels include:** Usual, fuel, oil, natural gas, gasoline, kerosene, and propane.

Common appliances are often sources of CO. If they are not properly maintained, are improperly ventilated, or malfunction, CO levels can rise quickly. CO is a real danger now that homes are more energy efficient. "Air-tight" homes with added insulation, sealed windows, and other weatherproofing can "trap" CO inside.

**SYMPTOMS OF CO POISONING**

These symptoms are related to CO POISONING and should be discussed with ALL household members.

**Mild Exposure:** Slight headache, nausea, vomiting, fatigue ("flu-like" symptoms).

**Medium Exposure:** Throbbing headache, drowsiness, confusion, fast heart rate.

**Extreme Exposure:** Convulsions, unconsciousness, heart and lung failure. Exposure to carbon monoxide can cause brain damage, death.

**WARNING!**

Some individuals are more sensitive to CO than others, including people with cardiac or respiratory problems, infants, unborn babies, pregnant mothers, or elderly people can be more quickly and severely affected by CO. Members of sensitive populations should consult their doctors for advice on taking additional precautions.

**FINDING THE SOURCE OF CO AFTER AN ALARM**

Carbon monoxide is an odorless, invisible gas, which often makes it difficult to locate the source of CO after an alarm. These are a few of the factors that can make it difficult to locate sources of CO:

- House well ventilated before the investigator arrives.
- Problem caused by "backdrafting."
- Transient CO problem caused by special circumstances.

Because CO may dissipate by the time an investigator arrives, it may be difficult to locate the source of CO. BRK Brands, Inc. shall not be obligated to pay for any carbon monoxide investigation or service call.

**HOW CAN I PROTECT MY FAMILY?**

A CO Alarm is an excellent means of protection. It monitors the air and sounds a loud alarm before carbon monoxide levels become threatening for average, healthy adults.

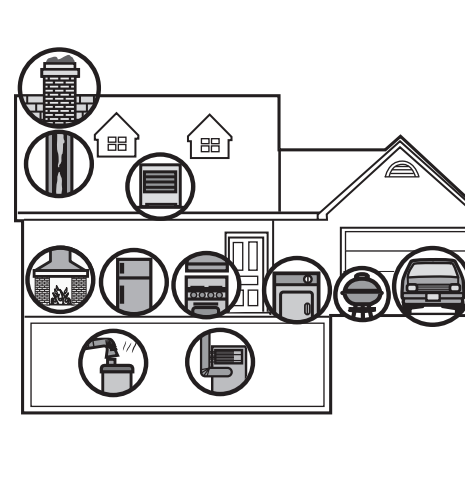
**A CO Alarm is NOT a substitute for proper maintenance of home appliances.**

To help prevent CO problems and reduce the risk of CO poisoning:

- Clean chimneys and flues yearly. Keep them free of debris, leaves, and nests for proper air flow. Also, have a professional check for rust and corrosion, cracks, or separations. These conditions can prevent proper air movement and cause backdrafting. Never "cap" or cover a chimney in any way that would block air flow.
- Test and maintain all fuel-burning equipment annually. Many local gas or oil companies and HVAC companies offer appliance inspections for a nominal fee.
- Make regular visual inspections of all fuel-burning appliances. Check appliances for excessive rust and scaling. Also check the flame on the burner and pilot lights. The flame should be blue. A yellow flame means fuel is not being burned completely and CO may be present. Keep the blower door on the furnace closed. Use vents or fans when they are available on all fuel-burning appliances. Make sure appliances are vented to the outside. Do not put barbecue indoors, or in garages or on screen porches.
- Check for exhaust backflow from CO sources. Check the draft hood on an operating furnace for a backdraft. Look for cracks on furnace heat exchangers.
- Check the house or garage on the other side of shared wall.
- Keep windows and doors open slightly. If you suspect that CO is escaping into your home, open a window or a door. Opening windows and doors can significantly decrease CO levels.

**In addition, familiarize yourself with all enclosed materials. Read this manual in its entirety, and make sure you understand what to do if your CO Alarm sounds.**

## POTENTIAL SOURCES OF CO IN THE HOME



**REGULATORY INFORMATION FOR CO ALARMS**

**WHAT LEVELS OF CO CAUSE AN ALARM?**

Underwriters Laboratories Inc. Standard UL2034 requires residential CO Alarms to sound when exposed to levels of CO and exposure times as described below. They are measured in parts per million (ppm) of CO over time (in minutes).

**UL2034 Required Alarm Points:**

- If the alarm is exposed to 400 ppm of CO, IT MUST ALARM BETWEEN 4 and 15 MINUTES.
- If the alarm is exposed to 150 ppm of CO, IT MUST ALARM BETWEEN 10 and 50 MINUTES.
- If the alarm is exposed to 70 ppm of CO, IT MUST ALARM BETWEEN 60 and 240 MINUTES.

\* Approximately 10% COHb exposure at levels of 10% to 95% Relative Humidity (RH).

The unit is designed not to alarm when exposed to a constant level of 30 ppm for 30 days.

**IMPORTANT!**

CO Alarms are designed to alarm before there is an immediate life threat. Since you cannot see or smell CO, never assume it's not present.

- An exposure to 100 ppm of CO for 20 minutes may not affect average, healthy adults, but after 4 hours the same level can cause headaches.
- An exposure to 400 ppm of CO can cause headaches in average, healthy adults after 35 minutes, but may cause death after 2 hours.

**IMPORTANT!**

This CO Alarm measures exposure to CO over time. It alarms if CO levels are extremely high in a short period of time, or if CO levels reach a certain minimum over a long period of time. The

**GENERAL LIMITATIONS OF CO ALARMS**

This CO Alarm is intended for residential use. It is not intended for use in industrial applications where Occupational Safety and Health Administration (OSHA) requirements for carbon monoxide detectors must be met.

CO Alarms may not be heard. The alarm horn loudness meets or exceeds current UL standards of 85 dB at 10 feet (3 meters). However, if the CO Alarm is installed outside the bedroom, it may not wake up a sound sleeper or one who has recently used drugs or has been drinking alcoholic beverages. This is especially true if the door is closed or only partly open. Even persons who are awake may not hear the alarm horn if the sound is blocked by distance or closed doors. Noise from traffic, stereo, radio, television, air conditioner, or other appliances may also prevent alert persons from hearing the alarm horn. This CO Alarm is not intended for people who are hearing impaired.

CO Alarms will not work without power. This alarm requires the 9V alkaline battery to operate.

CO Alarms for Solar or Wind Energy users and battery backup power systems: AC powered CO Alarms should only be operated with true or pure sine wave inverters. Operating this Alarm with most battery-powered UPS (uninterruptible power supply) products or square wave or "quasi sine wave" inverters will damage the Alarm. If you are not sure about your inverter or UPS type, please consult with the manufacturer to verify.

This CO Alarm will not sense carbon monoxide that does not reach the sensor. This CO Alarm will only sense CO at the sensor. CO may be present in other areas. Doors or other obstructions may affect the rate at which CO reaches the CO Alarm. For this reason, if bedroom doors are usually closed at night, we recommend you install a CO Alarm in each bedroom and in the hallway between them.

CO Alarms may not sense CO on another level of the home. For example, a CO Alarm on the second level, near the bedrooms, may not sense CO in the basement. For this reason, one CO Alarm may not give adequate warning. Complete coverage is recommended. Place CO Alarms on each level of the home.

CO Alarms are not fireproof. Like all other electronic devices, CO Alarms have limitations. They can only detect CO that reaches their sensors. They may not give early warning to rising CO levels if the CO is coming from a remote part of the home, away from the CO Alarm.

TROUBLESHOOTING GUIDE		
PROBLEM...	IT MEANS...	YOU SHOULD...
The light continues to flash (RED) and the horn "chirps" once every minute.	Low battery warning.	Install a new 9V alkaline battery*.
The light flashes (RED) and the horn sounds 3 "chirps" every minute.	<b>MALFUNCTION SIGNAL.</b> CO Alarm needs to be replaced.	CO Alarms under warranty should be returned to manufacturer for replacement. See "Limited Warranty" for details.
The light flashes (RED) and the horn sounds 5 "chirps" every minute.	<b>END OF LIFE SIGNAL.</b> CO Alarm needs to be replaced.	Immediately replace the CO Alarm.
CO Alarm goes back into alarm 4 minutes after you press the Test/Silence button.	CO levels indicate a potentially dangerous situation.	<b>IF YOU ARE FEELING SYMPTOMS OF CO POISONING, EVACUATE your home and call 911 or the Fire Department. If not, press the Test/Silence button again and keep ventilating your home.</b>
CO Alarm sounds frequently even though no high levels of CO are revealed in an investigation.	The CO Alarm may be improperly located. Refer to "Where to Install CO Alarms."	Relocate your alarm. If frequent alarms continue, have home rechecked for potential CO problems. You may be experiencing an intermittent CO problem.
*For a list of acceptable replacement batteries, see "Regular Maintenance."		
If you have any questions that cannot be answered by reading this manual, call Consumer Affairs: 1-800-323-9005.		

**LIMITED WARRANTY**

BRK Brands, Inc. ("BRK") the maker of First Alert® brand products warrants that for a period of seven years from the date of purchase, this product will be free from defects in material and workmanship. BRK, at its option, will repair or replace this product or any component of the product found to be defective during the warranty period. Replacement will be made with a new or remanufactured product or component. If the product is no longer available, replacement may be made with a similar product of equal or greater value. This is your exclusive warranty.

This warranty is valid for the original retail purchaser from the date of initial retail purchase and is not transferable. Keep the original sales receipt. Proof of purchase is required to obtain warranty performance. BRK dealers, service centers, or retail stores selling BRK products do not have the right to alter, modify or any way change the terms and conditions of this warranty.

This warranty does not cover normal wear of parts or damage resulting from any of the following: negligent use or misuse of the product, use on improper voltage or current, use contrary to the operating instructions, disassembly, repair or alteration by anyone other than BRK or an authorized service center. Further, the warranty does not cover Acts of God, such as fire, flood, hurricanes and tornadoes or any batteries that are included with this unit.

BRK shall not be liable for any incidental or consequential damages caused by the breach of any express or implied warranty. Except to the extent prohibited by applicable law, any implied warranty of merchantability or fitness for a particular purpose is limited in duration to the duration of the above warranty. Some states, provinces or jurisdictions do not allow the exclusion or limitation of incidental or consequential damages or limitations on how long an implied warranty lasts, so the above limitations or exclusion may not apply to you. This warranty gives you specific legal rights, and you may also have other rights that vary from state to state or province to province.

**How to Obtain Warranty Service:**

Service: If service is required, do not return the product to your retailer. In order to obtain warranty service, contact the Consumer Affairs Division at 1-800-323-9005. To assist us in serving you, please have the model number and date of purchase available when calling.

**For Warranty Service return to:** 1301 Joe Batta, El Paso, TX 79936

**Battery:** BRK Brands, Inc. make no warranty, express or implied, written or oral, including that of merchantability or fitness for any particular purpose with respect to battery.

Visit [www.firstalert.com](http://www.firstalert.com) for more information.

For your records, please record:	
Date Purchased: _____	Where Purchased: _____
Date Installed: _____	Month/Year _____
Replace alarm 7 years after installation. Please write the date in the space provided:	
_____	Month/Year _____

**Fuel-burning appliances like:** portable heater, gas or wood burning fireplace, gas kitchen range or cooktop, gas clothes dryer.

**Damaged or insufficient venting:** corroded or disconnected water heater vent pipe, leaking chimney pipe or flue, or cracked heat exchanger, blocked or clogged chimney opening.

**Improper use of appliance/device:** operating a barbecue grill or vehicle in an enclosed area (like a garage or screened porch).

**Transient CO Problems:** "transient" or on-again-off-again CO problems can be caused by outdoor conditions and other special circumstances.

**The following conditions can result in transient CO situations:**

1. Excessive spillage or reverse venting of fuel appliances caused by outdoor conditions such as:
  - Wind direction and/or velocity, including high gusty winds. Heavy air in the vent pipes (cold/humid air with extended periods between cycles).
  - Negative pressure differential resulting from the use of exhaust fans.
  - Several appliances running at the same time competing for limited fresh air.
  - Vent pipe connections vibrating loose from clothes dryers, furnaces, or water heaters.
  - Obstructions in or unconventional vent pipe designs which can amplify the above situations.
2. Extended operation of unvented fuel burning devices (range, oven, fireplace).
3. Temperature inversions, which can trap exhaust close to the ground.
4. Car idling in an open or closed attached garage, or near a home.

These conditions are dangerous because they can trap exhaust in your home. Since these conditions can come and go, they are also hard to recreate during a CO investigation.

CO Alarm generally sounds an alarm before the onset of symptoms in average, healthy adults.

Why is this important? Because you need to be warned of a potential CO problem while you can still react in time. In many reported cases of CO exposure, victims may not be aware that they are not feeling well, but become disoriented and can no longer react well enough to exit the building or get help. Also, young children and pets may be the first affected. The average healthy adult might not feel any symptoms when the CO Alarm sounds. However, people with cardiac or respiratory problems, infants, unborn babies, pregnant mothers, or elderly people can be more quickly and severely affected by CO. If you experience even mild symptoms of CO poisoning, consult your doctor immediately!

Station carbon monoxide alarms UL2034.

**Standards:** Underwriters Laboratories Inc. Single and Multiple Station carbon monoxide alarms UL2034.

According to Underwriters Laboratories Inc. UL2034, Section 1-1.2: "Carbon monoxide alarms covered by these requirements are intended to respond to the presence of carbon monoxide from sources such as, but not limited to, exhaust from internal-combustion engines, abnormal operation of fuel-fired appliances, and fireplaces. CO Alarms are intended to alarm at carbon monoxide levels below those that could cause a loss of ability to react to the dangers of Carbon Monoxide exposure." This CO Alarm monitors the air at the Alarm, and is designed to alarm before CO levels become life threatening. This allows you precious time to leave the house and correct the problem. This is only possible if Alarms are located, installed, and maintained as described in this manual.

**Gas Detector at Typical Temperature and Humidity Ranges:** The CO Alarm is not formulated to detect CO levels below 30 ppm typically. UL tested for false alarm resistance to Methane (500 ppm), Butane (300 ppm), Heptane (500 ppm), Ethyl Acetate (200 ppm), Isopropyl Alcohol (200 ppm) and Carbon Dioxide (5000 ppm). Values measure gas and vapor concentrations in parts per million.

**Audible Alarm:** 85 dB minimum at 10 feet (3 meters).

**CO Alarms may not be heard.** The alarm horn loudness meets or exceeds current UL standards of 85 dB at 10 feet (3 meters). However, if the CO Alarm is installed outside the bedroom, it may not wake up a sound sleeper or one who has recently used drugs or has been drinking alcoholic beverages. This is especially true if the door is closed or only partly open. Even persons who are awake may not hear the alarm horn if the sound is blocked by distance or closed doors. Noise from traffic, stereo, radio, television, air conditioner, or other appliances may also prevent alert persons from hearing the alarm horn. This CO Alarm is not intended for people who are hearing impaired.

CO Alarms are not a substitute for a smoke alarm. Although fire is a source of carbon monoxide, this CO Alarm does not sense smoke or fire. This CO Alarm senses CO that may be escaping unnoticed from malfunctioning furnaces, appliances, or other sources. Early warning of fire requires the installation of smoke alarms.

CO Alarms are not a substitute for life insurance. Though these CO Alarms warn against increasing CO levels, BRK Brands, Inc. does not warrant or imply in any way that they will protect lives from CO poisoning. Homeowners and renters must still insure their lives.

CO Alarms have a limited life. Although the CO Alarm and all of its parts have passed many stringent tests and are designed to be as reliable as possible, any of these parts could fail at any time. Therefore, you must test your CO Alarm weekly.

CO Alarms are not fireproof. Like all other electronic devices, CO Alarms have limitations. They can only detect CO that reaches their sensors. They may not give early warning to rising CO levels if the CO is coming from a remote part of the home, away from the CO Alarm.



