



USER'S MANUAL

SMOKE ALARM
AC POWERED WITH VOICE & LOCATION

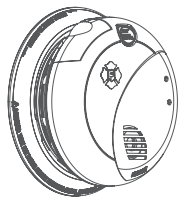
Model SM100V-AC



IMPORTANT! PLEASE READ CAREFULLY AND SAVE.

The warnings/limitations card and manual contains important information about your Smoke Alarm's operation. If you are installing this Alarm for use with others, you must leave this manual—and a copy of it—with the end user.

Para el manual del usuario en español, por favor visite firstalert.com



01 INTRODUCTION

Thank you for choosing First Alert® for your Smoke Alarm needs. You have purchased a state-of-the-art Smoke Alarm designed to provide you with early warning of a fire. Please take the time to read this manual and make the Smoke Alarm an integral part of your family's safety plan.

BASIC SAFETY INFORMATION

IMPORTANT!

- Dangers, Warnings, and Cautions alert you to important operating instructions or to potentially hazardous situations. Pay special attention to these items.
- This Smoke Alarm is approved for use in single-family residences. It is **NOT** designed for marine or RV use.

CAUTION!

- The Smoke Alarm will only indicate the presence of smoke that reaches the sensor.
- The Smoke Alarm is not designed to sense gas, heat or flames.

WARNING!

- This Smoke Alarm cannot operate without working batteries. Removing the batteries for any reason, or failing to replace the batteries at the end of their service life, removes your protection.
- **NEVER** ignore any Alarm. See "If Your Smoke Alarm Sounds" for more information on how to respond to an Alarm. Failure to respond can result in injury or death.
- The Silence Features are for your convenience only and will not correct a problem. See "Using the Silence Features" for details. Always check your home for a potential problem after any Alarm. Failure to do so can result in injury or death.
- Test this Smoke Alarm once a week. If the Alarm ever fails to test correctly, have it replaced immediately! If the Alarm is not working properly, it cannot alert you to a problem.

02 ABOUT SMOKE ALARMS

TYPES OF ALARMS

All these Smoke Alarms are designed to provide early warning of fires if located, installed and cared for as described in the user's manual, and if smoke reaches the Alarm. If you are unsure which type of Smoke Alarm to install, refer the National Fire Protection Association (NFPA) Standard 72 (National Fire Alarm and Signaling Code) and NFPA 101 (Life Safety Code), National Fire Protection Association, One Batterymarch Park, Quincy, MA 02269-9101. Local building codes may also require specific units in new construction or in different areas of the home.

Battery (DC) operated Smoke Alarms: Provide protection even when electricity fails, provided the batteries are fresh and correctly installed. Units are easy to install, and do not require professional installation. However, they do not provide interconnected functionality.

AC powered Smoke Alarms: Can be interconnected so if one unit senses smoke, all units Alarm. They do not operate if electricity fails. **AC with battery (DC) back-up:** will operate if electricity fails, provided the batteries are fresh and correctly installed. AC and AC/DC units must be installed by a qualified electrician.

Smoke Alarms for solar or wind energy users and battery backup power systems: AC powered Smoke Alarms should only be operated with true or pure sine wave inverters. Operating this Alarm with most battery-powered UPS (uninterruptible power supply) products or square wave or "quasi sine wave" inverters will **damage the Alarm**. If you are not sure about your inverter or UPS type, please consult with the manufacturer to verify.

Smoke Alarms for the hearing impaired: Special purpose Smoke Alarms which are installed for the hearing impaired. They include a visual Alarm and an audible Alarm horn, and meet the requirements of the Americans With Disabilities Act. Can be interconnected so if one unit senses smoke, all units Alarm.

Smoke Alarms are not to be used with detector guards unless the combination has been evaluated and found suitable for that purpose.

All First Alert® Smoke Alarms conform to regulatory requirements, including UL217 and are designed to detect particles of combustion. Smoke particles of varying number and size are produced in all fires.

Ionization technology is generally more sensitive than photoelectric technology at detecting small particles, which tend to be produced in greater amounts by flaming fires, which consume combustible materials rapidly and spread quickly. Sources of these fires may include paper burning in a wastebasket, or a grease fire in the kitchen.

Photoelectric technology is generally more sensitive than ionization technology at detecting large particles, which tend to be produced in greater amounts by smoldering fires, which may smolder for hours before bursting into flame. Sources of these fires may include cigarettes burning in couches or bedding.

For maximum protection, use both types of Smoke Alarms on each level and in every bedroom of your home.

03 INSTALLATION

WHERE TO INSTALL THIS ALARM

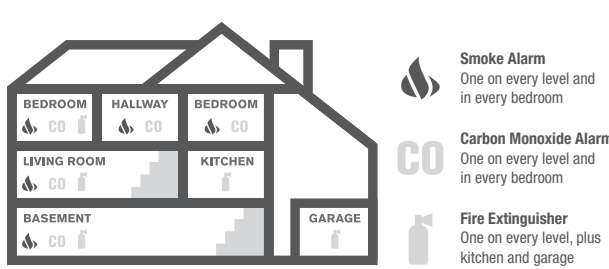
Minimum coverage for Smoke Alarms, as recommended by the National Fire Protection Association (NFPA), is one Smoke Alarm on every level, in every sleeping area, and in every bedroom (See "Regulatory Information for Smoke Alarms" for details on the NFPA recommendations).

NOTE: For added protection, install an additional Smoke/CO Alarm at least 15 feet (4.6 meters) away from the furnace or fuel burning heat source where possible. In smaller homes or in manufactured homes where this distance cannot be maintained, install the Alarm as far away as possible from the furnace or other fuel burning source. Installing the Alarm closer than 15 feet (4.6 meters) will not harm the Alarm, but may increase the frequency of unwanted Alarms.

IN GENERAL, INSTALL SMOKE ALARMS:

- On every level of your home, including finished attics and basements.
- Inside every bedroom, especially if people sleep with the door partly or completely closed.
- In the hall near every sleeping area. If your home has multiple sleeping areas, install a unit in each. If a hall is more than 40 feet (12 meters) long, install a unit at each end.
- At the top of first-to-second level stairs.
- At the bottom of the basement stairs.
- For additional coverage, install Alarms in all rooms, halls, and storage areas, where temperatures normally remain between 40° F and 100° F (4.4° C and 37.8° C).

RECOMMENDED PLACEMENT:



- When installing on the ceiling, place the Alarm as close to the center as possible.
- When installing on the wall, the top edge of Smoke Alarms should be placed between 4 inches (102 mm) and 12 inches (305 mm) from the wall/ceiling line.
- In either case, install at least 4 inches (102 mm) from where the wall and ceiling meet. See "Avoiding Dead Air Spaces" for more information.

NOTE: For any location, make sure no door or other obstruction could keep carbon monoxide or smoke from reaching the Alarm.

WHERE NOT TO INSTALL THIS ALARM

FOR BEST PERFORMANCE, IT IS RECOMMENDED YOU AVOID INSTALLING SMOKE ALARMS IN THESE AREAS:

- In garages, furnace rooms, crawl spaces and unfinished attics. Avoid extremely dusty, dirty or greasy areas.
- Where combustion particles are produced. Combustion particles form when something burns. Areas to avoid include poorly ventilated kitchens, garages, and furnace rooms. Keep units at least 20 feet (6 meters) from the sources of combustion particles (stove, furnace, water heater, space heater) if possible. In areas where a 20-foot (6 meter) distance is not possible—in a modular, mobile, or smaller homes, for example—it is recommended the Smoke Alarm be placed as far from these fuel-burning sources as possible. The placement recommendations are intended to keep these Alarms at a reasonable distance from a fuel-burning source, and thus reduce "unwanted" Alarms. Unwanted Alarms can occur if a Smoke Alarm is placed directly next to a fuel-burning source. Ventilate these areas as much as possible.
- Within 5 feet (1.5 meters) of any cooking appliance. In air streams near kitchens. Air currents can draw cooking smoke into the smoke sensor and cause unwanted Alarms.
- In extremely humid areas. This Alarm should be at least 10 feet (3 meters) from a shower, sauna, humidifier, vaporizer, dishwasher, laundry room, utility room, or other source of high humidity.
- In direct sunlight.

- In turbulent air, like near ceiling fans or open windows. Blowing air may prevent smoke from reaching the sensors.
- In areas where temperature is colder than 40° F (4.4° C) or hotter than 100° F (37.8° C). These areas include non air-conditioned crawl spaces, unfinished attics, uninsulated or poorly insulated ceilings, porches, and garages.
- In insect infested areas. Insects can clog the openings to the sensing chamber.
- Less than 12 inches (305 mm) away from fluorescent lights. Electrical "noise" can interfere with the sensor.
- In "dead air" spaces.

AVOIDING DEAD AIR SPACES

"Dead air" spaces may prevent smoke from reaching the Smoke Alarm. To avoid dead air spaces, follow installation recommendations below.

On ceilings, install Smoke Alarms as close to the center of the ceiling as possible. If it is not possible, install the Smoke Alarm at least 4 inches (102 mm) from the wall or corner.

For wall mounting (if allowed by building codes), the top edge of Smoke Alarms should be placed between 4 inches (102 mm) and 12 inches (305 mm) from the wall/ceiling line, below typical "dead air" spaces.

On a peaked, gabled, or cathedral ceiling, install the first Smoke Alarm within 3 feet (0.9 meters) of the peak of the ceiling, measured horizontally. Additional Smoke Alarms may be required depending on the length, angle, etc. of the ceiling's slope. Refer to NFPA 72 for details on requirements for sloped or peaked ceilings.

HOW TO INSTALL THIS ALARM

IMPORTANT!

This Smoke Alarm is designed to be mounted on any standard wiring junction box up to a 4-inch (10 cm) size, on either the ceiling or wall (if allowed by local codes). Read "Where to Install This Alarm" and "Where This Alarm Should Not Be Installed" before you begin installation.

Tools you will need: needle-nose pliers or utility knife, standard flathead screwdriver, wire strippers

▲ WARNING!

Make sure the Alarm is not receiving excessively noisy power. Examples of noisy power could be major appliances on the same circuit, power from a generator or solar power, light dimmer on the same circuit or mounted near fluorescent lighting. Excessively noisy power may cause damage to your Alarm.

THE PARTS OF THIS ALARM

The Mounting Bracket: To remove the mounting bracket from the Alarm base, hold the Alarm base firmly and twist the mounting bracket counterclockwise. The mounting bracket installs onto the junction box. It has a variety of screw slots to fit most boxes.

The Power Connector: The power connector plugs into a power input block on the Alarm. It supplies the unit with AC power.

- The black wire is "hot."
- The white wire is neutral.
- The orange wire is used for interconnect.

If you need to remove the power connector, turn **POWER OFF** first. Insert a flat screwdriver blade between the power connector and the security tab inside the power input block. Gently pry back the tab and pull the connector free.

THE PARTS OF THIS SMOKE ALARM

- Mounting Bracket
- Mounting Slots
- Locking Pins (break out of bracket)
- Hot (Black) AC Wire
- Neutral (White) AC Wire
- Interconnect (Orange) Wire
- Quick-Connect Power Connector
- Turn this way to remove from bracket
- Turn this way to attach to bracket
- Slide-Out Battery Drawer

FOLLOW THESE SIMPLE STEPS

The basic installation of this Smoke Alarm is similar whether you wish to install one Alarm, or interconnect more than one Alarm. If you are interconnecting more than one Alarm, you **MUST** read "Special Requirements For Interconnected Alarms" below before you begin installation.

▲ DANGER!

ELECTRICAL SHOCK HAZARD. Turn off power to the area where you will install this unit at the circuit breaker or fuse box before beginning installation. Failure to turn off the power before installation may result in serious electrical shock, injury or death.

- Remove the mounting bracket from the base, and attach it to the junction box.
- Using wire nuts, connect the power connector to the household wiring.

STAND-ALONE ALARM ONLY:

- Connect the white wire on the power connector to the neutral wire in the junction box.
- Connect the black wire on the power connector to the hot wire in the junction box.
- Tuck the orange wire inside the junction box. It is used for interconnect only.

INTERCONNECTED UNITS ONLY:

- **Strip off about 1/2" (12 mm) of the plastic coating on the orange wire on the power connector.**
- Connect the white wire on the power connector to the neutral wire in the junction box.
- Connect the black wire on the power connector to the hot wire in the junction box.
- Connect the orange wire on the power connector to the interconnect wire in the junction box. Repeat for each unit you are interconnecting. Never connect the hot or neutral wires in the junction box to the orange interconnect wire. Never cross hot and neutral wires between Alarms.

- If there's a battery pull tab, activate the battery back-up by removing the "Pull to Activate Battery Back-Up" tab. If batteries are not installed, install battery back-up. Battery back-up cannot work until you install the battery in the correct position (Match "+" to "+" and "-" to "-").
- Plug the power connector into the back of the Alarm.

- Position the base of the Alarm over the mounting bracket, and turn the Alarm clockwise (right) until the unit is in place. If wall mounted, adjust unit so words are level.
- Check all connections.

▲ WARNING!

Improper wiring of the power connector or the wiring leading to the power connector will cause damage to the Alarm and may lead to a non-functioning Alarm.

STAND-ALONE ALARM ONLY:

- If you are only installing one Alarm, restore power to the junction box.

INTERCONNECTED UNITS ONLY:

- If you are interconnecting multiple Alarms, repeat steps 1-6 for each Alarm in the series. When you are finished, restore power to the junction box.

▲ DANGER!

ELECTRICAL SHOCK HAZARD. Do not restore power until all Alarms are completely installed. Restoring power before installation is complete may result in serious electrical shock, injury or death.

- Turn AC power back on. Under normal operation, the Green power indicator light will shine continuously.
- If the Green power indicator light does not light, **TURN OFF POWER TO THE JUNCTION BOX** and check all connections. If all connections are correct and the Green power indicator still does not light when you restore the power, the unit should be replaced immediately.

- Test each Alarm. Press and hold the Test/Silence button until the unit Alarms. **When testing a series of interconnected units you must test each unit individually. Make sure all units Alarm when each one is tested.**

▲ DANGER!

If any unit in the series does not Alarm, **TURN OFF POWER** and recheck connections. If it does not Alarm when you restore power, replace it immediately.

SPECIAL REQUIREMENTS FOR INTERCONNECTED ALARMS

▲ WARNING!

- Failure to meet any of the above requirements could damage the units and cause them to malfunction, removing your protection.
- **AC and AC/DC Alarms can be interconnected. Under AC power, all units will Alarm when one senses smoke or CO. When power is interrupted, only the AC/DC units in the series will continue to send and receive signals. AC powered Alarms will not operate.**

Interconnected units can provide earlier warning of fire than stand-alone units, especially if a fire starts in a remote area of the dwelling. If any unit in the series senses smoke, all units will Alarm. To determine which Alarm initiated an Alarm, see table:

During an Alarm	On Initiating Alarm(s): Red LED(s) flashes (flash) rapidly
	On All Other Alarms: Red LED is Off
After an Alarm (Latching)	On Initiating Alarm(s): Red LED(s) On for 2 seconds/Off for 2 seconds
	On All Other Alarms: Green LED(s) On, Red LED(s) Off

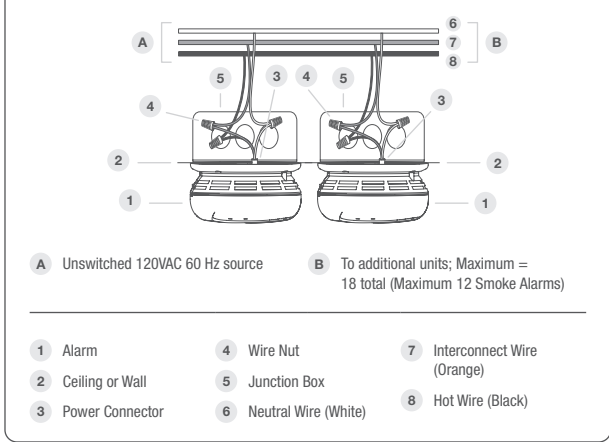
COMPATIBLE INTERCONNECTED UNITS

IMPORTANT!

Interconnect units within a single family residence only. Otherwise all households will experience unwanted alarms when they test any unit in the series. Interconnected units will only work if they are wired to compatible units and all requirements are met. This unit is designed to be compatible with: First Alert® Smoke Alarm Model: SM100V-AC, and Smoke/CO Models: SMCO100V-AC, SMCO100V-AC; BRK Electronics® Smoke Alarm Models 9120, 9120B, SC9120B, 7010, 7010B, 4120SB, BRK Electronics® Heat Alarm Models HD6135F; BRK Electronics® CO Alarm Models CO5120BN, CO5120PBN; Smoke/CO Alarm Model SC7010BV, SC7101B.

INTERCONNECTED UNITS MUST MEET ALL OF THE FOLLOWING REQUIREMENTS:

- A maximum of 18 compatible units may be interconnected (Maximum of 12 Smoke Alarms).
- The same fuse or circuit breaker must power all interconnected units.
- The total length of wire interconnecting the units should be less than 1000 feet (300 meters). This type of wire is commonly available at Hardware and Electrical Supply stores.
- All wiring must conform to all local electrical codes and NFPA 70 (NEC). Refer to NFPA 72, NFPA 101, and/or your local building code for further connection requirements.



STEP BY STEP GUIDE TO PROGRAMMING THIS ALARM

For First Time and When Changing Batteries

Action	Alarm Will Say
Insert batteries (2 AA batteries)	"Welcome, First Alert Smoke Alarm." "No location programmed" if first time or "[Location, example: 'Basement'] location programmed" when changing batteries. "To select location, press and hold test button now."
Press & hold test button if you would like to program the location or change the location of the Alarm. Release button after Alarm responds.	"To save location, press and hold test button after location is heard." Alarm will speak list of locations (see below).
After you hear the location of where you are placing the Alarm, press & hold the test button.	"[Location, example: 'Basement'] location saved." If no location is chosen: "No location saved."

Your Alarm has now been programmed for the location of your choice.

Available Locations: Basement, Hallway, Office, Child's Bedroom, Kitchen, Utility Room, Dining Room, Living Room, Family Room, Master Bedroom, Guest Bedroom, No Location.

For Reprogramming: When it is necessary to reprogram the Alarm after the unit has been activated and is in normal operation: Tap the test button 5 times to reset the Alarm to again access the programming menu.

Action	What You Will See & Hear
Normal Operations	Voice: Silent; Power/Smoke LED: Constant Green; Horn: Silent
When You Test the Alarm	Voice: "Testing." Horn: 3 beeps, pause, 3 beeps; Voice: "Warning, evacuate smoke in [Location, example: "Basement"]." Power/Smoke LED: 3 Green Flashes approximately once a minute
If Battery Becomes Low or is Missing	Voice: "Replace battery in [Location, example: "Basement"]." Repeated every 5 hours; Horn: chirps once a minute; Power/Smoke LED: Flashes Green On for 2 seconds/Off for 2 seconds. Low Battery Latch is now engaged. Flashes Green once a minute if AC power is off.
If Alarm is Not Operating Properly (MALFUNCTION SIGNAL)	Voice: "Detector error in [Location, example "Basement"]." please see manual." Repeated every 5 hours; Horn: 3 chirps every minute; Power/Smoke LED: 3 Green Flashes approximately once a minute
Alarm has reached its End of Life	Voice: "Detector error in [Location, example "Basement"]." please see manual." Repeated every 5 hours; Horn: 5 chirps every minute; Power/Smoke LED: 5 Green Flashes approximately once a minute
Smoke is Detected	Horn: 3 beeps, pause, repeating 9 times; Voice: "Warning, evacuate smoke in [Location, example: "Basement"]." Evacuate." Horn: 3 beeps, pause, repeating 2 times followed by Voice Warning above; Power/Smoke LED: During Alarm: Flashes Red in sync with the horn pattern. After Alarm: Flashes Red On for 2 seconds/Off for 2 seconds. Smoke Alarm Latch is now engaged.
Smoke Alarm is Silenced	Voice: "Horn silenced. Detector active."; Horn: Off; Power/Smoke LED: Flashes Red

04 ALARM FEATURES

- **Voice & Location Alerts:** Friendly voice tells you what the danger is and it's location.
- **Early Warning Interconnect:** Interconnects Alarm sounds, all compatible Alarms sound.
- **Quick Connect Plug:** Allows for easy installation. No need to rewire.

LOCKING FEATURES

The locking features are designed to discourage unauthorized removal of the batteries or Alarm. It is not necessary to activate the locks in single-family households where unauthorized battery or Alarm removal is not a concern.

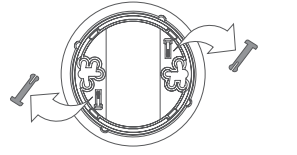
These Alarms have two separate locking features: one to lock the battery compartment, and the other to lock the Alarm to the mounting bracket. You can choose to use either feature independently, or use them both.

Tools you will need: Needle-nose pliers, Standard Flathead screwdriver.

- Both locking features use locking pins, which are molded into the mounting bracket. Using needle-nose pliers, remove one or both pins from the mounting bracket, depending on how many locking features you want to use.

IMPORTANT!

To permanently remove either lock, insert a flathead screwdriver between the locking pin and the lock, and pry the pin out of the lock.



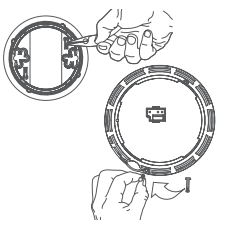
TO LOCK THE BATTERY COMPARTMENT
Do not lock the battery compartment until you have installed the battery and tested the battery back-up.

- Push and hold Test/Silence button until the Alarm sounds.

IMPORTANT!
If the unit does not Alarm during testing, **DO NOT lock the battery compartment. Install a new battery and test again.** If the Alarm still does not Alarm, replace it immediately.

- Using needle-nose pliers, detach one locking pin from the mounting bracket.

- Push the locking pin through the hole near the battery drawer on the back of the Alarm.



TO UNLOCK THE BATTERY COMPARTMENT

IMPORTANT!
Once the Alarm is installed, you must disconnect it from the AC power before unlocking the battery compartment.

▲ DANGER!
ELECTRICAL SHOCK HAZARD. Turn off the power to the area where the Alarm is installed before removing it from the mounting bracket. Failure to turn off the power first may result in serious electrical shock, injury or death.

▲ WARNING!
Always discharge the branch circuit before servicing an AC or AC/DC Alarm. First, turn off the AC power at the circuit breaker or fuse box. Next, remove the battery from Alarms with battery back-up. Finally, press and hold the Test/Silence button for 5-10 seconds to discharge the branch circuit.

- Remove the Alarm from the mounting bracket. If the unit is locked to the bracket, see the section "To Unlock the Mounting Bracket."

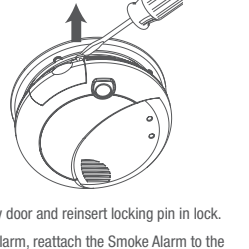
- Disconnect the power connector by gently prying it away from the back of the Alarm.

- Insert a flathead screwdriver under the head of the locking pin, and gently pry it out of the battery compartment lock. (If you plan to relocate the battery compartment, save the locking pin.)

- To relocate the battery compartment, close the battery door and reinsert locking pin in lock.

- Reconnect the power connector to the back of the Alarm, reattach the Smoke Alarm to the mounting bracket, and restore the power.

IMPORTANT!
When replacing the batteries, always test the Alarm before relocking the battery compartment.



TO LOCK THE MOUNTING BRACKET

- Using needle-nose pliers, detach one locking pin from mounting bracket.

- Insert the locking pin into the lock located opposite from the battery drawer as shown in the diagram.

- When you attach the Alarm to the mounting bracket, the locking pin's head will fit into a notch on the bracket.



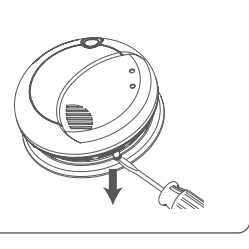
TO UNLOCK THE MOUNTING BRACKET

▲ DANGER!
ELECTRICAL SHOCK HAZARD. Turn off the power to the area where the Alarm is installed before removing it from the mounting bracket. Failure to turn off the power first may result in serious electrical shock, injury or death.

▲ WARNING!
Always discharge the branch circuit before servicing an AC or AC/DC Alarm. First, turn off the AC power at the circuit breaker or fuse box. Next, remove the battery from Alarms with battery back-up. Finally, press and hold the Test/Silence button for 5-10 seconds to discharge the branch circuit.

- Insert a flathead screwdriver between the mounting bracket pin and the mounting bracket.

- Pry the Alarm away from the bracket by turning both the screwdriver and the Alarm counterclockwise (left) at the same time.



05 TESTING & MAINTENANCE

WEEKLY TESTING

▲ WARNING!

- NEVER** use an open flame of any kind to test this Alarm. You might accidentally damage or set fire to the unit or to your home. **NEVER** use vehicle exhaust! Exhaust may cause permanent damage and voids your warranty.
- If the Alarm ever fails to test properly, replace it immediately. Products under warranty may be returned to the manufacturer for replacement. See "Limited Warranty" at the end of this manual.

▲ CAUTION!
It is important to test this unit every week to make sure it is working properly. Using the test button is the recommended way to test this Smoke Alarm.

You can test this Smoke Alarm pressing and holding the Test/Silence button on the Alarm cover until Alarm Voice says "Testing" (typically 3-5 seconds).

Activate the Alarm test, reset or silence function by use of a finger or thumb. Use of any other instrument is strictly prohibited.

During testing, you will see and hear the following sequence:

- The Alarm Voice will say "Testing." The Horn will sound 3 beeps, pause, 3 beeps. The Alarm Voice will say "Warning, evacuate smoke in [Location, example: "Basement"]. Evacuate." The Power/Smoke LED flashes Red.

If the unit does not Alarm, make sure the batteries are correctly installed, and test again. If the unit still does not Alarm, replace it immediately.

REGULAR MAINTENANCE

This unit has been designed to be as maintenance-free as possible, but there are a few simple things you must do to keep it

11 GENERAL LIMITATIONS OF SMOKE ALARMS

This Smoke Alarm is intended for residential use. It is not intended for use in industrial applications where Occupational Safety and Health Administration (OSHA) requirements for Smoke Alarms must be met. The Smoke Alarm is not intended to alert hearing impaired residents. Special purpose Smoke Alarms should be installed for hearing impaired residents.

Smoke Alarms may not waken all individuals. Practice the escape plan at least twice a year, making sure that everyone is involved – from kids to grandparents. Allow children to master fire escape planning and practice before holding a fire drill at night when they are sleeping. If children or others do not readily waken to the sound of the Smoke Alarm, or if there are infants or family members with mobility limitations, make sure that someone is assigned to assist them in fire drill and in the event of an emergency. It is recommended that you hold a fire drill while family members are sleeping in order to determine their response to the sound of the Smoke Alarm while sleeping and to determine whether they may need assistance in the event of an emergency.

Smoke Alarms cannot work without power. Battery operated units cannot work if the batteries are missing, disconnected or dead, if the wrong type of batteries are used, or if the batteries are not installed correctly. AC units cannot work if the AC power is cut off for any reason (open fuse or circuit breaker, failure along a power line or at a power station, electrical fire that burns the electrical wires, etc.). If you are concerned about the limitations of battery or AC power, install both types of units.

This Smoke Alarm will not sense smoke that does not reach the sensors. It will only sense smoke at the sensor. **Smoke may be present in other areas.** Doors or other obstructions may affect the rate at which smoke reaches the sensors. If bedroom doors are usually closed at night, we recommend you install an Alarm device (Combination CO and Smoke Alarm, or separate CO Alarms and Smoke Alarms) in each bedroom and in the hallway between them.

This Smoke Alarm may not sense smoke on another level of the home. Example: This Alarm device, installed on the second floor, may not sense smoke in the basement. For this reason, one Alarm device may not give adequate early warning. Recommended minimum protection is one Alarm device in every sleeping area, every bedroom, and on every level of your home. Some experts recommend battery powered Smoke Alarms be used in conjunction with interconnected AC powered Smoke Alarms. For details, see "About Smoke Alarms" for details.

Smoke Alarms may not be heard. The Alarm horn loudness meets or exceeds current UL standards of 85 dB at 10 feet (3 meters). However, if the Smoke Alarm is installed outside the bedroom, it may not wake up a sound sleeper or one who has recently used drugs or has been drinking alcoholic beverages. This is especially true if the door is closed or only partly open. Even persons who are awake may not hear the Alarm horn if the sound is blocked by distance or closed doors. Noise from traffic, stereo, radio, television, air conditioner, or other appliances may also prevent alert persons from hearing the Alarm horn. This Smoke Alarm is not intended for people who are hearing impaired.

The Alarm may not have time to Alarm before the fire itself causes damage, injury, or death, since smoke from some fires may not reach the unit immediately. Examples of this include persons smoking in bed, children playing with matches, when a person's clothing catches fire while cooking, fires caused by violent explosions resulting from escaping gas, or incendiary fires where the fire grows so rapidly that an occupant's egress is blocked even with properly located Smoke Alarms.

This Smoke Alarm is not a substitute for life insurance. Though this Smoke Alarm warns against the presence of smoke, First Alert does not warrant or imply in any way that they will protect lives. Homeowners and renters must still insure their lives.

This Smoke Alarm has a limited life. Although this Smoke Alarm and all of its parts have passed many stringent tests and are designed to be as reliable as possible, any of these parts could fail at any time. Therefore, you must test this device weekly. The unit should be replaced immediately if it is not operating properly.

This Smoke Alarm is not foolproof. Like all other electronic devices, this Smoke Alarm has limitations. It can only detect smoke that reaches the sensors. It may not give early warning of the source of smoke in a remote part of the home, away from the Alarm device.

12 LIMITED WARRANTY

First Alert® warrants that for a period of ten years from the date of purchase, this product will be free from defects in material and workmanship. First Alert, at its option, will repair or replace this product or any component of the product found to be defective during the warranty period. Replacement will be made with a new or remanufactured product or component. If the product is no longer available, replacement may be made with a similar product of equal or greater value. This is your exclusive warranty.

This warranty is valid for the original retail purchaser from the date of initial retail purchase and is not transferable. Keep the original sales receipt. Proof of purchase is required to obtain warranty performance. First Alert dealers, service centers, or retail stores selling First Alert products do not have the right to alter, modify or any way change the terms and conditions of this warranty.

This warranty does not cover normal wear of parts or damage resulting from any of the following: negligent use or misuse of the product, use on improper voltage or current, use contrary to the operating instructions, disassembly, repair or alteration by anyone other than First Alert or an authorized service center. Further, the warranty does not cover Acts of God, such as fire, flood, hurricanes and tornadoes or any batteries that are included with this unit.

First Alert shall not be liable for any incidental or consequential damages caused by the breach of any express or implied warranty. Except to the extent prohibited by applicable law, any implied warranty of merchantability or fitness for a particular purpose is limited in duration to the duration of the above warranty. Some states, provinces or jurisdictions do not allow the exclusion or limitation of incidental or consequential damages or limitations on how long an implied warranty lasts, so the above limitations or exclusion may not apply to you. This warranty gives you specific legal rights, and you may also have other rights that vary from state to state or province to province.

HOW TO OBTAIN WARRANTY SERVICE

Service: If service is required, do not return the product to your retailer. In order to obtain warranty service, contact the Consumer Support Team at 1-800-323-9005. To assist us in serving you, please have the model number and date of purchase available when calling.

Battery: First Alert makes no warranty, express or implied, written or oral, including that of merchantability or fitness for any particular purpose with respect to battery.

Disposal: Please follow local guidelines regarding the disposal or recycling of batteries and/or electronics.

For your records, please record:
Date Purchased: _____
Where Purchased: _____
Date Installed: _____ / _____ Month/Year
Replace Alarm 10 years after installation.
Please write the date in the space provided: _____ / _____ Month/Year

The Alarm will also provide an audible End-of-Life Signal approximately 10 years after installation to remind you to replace the unit.

The End-of-Life Signal can be silenced for up to 2 days. Do not unplug or deactivate the Alarm until you get replacement.

Printed in Mexico | M08-179717 12/22

CONFORMS TO UL STD 217

120 VAC ~ 60Hz, 0.07A

firstalert.com



© 2022 Resideo Technologies, Inc. All rights reserved. These products are manufactured by Resideo Technologies, Inc. and its affiliates. 3901 Liberty Street, Aurora, IL 60504-8122. Consumer Support Team: (800) 323-9005 | firstalert.com