



PART #	
JOB NAME	
TYPE	



With up to 146 lumens per watt, and up to 25 years of virtually maintenance free operation, learn why smart decision makers use the The Linear Transformer (LBI) when upgrading to LED.

**SUPERflex**  
**SWITCH BETWEEN  
 3 WATTAGES &  
 3 COLOR TEMPS**

- Link 33 4ft units together @ 120VAC or 40 4ft units @ 277VAC (see page 5 for more details)
- Perfect replacement for: linear and general purpose strips, troffers, vapor tight fixtures, low and high bay fixtures, cove lighting, stairwells and much more.
- SuperFlex technology allows for 9 skus in one product.
- Use a number of controls and sensors with FlexControl technology.
- Use our various accessories to mount the LBI in many different locations.

10 YEAR WARRANTY	120-277V* *240-347V FOR CANADA ONLY	146 LPW EFFICACY	<20% THD >0.9 PWR FACTOR	80+ CRI (UNLESS NOTED)	0-10V DIM TO OFF 12V AUX	OCC	120° BEAM ANGLE	EMG OPTIONAL EMG BATTERY BACKUP	-13°F TO 140°F OPERATING TEMP

### DEFAULT CONFIGURATIONS

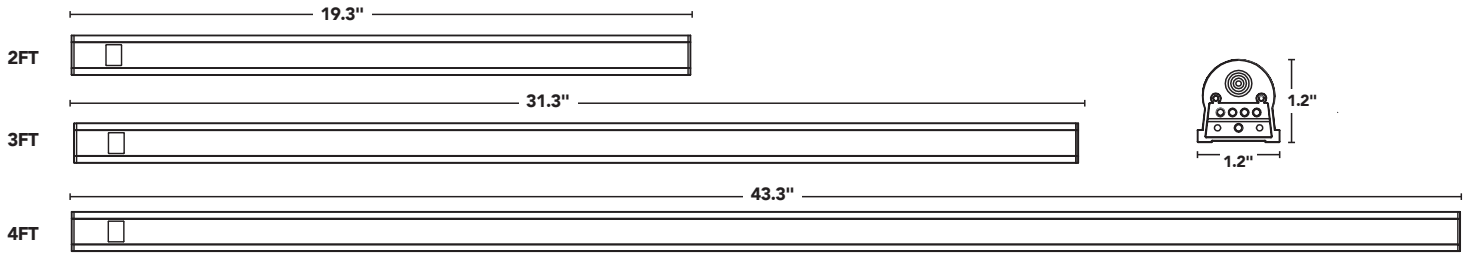
PART #	UPC	DESCRIPTION	LUMENS*	WATTAGE	COLOR
RP-LBI-G1-2F-6W-27K-WC2	844006024826	2FT PRO WARM CCT INTERNAL DRIVE LIGHT BAR	696-1524	FLEXWATT 6W/9W/12W	FLEXCOLOR 2700/3000K/3500K
RP-LBI-G1-2F-6W-40K-WC	844006023867	2FT PRO INTERNAL DRIVE LIGHT BAR	780-1560		FLEXCOLOR 3500/4000K/5000K
RP-LBI-G1-3F-10W-27K-WC2	844006024833	3FT PRO WARM CCT INTERNAL DRIVE LIGHT BAR	1270-1980	FLEXWATT 10W/12W/15W	FLEXCOLOR 2700/3000K/3500K
RP-LBI-G1-3F-10W-40K-WC	844006023959	3FT PRO INTERNAL DRIVE LIGHT BAR	1400-2100		FLEXCOLOR 3500/4000K/5000K
RP-LBI-G1-4F-15W-27K-WC2	844006024840	4FT PRO WARM CCT INTERNAL DRIVE LIGHT BAR	1260-3400	FLEXWATT 10W/15W/25W	FLEXCOLOR 2700/3000K/3500K
RP-LBI-G1-4F-15W-40K-WC	844006024079	4FT PRO INTERNAL DRIVE LIGHT BAR	1462-3653		FLEXCOLOR 3500/4000K/5000K

### POPULAR ACCESSORIES

#### SOLD SEPERATELY

--	--	--	--	--	--







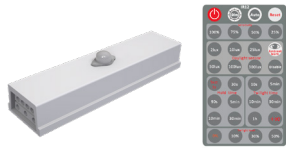

### PART NUMBER BUILDER

MFR	PRODUCT	GENERATION	LENGTH	WATTAGE	COLOR	FUNCTION
RP	LBI	G1				
			2F	6W 9W 12W	27K = 2700K	WC2 = WATTAGE + COLOR SELECTABLE WARM COLOR TEMPERATURES
			3F	10W 12W 15W	30K = 3000K	WC = WATTAGE + COLOR SELECTABLE NORMAL COLOR TEMPERATURES
			4F	10W 15W 25W	35K = 3500K	
					40K = 4000K 50K = 5000K	

### EXAMPLE PART NUMBER

RP-LBI-G1-2F-6W-40K-WC

### CONTROL OPTIONS

RP-LBI-OC2-A/ RP-LBI-OC3-A	RP-LBI-BLE-A	RP-LBI-PIR-A	RP-LBI-BLE-PIR-A
LBI IN LINE MICROWAVE OCCUPANCY SENSOR IR11 REMOTE	LBI IN LINE SILVAIR BLUETOOTH NODE SILVAIR APP	LBI IN LINE PASSIVE INFERRED OCCUPANCY SENSOR IR11 REMOTE	LBI IN LINE SILVAIR BLUETOOTH NODE WITH PASSIVE INFERRED OCCUPANCY SENSOR SILVAIR APP
			

### FLEXWATT LUMENS @ 3500K

SIZE	POSITION 1	POSITION 2	POSITION 3
2FT	6W (706LM)	9W (1063LM)	12W (1419LM)
3FT	10W (1335LM)	12W (1648LM)	15W (1961LM)
4FT	10W (1344LM)	15W (2255LM)	25W (3166LM)

### FLEXCOLOR SWITCH POSITION

COLOR TEMPS	POSITION 1	POSITION 2	POSITION 3
WARM (WC2)	2700K	3000K	3500K
STANDARD (WC)	3500K	4000K	5000K



### 9 SKUs in 1 WITH FLEXWATT™ & FLEXCOLOR™ TECHNOLOGY

	2FT	6W	9W	12W
	3FT	10W	12W	15W
	4FT	10W	15W	25W

- Eliminate ordering and stocking multiple wattages and color temperatures. Product offers 9 SKUs in 1 unit which can easily be configured to 3 different wattage packages and 3 different CCTs.

		2700°K WARM		3500°K NEUTRAL
		3000°K WARM		4000°K NEUTRAL
		3500°K NEUTRAL		5000°K COOL

- Product ships at a default color temp (K) and wattage setting (install as is, or tailor the settings to fit your needs).
- Save on labor costs by having us factory pre-set the wattage and color temperature.

### FLEXCONTROL™ TECHNOLOGY

- Order control ready or basic control (integrated high/low and daylight sensor) or advanced controls (such as, Philips Easy Sense, Avi-On Bluetooth or Lutron Vive).
- Optional sensors are directly linkable to the light bars.
- Our basic motion/daylight control (OC2 ordering code) is adjustable via remote control for (1) sensitivity (2)duration of time at high light level before dimming to low (2)duration of time at low light level before turning off (3)ramping up and down light levels based on daylight and (4) the dimmed light level %.

### SUITABLE FOR DRY & DAMP LOCATIONS

### PASS-THROUGH 0-10V DIMMING & AUXILIARY 12V OUTPUT

- Allows all light bars to be dimmed together as a group.

### ADAPTABLE MOUNTING

- Various mounting clip options with integrated rare-earth magnets for easy placement in all style fixtures.
- High Bay pendant chain options available.

### CONNECT UP TO 40 LIGHT BARS ON ONE INCOMING POWER CABLE

(CHECK LINKING CHART FOR VOLTAGE SPECIFIC LINKING QUANTITY)

### Up to 146 LUMENS PER WATT EFFICACY

### 10 YEAR WARRANTY, L70 >100,000HRS

### OPTIONAL EMERGENCY BATTERY BACKUP

### OPTIONAL BAA SECTION 1605

(If you require BAA (ARRA Section 1605) add -AA at end of part number.)



## LINEAR AMBIENT

	PART #	DLC CODE	STANDARD/ PREMIUM	PRIMARY USE	# OF BARS	WATTAGE PER BAR	COLOR TEMP	TOTAL WATTAGE	TOTAL LUMENS
2FT	RP-LBI-G1-2F-6W-XXX-[WC,W]-[HV,Blank]-[Blank,OCN]-[Blank,BAA]	S-E4YHPK	Standard	Direct Linear Ambient Luminaires	1	6	35/40/50K	6	706
	RP-LBI-G1-2F-6W-XXX-[WC2,W]-[HV,Blank]-[Blank,OCN]-[Blank,BAA]	S-KI9ETC	Standard	Direct Linear Ambient Luminaires	1	6	27/30/35K	6	682
	RP-LBI-G1-2F-9W-XXX-[WC,W]-[HV,Blank]-[Blank,OCN]-[Blank,BAA]	S-2WQ4GZ	Standard	Direct Linear Ambient Luminaires	1	9	35/40/50K	9	1062
	RP-LBI-G1-2F-9W-XXX-[WC2,W]-[HV,Blank]-[Blank,OCN]-[Blank,BAA]	S-D5AI27	Standard	Direct Linear Ambient Luminaires	1	9	27/30/35K	9	1038
	RP-LBI-G1-2F-12W-XXX-[WC,W]-[HV,Blank]-[Blank,OCN]-[Blank,BAA]	S-5O1BQT	Standard	Direct Linear Ambient Luminaires	1	12	35/40/50K	12	1419
3FT	RP-LBI-G1-3F-10W-XXX-[WC,W]-[HV,Blank]-[Blank,OCN]-[Blank,BAA]	S-SAGNV4	Standard	Direct Linear Ambient Luminaires	1	10	35/40/50K	10	1335
	RP-LBI-G1-3F-10W-XXX-[WC2,W]-[HV,Blank]-[Blank,OCN]-[Blank,BAA]	S-0A3PXW	Standard	Direct Linear Ambient Luminaires	1	10	27/30/35K	10	1267
	RP-LBI-G1-3F-12W-XXX-[WC,W]-[HV,Blank]-[Blank,OCN]-[Blank,BAA]	S-7HXUCZ	Standard	Direct Linear Ambient Luminaires	1	12	35/40/50K	12	1648
	RP-LBI-G1-3F-12W-XXX-[WC2,W]-[HV,Blank]-[Blank,OCN]-[Blank,BAA]	S-M0PSAV	Standard	Direct Linear Ambient Luminaires	1	12	27/30/35K	12	1554
	RP-LBI-G1-3F-15W-XXX-[WC,W]-[HV,Blank]-[Blank,OCN]-[Blank,BAA]	S-B34TJ	Standard	Direct Linear Ambient Luminaires	1	15	35/40/50K	15	1961
4FT	RP-LBI-G1-3F-15W-XXX-[WC2,W]-[HV,Blank]-[Blank,OCN]-[Blank,BAA]	S-BVPFAT	Standard	Direct Linear Ambient Luminaires	1	15	27/30/35K	15	1842
	RP-LBI-G1-4F-10W-XXX-[WC,W]-[HV,Blank]-[Blank,OCN]-[BAA,Blank]-2xYYY	S-12GC94	Standard	Retrofit Kits for Direct Linear Ambient Luminaires	2	10	35/40/50K	20	2527
	RP-LBI-G1-4F-10W-XXX-[WC,W]-[HV,Blank]-[Blank,OCN]-[BAA,Blank]-3xYYY	S-QOGLP6	Standard	Retrofit Kits for Direct Linear Ambient Luminaires	3	10	35/40/50K	30	3758
	RP-LBI-G1-4F-10W-XXX-[WC,W]-[HV,Blank]-[Blank,OCN]-[Blank,BAA]	S-4J238A	Standard	Direct Linear Ambient Luminaires	1	10	35/40/50K	10	1344
	RP-LBI-G1-4F-10W-XXX-[WC2,W]-[HV,Blank]-[Blank,OCN]-[BAA,Blank]-2xYYY	S-U5M1E5	Standard	Retrofit Kits for Direct Linear Ambient Luminaires	2	10	27/30/35K	20	2514
	RP-LBI-G1-4F-10W-XXX-[WC2,W]-[HV,Blank]-[Blank,OCN]-[BAA,Blank]-3xYYY	S-5H1OJ6	Standard	Retrofit Kits for Direct Linear Ambient Luminaires	3	10	27/30/35K	30	3692
	RP-LBI-G1-4F-10W-XXX-[WC2,W]-[HV,Blank]-[Blank,OCN]-[Blank,BAA]	S-WBXZKE	Standard	Direct Linear Ambient Luminaires	1	10	27/30/35K	10	1198
	RP-LBI-G1-4F-15W-XXX-[WC,W]-[HV,Blank]-[Blank,OCN]-[BAA,Blank]-2xYYY	S-729LG8	Standard	Retrofit Kits for Direct Linear Ambient Luminaires	2	15	35/40/50K	30	3762
	RP-LBI-G1-4F-15W-XXX-[WC,W]-[HV,Blank]-[Blank,OCN]-[BAA,Blank]-3xYYY	S-6HZX92	Standard	Retrofit Kits for Direct Linear Ambient Luminaires	3	15	35/40/50K	45	5693
	RP-LBI-G1-4F-15W-XXX-[WC2,W]-[HV,Blank]-[Blank,OCN]-[Blank,BAA]	S-F0N516	Standard	Direct Linear Ambient Luminaires	1	15	35/40/50K	15	2255
	RP-LBI-G1-4F-15W-XXX-[WC2,W]-[HV,Blank]-[Blank,OCN]-[BAA,Blank]-2xYYY	S-2NIW3X	Standard	Retrofit Kits for Direct Linear Ambient Luminaires	2	15	27/30/35K	30	3638
	RP-LBI-G1-4F-15W-XXX-[WC2,W]-[HV,Blank]-[Blank,OCN]-[BAA,Blank]-3xYYY	S-IN462Q	Standard	Retrofit Kits for Direct Linear Ambient Luminaires	3	15	27/30/35K	45	5631
	RP-LBI-G1-4F-15W-XXX-[WC2,W]-[HV,Blank]-[Blank,OCN]-[Blank,BAA]	S-1I2WG9	Standard	Direct Linear Ambient Luminaires	1	15	27/30/35K	15	2093
	RP-LBI-G1-4F-25W-XXX-[WC,W]-[HV,Blank]-[Blank,OCN]-[BAA,Blank]-2xYYY	S-86BDPE	Standard	Retrofit Kits for Direct Linear Ambient Luminaires	2	25	35/40/50K	50	6197
	RP-LBI-G1-4F-25W-XXX-[WC,W]-[HV,Blank]-[Blank,OCN]-[BAA,Blank]-3xYYY	S-A3LPKC	Standard	Retrofit Kits for Direct Linear Ambient Luminaires	3	25	35/40/50K	75	9292
RP-LBI-G1-4F-25W-XXX-[WC,W]-[HV,Blank]-[Blank,OCN]-[Blank,BAA]	S-41DOBN	Standard	Direct Linear Ambient Luminaires	1	25	35/40/50K	25	3166	
RP-LBI-G1-4F-25W-XXX-[WC2,W]-[HV,Blank]-[Blank,OCN]-[BAA,Blank]-2xYYY	S-AIYC2J	Standard	Retrofit Kits for Direct Linear Ambient Luminaires	2	25	27/30/35K	50	5988	
RP-LBI-G1-4F-25W-XXX-[WC2,W]-[HV,Blank]-[Blank,OCN]-[BAA,Blank]-3xYYY	S-6TPCOV	Standard	Retrofit Kits for Direct Linear Ambient Luminaires	3	25	27/30/35K	75	9046	
RP-LBI-G1-4F-25W-XXX-[WC2,W]-[HV,Blank]-[Blank,OCN]-[Blank,BAA]	S-PACK0N	Standard	Direct Linear Ambient Luminaires	1	25	27/30/35K	25	2989	

## LOW-BAY

	PART #	DLC CODE	STANDARD/ PREMIUM	PRIMARY USE	# OF BARS	WATTAGE PER BAR	COLOR TEMP	TOTAL WATTAGE	TOTAL LUMENS
4FT	RP-LBI-G1-4F-10W-XXX-[WC,W]-[HV,Blank]-[Blank,OCN]-[BAA,Blank]-2xYYY	S-1QKFA4	Standard	Low-Bay Luminaires for Commercial and Industrial Buildings	2	10	35/40/50K	20	2524
	RP-LBI-G1-4F-10W-XXX-[WC2,W]-[HV,Blank]-[Blank,OCN]-[BAA,Blank]-2xYYY	S-UYKDG	Standard	Low-Bay Luminaires for Commercial and Industrial Buildings	2	10	27/30/35K	20	2517
	RP-LBI-G1-4F-15W-XXX-[WC,W]-[HV,Blank]-[Blank,OCN]-[BAA,Blank]-2xYYY	S-T0UZXD	Standard	Low-Bay Luminaires for Commercial and Industrial Buildings	2	15	35/40/50K	30	3758
	RP-LBI-G1-4F-15W-XXX-[WC2,W]-[HV,Blank]-[Blank,OCN]-[BAA,Blank]-2xYYY	S-VXSNZ8	Standard	Low-Bay Luminaires for Commercial and Industrial Buildings	2	15	27/30/35K	30	3657
	RP-LBI-G1-4F-25W-XXX-[WC,W]-[HV,Blank]-[Blank,OCN]-[BAA,Blank]-2xYYY	S-94HDWX	Standard	Low-Bay Luminaires for Commercial and Industrial Buildings	2	25	35/40/50K	50	6216
	RP-LBI-G1-4F-25W-XXX-[WC2,W]-[HV,Blank]-[Blank,OCN]-[BAA,Blank]-2xYYY	S-XDOL53	Standard	Low-Bay Luminaires for Commercial and Industrial Buildings	2	25	27/30/35K	50	6005



## HIGH-BAY

4FT

PART #	DLC CODE	STANDARD/ PREMIUM	PRIMARY USE	# OF BARS	WATTAGE PER BAR	COLOR TEMP	TOTAL WATTAGE	TOTAL LUMENS
RP-LBI-G1-4F-10W-XXK-[WC,W]-[HV,Blank]-[Blank,OCN]-[BAA,Blank]-3xYYY	S-ESCAJ9	Standard	High-Bay Luminaires for Commercial and Industrial Buildings	3	10	35/40/50K	30	3770
RP-LBI-G1-4F-10W-XXK-[WC2,W]-[HV,Blank]-[Blank,OCN]-[BAA,Blank]-3xYYY	S-ISYDE5	Standard	High-Bay Luminaires for Commercial and Industrial Buildings	3	10	27/30/35K	30	3673
RP-LBI-G1-4F-15W-XXK-[WC,W]-[HV,Blank]-[Blank,OCN]-[BAA,Blank]-3xYYY	S-I9MO37	Standard	High-Bay Luminaires for Commercial and Industrial Buildings	3	15	35/40/50K	45	5695
RP-LBI-G1-4F-15W-XXK-[WC2,W]-[HV,Blank]-[Blank,OCN]-[BAA,Blank]-3xYYY	S-OCUKAJ	Standard	High-Bay Luminaires for Commercial and Industrial Buildings	3	15	27/30/35K	45	5660
RP-LBI-G1-4F-25W-XXK-[WC,W]-[HV,Blank]-[Blank,OCN]-[BAA,Blank]-3xYYY	S-8XVKZO	Standard	High-Bay Luminaires for Commercial and Industrial Buildings	3	25	35/40/50K	75	9300
RP-LBI-G1-4F-25W-XXK-[WC2,W]-[HV,Blank]-[Blank,OCN]-[BAA,Blank]-3xYYY	S-UGMZ8Q	Standard	High-Bay Luminaires for Commercial and Industrial Buildings	3	25	27/30/35K	75	9149

## LOW OUTPUT

2FT

3FT

4FT

PART #	DLC CODE	STANDARD/ PREMIUM	PRIMARY USE	# OF BARS	WATTAGE PER BAR	COLOR TEMP	TOTAL WATTAGE	TOTAL LUMENS
RP-LBI-G1-2F-6W-XXK-[WC,W]-[HV,Blank]-[Blank,OCN]-[Blank,BAA]	S-ZW28LU	Premium	Stairwell and Passageway Luminaires	1	6	35/40/50K	6	706
RP-LBI-G1-2F-9W-XXK-[WC,W]-[HV,Blank]-[Blank,OCN]-[Blank,BAA]	S-9GJMU6	Premium	Stairwell and Passageway Luminaires	1	9	35/40/50K	9	1062
RP-LBI-G1-2F-12W-XXK-[WC,W]-[HV,Blank]-[Blank,OCN]-[Blank,BAA]	S-JZTE4V	Premium	Stairwell and Passageway Luminaires	1	12	35/40/50K	12	1062
RP-LBI-G1-3F-10W-XXK-[WC,W]-[HV,Blank]-[Blank,OCN]-[Blank,BAA]	S-UJEG4S	Premium	Stairwell and Passageway Luminaires	1	10	35/40/50K	10	1335
RP-LBI-G1-3F-10W-XXK-[WC2,W]-[HV,Blank]-[Blank,OCN]-[Blank,BAA]	S-7ZCIT5	Premium	Stairwell and Passageway Luminaires	1	10	27/30/35K	10	1267
RP-LBI-G1-3F-12W-XXK-[WC,W]-[HV,Blank]-[Blank,OCN]-[Blank,BAA]	S-RBOCMU	Premium	Stairwell and Passageway Luminaires	1	12	35/40/50K	12	1648
RP-LBI-G1-3F-12W-XXK-[WC2,W]-[HV,Blank]-[Blank,OCN]-[Blank,BAA]	S-YZBHXC	Premium	Stairwell and Passageway Luminaires	1	12	27/30/35K	12	1554
RP-LBI-G1-3F-15W-XXK-[WC,W]-[HV,Blank]-[Blank,OCN]-[Blank,BAA]	S-KU4BH	Premium	Stairwell and Passageway Luminaires	1	15	35/40/50K	15	1961
RP-LBI-G1-3F-15W-XXK-[WC2,W]-[HV,Blank]-[Blank,OCN]-[Blank,BAA]	S-OYXUA6	Premium	Stairwell and Passageway Luminaires	1	15	27/30/35K	15	1842
RP-LBI-G1-4F-10W-XXK-[WC,W]-[HV,Blank]-[Blank,OCN]-[Blank,BAA]	S-YSKB98	Premium	Stairwell and Passageway Luminaires	1	10	35/40/50K	10	1344
RP-LBI-G1-4F-10W-XXK-[WC2,W]-[HV,Blank]-[Blank,OCN]-[Blank,BAA]	S-ZD1UMN	Premium	Stairwell and Passageway Luminaires	1	10	27/30/35K	10	1198
RP-LBI-G1-4F-15W-XXK-[WC,W]-[HV,Blank]-[Blank,OCN]-[Blank,BAA]	S-HFJ9E4	Premium	Stairwell and Passageway Luminaires	1	15	35/40/50K	15	2255
RP-LBI-G1-4F-15W-XXK-[WC2,W]-[HV,Blank]-[Blank,OCN]-[Blank,BAA]	S-YEJMDB	Premium	Stairwell and Passageway Luminaires	1	15	27/30/35K	15	2093
RP-LBI-G1-4F-25W-XXK-[WC,W]-[HV,Blank]-[Blank,OCN]-[Blank,BAA]	S-S0ODEU	Premium	Stairwell and Passageway Luminaires	1	25	35/40/50K	25	3166
RP-LBI-G1-4F-25W-XXK-[WC2,W]-[HV,Blank]-[Blank,OCN]-[Blank,BAA]	S-VXWUK0	Premium	Stairwell and Passageway Luminaires	1	25	27/30/35K	25	2989

## LINKING QTY

	120V	208V	240V	277V
4FT	33 BARS	40 BARS	40 BARS	40 BARS
3FT	40 BARS	40 BARS	40 BARS	40 BARS
2FT	40 BARS	40 BARS	40 BARS	40 BARS

## LINKING POSSIBILITIES

- ➔ Linking cables will lower connectable quantities.
- ➔ The Linking numbers are based on using the LBI Junction box and connected end to end.
- ➔ Linking does not include 0-10V linked control. This will depend on the controlling device.

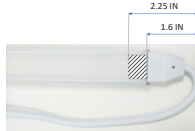
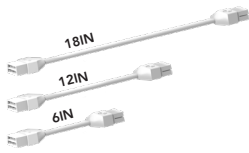
To order for continuous runs, please order "1 Bar Kits" + required accessory connectors (sold separately). Connect up to 40 light bars on one incoming power cable. (Check linking chart for voltage specific linking quantity)

## DEFAULT OCC SENSOR SETTINGS

SENSITIVITY	DAYLIGHT SENSOR	HOLD TIME	TWILIGHT TIME	TWILIGHT LEVEL
100%	DISABLED	5 MIN	+ ∞	30%



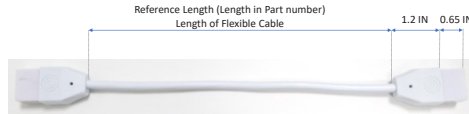
## LINKING CABLES



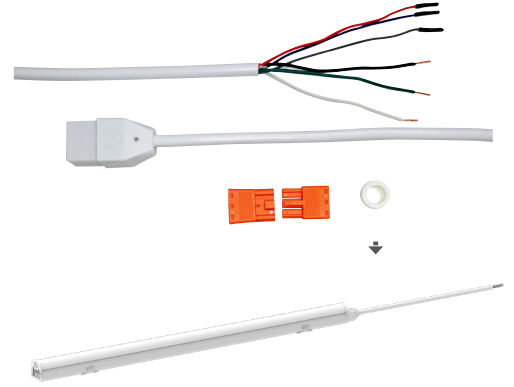
- RP-LBI-LC-6IN-DIM-10P
- RP-LBI-LC-6IN-NODIM-10P
- RP-LBI-LC-12IN-DIM-10P
- RP-LBI-LC-12IN-NODIM-10P
- RP-LBI-LC-18IN-DIM-10P
- RP-LBI-LC-18IN-NODIM-10P

## CABLE DIMENSIONS

7.25mm - 0.28 Inch for DIM cable.  
6.35mm - .25 inch for NO-DIM cables



## INCOMING POWER KIT: RP-LBI-G1-IP-3F-DIM



## DIM



## SEAMLESS CONNECTOR

- RP-LBI-SSC-DIM-10P
- RP-LBI-SSC-NODIM-10P

## NO-DIM



## LINKING CABLES & SEAMLESS CONNECTORS

Use Linking Cables and Seamless Connectors to easily connect the power and control wires from one light bar to another. The ...-DIM version of the linking cables and seamless connector link all connections (AC power; 12V Aux power; 0-10V DIM signal) from light bar to light bar. Use these items to control all light bars from one sensor or incoming cable connection. The ...-NODIM version of these items only links the AC power. Use these items to AC power all light bars with a single power feed; but separate control signals into individual groups.

## 4.7IN SPACER CONNECTOR | RP-LBI-SRC-4.7IN (SINGLE PACK)

Use the 4.7in Spacer Connector to bring the length of the bar system to a standard dimension (24in, 36in, 48in). This is useful when retrofitting linear fixtures of a standard length. It allows for the bar to be centered on each standard-length fixture. Each 4.7in spacer connector comes with (2) Seamless Connector-DIM.

**\*Note: spacer does not emit light**

## SENSOR KITS | RP-LBI-OC2-A (STANDARD RANGE - SINGLE PACK) RP-LBI-OC3-A\_LR (LIMITED RANGE - SINGLE PACK)

Sensors kits for LBI are Tri-Level, remote controllable high frequency radar sensor designed to easily integrate with the LBI bars. It is totally plug&play! It can dim the light bars down to conserve more energy from both motion and daylight. The sensor controls the 0-10V DIM signal in both directions from the Sensor unit. Each sensor kit comes with (1) sensor (4.7 inch); (1) surface mount magnetic clip; (2) Seamless Connector-DIM; (1) 12" Linking Cable-DIM. See **RP-LBI-OC2-A/OC3-A** data sheet for more details.

## SURFACE MOUNT MAGNETIC CLIP | RP-LBI-SMM-10P (10 PACK ONLY)

The Surface Mount Magnetic Clip provides the most universal method for attaching the light bar to a wall, ceiling, or fixture to be retrofitted. The mounting tabs that extend perpendicularly from the light bar can be easily removed by bending and breaking on the pre-scored line. The strong rare-earth magnets are intended to hold light bars in place while installing mechanical fasteners. Not intended for permanent installation with magnets only.

*Two of these clips are included in each light bar kit.*

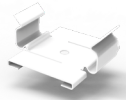
## SUSPENDED IN-LINE KIT | RP-LBI-SIL-KIT-10P (10 PACK ONLY)

The Suspended In-Line Kit includes everything needed to suspend LBI from the ceiling.

**The complete kit includes:** Suspended In-Line Bracket, Aircraft Cable (9.8ft), Adjustable cable gripper, and a ceiling anchor.

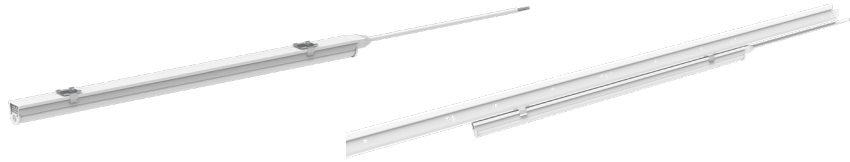
## SUSPENDED IN-LINE BRACKET (\*BRACKET ONLY\*) | RP-LBI-SIL-BRACKET-10P (10 PACK ONLY)

The Suspended In-Line Bracket (bracket only) is a wide clip that fastens over the junction between 2 LBI light bars to keep them straight in-line and provides mounting points for common suspension methods (air craft cable, drop chain, etc.) This part number is for the bracket only.



**T-BAR CLIPS** | **RP-LBI-T1516-10P** (PARALLEL – DIRECTLY UNDER THE T-BAR – 10 PACK)  
**RP-LBI-T1516-90-10P** (PERPENDICULAR – ACROSS THE BAR – 10 PACK)

The T-Bar Clips is the fastest way to mount a light bar to a T-Bar grid ceiling. Works with standard 15/16" grid only.



**BLADE CLIP** | **RP-LBI-BLC-10P** (10 PACK ONLY)

The Blade Clip is designed to provide a retrofit solution for fixtures that have thin sheet metal or plastic film reflectors commonly found on high bay fixtures. The rotating mounting blade provides a degree of freedom to align the mounting holes on the blade with fastening locations that may not be in-line with the light bar or where the distance between available mounting points is greater than the length of the light bar. It is common to attach the blade to the same point holding the thin reflector to the fixture frame.



**UP DOWN CLIP** | **RP-LBI-UDC-10P** (10 PACK ONLY)

Use the Up/Down clip with our suspended in-line kit to clip a shorter bar to provide up-light. For example if suspending a 4ft, use the 3ft OR 2ft as the up-light, (so there is room for the suspension-kit connection). The RP-LBI-SIL-KIT comes with wire clips to hold linking power cable for UP bars in-line and neat. (linking cable not included)



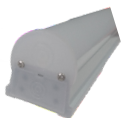
**LBI JUNCTION BOX** | **RP-LBI-JBOX-1.5X4**

The LBI junction box is used to connect LBI wiring to branch circuits. Connections are made from the LBI Junction box to the Light Bar using seamless connector or linking cable. The internal wiring (except optional switch) are rated to 600V (for 347V operation) For undercabinet or task lighting, the junction box includes an optional 120V ON/OFF switch that can be installed into a rectangular knock-out on the cover. Kit includes 1pc RP-LBI-SSC-DIM.



**12FT 90-DEGREE INCOMING POWER CABLE** | **RP-LBI-G1-IP-90DEG-12F-DIM**

Use the 90 degree Incoming Power Cable for an easy and clean connection to suspended LBI fixtures.



**OUTPUT CAP** | **RP-LBI-G2-OUTPUT-CAP-10P**

Male power and control termination plug for the LBI linking connector 10 pack.



**45 DEGREE BRACKET** | **RP-LBI-45DEG**

45 degree bracket for cove lighting or displays. Works with included LBI mounting clips.

