

plano **ARCH**

LCDL | Solstice

Product Data Sheet



COMMERCIAL-GRADE

LED Commercial Downlight



4" | 6" | 8" | 10"

Product Overview

The planoARCH LCDL Solstice series luminaire is the latest in high-performance commercial LED downlight technology. Engineered for superior performance in an easy fit installation package, the LCDL Solstice delivers high-quality lighting your projects deserve.

With a rated life of 50,000 hours, the LCDL Solstice is built to last. It's a reliable and cost-effective solution for a wide range of applications.

The LCDL Solstice is available in four sizes: 4", 6", 8", and 10" — making it ideal for commercial spaces, hospitality, healthcare industry, schools, shopping centers, industrial areas, and hotels.

ARCHIPELAGO luminaires and LED components have been tested by independent laboratory in accordance to IESNA LM79 and LM80. LED color temperature is warrantied to shift no more than 180K over the standard warranty period. Furthermore, the range of Correlated Color Temperature follows the guidelines of the American National Standard for Specifications for the Chromaticity of Solid State Lighting (SSL) Products, ANSI C78.377-2017.

Product Warranty*



5-Year Warranty



50,000 Hrs

* Standard warranty. Extended warranty available.

Applications



Warehouse



Manufacturing



Industrial






Retail

Main Features

- High luminous efficacy, up to 110LM/W
- High-quality aluminum shell with frosted PC diffuser
- Color removable trim available (sold separately): brushed nickel, black & bronze
- Easy fit installation, spring-action housing clips.
- Supports tri-mode dimmability in TRIAC, ELV and 0-10V dimming
- Suitable for use in -4°F to 113°F
- Suitable for use in wet locations



Highlights

| Features | Description |
|----------------------|---|
| 3-WATTselect |  Wattage selectable: 3-way dip-switch |
| 5-CCTselect |  CCT selectable: 5-way dip-switch |
| Tri-Mode Dimmability |  Supports dimming in TRIAC, ELV, and 0-10V |
| High Performance |  Up to 52W |
| Limited Warranty |  5-Year Warranty |

NOW WITH 21" WHIP



Project Details

Project Name:

Fixture Schedule:

Project Number:

Notes:

Key Specifications

- **Dimming:** Tri-Mode Dimmability in TRIAC, ELV, and 0-10V
- **Efficacy:** up to 110lm/W
- **Input Voltage:** 120-277V
- **Rating:** Suitable for Wet Location
- **Power Factor (PF):** >0.9 Non-Flicker
- **Beam Angle:** 100°
- **CCT:** 2700K, 3000K, 3500K, 4000K, 5000K
- **Color Rendering Index (CRI):** 90
- **Housing:** Aluminum housing with frosted PC diffuser

Certifications



Model Specifications

| Model | 3-WATTselect (W) | Lumen (lm) | Efficacy (lm/W) | 5-CCTselect (K) | Voltage (V) | CRI | Equiv. (CFL) | Energy Saved (%) |
|--------|------------------|------------|-----------------|---|-------------|-----|--------------|------------------|
| LCDL4 | 6W | 600lm | 100lm/W | 2700K 3000K 3500K 4000K 5000K | 120-277V | 90 | 8W | 33.3% |
| | 9W | 898lm | 100lm/W | | | | 14W | 55.6% |
| | 12W | 1,198lm | 100lm/W | | | | 14W | 25.0% |
| LCDL6 | 12W | 1,200lm | 100lm/W | | | | 14W | 25.0% |
| | 17W | 1,836lm | 108lm/W | | | | 23W | 35.3% |
| | 22W | 2,200lm | 100lm/W | | | | 27W | 18.4% |
| LCDL8 | 17W | 1,870lm | 110lm/W | | | | 23W | 35.3% |
| | 24W | 2,640lm | 110lm/W | | | | 27W | 12.5% |
| | 30W | 3,300lm | 110lm/W | | | | 2 X 23W | 53.3% |
| LCDL8 | 32W | 3,520lm | 110lm/W | | | | 2 X 23W | 43.8% |
| | 42W | 4,452lm | 106lm/W | 2 X 27W | 28.6% | | | |
| | 52W | 5,200lm | 100lm/W | 2 X 27W | 3.8% | | | |
| LCDL10 | 22W | 2,354lm | 107lm/W | 27W | 22.7% | | | |
| | 30W | 3,150lm | 105lm/W | 2 X 17W | 13.3% | | | |
| | 38W | 3,876lm | 102lm/W | 2 X 23W | 21.1% | | | |



Ordering Guide

| Model Series | Size (in) | 3-WATTselect (W) | 5-CCTselect | EM Driver |
|-------------------------------|--|--|--|--|
| LCDL Commercial Downlights | 4 4in 6 6in 8 8in 10 10in | (4in) -0612 6W/9W/12W (6in) -1222 12W/17W/22W (8in) -1730 17W/24W/30W (8in) -3252 32W/42W/52W (10in) -2238 22W/30W/38W | CS CCTselect: 2700K / 3000K / 3500K / 4000K / 5000K / | /EM15 EM15-HMB/170 /EM08 EM08-HMB/170DC |

Note: Default settings are displayed in GRAY. Spec selections and optional accessories are displayed in RED.

Ordering number example:

LCD10-2238CS

Please place dashes (-) in correct order.

Choose your model specifications:

| | | | | |
|--------------|------|-------|-----------|-----------|
| LCDL | 10 | -2238 | CS | EM15 |
| Model Series | Size | Watt | CCTselect | EM Driver |

Quick Install Sizing Details

| Size | Hole Size |
|------|---------------|
| 4" | 4.33" (110mm) |
| 6" | 6.30" (160mm) |
| 8" | 8.07" (205mm) |
| 10" | 8.98" (228mm) |

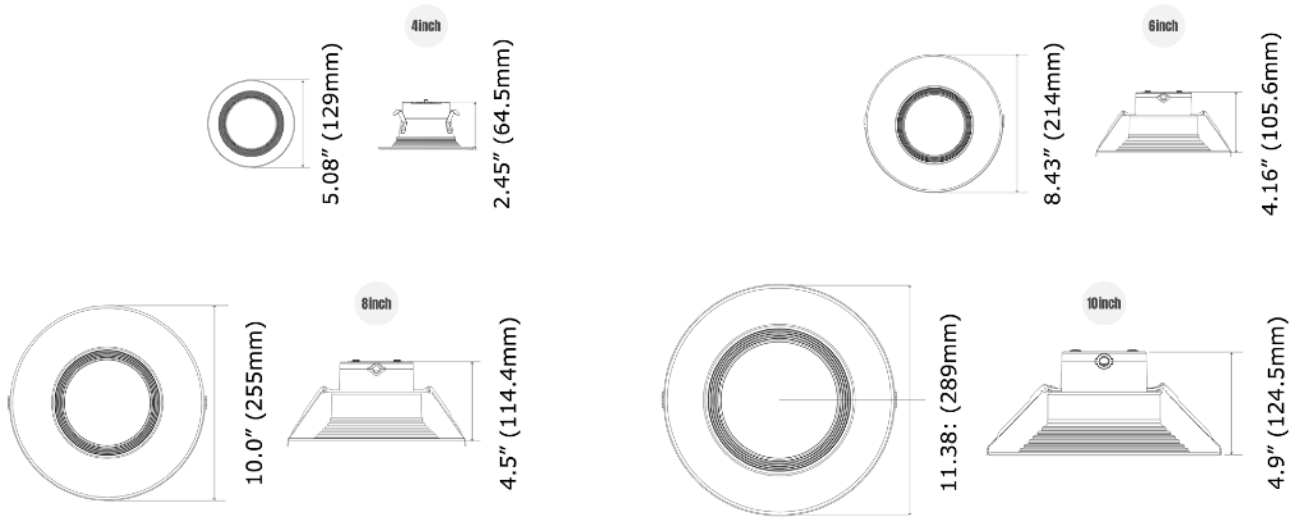
Compatible 0-10V Dimmers

| Recommended Dimmer | |
|--------------------|-----------|
| Lutron | Legrand |
| RMJS-8T-DV-B | RH4FBL3PW |
| Diva DVSTV | |
| MS-Z101-WH | |

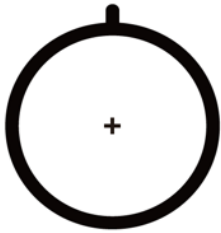
Compatible TRIAC/ELV Dimmers

| Recommended Dimmer | |
|--------------------|--------------|
| LEVITON | LUTRON |
| ROO-RNL06-TW | CT-600PR |
| R50-IPL06-10M | MSCL-OP153MH |
| | DVWCL-153PH |
| | TGCL-153PR |
| | MA-RR |
| | DVCL-153PR |
| | SCL-153PR |
| | P-PKG1W-WH-R |
| | MACL-153MH |

Dimensions



Accessories (Standard)

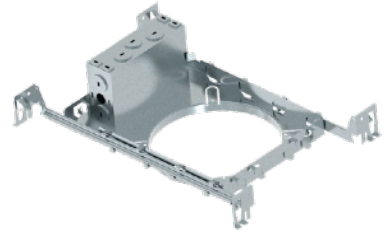


Hole Cutout Card



Wire Nuts

Accessories (Optional)



New Construction Plate

LCDL-SE/NCP

Junction Box

LCDL-SE/JCB

Trim Ring Replacement (Optional and Sold Separately)



Brushed Nickel



Black



Bronze

| Size | Brushed Nickel | Black | Bronze |
|------|----------------|--------------|--------------|
| 4" | LCDL4-SE/BN | LCDL4-SE/BK | LCDL4-SE/BR |
| 6" | LCDL6-SE/BN | LCDL6-SE/BK | LCDL6-SE/BR |
| 8" | LCDL8-SE/BN | LCDL8-SE/BK | LCDL8-SE/BR |
| 10" | LCDL10-SE/BN | LCDL10-SE/BK | LCDL10-SE/BR |