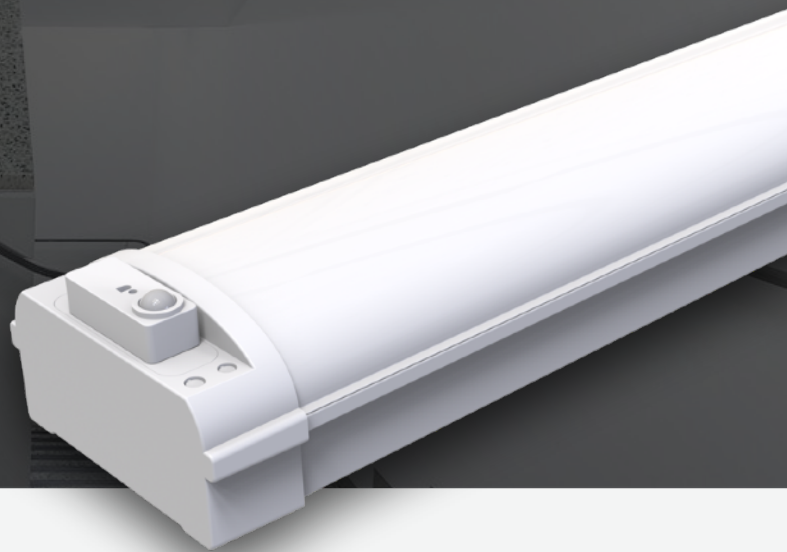


plano **ARCH**

LWRL | Waymark

Product Data Sheet



COMMERCIAL-GRADE

Linear Stairwell/Wraparound

2FT | 4FT



Product Overview

The LWRL Waymark-series linear luminaire is a sleek, modern fixture that is perfect for any stairwell or wraparound application.

Featuring seamless light distribution that is superior to competing stamped metal luminaire, the Waymark perfectly lends its clean aesthetic to offices, retail spaces, supermarkets, stairwells and other general commercial lighting applications.

Engineered for easy to install and maintain. It comes with all the necessary hardware and instructions, and it can be installed in minutes. The fixture is also shatter-resistant, so you can be sure that it will last for years to come.

ARCHIPELAGO luminaires and LED components has been tested by independent laboratory in accordance to IESNA LM79 and LM80. LED color temperature is warrantied to shift no more than 180K over the standard warranty period. Furthermore, the range of Correlated Color Temperature follows the guidelines of the American National Standard for Specifications for the Chromaticity of Solid State Lighting (SSL) Products, ANSI C78.377-2017.

Product Warranty*



7-Year Warranty



75,000 Hrs

* Standard warranty. Extended warranty available.

Applications



Office Space



School



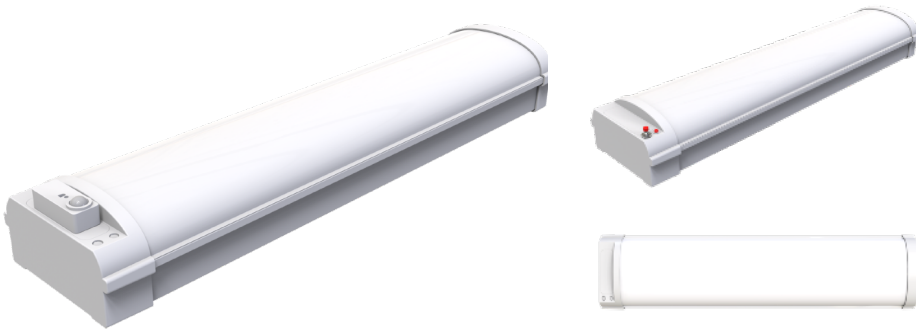
Parking
Garages



Stairways

Main Features

- **Steel Housing With Heat-Resistant Frosted Lens** For Long-Lasting Performance In Demanding Environments.
- Choose From 4-Way Selectable Wattages And 0-10V Dimmability To Create The Perfect Lighting Atmosphere For Any Space.
- Available In 4-Way Selectable CCT Through Driver-Based Dip-Switches To Match Lighting To The Space.
- Easy Installation With Standard Lay-In Or Surface Mount Options.
- Architectural Design Is Suitable For Any Office Or Commercial Spaces.
- Microchip Programmed Light-Engine For Consistent Color Temperature.
- Dual-Listed in Both Stairwell & Linear Ambient DLC Categories
- ETL Damp Location Listed For Use In Damp Locations.
- High-Density LED Chips For Uniform Light Output.
- Backed By A 7-Year, 75,000 Hour Warranty.



Project Details






Project Name:

Fixture Schedule:

Project Number:

Notes:

Highlights

Features	Description
4-WATTselect	 Wattage selectable: 4-way dip-switch
4-CCTselect	 CCT selectable: 4-way dip-switch
Sensor Ready	 Plug-n-Play, Built-In Single-Pin Bi-Level Occupancy Sensor Port
EM Driver Ready	 Optional EM Driver is Designed for Quick Install, Quick Delivery
Limited Warranty	 7-Year Warranty











Key Specifications

- **Dimming Status:** Continuous Dimming <10%
- **Housing:** Cold-Rolled Steel
- **Operating Temp:** 32°F — 104°F
- **IP:** IP20 Indoor Damp Location
- **Input Voltage:** 120-277V
- **PF:** > 0.9 Non-Flicker
- **Efficacy:** 125LM/W
- **Dimming:** 0-10V
- **THD:** <15%

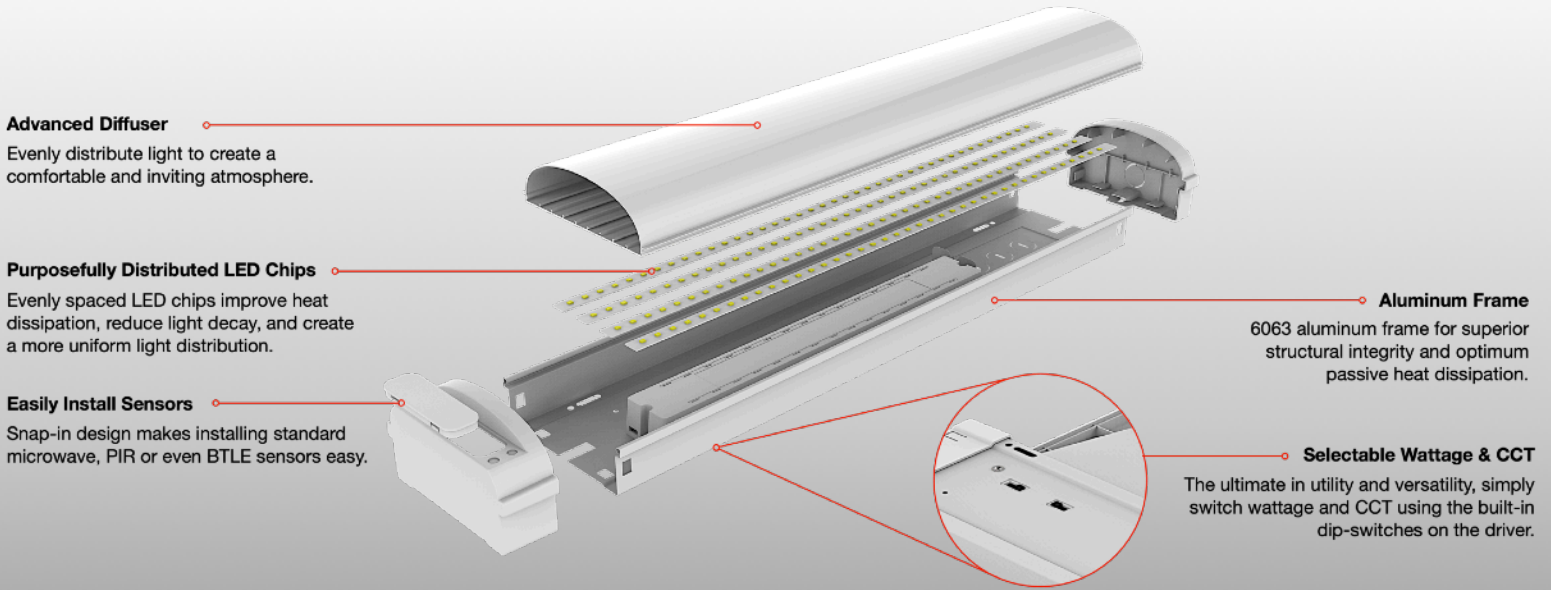
Certifications



Model Specifications

Model Series	Length	4-WATTselect	4-CCTselect	Max Lumen	LPW
LWRL2	2FT	20W  25W  30W  35W 	3000K  3500K  4000K  5000K 	4375lm	125lm/W
LWRL4	4FT	35W  40W  45W  50W 	3000K  3500K  4000K  5000K 	6750lm	135lm/W

1. Measured at 4000K



Ordering Guide

Model Series	Length	WATTselect (W)	CCTselect (K)
LWRL Linear Stairwell/Wraparound	2 2FT	-2035: 20W / 25W / 30W / 35W	CS CCTselect: 3000K / 3500K / 4000K / 5000K /
	4 4FT	-3550: 35W / 40W / 45W / 50W	

Note: Default settings are displayed in **GRAY**. Spec selections and optional accessories are displayed in **RED**.

Optional Accessories

(1) EM Driver	(2) Sensors
/EM08 EM08-MT/150	/BLS Bi-Level Sensor (MSP-HTi/08P1/BLS) /NLC NLC Compliant (MSP-HTi/08P1/NLC)

Ordering number example:

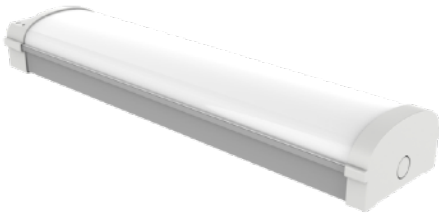
LWRL2-2035CS/EM08/BLS

Please place dashes (-) in correct order.

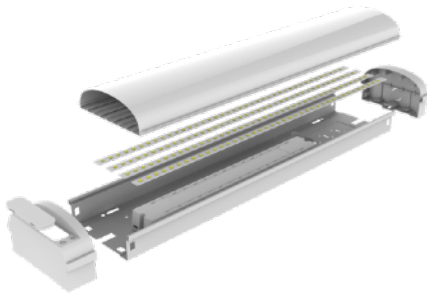
Choose your model specifications:

LWRL	2	-2035	CS	/EM08	/BLS
Model Series	Length	WATTselect	CCTselect	EM	Sensor

Versatile Design



Backside



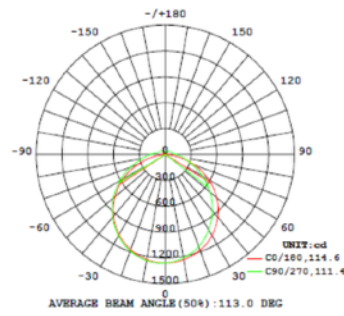
Wattage & CCT selectable



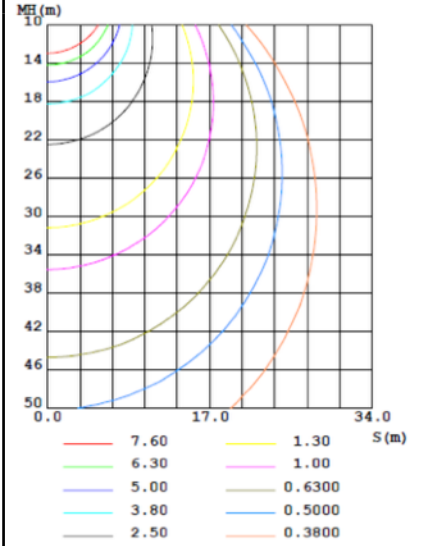
Prismatic lens design

Photometric

LUMINOUS INTENSITY DISTRIBUTION DIAGRAM



C0 PLANE ISOLUX DIAGRAM (UNIT: lx)



blueARCH enBLED



SIG-qualified Bluetooth Mesh lighting control solution. Technology by SILVAIR.





Sizing & Measurements

Model Series	Width (in)	Length (in)	Depth (in)	Weight (lb)	Dimensions
LWRL2-2035CS	5.12	21.54	2.76	1.76	
LWRL4-3550CS	5.12	45.55	2.76	3.19	

DLC Model Guide

Product ID	Model No.	Category	Classification	Watt	Lumen	Efficacy	CCT	CRI	Integral Control
S-T5FBEA	LWRL2-2035CS	Stairwell and Passageway Luminaires	Premium	35W Max	4071lm	121lm/W	3000K	80	Yes
S-UDCY4K	LWRL2-2035CS	Linear Ambient Luminaires: Direct	Premium	35W Max	4071lm	121lm/W	3000K	80	Yes
S-NM4POF	LWRL4-3550CS	Stairwell and Passageway Luminaires	Premium	50W Max	6419lm	134lm/W	3000K	80	Yes
S-QJY9W8	LWRL4-3550CS	Linear Ambient Luminaires: Direct	Premium	50W Max	6419lm	134lm/W	3000K	80	Yes

Compatible Accessories

Category	Model No.	Sub-Assembly & Compatible Controllers
EM Driver	 EM08-MT/150	
Sensor / NLC Compliant	 MSP-HTI/08P1/NLC	blueARCH™ Controls <i>Technology by</i> SILVAIR 
Sensor / Bi-Level Sensor	 MSP-HTI/08P1/BLS	RM-HT/06S Controller 