

lampar **ARCH**

LLSN | Vanguard

Product Data Sheet



COMMERCIAL-GRADE

LED Industrial Strips | PRO-tier

2FT | 4FT | 8FT



Product Overview

The LLSN Vanguard-Series is designed with beauty and brains. Fit it with the dome lens for industrial low-bay applications or pair it with quadrilateral lens for proprietary optics that deliver maximum lumens and conceals the LED light source for architectural linear applications.

Designed with 3-way switchable power and 3-way CCT using dip-switches to choose between 9-variations for use in offices, schools, hospitalities and other indoor spaces.

Featuring seamless light distribution with prismatic acrylic lens that is superior to competing strip fixtures, the LLSN-series is a time-saving and cost-effective alternative to full fixture replacement.

ARCHIPELAGO luminaires and LED components has been tested by independent laboratory in accordance to IESNA LM79 and LM80. LED color temperature is warrantied to shift no more than 180K over the standard warranty period. Furthermore, the range of Correlated Color Temperature follows the guidelines of the American National Standard for Specifications for the Chromaticity of Solid State Lighting (SSL) Products, ANSI C78.377-2017.

Product Warranty*



7-Year Warranty



75,000 Hrs

* Standard warranty. Extended warranty available.

Applications



Office Space



School



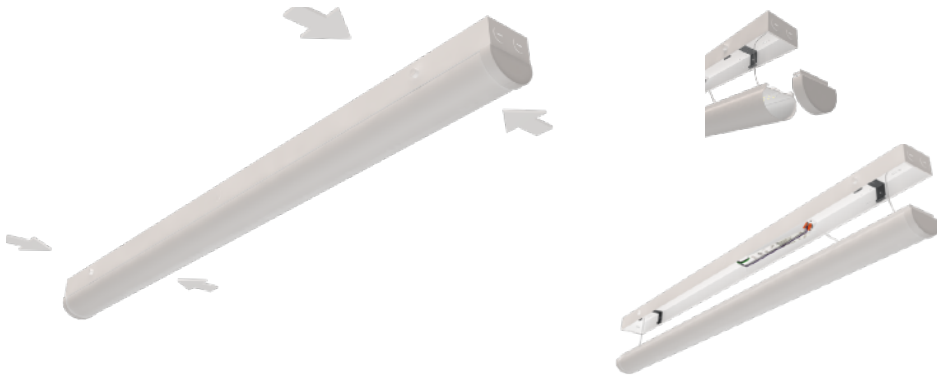
Hospitals



Commercial Buildings

Main Features

- All-in-One Lighting Solution for Linear Strip
- Industry's Fastest Strip Installation in Minutes
- Steel Housing and Equipped w/ Heat Resistant Frosted Lens
- Universal Fit to Standard 4.25"/5.25" T8/T12 Fluorescent Strips
- Traditional Design is Suitable for Small Space Such as Stairwell
- Selectable Wattage and CCT Through Driver-Based Dip-Switches
- Easy Installation w/ Lay-In Ready and Built-In Seismic Hooks
- Microchip Programed Light-Engine for Consistent CCT
- High Performance and Built-In Sensor Ready Options Available
- High-Density LED Chips for Uniform Light Output
- 7-Year, 75,000Hr Warranty
- UL Damp Location Listed
- DLC Standard Listed



Project Details






Project Name:

Fixture Schedule:

Project Number:

Notes:

Highlights

Features	Description	
3-WATTselect		Wattage selectable: 3-way dip-switch
3-CCTselect		CCT selectable: 3-way dip-switch
blueARCH™ Controls		SIG-qualified Bluetooth Mesh lighting control solution. Technology by Silvair.
High Performance		Up to 400W, replacing up to 2,000W MH
Standard Extended Warranty		Up to 7-Year, 75,000 Hrs

Key Specifications

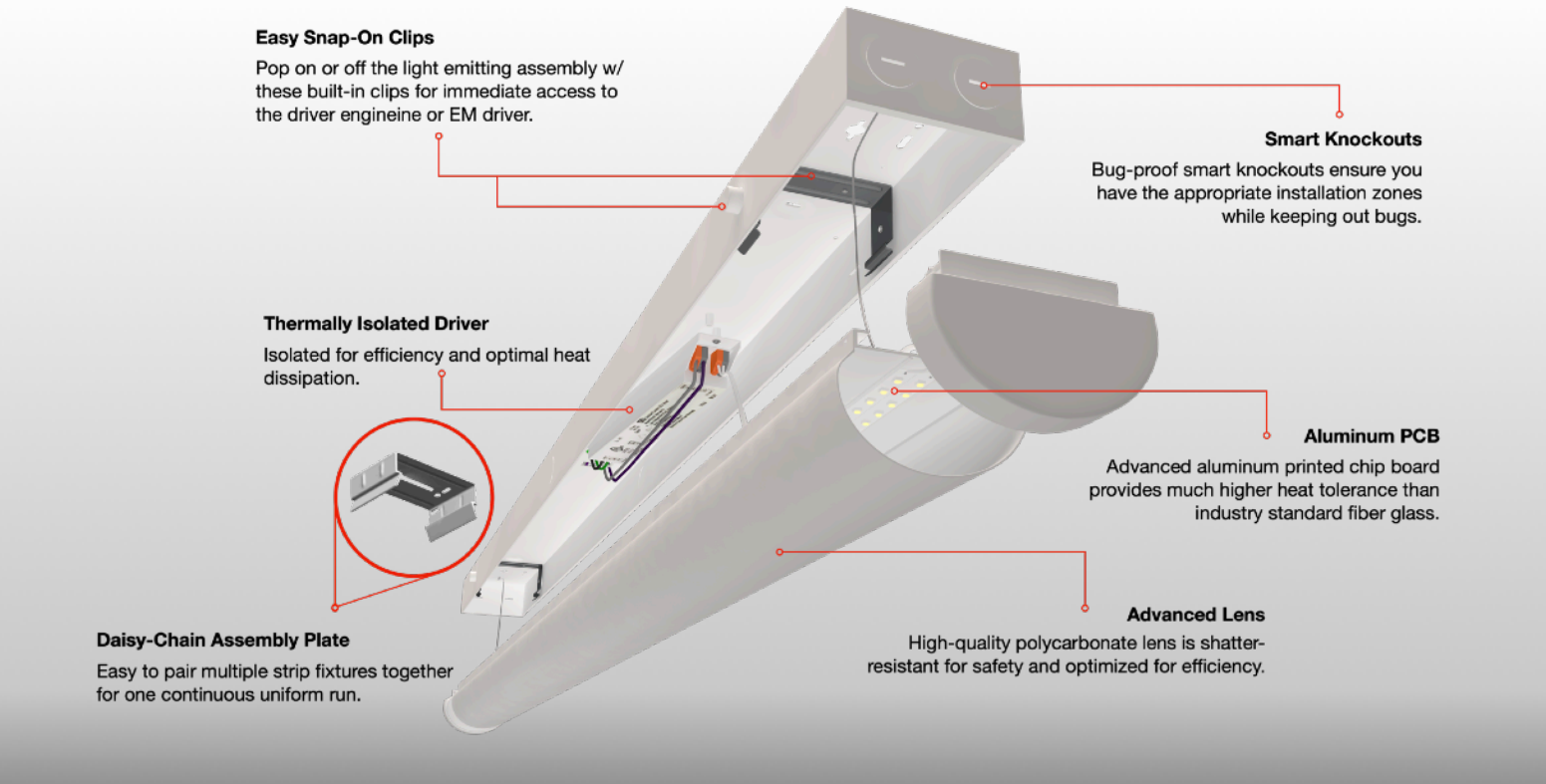
- **LED Chip:** Seoul 3528, LM80, IP-Protected
- **Lightweight Frame:** 6063 Aluminum
- **Operating Temp:** -4°F — 122°F
- **IP:** IP40 Indoor Damp Location
- **Input Voltage:** 120-277V
- **PF:** >0.9 Non-Flicker
- **Efficacy:** 130LM/W
- **Dimming:** 0-10V
- **THD:** <15%
- **CRI:** >80

Certifications



Model Specifications

Model	Length (FT)	WATTselect (W)	Lumens (LM)	Voltage (V)	CCTselect
LLSN-2FT	2FT	10W / 15W / 24W /	1,300LM / 1,950LM / 3,120LM /	120-277V	3500K / 4000K / 5000K /
LLSN-4FT	4FT	24W / 32W / 40W /	3,120LM / 4,160LM / 5,200LM /		
LLSN-8FT	8FT	40W / 52W / 64W /	5,200LM / 6,760LM / 8,320LM /		
		64W / 75W / 90W /	8,320LM / 9,750LM / 11,700LM /		



Ordering Guide

Model Series	WATTselect (W)	CCTselect (K)	Length (FT)	Performance
LLSN LED Linear Strip	3W 10W / 15W / 24W	-xx CCTselect: 3500K 4000K 5000K	-2S3 2FT	-H High Efficacy -H2 Built-In Sensor Ready
	3W 24W / 32W / 40W		-4S3 4FT	
	3W 40W / 52W / 64W		-8S3 8FT	
	3W 64W / 75W / 90W	-HM High Performance Max		

Optional Accessories

(1) Blank	(2) EM Driver	(3) Sensors	(4) Daisy Chain	(5) Mounts
None	/EM08 EM08-CMB/48 /EM08 EM08-CMB/150	/MSM MSM/HTI/126P1/NLC /MSM MSM/HTI/126P1/BLS	/Vplate V/Plate	/VJBP V/JBP

Ordering number example:

LLSN3W-xx-4S3-H2/EM08

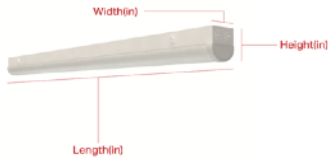
Please place dashes (-) in correct order.

Choose your model specifications:

LLSN			S3	H	
------	--	--	----	---	--

Model Series Watt Length CCTselect Performance Option

Sizing & Measurements



Model Series	Length (in)	Width	Height (in)	Weight (lb)
LLSN-2FT	23.97	2.95	3.26	2.40
LLSN-4FT	48.03	2.95	3.26	3.75
LLSN-8FT	95.98	2.95	3.26	7.2

DLC Model Guide

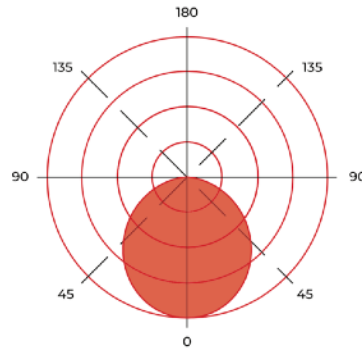
Product ID	Length	DLC	Watt	Lumen	Efficacy	THD	PF	CCT	CRI	Voltage
S-SIPQA3	2FT	Standard	20	2,695	132.1	13.7	0.9	3500	82	120 - 277Vac
S-TP20L3	4FT	Premium	40	5,421	134.1	10.1	0.9	3500	82	120 - 277Vac
S-1CMLRV	8FT	Premium	64	8,548	134.4	11.4	0.9	3500	82	120 - 277Vac

Upgrade, Easily

Photometric



Suspension Mount

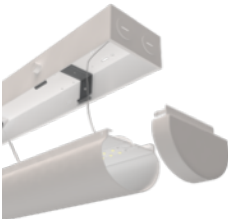


General
 Beam Angle: 90°
 Spacing Criterion: 1.10

blueARCH → enABLED













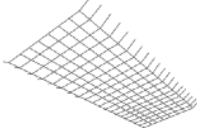
Surface Mount



Daisy-Chained



Compatible Accessories

Category	Model No.			Sub-Assembly & Compatible Controllers
480V Stepdown Transformer		SDT-HTO/325		
EM Driver		EM08-CMB/48 <i>2FT, 4FT Compliant</i>	EM08-CMB/150 <i>8FT Compliant</i>	
Mount / J-Box Plate		LLSN-V/JBP		
Mount / Daisy-Connect Plate		LLSN-V/Plate		
Sensor / NLC Compliant Sensor		MSM/HTI/126P1/NLC		blueARCH™ Controls Technology by SILVAIR 
Sensor / Bi-Level Sensor		MSM/HTI/126P1/BLS		RM-HT/06S Controller 
Wire / Cord Extended Length / 6FT		91603 92056 92065		
Wire / Electrical Whip				
Wire / Plug / NEMA L7-15P				
Wire Guard		LLSN-V/WG2	LLSN-V/WG4	LLSN-V/WG8