

REFINE
SERIES



Setting New Standards in Versatility and Performance



GREENCREATIVE

Setting New Standards in Versatility and Performance

The updated REFINE PAR family provides one-stop solution with most extensive range of over 100 SKUs and specification grade lighting performance.

Proprietary REFINE Lenses

GREEN CREATIVE's proprietary REFINE lens efficiently delivers powerful light with intense center beam candle power and even light distribution, while eliminating uncomfortable glare.

REFINE
SERIES

Fresnel Technology

- Features Fresnel design to refine beam pattern
- Provides even light throughout the distribution with a crisp edge



Focus TIR Lens

- Maximizes delivered center beam candle power
- Increases system efficiency



Faceted Texture

- Minimizes glare
- Maximizes visual comfort

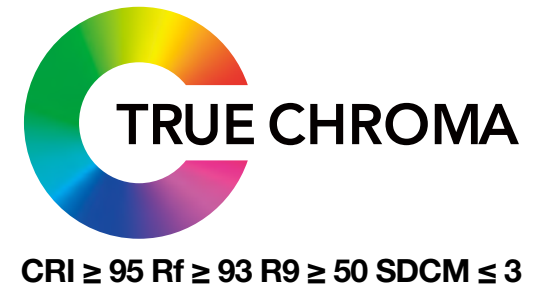




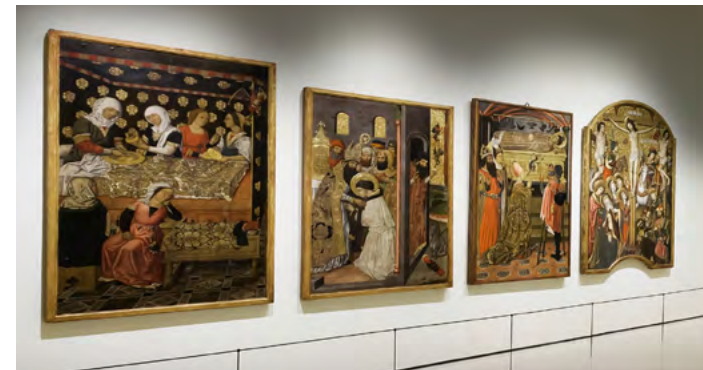
Powered By TRUE CHROMA

REFINE PAR lamps are powered by GREEN CREATIVE's TRUE CHROMA technology, ensuring best in class color rendering, and color consistency, while exceeding the most stringent industry efficiency criteria such as California's Title 20 and Title 24 JA8.

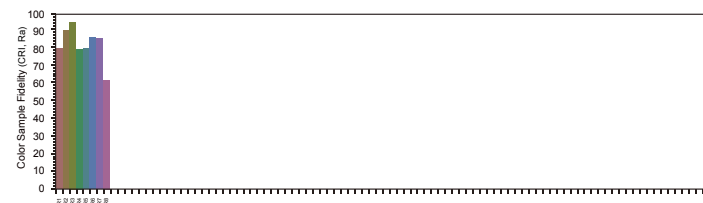
Boasting a CRI ≥ 95 , Rf ≥ 93 , R9 ≥ 50 , and SDCM ≤ 3 , the REFINE PAR series brings out the true colors of objects and spaces, creating captivating environments that leave a lasting impression.



Typical 80 CRI



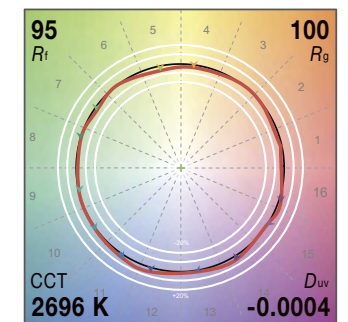
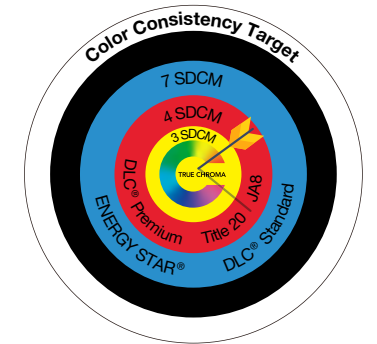
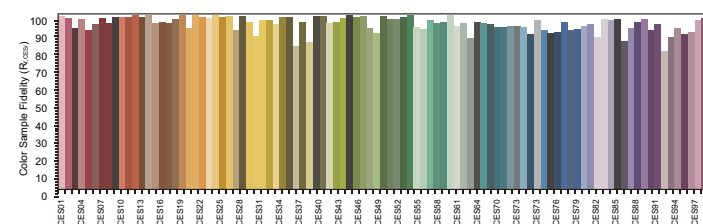
CRI 8 Color Samples



Rf 93



TM-30 99 Color Samples



Guaranteed With Compliances

Lighting professionals can rely on this series of REFINE PAR lamps for exceptional quality and reliability with industry recognized certificates and compliances, including ENERGY STAR, California Title 20, and Title 24 JA8, ensuring the highest energy efficiency, superior light quality and guaranteed safety standards.

Discover a new level of versatility and performance with the REFINE PAR lamps, setting the stage for remarkable lighting experiences in various industries. Architects, specifiers, interior designers, shop owners, stage technicians and other professionals will find REFINE PAR series as the ultimate choice when seeking lighting solutions that transcend boundaries.



Most Extensive PAR Range With Over 100 SKUs

Featured with the patent-pending field interchangeable lenses system design, our updated REFINE PAR family provides one-stop solution for quality PAR lamps with the most extensive range of 102 SKUs, setting new standards in versatility.

The series includes PAR20, PAR30, PAR30 Short Neck, and PAR38 sizes, available in white or black finishes, providing light output from gentle 520 lumens to powerful 1,420 lumens, for replacing 50W-120W halogen lamps. Choose from spot 15°, narrow 25° and flood 40° beam angles for various accent or highlight lighting effects. Use warm 2700K, 3000K and 3500K color temperatures to create relaxing and welcoming atmosphere, or neutral 4000K and cool 5000K color temperatures to create modern and energetic environment. 120V models are dimmable with most existing dimmers for better energy savings, and 120-277V models are also available for commercial lighting applications.

REFINE SERIES		120V								120-277V			
		White				Black				White			
		PAR20	PAR30	PAR30SN	PAR38	PAR20	PAR30	PAR30SN	PAR38	PAR20	PAR30	PAR30SN	PAR38
Beam	CCT												
40°	2700K	√	√	√	√			√		√	√		
	3000K	√	√	√	√	√	√	√	√	√	√	√	√
	3500K	√	√	√	√								
	4000K	√	√	√	√					√	√		√
	5000K	√	√	√	√								
25°	2700K	√	√	√	√			√		√	√		
	3000K	√	√	√	√	√	√	√	√	√	√	√	√
	3500K	√	√	√	√								
	4000K	√	√	√	√					√	√		√
	5000K	√	√	√	√								
15°	2700K	√	√	√	√			√		√	√		
	3000K	√	√	√	√	√	√	√	√	√	√	√	√
	3500K	√	√	√	√								
	4000K	√	√	√	√					√	√		√
	5000K	√	√	√	√								

√ Available as single product



√ Available as sales kit



Note: A sales kit includes one single product in default beam angle plus one additional field interchangeable lens in required beam angle.

Patent Pending Swappable Lens System Design - Allows For Changing Beam Angles In The Field



1. Turn the ring counterclockwise to unlock the ring above the lens



2. Pull out the ring to release the lens



3. Switch the lens and reposition the ring over the newly installed lens



4. Turn the ring clockwise to lock the ring fixing the new lens





GREENCREATIVE

Your Partner for Professional Lighting Solutions

