

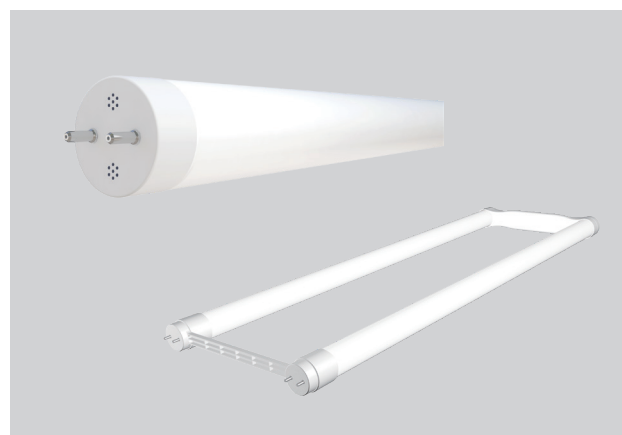


T8 DIR FAMILY

MODEL

Model: 8T8/2F/xxx/DIR/RD
 9.5T8/4F/xxx/HE/DIR
 10T8/3F/xxx/DIR
 11T8/4F/xxx/DIR
 11T8/4F/xxx/DIR/C
 14T8/4F/xxx/DIR
 15T8U6/xxx/DIR

Where xxx means 824-965 which indicates CRI and color temperature



EMERGENCY BALLAST COMPATIBILITY

Model: 8T8/2F/xxx/DIR/RD 9.5T8/4F/xxx/HE/DIR 10T8/3F/xxx/DIR 11T8/4F/xxx/DIR
 11T8/4F/xxx/DIR/C 14T8/4F/xxx/DIR

Brand	Model	Compatibility
Bodine	B50	Compatible
Bodine	ELI-S-20	Compatible
Espen	VEM500DV(L)	Compatible
Espen	VEM1300DV(L)	Compatible
Espen	VEM700DV(L)	Compatible
Exitronix	XEB-7-B-LM	Compatible
Keystone	KT-EMRG-1300-T5	Compatible
Tamlite	BAL1400LPACTD	Compatible

EMERGENCY BALLAST COMPATIBILITY

Model: 15T8U6/xxx/DIR

Brand	Model	Compatibility
Bodine	B50	Compatible
Bodine	ELI-S-20	Compatible
FullHam	FH7-UNV-500L-CEC	Compatible
FullHam	FH11-UNV-750L-CEC	Compatible
FullHam	FH12-UNV-1400L-CEC	Compatible
Espen	VEM500DV(L)	Compatible
Espen	VEM700DV(L)	Compatible

GREEN CREATIVE has provided this emergency ballast compatibility chart for guidance when selecting an emergency ballast and lamp combination. Lamps were tested for compatibility with the above listed emergency ballasts. Emergency ballasts that do not appear on the chart might still be compatible but have not been tested. All testing has been performed with a stable main supply. The quality of the local main, existing installation and wiring, as well as different manufacturer versions of the above emergency ballasts may affect lamp performance. Since no assurance can be provided regarding these factors, it is a general recommendation to perform a test on-site prior to installing the LED lamps.