

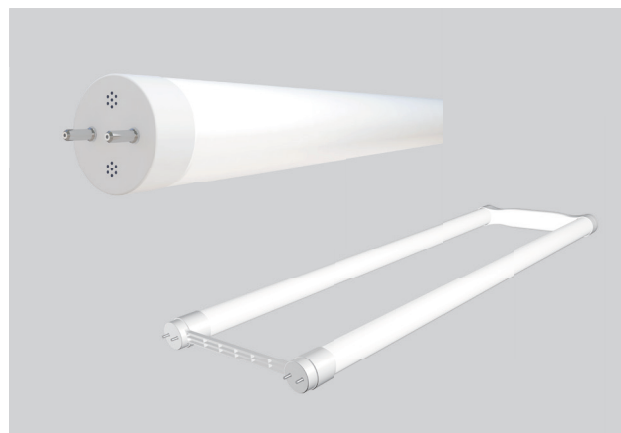


T8 DIR FAMILY

MODEL

Model: 8T8/2F/xxx/DIR/RD
 9.5T8/4F/xxx/HE/DIR
 10T8/3F/xxx/DIR
 11T8/4F/xxx/DIR
 11T8/4F/xxx/DIR/C
 14T8/4F/xxx/DIR
 15T8U6/xxx/DIR

Where xxx means 824-965 which indicates CRI and color temperature



092623

ELECTRONIC BALLAST COMPATIBILITY

Model: 8T8/2F/xxx/DIR/RD 9.5T8/4F/xxx/HE/DIR 10T8/3F/xxx/DIR 11T8/4F/xxx/DIR
 11T8/4F/xxx/DIR/C 14T8/4F/xxx/DIR

Brand	Model	Type	Maximum Lamps	Compatibility			
				(Ballasts are compatible with 120V & 277V unless otherwise noted)			
				1 lamp	2 lamps	3 lamps	4 lamps
ACT	ACT 2P32ISUNVE	IS	2	Compatible	Compatible	N.A.	N.A.
ANTRON ELECTRONICS	A32T8MICLO	IS	2	Compatible	Compatible	N.A.	N.A.
ARCATA	ACT 3P32ISUNVLE	IS	3	-	Compatible	Compatible	N.A.
Cooper Lighting	CL-432ISUNV-R1-B	IS	4	-	-	Compatible	Compatible
DAMAR	EL232-120/277HF(1688B)	IS	2	Not Compatible	Compatible	N.A.	N.A.
DAMAR	EL232HL-120/277HF(1688D)	IS	2	Not Compatible	Compatible	N.A.	N.A.
DAMAR	EL332-120/277HF(3654C)	IS	3	-	Not Compatible	Compatible	N.A.
DAMAR	EL332HL-120/277HF(3654H)	IS	3	-	Not Compatible	Only 120V Compatible	N.A.
DAMAR	EL432-120/277HF(3093B)	IS	4	-	-	Not Compatible	Compatible
DAMAR	EL432HL-120/277HF(3093C)	IS	4	-	-	Not Compatible	Compatible
DAMAR	EL432HL-120/277HF(3093C)	IS	4	-	-	Not Compatible	Compatible
EIKO	PM-2X32T8-UNV-IS-L	IS	2	Compatible	Compatible	N.A.	N.A.
EIKO	PM-2X32T8-UNV-IS	IS	2	Compatible	Compatible	N.A.	N.A.
EIKO	PM-2x32T8-UNV-IS-H	IS	2	Not Compatible	Compatible	N.A.	N.A.
EIKO	PM-2x32T8-UNV-IS-H	IS	2	Not Compatible	Compatible	N.A.	N.A.
EIKO	PM-3X32T8-UNV-IS	IS	3	-	Only 277V Compatible	Only 277V Compatible	N.A.
EIKO	PM-3X32T8-UNV-IS-H	IS	3	-	Not Compatible	Only 277V Compatible	N.A.
EIKO	PM-3X32T8-UNV-IS-L	IS	3	-	Only 277V Compatible	Only 277V Compatible	N.A.
EIKO	PM-4X32T8-UNV-IS	IS	4	-	-	Only 277V Compatible	Only 277V Compatible
EIKO	PM-4X32T8-UNV-IS-L	IS	4	-	-	Only 277V Compatible	Only 277V Compatible
ESPEN	VE232MVHIPE	IS	2	Compatible	Compatible	N.A.	N.A.
ESPEN	VE232MVHIPLE	IS	2	Compatible	Compatible	N.A.	N.A.
ESPEN	VE232MVHIPHE	IS	2	Not Compatible	Compatible	N.A.	N.A.



T8 DIR FAMILY

ELECTRONIC BALLAST COMPATIBILITY

Brand	Model	Type	Maximum Lamps	Compatibility			
				(Ballasts are compatible with 120V & 277V unless otherwise noted)			
				1 lamp	2 lamps	3 lamps	4 lamps
General Electric	GE132MAXP-N/ULTRA	IS	1	Compatible	N.A.	N.A.	N.A.
General Electric	GE-232-MV-N	IS	2	Compatible	Compatible	N.A.	N.A.
General Electric	GE232MAX-N/ULTRA	IS	2	Compatible	Compatible	N.A.	N.A.
General Electric	GE232MV-N-DIY	IS	2	Compatible	Compatible	N.A.	N.A.
General Electric	GE232MAX-G-N	IS	2	Compatible	Compatible	N.A.	N.A.
General Electric	GE-232-MV-PS-N	PS	2	Compatible	Compatible	N.A.	N.A.
General Electric	GE-232-MV-PS-L	PS	2	Compatible	Compatible	N.A.	N.A.
General Electric	GE232MAXP90-V60	IS	2	Not Compatible	Compatible	N.A.	N.A.
General Electric	GE332MV-N	IS	3	-	Only 277V Compatible	Only 277V Compatible	N.A.
General Electric	GE332MAX-N/ULTRA	IS	3	-	Only 277V Compatible	Compatible	N.A.
General Electric	GE332MAX-L/ULTRA	IS	3	-	Only 277V Compatible	Only 277V Compatible	N.A.
General Electric	GE332MAX-G-N	IS	3	-	Only 277V Compatible	Compatible	N.A.
General Electric	GE332MAXP-L/ULTRA	IS	3	-	Compatible	Compatible	N.A.
General Electric	GE332MAXP-H/ULTRA	IS	3	-	Not Compatible	Compatible	N.A.
General Electric	GE332MAXP90-V60	IS	3	-	Not Compatible	Compatible	N.A.
General Electric	GE432MAX-H/ULTRA	IS	4	-	-	Compatible	Compatible
General Electric	GE432MAX-L/ULTRA	IS	4	-	-	Compatible	Compatible
General Electric	GE432MAX-G-N	IS	4	-	-	Compatible	Compatible
General Electric	GE432-120-RES	IS	4	-	-	Only 277V Compatible	Only 277V Compatible
General Electric	GE432MAX-N/ULTRA	IS	4	-	-	Compatible	Compatible
General Electric	GE432MAX347-N	IS	4	Not Compatible	Not Compatible	Not Compatible	Not Compatible
General Electric	GE432MAXP90-S60	IS	4	-	-	Not Compatible	Compatible
General Electric	GE432MAX-H/ULTRA	IS	4	-	-	Not Compatible	Compatible
General Electric	GE432MAX90-S60	IS	4	-	-	Not Compatible	Compatible
General Electric	GE432MAX-G-H	IS	4	-	-	Not Compatible	Compatible
General Electric	GE432MAX-G-H	IS	4	-	-	Not Compatible	Compatible
General Electric	GE132MVPSN-V03	DPS	1	Compatible	N.A.	N.A.	N.A.
Halco	EP232IS/MV/HE	IS	2	Compatible	Compatible	N.A.	N.A.
Halco	EP232IS/L/MV/HE	IS	2	Compatible	Compatible	N.A.	N.A.
Halco	EP332IS/MV/HE	IS	3	-	Compatible	Compatible	N.A.
Halco	EP332IS/L/MV/HE	IS	3	-	Compatible	Compatible	N.A.
Halco	EP432IS/L/MV/HE	IS	4	-	-	Compatible	Compatible
Halco	EP432IS/120/MC	IS	4	-	-	Compatible	Compatible
Halco	EP432IS/MV/HE	IS	4	-	-	Only 277V Compatible	Only 277V Compatible
HATCH	HL232BIS/UV/HE/W	IS	2	Compatible	Compatible	N.A.	N.A.
HATCH	HL432BIS/UV/HE/W	IS	4	-	-	Only 277V Compatible	Compatible



T8 DIR FAMILY

ELECTRONIC BALLAST COMPATIBILITY

Brand	Model	Type	Maximum Lamps	Compatibility			
				(Ballasts are compatible with 120V & 277V unless otherwise noted)			
				1 lamp	2 lamps	3 lamps	4 lamps
HOWARD INDUSTRIES	EPL2/32IS/MV/MC/HE	IS	2	Only 277V Compatible	Only 277V Compatible	N.A.	N.A.
HOWARD INDUSTRIES	EP2/32IS/MV/MC/HE	IS	2	Compatible	Compatible	N.A.	N.A.
HOWARD INDUSTRIES	EPH2/32IS/MV/MC/HE	IS	2	Compatible	Only 277V Compatible	N.A.	
HOWARD INDUSTRIES	EP2/32PRS/MV/MC/HE	PRS	2	Not Compatible	Compatible	N.A.	N.A.
HOWARD INDUSTRIES	EP2/32PRS/MV/MC/HE	PRS	2	Not Compatible	Compatible	N.A.	N.A.
HOWARD INDUSTRIES	EP3/32IS/MV/SC/HE	IS	3	-	Compatible	Compatible	N.A.
HOWARD INDUSTRIES	EPL3/32IS/MV/SC/HE	IS	3	-	Compatible	Compatible	N.A.
HOWARD INDUSTRIES	EP3/32IS/MV/MC/HE	IS	3	-	Compatible	Compatible	N.A.
HOWARD INDUSTRIES	EPH3/32IS/MV/MC/HE	IS	3	-	Only 277V Compatible	Only 277V Compatible	-
HOWARD INDUSTRIES	EPL4/32IS/MV/MC/HE	IS	4	-	-	Compatible	Compatible
HOWARD INDUSTRIES	EP4/32IS/MV/MC/HE	IS	4	-	-	Compatible	Compatible
HOWARD INDUSTRIES	EP4/32PPRS/MV/SC/HE	PRS	4	-	-	Compatible	Compatible
HOWARD INDUSTRIES	EPH4/32IS/MV/SC/HE	IS	4	-	-	Not Compatible	Compatible
KEYSTONE	KTEB-232LBF-1-TP-PIC-EV	IS	2	Only 277V Compatible	Only 277V Compatible	N.A.	N.A.
KEYSTONE	KTEB-232-UV-PS-L-P	PS	2	Compatible	Compatible	N.A.	N.A.
KEYSTONE	KTEB-232-UV-IS-H-P	IS	2	Not Compatible	Only 277V Compatible	N.A.	N.A.
KEYSTONE	KTEB-232-UV-PS-H-P	PS	2	Not Compatible	Compatible	N.A.	N.A.
KEYSTONE	KTEB-232-UV-PS-H-P	PS	2	Not Compatible	Compatible	N.A.	N.A.
KEYSTONE	KTEB-332-UV-IS-N-P	IS	3	-	Compatible	Compatible	N.A.
KEYSTONE	KTEB-332-UV-IS-H-P	IS	3	-	Not Compatible	Compatible	N.A.
KEYSTONE	KTEB-332-UV-PS-H-P	PS	3	-	Not Compatible	Compatible	N.A.
KEYSTONE	KTEB-332-UV-PS-H-P	PS	3	-	Not Compatible	Compatible	N.A.
KEYSTONE	KTEB-432RIS-1-TP-SL	IS	4	-	-	Only 277V Compatible	Only 277V Compatible
KEYSTONE	KTEB-432-UV-PS-N-P	PS	4	-	-	Compatible	Compatible
KEYSTONE	KTEB-432-UV-IS-N-P	IS	4	-	-	Only 277V Compatible	Only 277V Compatible
KEYSTONE	KTEB-432-UV-IS-H-P	IS	4	-	-	Not Compatible	Compatible
KEYSTONE	KTLD-2T8LED-UV-IS-VDIM	DPS	2	Compatible	Compatible	N.A.	N.A.
LIGHTING PRODUCTS LIMITED	EB-332EBF-UV-TP-HE	IS	3	-	Compatible	Compatible	N.A.
MAXLITE	SKEU322HEL/SC	IS	2	Compatible	Compatible	N.A.	N.A.
MAXLITE	MLEU322HEL/SC	IS	2	Compatible	Compatible	N.A.	N.A.
MAXLITE	SKEU323L/SC	IS	3	-	Compatible	Compatible	N.A.
MAXLITE	MLEU323H/SC	IS	3	-	Not Compatible	Only 277V Compatible	N.A.
MAXLITE	SKEU324HE/SC	IS	4	-	-	Compatible	Compatible
MAXLITE	MLEU324HE/SC	IS	4	-	-	Only 277V Compatible	Only 277V Compatible
OSRAM SYLVANIA	QHE 1X32T8/UNV ISN-SC	IS	1	Compatible	N.A.	N.A.	N.A.



T8 DIR FAMILY

ELECTRONIC BALLAST COMPATIBILITY

Brand	Model	Type	Maximum Lamps	Compatibility			
				(Ballasts are compatible with 120V & 277V unless otherwise noted)			
				1 lamp	2 lamps	3 lamps	4 lamps
OSRAM SYLVANIA	QHE 1X32T8/UNV ISL-SC	IS	1	Compatible	N.A.	N.A.	N.A.
OSRAM SYLVANIA	QHE 1X32T8/UNV ISH-SC	IS	1	Compatible	N.A.	N.A.	N.A.
OSRAM SYLVANIA	QTP 2X32T8/UNV ISN-SC	IS	2	Compatible	Compatible	N.A.	N.A.
OSRAM SYLVANIA	QHE 2X32T8/UNV ISN-SC	IS	2	Compatible	Compatible	N.A.	N.A.
OSRAM SYLVANIA	QHE 2X32T8/UNV ISL-SC	IS	2	Compatible	Compatible	N.A.	N.A.
OSRAM SYLVANIA	QTP2x32T8/277 ISN-D	IS	2	Only 277V Compatible	Only 277V Compatible	N.A.	N.A.
OSRAM SYLVANIA	QTP 2X32T8/UNV ISL-SC	IS	2	Compatible	Compatible	N.A.	N.A.
OSRAM SYLVANIA	QHE 2X32T8/UNV PSH-HT	PRS	2	Not Compatible	Compatible	N.A.	N.A.
OSRAM SYLVANIA	QHE 2X32T8/UNV PSN-MC	PRS	2	Compatible	Compatible	N.A.	N.A.
OSRAM SYLVANIA	QHE 2X32T8/UNV ISH HT-SC	IS	2	-	-	Not Compatible	Compatible
OSRAM SYLVANIA	QHE 2X32T8/UNV ISH HT-SC	IS	2	-	-	Not Compatible	Compatible
OSRAM SYLVANIA	QTP 3X32T8/UNV ISN-SC	IS	3	-	Compatible	Compatible	N.A.
OSRAM SYLVANIA	QHE 3X32T8/UNV ISL-SC	IS	3	-	Compatible	Compatible	N.A.
OSRAM SYLVANIA	QHE 3X32T8/UNV ISH-SC	IS	3	-	Not Compatible	Compatible	N.A.
OSRAM SYLVANIA	QHE 3x32T8/UNV ISH HT-SC	IS	3	-	Not Compatible	Compatible	N.A.
OSRAM SYLVANIA	QHE 3x32T8/UNV ISH HT-SC	IS	3	-	Not Compatible	Compatible	N.A.
OSRAM SYLVANIA	QHE 4X32T8/UNV ISN-SC	IS	4	-	-	Compatible	Compatible
OSRAM SYLVANIA	QHE 4X32T8/UNV ISL-SC	IS	4	-	-	Compatible	Compatible
OSRAM SYLVANIA	QHE 3X32T8/UNV ISN-SC	IS	4	-	-	Compatible	Compatible
OSRAM SYLVANIA	QHE 4X32T8/UNV PSN-SC	PRS	4	-	-	Compatible	Compatible
Pacific Fluorescent	EB-232IS-120-RES	IS	2	Only 277V Compatible	Only 277V Compatible	N.A.	N.A.
Philips-Advance	ICN-132-MC	IS	1	Only 277V Compatible	N.A.	N.A.	N.A.
Philips-Advance	IOP-1P32-LW-N	IS	1	Only 277V Compatible	N.A.	N.A.	N.A.
Philips-Advance	IOP-1P32-SC	IS	1	Compatible	N.A.	N.A.	N.A.
Philips-Advance	IOP-1P32-LW-SC	IS	1	Compatible	N.A.	N.A.	N.A.
Philips-Advance	IOPA-2P32-N	IS	2	Compatible	Compatible	N.A.	N.A.
Philips-Advance	IOP-2P32-LW-N	IS	2	Compatible	Compatible	N.A.	N.A.
Philips-Advance	VEL-2P32-SC	IS	2	Not Compatible	Only 277V Compatible	N.A.	N.A.
Philips-Advance	IOPA-2P32-LW-N	IS	2	Compatible	Compatible	N.A.	N.A.
Philips-Advance	ICN-2P32-N	IS	2	Not Compatible	Compatible	N.A.	N.A.
Philips-Advance	IOP-2P32-LW-SC	IS	2	Only 277V Compatible	Only 277V Compatible	N.A.	N.A.
Philips-Advance	IOP-2PSP32-N	PS	2	Not Compatible	Compatible	N.A.	N.A.
Philips-Advance	IOP-2P32-LW-SC	IS	2	Only 277V Compatible	Only 277V Compatible	N.A.	N.A.
Philips-Advance	IOP-2PSP32-N	PS	2	Not Compatible	Compatible	N.A.	N.A.
Philips-Advance	ICN-3P32-SC	IS	3	-	Compatible	Compatible	N.A.



T8 DIR FAMILY

ELECTRONIC BALLAST COMPATIBILITY

Brand	Model	Type	Maximum Lamps	Compatibility			
				(Ballasts are compatible with 120V & 277V unless otherwise noted)			
				1 lamp	2 lamps	3 lamps	4 lamps
Philips-Advance	VEL-3P32-SC	IS	3	-	Compatible	Compatible	N.A.
Philips-Advance	IOP-3PSP32-SC	PS	3	-	N.A.	Compatible	N.A.
Philips-Advance	IOP-4P32-N	IS	4	-	-	Compatible	Compatible
Philips-Advance	IOP-4P32-LW-N	IS	4	-	-	Compatible	Compatible
Philips-Advance	REB-4P32-SC	IS	4	-	-	Only 277V Compatible	Only 277V Compatible
Philips-Advance	IOPA-4P32-SC	IS	4	-	-	Compatible	Compatible
Philips-Advance	IOP-4PSP32-SC	PS	4	-	-	Compatible	Compatible
Philips-Advance	IOP-4PSP32-LW-SC	PS	4	-	-	Compatible	Compatible
Philips-Advance	IOPA-4P32-HL	IS	4	-	-	Not Compatible	Compatible
Philips-Advance	IOPA-4P32-HL	IS	4	-	-	Not Compatible	Compatible
PLUSRITE	BAF232IS/MV	IS	2	Compatible	Compatible	N.A.	N.A.
PLUSRITE	BAF332IS/MV	IS	3	-	Compatible	Compatible	N.A.
Plusrite	BAF332IS/MV/L	IS	3	-	Compatible	Compatible	N.A.
Plusrite	BAF432IS/MV	IS	4	-	-	Compatible	Compatible
Plusrite	BAF432IS/MV/L	IS	4	-	-	Compatible	Compatible
ProLume	EP232IS/L/MV/SL	IS	2	Compatible	Compatible	N.A.	N.A.
Prolume	E432IS/120/R/SL	IS	4	-	-	Only 277V Compatible	Only 277V Compatible
SOLA	E-758-U-232-MC	IS	2	Only 277V Compatible	Compatible	N.A.	N.A.
SUNPARK	U-1/32PSE	PS	1	Compatible	N.A.	N.A.	N.A.
SUNPARK	U-2/32ISE-LBF	IS	2	Compatible	Compatible	N.A.	N.A.
SUNPARK	U-3/32ISE	IS	3	-	Compatible	Compatible	N.A.
SUNPARK	120-3/32IS MPF	IS	3	-	Only 277V Compatible	Only 277V Compatible	N.A.
SUNPARK	U-3/32ISE-HBF	IS	3	-	Not Compatible	Compatible	N.A.
SUNPARK	U-4/32IS HP,F	IS	4	-	-	Compatible	Compatible
SUNPARK	U-4/32ISE-LBF	IS	4	-	-	Compatible	Compatible
SUNPARK	U-4/32IS HBF	IS	4	-	-	Not Compatible	Compatible
Superior Life	70210	PS	2	Compatible	Compatible	N.A.	N.A.
Superior Life	70201	IS	2	Not Compatible	Compatible	N.A.	N.A.
Superior Life	70211	PS	4	-	-	Compatible	Compatible
SYLVANIA	QT 3x32/277 IS	IS	3	-	Compatible	Compatible	N.A.
TCP	E3P32ISUNVE	IS	3	-	Compatible	Compatible	N.A.
TCP	E3P32ISUNVLE	IS	3	-	Not Compatible	Compatible	N.A.
TCP	E4P32ISUNVE	IS	4	-	-	Compatible	Compatible
TOPAZ	B432IUNVHEH/A-TPZ	IS	4	-	-	Not Compatible	Compatible
Universal Lighting Technologies	B132IUNVEL-A	IS	1	Compatible	N.A.	N.A.	N.A.



T8 DIR FAMILY

ELECTRONIC BALLAST COMPATIBILITY

Brand	Model	Type	Maximum Lamps	Compatibility			
				(Ballasts are compatible with 120V & 277V unless otherwise noted)			
				1 lamp	2 lamps	3 lamps	4 lamps
Universal Lighting Technologies	B132IUNVHP-N	IS	1	Only 277V Compatible	N.A.	N.A.	N.A.
Universal Lighting Technologies	B232IUNVHP-N	IS	2	Compatible	Compatible	N.A.	N.A.
Universal Lighting Technologies	B232IUNVEL-A	IS	2	Compatible	Compatible	N.A.	N.A.
Universal Lighting Technologies	B233IUNVHE-A	IS	2	Compatible	Compatible	N.A.	N.A.
Universal Lighting Technologies	B232IUNVHP-B	IS	2	Compatible	Compatible	N.A.	N.A.
Universal Lighting Technologies	B232PUNVHE-B	PS	2	Compatible	Compatible	N.A.	N.A.
Universal Lighting Technologies	B232SR277S30	RS	2	Not Compatible	Only 277V Compatible	N.A.	
Universal Lighting Technologies	B232IUNV-C	IS	2	Not Compatible	Compatible	N.A.	N.A.
Universal Lighting Technologies	B332IUNVHP-A	IS	3	-	Compatible	Compatible	N.A.
Universal Lighting Technologies	B332PUNVHE-A	PS	3	-	Compatible	Compatible	N.A.
Universal Lighting Technologies	B432IUNVHE L-A	IS	4	-	-	Compatible	Compatible
Universal Lighting Technologies	B432IUNVHP-A	IS	4	-	-	Compatible	Compatible
Universal Lighting Technologies	B432IUNVHE-A	IS	4	-	-	Compatible	Compatible
Universal Lighting Technologies	B432IUNVHEH-E	IS	4	-	-	Compatible	Compatible
Universal Lighting Technologies	B232I277RH-A	IS	4	-	-	Not Compatible	Only 120V Compatible
Universal Lighting Technologies	B432PUNVHE-A	PS	4	-	-	Compatible	Compatible
Watran	DB-232N-MV-TP-HE	IS	2	Compatible	Compatible	N.A.	N.A.
Watran	DB-232N-MV-TP-HE (SC)	IS	2	Compatible	Compatible	N.A.	N.A.
Watran	DB-332N-MV-TP-HE	IS	3	-	Compatible	Compatible	N.A.
Watran	DB-432N-MV-TP-HE	IS	4	-	-	Compatible	Compatible
Watran	DB-432L-MV-TP-HE	IS	4	-	-	Compatible	Compatible
WORK HORSE	WHSG3-UNV-T8-IS	IS	3	-	Compatible	Compatible	N.A.
WORK HORSE	WHSG4-UNV-T8-IS	IS	4	-	-	Compatible	Compatible

N.A. : Not available

- : Not tested



T8 DIR FAMILY

ELECTRONIC BALLAST COMPATIBILITY

Model: 15T8U6/xxx/DIR

Brand	Model	Type	Maximum Lamps	Compatibility			
				(Ballasts are compatible with 120V & 277V unless otherwise noted)			
				1 lamp	2 lamps	3 lamps	4 lamps
ACT	ACT 2P32ISUNVE	IS	2	Compatible	Compatible	N.A.	N.A.
ANTRON ELECTRONICS	A32T8MICLO	IS	2	Compatible	Compatible	N.A.	N.A.
ARCATA	ACT 3P32ISUNVLE	IS	3	-	Compatible	Compatible	N.A.
DAMAR	EL232-120/277HF(1688B)	IS	2	Only 120V Compatible	Compatible	N.A.	N.A.
DAMAR	EL232HL-120/277HF(1688D)	IS	2	Compatible	Compatible	N.A.	N.A.
DAMAR	EL232-120/277HF(1688B)	IS	2	Only 120V Compatible	Compatible	N.A.	N.A.
DAMAR	EL332-120/277HF(3654C)	IS	3	-	Compatible	Compatible	N.A.
DAMAR	EL332HL-120/277HF(3654H)	IS	3	-	Compatible	Compatible	N.A.
DAMAR	EL432-120/277HF(3093B)	IS	4	-	-	Compatible	Compatible
EIKO	PM-2X32T8-UNV-IS-L	IS	2	Compatible	Compatible	N.A.	N.A.
EIKO	PM-2X32T8-UNV-IS	IS	2	Compatible	Compatible	N.A.	N.A.
EIKO	PM-2x32T8-UNV-IS-H	IS	2	Compatible	Compatible	N.A.	N.A.
EIKO	PM-3X32T8-UNV-IS	IS	3	-	Compatible	Compatible	N.A.
EIKO	PM-3X32T8-UNV-IS-L	IS	3	-	Compatible	Compatible	N.A.
EIKO	PM-4X32T8-UNV-IS	IS	4	-	-	Compatible	Compatible
EIKO	PM-4X32T8-UNV-IS-L	IS	4	-	-	Compatible	Compatible
ESPEN	VE232MVHIPE	IS	2	Compatible	Compatible	N.A.	N.A.
ESPEN	VE232MVHIPL	IS	2	Compatible	Compatible	N.A.	N.A.
General Electric	GE132MAX-H/ULTRA	IS	1	Compatible	N.A.	N.A.	N.A.
General Electric	GE132MAXP-N/ULTRA	IS	1	Compatible	N.A.	N.A.	N.A.
General Electric	GE-232-MV-N	IS	2	Compatible	Compatible	N.A.	N.A.
General Electric	GE232MAX-N/ULTRA	IS	2	Compatible	Compatible	N.A.	N.A.
General Electric	GE232MV-N-DIY	IS	2	Compatible	Compatible	N.A.	N.A.
General Electric	GE232MAX-G-L	IS	2	Compatible	Compatible	N.A.	N.A.
General Electric	GE232-MVPS-N	PS	2	Compatible	Compatible	N.A.	N.A.
General Electric	GE332MV-N	IS	3	-	Compatible	Compatible	N.A.
General Electric	GE332MAX-N/ULTRA	IS	3	-	Compatible	Compatible	N.A.
General Electric	GE332MAX-L/ULTRA	IS	3	-	Compatible	Compatible	N.A.
General Electric	GE332MAX-G-N	IS	3	-	Compatible	Compatible	N.A.
General Electric	GE332MAXP-H/ULTRA	IS	3	-	Compatible	Compatible	N.A.
General Electric	GE332MAXP-L/ULTRA	IS	3	-	-	Compatible	Compatible
General Electric	GE-332-MVPS-N	PS	3	-	Compatible	Compatible	N.A.
General Electric	GE432MAX-L/ULTRA	IS	4	-	-	Compatible	Compatible
General Electric	GE432MAX-G-N	IS	4	-	-	Compatible	Compatible



T8 DIR FAMILY

ELECTRONIC BALLAST COMPATIBILITY

Brand	Model	Type	Maximum Lamps	Compatibility			
				(Ballasts are compatible with 120V & 277V unless otherwise noted)			
				1 lamp	2 lamps	3 lamps	4 lamps
General Electric	GE432MV-N-42T	IS	4	-	-	Compatible	Compatible
General Electric	GE432MAX-N/ULTRA	IS	4	-	-	Compatible	Compatible
General Electric	GE432MAX90-S60	IS	4	-	-	Compatible	Compatible
General Electric	GE432-MVPS-N	PS	4	-	-	Compatible	Compatible
Halco	EP232IS/MV/HE	IS	2	Compatible	Compatible	N.A.	N.A.
Halco	EP232IS/L/MV/HE	IS	2	Compatible	Compatible	N.A.	N.A.
Halco	EP332IS/MV/HE	IS	3	-	Compatible	Compatible	N.A.
Halco	EP332IS/L/MV/HE	IS	3	-	Compatible	Compatible	N.A.
Halco	EP432IS/MV/HE	IS	4	-	-	Compatible	Compatible
Halco	EP432IS/L/MV/HE	IS	4	-	-	Compatible	Compatible
HATCH	HL232BIS/UV/HE/W	IS	2	Compatible	Compatible	N.A.	N.A.
HATCH	HL432BIS/UV/HE/W	IS	4	-	-	Compatible	Compatible
HOWARD INDUSTRIES	EPH2/321S/MV/MC/HE	IS	2	Compatible	Compatible	N.A.	N.A.
HOWARD INDUSTRIES	E2/32IS-120MC	IS	2	Not Compatible	Only 120V Compatible	N.A.	N.A.
HOWARD INDUSTRIES	EPL2/32IS/MV/MC/HE	IS	2	Only 120V Compatible	Compatible	N.A.	N.A.
HOWARD INDUSTRIES	EP2/32IS/MV/MC/HE	IS	2	Not Compatible	Compatible	N.A.	N.A.
HOWARD INDUSTRIES	EP2/32IS/MV/MC/HE	IS	2	Not Compatible	Compatible	N.A.	N.A.
HOWARD INDUSTRIES	EP3/32IS/MV/SC/HE	IS	3	-	Compatible	Compatible	N.A.
HOWARD INDUSTRIES	EPL3/32IS/MV/SC/HE	IS	3	-	Compatible	Compatible	N.A.
HOWARD INDUSTRIES	EP3/32IS/MV/MC/HE	IS	3	-	Compatible	Compatible	N.A.
HOWARD INDUSTRIES	EPL4/32IS/MV/MC/HE	IS	4	-	-	Compatible	Compatible
HOWARD INDUSTRIES	EP4/32IS/MV/MC/HE	IS	4	-	-	Compatible	Compatible
HOWARD INDUSTRIES	EP4/32PPRS/MV/SC/HE	PRS	4	-	-	Compatible	Compatible
KEYSTONE	KTEB-232-UV-IS-N-P	IS	2	Compatible	Compatible	N.A.	N.A.
KEYSTONE	KTEB-232LBF-1-TP-PIC-EV	IS	2	Only 120V Compatible	Only 120V Compatible	N.A.	N.A.
KEYSTONE	KTEB-332-UV-IS-N-P	IS	3	-	Compatible	Compatible	N.A.
KEYSTONE	KTEB-332-UV-IS-H-P	IS	3	-	Compatible	Compatible	N.A.
KEYSTONE	KTEB-432RIS-1-TP-SL	IS	4	N.A.	N.A.	Only 120V Compatible	Only 120V Compatible
KEYSTONE	KTEB-432-UV-IS-N-P	IS	4	-	-	Compatible	Compatible
KEYSTONE	KTLD-2T8LED-UV-IS-VDIM	DPS	2	Compatible	Compatible	N.A.	N.A.
LIGHTING PRODUCTS LIMITED	EB-332EBF-UV-TP-HE	IS	3	-	Compatible	Compatible	N.A.
MAXLITE	SKEU322HEL/SC	IS	2	Compatible	Compatible	N.A.	N.A.
MAXLITE	MLEU322HEL/SC	IS	2	Compatible	Compatible	N.A.	N.A.
MAXLITE	SKEU323L/SC	IS	3	-	Compatible	Compatible	N.A.
MAXLITE	MLEU323H/SC	IS	3	-	Compatible	Compatible	N.A.



T8 DIR FAMILY

ELECTRONIC BALLAST COMPATIBILITY

Brand	Model	Type	Maximum Lamps	Compatibility			
				(Ballasts are compatible with 120V & 277V unless otherwise noted)			
				1 lamp	2 lamps	3 lamps	4 lamps
MAXLITE	SKEU324HE/SC	IS	4	-	-	Compatible	Compatible
MAXLITE	MLEU324HE/SC	IS	4	-	-	Compatible	Compatible
OSRAM SYLVANIA	QHE 1X32T8/UNV ISN-SC	IS	1	Compatible	N.A.	N.A.	N.A.
OSRAM SYLVANIA	QHE 1X32T8/UNV ISL-SC	IS	1	Compatible	N.A.	N.A.	N.A.
OSRAM SYLVANIA	QHE 1X32T8/UNV ISH-SC	IS	1	Only 120V Compatible	N.A.	N.A.	N.A.
OSRAM SYLVANIA	QTP 2X32T8/UNV ISN-SC	IS	2	Compatible	Compatible	N.A.	N.A.
OSRAM SYLVANIA	QHE 2X32T8/UNV ISN-SC	IS	2	Compatible	Compatible	N.A.	N.A.
OSRAM SYLVANIA	QHE 2X32T8/UNV ISL-SC	IS	2	Compatible	Compatible	N.A.	N.A.
OSRAM SYLVANIA	QT2X32/120 IS-SC	IS	2	Not Compatible	Only 120V Compatible	N.A.	N.A.
OSRAM SYLVANIA	QTP 2X32T8/UNV ISL-SC	IS	2	Compatible	Compatible	N.A.	N.A.
OSRAM SYLVANIA	QHE 2X32T8/UNV ISH HT-SC	IS	2	Compatible	Compatible	N.A.	N.A.
OSRAM SYLVANIA	QHE 2X32T8/UNV PSH-HT	PRS	2	Compatible	Compatible	N.A.	N.A.
OSRAM SYLVANIA	QHE 2X32T8/UNV PSN-MC	PRS	2	Compatible	Compatible	N.A.	N.A.
OSRAM SYLVANIA	QTP 3X32T8/UNV ISN-SC	IS	3	-	Compatible	Compatible	N.A.
OSRAM SYLVANIA	QHE 3X32T8/UNV ISL-SC	IS	3	-	Compatible	Compatible	N.A.
OSRAM SYLVANIA	QHE 3X32T8/UNV PSN-SC	PRS	3	-	Compatible	Compatible	N.A.
OSRAM SYLVANIA	QHE 4X32T8/UNV ISN-SC	IS	4	-	-	Compatible	Compatible
OSRAM SYLVANIA	QHE 4X32T8/UNV ISL-SC	IS	4	-	-	Compatible	Compatible
OSRAM SYLVANIA	QTP 4x32T8/UNV ISN-SC	IS	4	-	-	Only 120V Compatible	Compatible
OSRAM SYLVANIA	QHE 3X32T8/UNV ISN-SC	IS	4	-	-	Compatible	Compatible
OSRAM SYLVANIA	QHE 4x32T8/UNV ISH HT-1	IS	4	-	-	Compatible	Compatible
OSRAM SYLVANIA	QHE 4X32T8/UNV PSN-SC	PRS	4	-	-	Compatible	Compatible
Pacific Fluorescent	EB-232IS-120-RES	IS	2	Only 120V Compatible	Only 120V Compatible	N.A.	N.A.
Philips-Advance	ICN-132-MC	IS	1	Compatible	N.A.	N.A.	N.A.
Philips-Advance	ICN-2P32-N	IS	2	Compatible	Compatible	N.A.	N.A.
Philips-Advance	IOP-2P32-N	IS	2	Compatible	Compatible	N.A.	N.A.
Philips-Advance	IOP-2P32-LW-N	IS	2	Compatible	Compatible	N.A.	N.A.
Philips-Advance	REB-2P32-SC	IS	2	Not Compatible	Only 120V Compatible	N.A.	N.A.
Philips-Advance	IOPA-2P32-HL-N	IS	2	Compatible	Compatible	N.A.	N.A.
Philips-Advance	VEL-2P32-RH-TP	IS	2	Not Compatible	Only 277V Compatible	N.A.	N.A.
Philips-Advance	IOP-2PSP32-N	PS	2	Not Compatible	Compatible	N.A.	N.A.
Philips-Advance	IOP-2PSP32-LW-N	PS	2	Not Compatible	Compatible	N.A.	N.A.
Philips-Advance	REB-2P32-SC	IS	2	Not Compatible	Only 120V Compatible	N.A.	N.A.
Philips-Advance	IOP-2PSP32-N	PS	2	Not Compatible	Compatible	N.A.	N.A.
Philips-Advance	IOP-2PSP32-LW-N	PS	2	Not Compatible	Compatible	N.A.	N.A.



T8 DIR FAMILY

ELECTRONIC BALLAST COMPATIBILITY

Brand	Model	Type	Maximum Lamps	Compatibility			
				(Ballasts are compatible with 120V & 277V unless otherwise noted)			
				1 lamp	2 lamps	3 lamps	4 lamps
Philips-Advance	IOPA-3P32-N	IS	3	-	Compatible	Compatible	N.A.
Philips-Advance	IOP-3PSP32-SC	PS	3	-	Compatible	Compatible	N.A.
Philips-Advance	IOP-3PSP32-LW-SC	PS	3	-	Compatible	Compatible	N.A.
Philips-Advance	IOPA-4P32-N	IS	4	-	-	Compatible	Compatible
Philips-Advance	IOPA-4P32-HL-SC	IS	4	-	-	Compatible	Compatible
Philips-Advance	IOP-4P32-N	IS	4	-	-	Compatible	Compatible
Philips-Advance	IOP-4P32-LW-N	IS	4	-	-	Compatible	Compatible
Philips-Advance	ICN-4P32-N	IS	4	-	-	Compatible	Compatible
Philips-Advance	IOP-4P32-SC	IS	4	-	-	Compatible	Not Compatible
Philips-Advance	IOPA-4P32-SC	IS	4	-	-	Compatible	Compatible
Philips-Advance	IOP-4PSP32-LW-SC	PS	4	-	-	Compatible	Compatible
Philips-Advance	IOP-4P32-SC	IS	4	-	-	Not Compatible	Compatible
Philips-Advance	IZT-2S32-SC	PS	2	Compatible	Not Compatible	N.A.	N.A.
PLUSRITE	BAF232IS/MV	IS	2	Compatible	Compatible	N.A.	N.A.
Plusrite	BAF232IS/MV/L	IS	2	Compatible	Compatible	N.A.	N.A.
PLUSRITE	BAF332IS/MV	IS	3	-	Compatible	Compatible	N.A.
Plusrite	BAF332IS/MV/L	IS	3	-	Compatible	Compatible	N.A.
Plusrite	BAF432IS/MV	IS	4	-	-	Compatible	Compatible
Plusrite	BAF432IS/MV/L	IS	4	-	-	Compatible	Compatible
ProLume	EP232IS/L/MV/SL	IS	2	Compatible	Compatible	N.A.	N.A.
SOLA	E-758-U-232-MC	IS	2	Compatible	Compatible	N.A.	N.A.
SUNPARK	120-1/32IS HPF	IS	1	Only 120V Compatible	N.A.	N.A.	N.A.
SUNPARK	U-1/32PSE	PS	1	Compatible	N.A.	N.A.	N.A.
SUNPARK	LC 12011T	PS	1	Only 120V Compatible	N.A.	N.A.	N.A.
SUNPARK	U-1/32PSE	PS	1	Compatible	N.A.	N.A.	N.A.
SUNPARK	U-2/32IS HBF	IS	2	Compatible	Compatible	N.A.	N.A.
SUNPARK	U-2/32ISE-LBF	IS	2	Compatible	Compatible	N.A.	N.A.
SUNPARK	U-3/32ISE	IS	3	-	Compatible	Compatible	N.A.
SUNPARK	U-3/32ISE-HBF	IS	3	-	Compatible	Compatible	N.A.
SUNPARK	U-4/32IS HP,F	IS	4	-	-	Compatible	Compatible
SUNPARK	U-4/32IS HBF	IS	4	-	-	Compatible	Compatible
SUNPARK	U-4/32ISE-LBF	IS	4	-	-	Compatible	Compatible
Superior Life	70201	IS	2	Only 120V Compatible	Compatible	N.A.	N.A.
Superior Life	70210	PS	2	Compatible	Compatible	N.A.	N.A.
Superior Life	70201	IS	2	Only 120V Compatible	Compatible	N.A.	N.A.



T8 DIR FAMILY

ELECTRONIC BALLAST COMPATIBILITY

Brand	Model	Type	Maximum Lamps	Compatibility			
				(Ballasts are compatible with 120V & 277V unless otherwise noted)			
				1 lamp	2 lamps	3 lamps	4 lamps
Superior Life	70211	PS	4	-	-	N.A.	Compatible
TCP	E2P32ISUNVHE	IS	2	Only 120V Compatible	Compatible	Compatible	N.A.
TCP	E2P32ISUNVHE	IS	2	Only 120V Compatible	Compatible	N.A.	N.A.
TCP	E3P32ISUNVE	IS	3	-	Compatible	Compatible	N.A.
TCP	E3P32ISUNVLE	IS	3	-	Compatible	Compatible	N.A.
TCP	E4P32ISUNVLE	IS	4	-	-	Only 120V Compatible	Only 120V Compatible
TCP	E4P32ISUNVE	IS	4	-	-	Compatible	Compatible
TCP	E4P32ISUNVLE	IS	4	-	-	Only 120V Compatible	Only 120V Compatible
TOPAZ	B432IUNVHEH/A-TPZ	IS	4	-	-	Compatible	Compatible
Universal Lighting Technologies	B132IUNVHP-N	IS	1	Compatible	N.A.	N.A.	N.A.
Universal Lighting Technologies	B232IUNVEL-A	IS	2	Compatible	Compatible	-	-
Universal Lighting Technologies	B233IUNVHE-A	IS	2	Compatible	Compatible	-	-
Universal Lighting Technologies	B232IUNVHP-B	IS	2	Compatible	Compatible	N.A.	N.A.
Universal Lighting Technologies	B232IUNV-C	IS	2	Compatible	Compatible	N.A.	N.A.
Universal Lighting Technologies	B232PUNVHE-B	PS	2	Not Compatible	Compatible	N.A.	N.A.
Universal Lighting Technologies	B332IUNVHP-A	IS	3	-	Compatible	Compatible	N.A.
Universal Lighting Technologies	B432IUNVHE L-A	IS	4	-	-	Compatible	Compatible
Universal Lighting Technologies	B432IUNVHP-A	IS	4	-	-	Compatible	Compatible
Universal Lighting Technologies	B432IUNVHE-A	IS	4	-	-	Compatible	Compatible
Universal Lighting Technologies	B432IUNVHEH-E	IS	4	-	-	Compatible	Compatible
Universal Lighting Technologies	B232I277RH-A	IS	4	-	-	Not Compatible	Only 120V Compatible
Watran	DB-232N-MV-TP-HE	IS	2	Compatible	Compatible	N.A.	N.A.
Watran	DB-232N-MV-TP-HE (SC)	IS	2	Only 120V Compatible	Compatible	N.A.	N.A.
Watran	DB-232N-MV-TP-HE (SC)	IS	2	Only 120V Compatible	Compatible	N.A.	N.A.
Watran	DB-332N-MV-TP-HE	IS	3	-	Compatible	Compatible	N.A.
Watran	DB-432N-MV-TP-HE	IS	4	-	-	Compatible	Compatible
Watran	DB-432L-MV-TP-HE	IS	4	-	-	Compatible	Compatible
WORK HORSE	WHS3-UNV-T8-IS	IS	3	-	Compatible	Compatible	N.A.
WORK HORSE	WHS4-UNV-T8-IS	IS	4	-	-	Compatible	Compatible

N.A. : Not available

- : Not tested

GREEN CREATIVE has provided this ballast compatibility chart for guidance when selecting a ballast and lamp combination. Lamps were tested for compatibility with the above listed Instant Start (IS) and Programmed Start (PS) ballasts. Ballasts that do not appear on the chart might still be compatible but have not been tested. All testing has been performed with a stable main supply. The quality of the local main, existing installation and wiring, as well as different manufacturer versions of the above ballasts may affect lamp performance. Since no assurance can be provided regarding these factors, it is a general recommendation to perform a test on-site prior to installing the LED lamps.