



SURFACE MOUNT

LED Panel Light



KEY FEATURES

- UL, DLC, Damp Rated
- Multiple Sizes
- Built-in Driver
- Up To 110lm/w
- CCT & Wattage Adjustable
- 5 Years Limited Warranty

NEW CONSTRUCTION AND RETROFIT:

- Class A Office
- High-end Shops
- Contemporary Buildings
- Corridors
- Lobbies
- Hotel
- Hospital

AIR SURFACE PANELS

The CCT and wattage adjustable LED flat panel light provides a modern alternative to traditional fluorescent troffer, reaching up to 110lm/w. The unique internal driver and only 0.68" thickness allow you the ability to install the LED light just about anywhere, especially for the small and confined space, including surface mounted, recessed and suspended installations methods. It is available for 1-10V dimming with 5 years warranty.





THINNEST SURFACED MOUNTED

The unique internal driver makes the panel only 0.68" thickness. Nearly NO gap between the panel and the dry ceiling for surface mounted installation.

Internal Driver, Saving Shipping Costs

The unique internal driver design makes the whole light ultra slim with only 0.68" thickness !



▲ 1000Bulbs Panel With Internal Driver

▲ Standard Panel With External Driver



Aluminium Alloy Frame



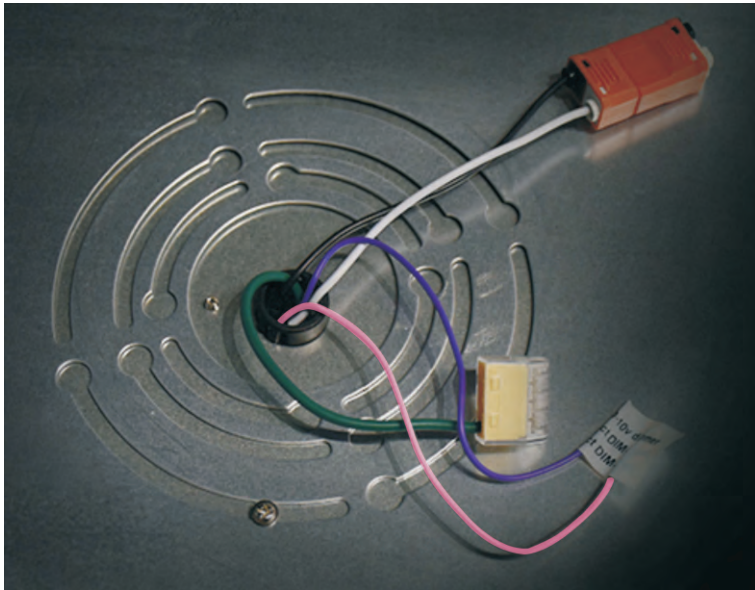
Slotted Design For Compatibility With Multiple Junction Boxes



T-grid Hook For Recessed Installation



Safety Hanging Rope For Added Security And Easier Installation

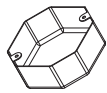


COMPATIBILITY

Internal driver and slotted design, compatible with multiple size of junction boxes



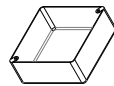
3" Octagon: 2-1/8" Deep



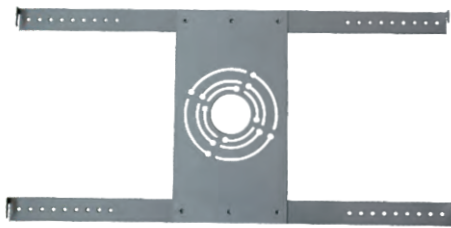
4" Octagon: 2-1/8" Deep



4" Round: 2-1/8" Deep



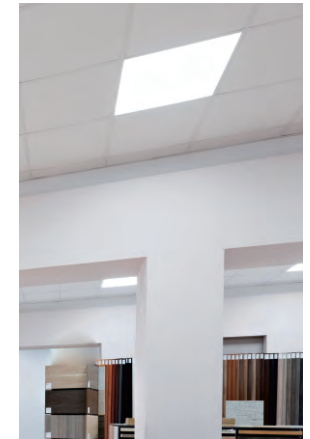
4" Square: 2-1/8" Deep



I-shaped Plate

Surface Mount

For surface mounting, a surface mount plate is used. This metal plate is equipped with screw holes for bolting to the ceiling, and 4 small static corner hooks on the mounting plate. The panel is then hooked in from below for easy installation.



OPTIONAL ACCESSORIES



Driver Box*

Recessed

The recessed option allows standard panel recessed installation utilizing a driver box. This metal box is equipped with screw holes for bolting to the panel to protect wires.



Metal Hooks

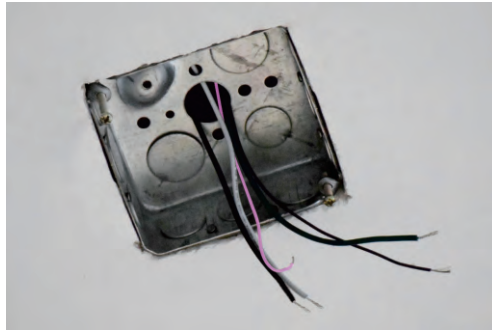
The metal hooks are used. Four metal hooks attached to the rear/top can be bent up to make it fastened.

**Available via Special Order. Call 1-800-624-4488.*

QUICK MOUNTING

Easy & Quick Surface Mounted Installation
Only 5 simple steps to complete the whole process within 10 minutes!

Step 1



Turn off power. Insert the L, N wires of the J-box into the male connector.

Step 2



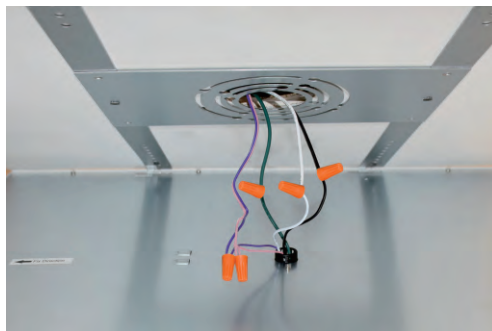
Attach Surface Mounting Kit to J-box

Step 3



Fix the hanging rope on the hook

Step 4



Connect the wire and 0-10v dimming wire if needs

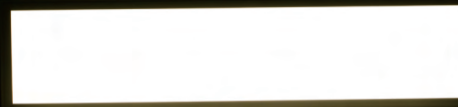
Step 5



lift panel onto remaining hooks on the surface mounting kit and slide panel until the panel locks

HIGH EFFICIENCY

Get More Savings With Utility Rebates



WIDE APPLICATIONS

1000Bulbs LED lights are highly efficient lighting solution ideal for use in commercial applications such as offices, factories, retail environments or supermarkets and more.

SURFACE MOUNTED



◀ Project: Garage
Address: Houston

Project: Kitchen
Address: San Francisco ▶



Project: Hospital
Address: Kansas City ▶



◀ Project: Office
Address: Connecticut



◀ Project: Church
Address: New Caledonia

Project: Piano Museum
Address: Raleigh, NC ▶



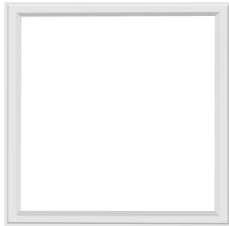
◀ Project: Community library hall

Project: Office
Address: Toronto ▶



SPECIFICATION

2'x2'



PLT-90341

Input Power

40 / 30 / 20 Watts

Luminous Flux

4400 lm / 3300lm / 2200lm

Efficacy

110 lm/w

Input Voltage

100-277V AC

CRI

Ra>80

Dimming type

0-10V Dimming

Mounting

Surface Mounted, Recessed,

Certificate

UL, DLC

Dimension

L 23.70" x W 23.70" x H 1.09"

2'x4'



PLT-90342

Input Power

50 / 40 / 30 Watts

Luminous Flux

5500 lm / 4400lm / 3300lm

Efficacy

110 lm/w

Input Voltage

100-277V AC

CRI

Ra>80

Dimming type

0-10V Dimming

Mounting

Surface Mounted, Recessed,

Certificate

UL, DLC

Dimension

L 47.70" x W 23.70" x H 1.09"

1'x4'



PLT-90343

Input Power

40 / 30 / 20 Watts

Luminous Flux

4000 lm / 3000 lm / 2000 lm

Efficacy

100 lm/w

Input Voltage

100-277V AC

CRI

Ra>80

Dimming type

0-10V Dimming

Mounting

Surface Mounted, Recessed,

Certificate

UL, DLC

Dimension

L 47.70" x W 11.70" x H 1.09"