



Product Specification

Document No.:

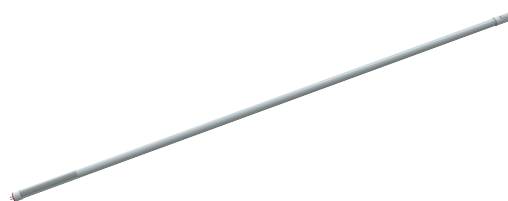
Version: A1

Page: 1/2

model no. **PLT-50317**

1. DESCRIPTION:

LAMP TYPE:	Linear T5LED
LAMP CLASSIFIED:	Type B, Single&Double Ended, Gen2
BASE TYPE:	G5 (Miniature Bi-pin)
EQUIVALENT	F54T5/HO
WATTAGE:	25W
CCT:	3000K,3500K,4000K,5000K,6500K
DIFFUSER TYPE:	Internal coated glass tube
WARRANTY:	5 YEARS



2. PRODUCT FEATURES

Replacement for conventional T5HO fluorescent lamp
 Direct wire, 120-277Vac input
 UL (R/C and Classified); DLC 5.1 Standard - PLTSPE6216
 Full glass housing; no aging, no yellowing, no bending
 Environmentally friendly: no mercury
 5 Color temperature selectable

Suitable for dry and damp locations
 Suitable for open fixtures



3. PERFORMANCE (If no specified, the test conditions in below items are: Ta=25°C±5°C, RH≤65%, air free)

3.1 Electrical Characteristics

PARAMETERS	SYMBOL	MIN	RATED	MAX	UNIT	Test Condition
Input voltage	U	--	120~277	--	V	/
Frequency	f	--	50/60	--	Hz	/
Rated system power	P	22.5	25.0	27.5	W	Vin=120,277Vac
Power factor	PF	0.873	0.9	--	/	Vin=120,277Vac
Total Harmonic Distortion	THD	--	20%	25%	/	Vin=120,277Vac
Starting time	t	--	--	1	s	Vin=120,277Vac
Flicker percent	/	--	--	--	/	/
Dimming type	/	Dim-mate				

3.2 Photometrical Characteristics

PARAMETERS	SYMBOL	MIN	RATED	MAX	UNIT	Test Condition
Beam Angle	θ	--	170	--	°	/
Flux @<4000K	Φ	2970	3300	--	LM	Vin=120,277Vac
Flux @≥4000K		3150	3500	--		
Efficacy @<4000K	η	118.8	132	--	LM/W	
Efficacy @≥4000K		126.0	140	--		

3.3 Color Characteristics (refer to ANSI C78.377-2017)

Chromaticity coordinates

CENTER POINT	CCT=3000K	X=0.4339 Y=0.4033
	CCT=3500K	X=0.4078 Y=0.3930
	CCT=4000K	X=0.3818 Y=0.3797
	CCT=5000K	X=0.3446 Y=0.3551
	CCT=6500K	X=0.3123 Y=0.3283

PARAMETER	SYMBOL	MIN	RATED	MAX	Unit	Test Condition
Color Render Index	Ra	80	82	--	/	/
R9	R9	0	--	--		
Color tolerance 3000K/6500K	/	--	--	5	SDCM	
Color tolerance 3500K/4000K/5000K	/	--	--	7	SDCM	



Product Specification

Document No.:

Version: A1

Page: 2/2

model no. **L5L1 BPMFH G2 25W A8TSE3500 4C 01**

4. LUMEN MAINTENANCE & LIFE

PARAMETERS	SYMBOL	MIN	RATED	MAX	UNIT	Test Condition
Lumen Maintenance at 6000hrs	/	--	95.8%	--	/	/
Life	t	--	50000	--	Hrs	Ta=45C, air free
Warranty	/	--	5	--	Year	Ta=45C, air free

5. OPERATION TEMPERATURE & STORAGE TEMPERATURE

PARAMETERS	SYMBOL	MIN	RATED	MAX	UNIT	Test Condition
Ambient Temperature	T _A	-20	--	45	°C	/
Storage Temperature	T _{st}	-40	--	85		/

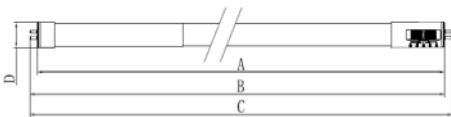
6. COMPATIBILITY

Compatible with PLT Solutions PLTS-20116 and PLTS-20117 emergency drivers.

7. APPROBATION COMPLIANCE

Comply with UL 1993, UL8750, FCC, RoHS compliance, NSF, DLC 5.1 Premium

8. DIMENSIONS

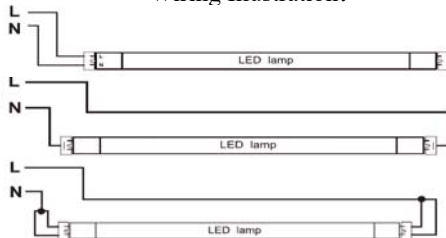


SYMBOL	MIN	TYP	MAX	UNIT
A	/	--	45.24	in
B	45.42	--	45.52	in
C	/	--	45.80	in
D	0.80	--	0.81	in

9. Connection & Wiring

WIRING DIAGRAM

Wiring Illustration:



WIRING ILLUSTRATION

/

10. Dimming Operation

Dimming Mate required for continuous dimming. Call 1-800-624-4488 for more information.

