

lampar **ARCH**

# LLSN | Vanguard

Product Data Sheet



COMMERCIAL-GRADE

LED Industrial Strips | PRO-tier

2FT | 4FT | 8FT



## Product Overview

The LLSN Vanguard-Series is designed with beauty and brains. Fit it with the dome lens for industrial low-bay applications or pair it with quadrilateral lens for proprietary optics that deliver maximum lumens and conceals the LED light source for architectural linear applications.

Designed with 3-way switchable power and 3-way CCT using dip-switches to choose between 9-variations for use in offices, schools, hospitalities and other indoor spaces.

Featuring seamless light distribution with prismatic acrylic lens that is superior to competing strip fixtures, the LLSN-series is a time-saving and cost-effective alternative to full fixture replacement.

ARCHIPELAGO luminaires and LED components has been tested by independent laboratory in accordance to IESNA LM79 and LM80. LED color temperature is warrantied to shift no more than 180K over the standard warranty period. Furthermore, the range of Correlated Color Temperature follows the guidelines of the American National Standard for Specifications for the Chromaticity of Solid State Lighting (SSL) Products, ANSI C78.377-2017.

## Product Warranty\*



7-Year Warranty



75,000 Hrs

\* Standard warranty. Extended warranty available.

## Applications



Office Space



School



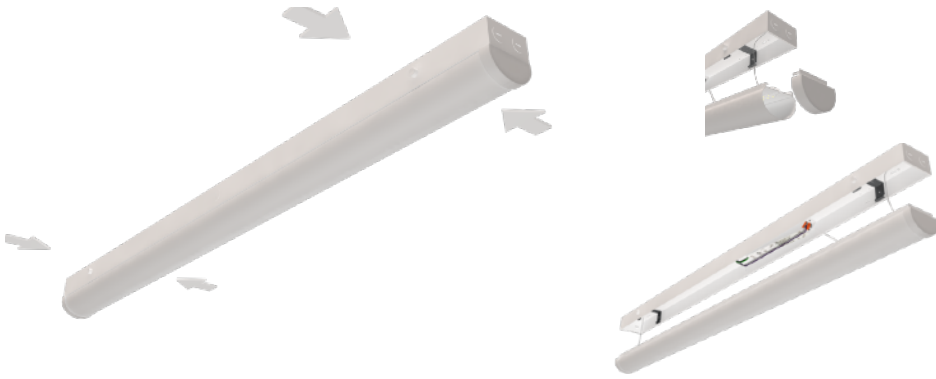
Hospitals



Commercial Buildings

## Main Features

- All-in-One Lighting Solution for Linear Strip
- Industry's Fastest Strip Installation in Minutes
- Steel Housing and Equipped w/ Heat Resistant Frosted Lens
- Universal Fit to Standard 4.25"/5.25" T8/T12 Fluorescent Strips
- Traditional Design is Suitable for Small Space Such as Stairwell
- Selectable Wattage and CCT Through Driver-Based Dip-Switches
- Easy Installation w/ Lay-In Ready and Built-In Seismic Hooks
- Microchip Programed Light-Engine for Consistent CCT
- High-Density LED Chips for Uniform Light Output
- 7-Year, 75,000Hr Warranty
- UL Damp Location Listed
- DLC Standard Listed



## Project Details

Project Name:

Fixture Schedule:

Project Number:

Notes:

## Model Specifications

Model	Length (FT)	WATTselect (W)	Lumens (LM)	Voltage (V)	CCTselect
LLSN-2FT	2FT	10W / 15W / 24W /	1,300LM / 1,950LM / 3,120LM /	120-277V	3500K / 4000K / 5000K /
LLSN-4FT	4FT	24W / 32W / 40W /	3,120LM / 4,160LM / 5,200LM /		
LLSN-8FT	8FT	40W / 52W / 64W /	5,200LM / 6,760LM / 8,320LM /		
		64W / 75W / 90W /	8,320LM / 9,750LM / 11,700LM /		

## Key Specifications

- **LED Chip:** Seoul 3528, LM80, IP-Protected
- **Lightweight Frame:** 6063 Aluminum
- **Operating Temp:** -4°F — 122°F
- **IP:** IP40 Indoor Damp Location
- **Input Voltage:** 120-277V
- **PF:** >0.9 Non-Flicker
- **Efficacy:** 130LM/W
- **Dimming:** 0-10V
- **THD:** <15%
- **CRI:** >80

## Certifications



## Ordering Guide

Model Series	WATTselect (W)	Length (FT)	CCTselect (K)	Performance	Option Codes
<b>LLSN</b> LED Linear Strip	<b>3W</b>   10W / 15W / 24W	<b>-2</b>   2FT	<b>XX</b>   CCTselect: 3500K 4000K 5000K	<b>-H</b>   High Efficacy	<b>Blank</b>   None <b>/EM08</b>   8W <b>/MSM</b>   Microwave Sensor <b>/Vplate</b>   Daisy-Chain <b>/VJBP</b>   J-Box Plate
	<b>3W</b>   24W / 32W / 40W	<b>-4</b>   4FT			
	<b>3W</b>   40W / 52W / 64W	<b>-8</b>   8FT			
	<b>3W</b>   64W / 75W / 90W		<b>-HM</b>   High Performance Max		

Ordering number example:

LLSN3W-4XX-H/EM08

Choose your model specifications:

LLSN			S3	H	
------	--	--	----	---	--

Please place dashes (-) in correct order.

Model Series

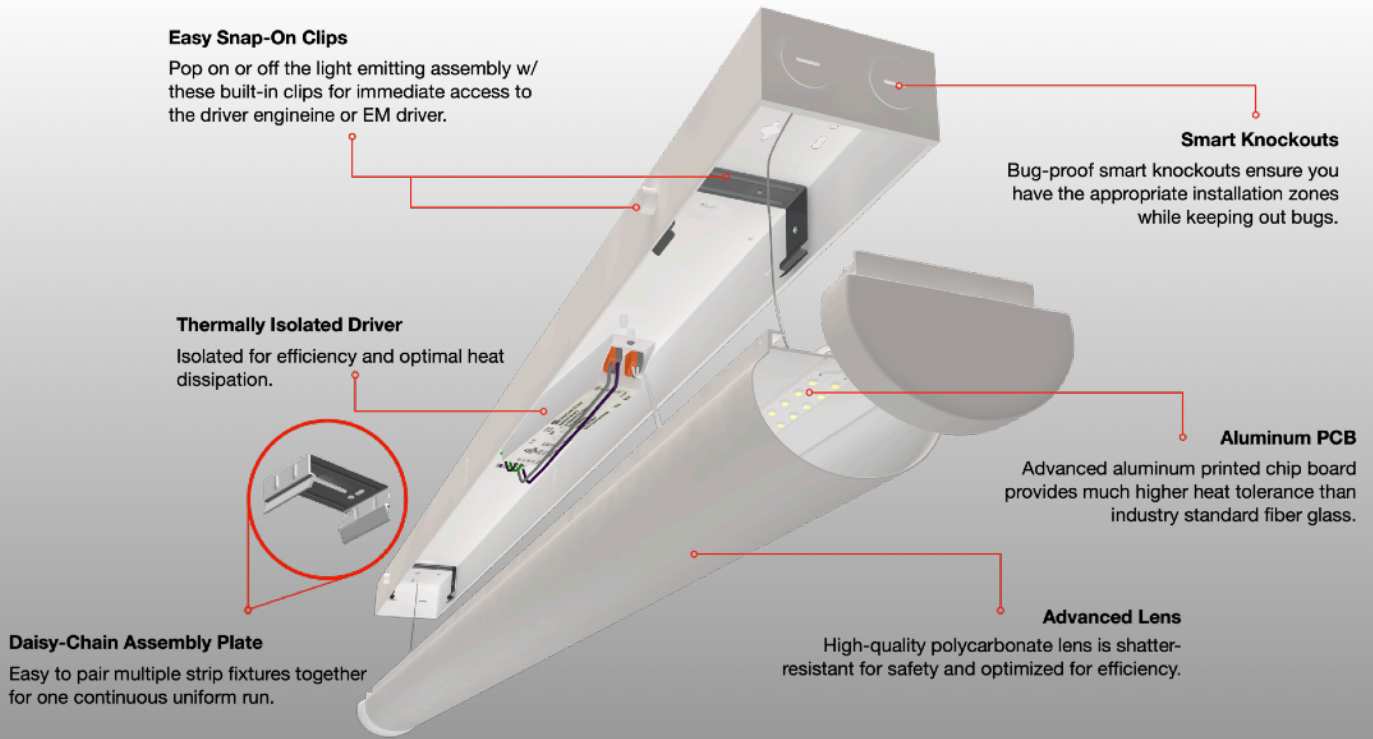
Watt

Length

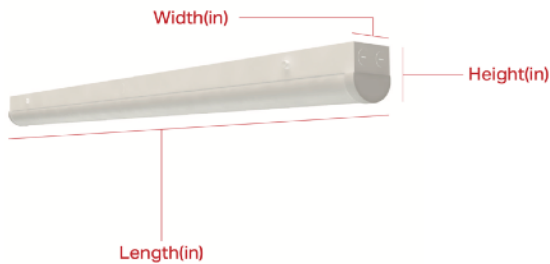
CCTselect

Performance

Option



## Sizing & Measurements



Model Series	Length (in)	Width	Height (in)	Weight (lb)
LLSN-2FT	23.97	2.95	3.26	2.40
LLSN-4FT	48.03	2.95	3.26	3.75
LLSN-8FT	95.98	2.95	3.26	7.2

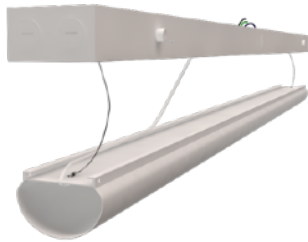
## DLC Model Guide

Product ID	Length	DLC	Watt	Lumen	Efficacy	THD	PF	CCT	CRI	Voltage
<b>S-SIPQA3</b>	2FT	Standard	20	2,695	132.1	13.7	0.9	3500	82	120 - 277Vac
<b>S-TP20L3</b>	4FT	Premium	40	5,421	134.1	10.1	0.9	3500	82	120 - 277Vac
<b>S-1CMLRV</b>	8FT	Premium	64	8,548	134.4	11.4	0.9	3500	82	120 - 277Vac

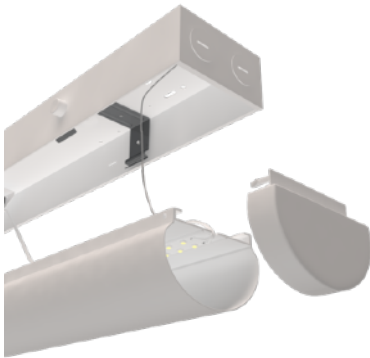
## Upgrade, Easily



Suspension Mount

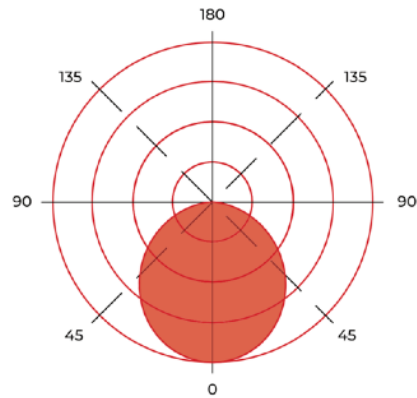


Surface Mount



Daisy-Chained

## Photometric



### General












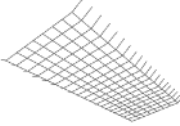
Beam Angle: 90°  
Spacing Criterion:  
1.10

## blueARCH → enABLED



SIG-qualified Bluetooth Mesh lighting control solution. Technology by SILVAIR.

## Compatible Accessories

Category	Model No.			Sub-Assembly & Compatible Controllers
<b>480V Stepdown Transformer</b>		SDT-HTO/325		
<b>EM Driver</b>		EM08-CMB/48 2FT, 4FT Compliant	EM08-CMB/150 8FT Compliant	
<b>Mount / J-Box Plate</b>		LLSN-V/JBP		
<b>Mount / Daisy-Connect Plate</b>		LLSN-V/Plate		
<b>Sensor / NLC Compliant Sensor</b>		MSM-HTI/126/NLC		blue <i>ARCH</i> <sup>TM</sup> Controls Technology by SILVAIR 
<b>Sensor / Bi-Level Sensor</b>		MSM-HTI/126/BLS		RM-HT/05S Controller 
<b>Wire / Cord Extended Length / 6FT</b>		91603 92056 92065		
<b>Wire / Electrical Whip</b>				
<b>Wire / Plug / NEMA L7-15P</b>				
<b>Wire Guard</b>		LLSN-V/WG2	LLSN-V/WG4	LLSN-V/WG8