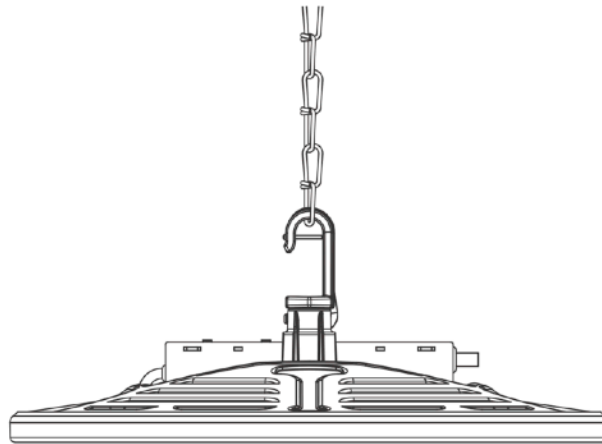


## Icarus-II Series



**Ordering Codes:**  
 LRHB3W-S4-UA30R  
 LRHB3W-S4-UA35R

**⚠ Please read all the instructions before attempting installation**

**Warning:**

- Be certain electrical power is OFF before and during installation and maintenance.
- UFO High Bay luminaire must be connected to a wiring system with an equipment-grounded conductor.
- Make sure the supply voltage is same as the rated luminaire voltage.
- To prevent wiring damage or abrasion, do not expose wiring to edges of sheet metal or sharp objects.
- **CONSULT A QUALIFIED ELECTRICIAN TO ENSURE CORRECT BRANCH CIRCUIT CONDUCTOR**
- The device complies with part 15 of the FCC Rules. Operation is subject to the following two conditions. (1) This device may not cause harmful interference, and (2) this device must accept any interference received, including interference that may cause undesired operation.

**◉ Installation Methods**

**WHAT'S INSIDE THE PACKAGE?**

Hook (x1)  
 Safety rope (x1)

**TOOLS FOR INSTALLATION**

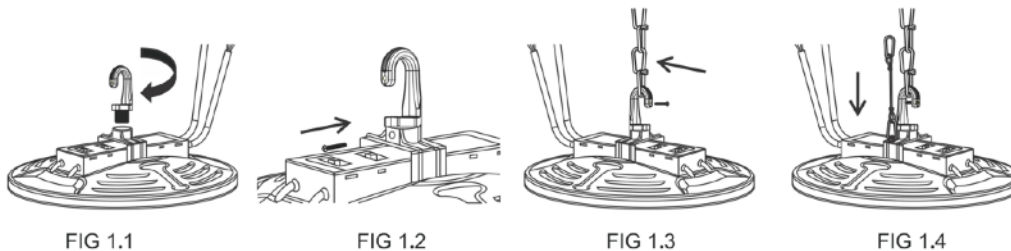


**Accessories installation**

This product can be installed with pendant mount installation, surface mount installation, pole mount installation and lampshade and other installation accessories.

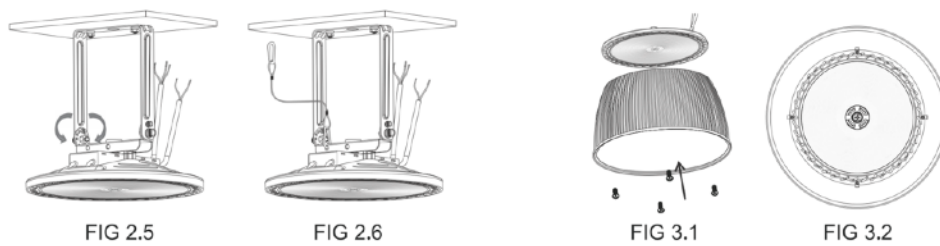
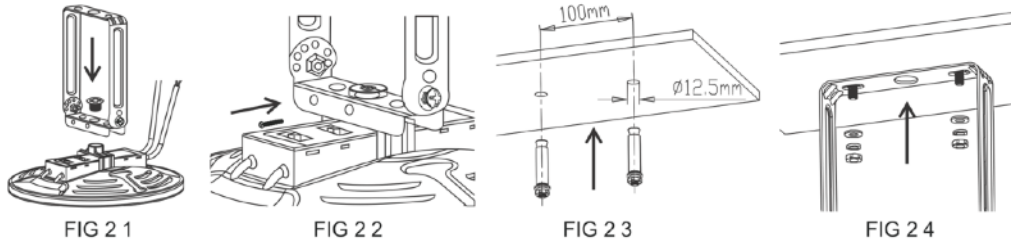
**A. Pendant mount installation (Standard version, chains excluded)**

1. Screw in the hook first (FIG 1.1), then tighten the side lock screw (FIG 1.2);
2. Hang on the sling, then lock in the screw (FIG 1.3)
3. One end of the safety rope is buckled into the lamp structure, and the other end is installed on the corresponding ceiling structure (FIG 1.4);
4. Connect the wires to the grid;
5. Select the property power and CCT according to the switch on the housing after well connect the wire;



**B. Surface mount installation (require bracket sold separately)**

1. Use 1/2 NPS screws to lock the ceiling bracket and lamps (FIG 2.1), then tighten the side lock screw (FIG 2.2);
2. First drill holes in the ceiling with a distance of 100mm and a hole diameter of 12.5mm, and then knock in the expansion screws (FIG 2.3);
3. Install the ceiling bracket into the expansion screw corresponding to the hole position, then insert the flat washer and the spring washer, and lock the nut (FIG 2.4);
4. Adjust the bracket to the required angle (30° for each hold), and tighten the screws (FIG 2.5);
5. One end of the safety rope is buckled into the corresponding hole of the ceiling bracket, and the other end is installed on the corresponding ceiling structure (FIG 2.6);
6. Connect the wires to the grid.
7. Select the property power and CCT according to the switch on the housing after well connect the wire.



**C. PC Refractor Mounting**

1. PC refractor with 60° and 90° beam angles;
2. Four screws lock the lampshade to the lamp (FIG 3.1 and FIG 3.2);

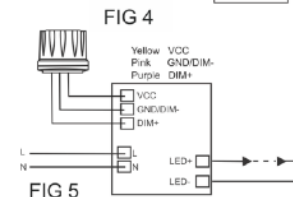
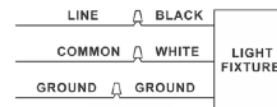
Wiring Diagrams

**Lamp Wiring**

Make wire connections with wire nuts (FIG 4)  
 Connect the internal pole cable with the luminaire cable. The common line is connected to the white wire. The ground line is connected to ground (green wire), and the live line is connected to the black wire.

**Sensor Wiring**

1. The wiring method of the sensor socket; the DIM+ wire is connected to the purple wire. The DIM- wire is connected to the pink wire. And the VCC wire is connected to the yellow wire (FIG 5);
2. Sensor model: HAISEN HD07V and LONGJOIN JL-700S;
3. Sensors installation method: screw in



Functional Performance

Select Power (W) and Color Temperature (CCT) by sliding respective switch to the desired value. One model No, with 12 different options.

Model Number	Input Voltage (V)	Power (W)	Lumens (L-M-H) (lm)	CCT (K)	Size (Inch)
LRHB3W-S4-UA30R	120-277	80-110-150	12000-15000-21000	3000-3500-4000-5000	Ø 12.13 x H3.15
LRHB3W-S4-UA35R		165-190-220	24000-27000-30000		Ø 14.09 x H3.15