



COLOR SELECTABLE LED SECURITY FLOODLIGHT W/ MOTION SENSOR & PHOTOCELL

WARNING, CAUTION, SAFETY AND INSTALLATION INSTRUCTIONS

WARNING

- Installation, service, and maintenance of luminaries should be performed by a qualified licensed electrician.
- To ensure proper usage of the fixture, carefully read and keep this instruction sheet for future reference.

CAUTION

- Make sure fixture is grounded per National Electric Code (NEC).

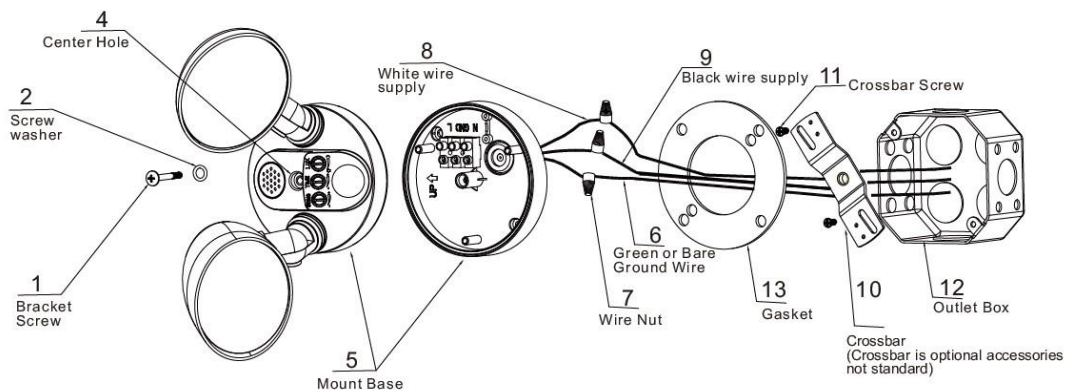
NOTICE

- To prevent the possibility of electrical shock, the use of rubber sole shoes is recommended.

Installation Instructions

Assembly and Installation

1. Tools required: screwdriver, adjustable wrench, wire nuts, electrical tape, and silicone caulk.
2. Exercise care when handling the fixture. To prevent the possibility of electrical shock, it is recommended to use rubber sole shoes.
3. Carefully unpack and check contents of the box to be sure everything is included.
4. Turn OFF power at circuit breaker box.
5. Electrical connections: Make sure supply wires and ground wires of fixtures go through the gasket (13). Connect the two ground wires together before connecting the two white neutral wires together (8) and the two 120-277V black wires together (9). Use wire nuts (7) for these connections. Push the connected wires back into the electrical box. Position the fixture to a 3.5" outlet box (12). If using a 3" box, a crossbar (not supplied) (10) will be needed.
6. Locate the CCT Switch on the back side of the Mount Base to which the fixture heads are attached. Set the CCT Switch to your desired CCT setting.
7. Install the bracket screw (1) into the center hole of the fixture back mount base (5). Align the fixture over the J-box with gasket (13). Secure the unit to the cross bar by tightening the center basket screw (1).
8. Place the fixture so the connecting screw protrudes out the hole. Make sure the fixture is oriented right side up so that the words on the knobs can be read. Place a small bead of silicone caulk between the fixture and the mounting surface. Tighten the fixture to the wall. If the fixture is not tight against the wall, adjust the two nuts on the connecting screw.
9. Turn on the electricity at the fuse or circuit breaker.

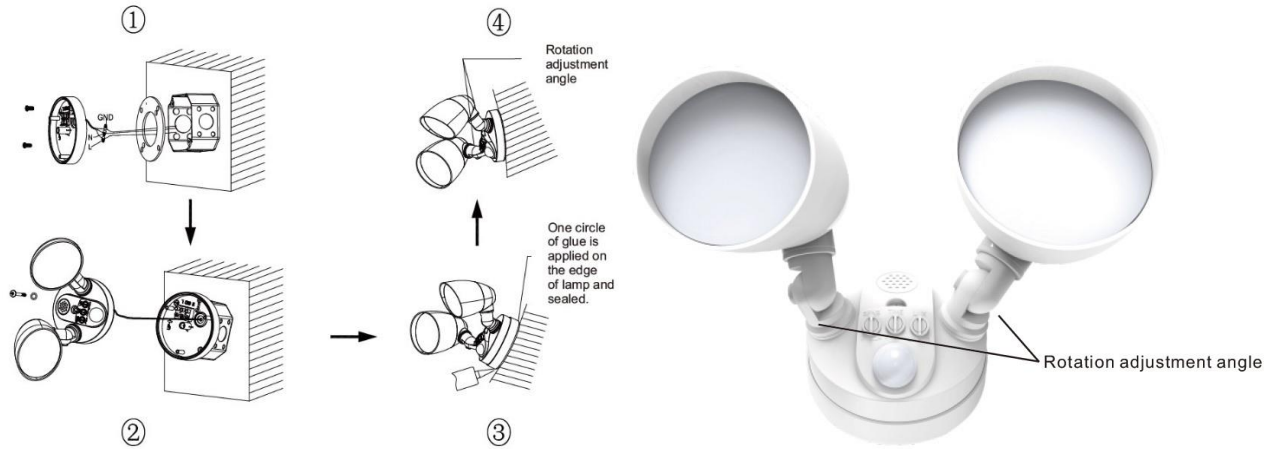




COLOR SELECTABLE LED SECURITY FLOODLIGHT W/ MOTION SENSOR & PHOTOCELL

WARNING, CAUTION, SAFETY AND INSTALLATION INSTRUCTIONS

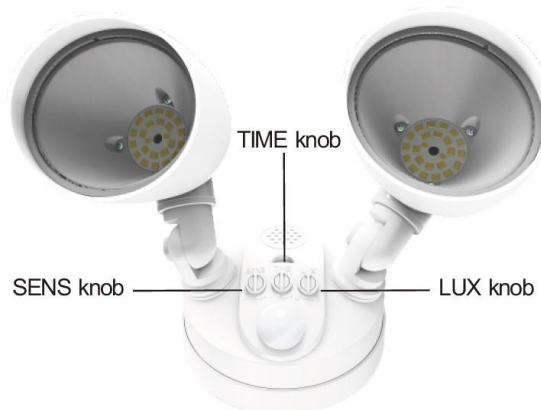
Installation Method



Setting the Motion Sensor

After installing your motion sensor light, you are ready to set/aim the motion sensor. Make sure the wall switch is in the on position.

1. SENS knob
 - Set the sensing range from 3'3" to 32'3".
2. TIME knob
 - The light will come on immediately after sensing an object. The light will remain on after that object is no longer sensed.
 - Select the time delay from 2 seconds to 10 minutes.
3. LUX knob
 - Set the light level from 10 to 300 lux (1 to 30 footcandles).
 - The security light will turn on when the ambient light on the sensor face reaches the selected light level. For example, if the Lux knob is set to the 30 footcandle maximum position, the security light will turn on when the fading evening light reaches 30 footcandles AND someone triggers the motion sensor. In the brightening morning light, the security light will stay off when someone walks by when the ambient light exceeds 30 footcandles.





COLOR SELECTABLE LED SECURITY FLOODLIGHT W/ MOTION SENSOR & PHOTOCELL

WARNING, CAUTION, SAFETY AND INSTALLATION INSTRUCTIONS

⚠ WARNING

- Before installing, servicing, or performing routine maintenance upon this equipment, follow these general precautions.
- To reduce the risk of death, personal injury, or property damage from fire, electric shock, falling parts, cuts/abrasions, and other hazards, read all warnings and instructions included with and on the fixture box and all fixture labels.
- Proper grounding is required to ensure safety.
- Power must be turned off at the breaker before installation or maintenance.
- This product must be installed in accordance with the applicable installation code by a person familiar with the construction and operation of the product and the hazards involved.
- Wear gloves and eye protection at all times while installing, servicing, or performing maintenance on the luminaire, and avoid direct eye exposure to the light source while it is on.
- To prevent wiring damage or abrasion, do not expose wiring to edges of sheet metal or other sharp objects.
- Do not install damaged product. Inspect luminaire for damage that may have occurred during transit. If damaged, contact the manufacturer immediately.
- These instructions do not purport to cover all details or variations in equipment nor to provide every possible contingency to meet in connection with installation, operation, or maintenance. Should further information be desired or should particular problems arise which are not covered sufficiently for the purchaser's or owner's purposes, contact the manufacturer.

⚠ ADVERTENCIA

- Antes de instalar, reparar o realizar el mantenimiento de rutina de este equipo, siga estas precauciones generales.
- Para reducir el riesgo de muerte, lesiones personales o daños a la propiedad por fuego, descarga eléctrica, caída de piezas, cortes / abrasiones y otros peligros, lea todas las advertencias y instrucciones incluidas con y en la caja del dispositivo y todas las etiquetas del dispositivo.
- Se requiere una conexión a tierra adecuada para garantizar la seguridad.
- Se debe apagar la energía en el disyuntor antes de la instalación o el mantenimiento.
- Este producto debe ser instalado de acuerdo con el código de instalación aplicable por una persona familiarizada con la construcción y operación del producto y los peligros involucrados.
- Utilice guantes y protección para los ojos en todo momento durante la instalación, el servicio o el mantenimiento de la luminaria, y evite la exposición directa de los ojos a la fuente de luz mientras está encendida.
- Para evitar daños o abrasiones en el cableado, no exponga el cableado a bordes de láminas de metal u otros objetos afilados.
- No instale un producto dañado. Inspeccione la luminaria en busca de daños que puedan haber ocurrido durante el tránsito. Si está dañado, comuníquese con el fabricante de inmediato.
- Estas instrucciones no pretenden cubrir todos los detalles o variaciones en el equipo ni proporcionar todas las posibles contingencias a cumplir en relación con la instalación, operación o mantenimiento. Si desea obtener más información o si surgen problemas particulares que no están suficientemente cubiertos para los propósitos del comprador o propietario, comuníquese con el fabricante.