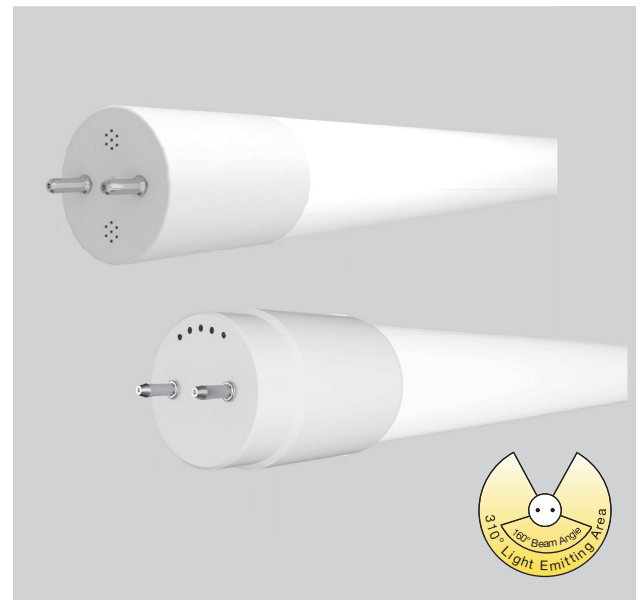


Project Name:	Type:
Part Number:	Date:

SINGLE ENDED BYPASS T8

FEATURES

- T8 tube 2' / 3' / 4' / Ubent
- CCT: 3000K, 3500K, 4000K, 5000K
- Ultra high efficacy version up to 167lm/W available
- Built-in universal voltage driver, operates on 120-277V line input
- Opaque glass provides glare free, even lighting with a 310° light emitting area
- Suitable for damp locations and totally enclosed fixtures
- NSF (National Sanitation Foundation) certified for Food Zone (Non-Contact), Splash, and Non-Food Zones
- Fixture operating temperature: -4°F to 95°F (-20°C to 35°C)
- Lamp ambient temperature: -4°F to 113°F (-20°C to 45°C)
- Rated lifetime(L70) up to: 60,000hrs
- 5 year limited warranty* / 10 year available
(see EXTENDED WARRANTIES table for information)



050923



SPECIFICATIONS

Product	Model	Nominal Length	Equiv.	Input Voltage	Life (hrs)	Wattage	Lumens	CCT	CRI	Efficacy (LPW)	Power Factor	THD	Beam Angle	DLC / NSF
36961	8T8/2F/830/BYP/RC	2'	17W	120-277V	60,000	8	1,000	3000K	82	125	0.9	<20%	160°	√/√
36962	8T8/2F/835/BYP/RC	2'	17W	120-277V	60,000	8	1,000	3500K	82	125	0.9	<20%	160°	√/√
36963	8T8/2F/840/BYP/RC	2'	17W	120-277V	60,000	8	1,050	4000K	82	131	0.9	<20%	160°	√/√
36964	8T8/2F/850/BYP/RC	2'	17W	120-277V	60,000	8	1,050	5000K	82	131	0.9	<20%	160°	√/√
36965	12T8/3F/830/BYP/RC	3'	25W	120-277V	60,000	12	1,500	3000K	82	125	0.9	<20%	160°	√/√
36966	12T8/3F/835/BYP/RC	3'	25W	120-277V	60,000	12	1,500	3500K	82	125	0.9	<20%	160°	√/√
36967	12T8/3F/840/BYP/RC	3'	25W	120-277V	60,000	12	1,550	4000K	82	129	0.9	<20%	160°	√/√
36968	12T8/3F/850/BYP/R	3'	25W	120-277V	60,000	12	1,550	5000K	82	129	0.9	<20%	160°	√/√
98379	10.5T8/4F/830/BYP	4'	32W	120-277V	60,000	10.5	1,650	3000K	82	157	0.9	<20%	160°	√/√
98380	10.5T8/4F/835/BYP	4'	32W	120-277V	60,000	10.5	1,650	3500K	82	157	0.9	<20%	160°	√/√
98381	10.5T8/4F/840/BYP	4'	32W	120-277V	60,000	10.5	1,750	4000K	82	167	0.9	<20%	160°	√/√
98382	10.5T8/4F/850/BYP	4'	32W	120-277V	60,000	10.5	1,750	5000K	82	167	0.9	<20%	160°	√/√
36969	13T8/4F/830/BYP/RC	4'	32W	120-277V	60,000	13	1,700	3000K	82	131	0.9	<20%	160°	√/√
36970	13T8/4F/835/BYP/RC	4'	32W	120-277V	60,000	13	1,700	3500K	82	131	0.9	<20%	160°	√/√
36971	13T8/4F/840/BYP/RC	4'	32W	120-277V	60,000	13	1,750	4000K	82	134	0.9	<20%	160°	√/√
36972	13T8/4F/850/BYP/RC	4'	32W	120-277V	60,000	13	1,750	5000K	82	134	0.9	<20%	160°	√/√
98476	14.5T8/4F/835/BYP	4'	32W	120-277V	60,000	14.5	2,100	3500K	82	145	0.9	<20%	160°	√/√
98473	14.5T8/4F/840/BYP	4'	32W	120-277V	60,000	14.5	2,200	4000K	82	152	0.9	<20%	160°	√/√
98474	14.5T8/4F/850/BYP	4'	32W	120-277V	60,000	14.5	2,200	5000K	82	152	0.9	<20%	160°	√/√
36973	16T8/4F/840/BYP/RC	4'	32W	120-277V	60,000	16	2,100	4000K	82	131	0.9	<20%	160°	√/√
36974	16T8/4F/850/BYP/RC	4'	32W	120-277V	60,000	16	2,100	5000K	82	131	0.9	<20%	160°	√/√
36975	20.5T8/4F/840/BYP/R	4'	40W**	120-277V	60,000	20.5	2,950	4000K	82	141	0.9	<20%	160°	√/√
36976	20.5T8/4F/850/BYP/R	4'	40W**	120-277V	60,000	20.5	2,950	5000K	82	141	0.9	<20%	160°	√/√
98162	17T8U6/830/BYP/R	U-6	32W	120-277V	60,000	17	2,100	3000K	82	124	0.9	<20%	160°	√/ N.A.
35460	17T8U6/835/BYP/R	U-6	32W	120-277V	60,000	17	2,100	3500K	82	124	0.9	<20%	160°	√/ N.A.
98163	17T8U6/840/BYP/R	U-6	32W	120-277V	60,000	17	2,300	4000K	82	135	0.9	<20%	160°	√/ N.A.
98164	17T8U6/850/BYP/R	U-6	32W	120-277V	60,000	17	2,300	5000K	82	135	0.9	<20%	160°	√/ N.A.

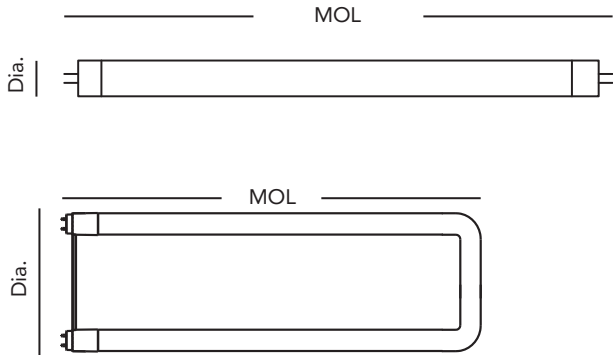
* Please visit www.greencreative.com for Limited Warranty terms.

** Replace 40W T10/T12 lamps or 32W T8 lamps.



SINGLE ENDED BYPASS T8

DIMENSION & WEIGHT



Model	Base	MOL	Dia.	Weight
8T8/2F/8xx/BYP/RC	G13	23-3/4"	1.0"	0.24lb
12T8/3F/8xx/BYP/RC	G13	35-3/4"	1.0"	0.32lb
10.5T8/4F/8xx/BYP	G13	47-13/16"	1.0"	0.57lb
13T8/4F/8xx/BYP/RC	G13	47-13/16"	1.0"	0.47lb
14.5T8/4F/8xx/BYP	G13	47-13/16"	1.0"	0.57lb
16T8/4F/8xx/BYP/RC	G13	47-13/16"	1.0"	0.47lb
20.5T8/4F/8xx/BYP/R	G13	47-13/16"	1.0"	0.53lb
17T8U6/8xx/BYP/R	G13	22-7/16"	7-1/16"	0.53lb

Where xxx means 824-965 which indicates CRI and color temperature

INSTALLATION

Diagram A – Non-Shunted

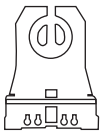
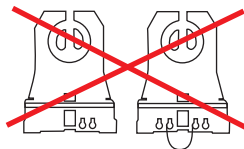
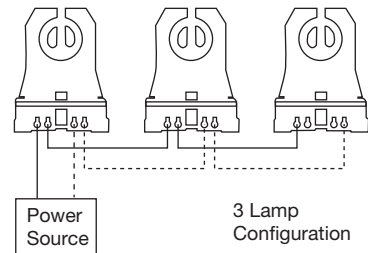


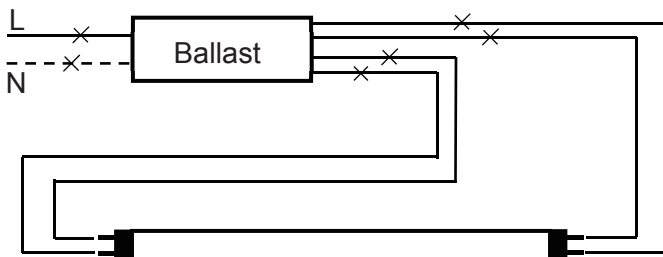
Diagram B – Shunted



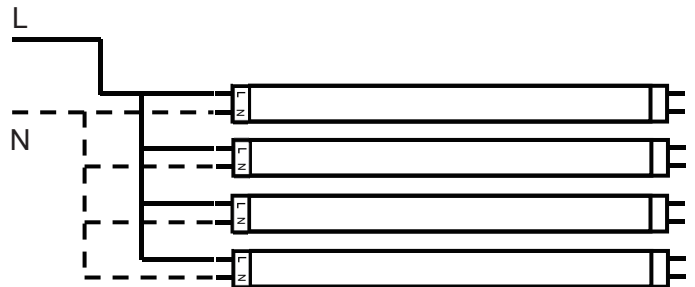
This lamp is compatible with non-shunted lamp holder ONLY.



TUBE



Step 1. Cut all wires connected to the existing ballast, remove the ballast.



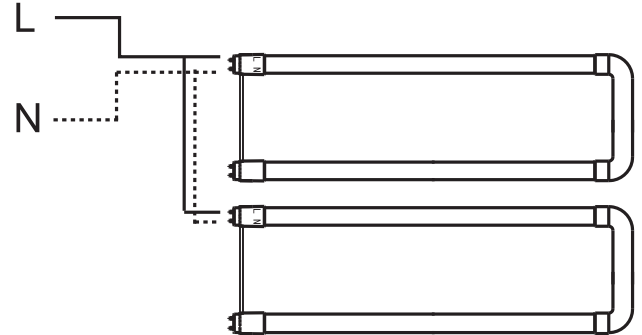
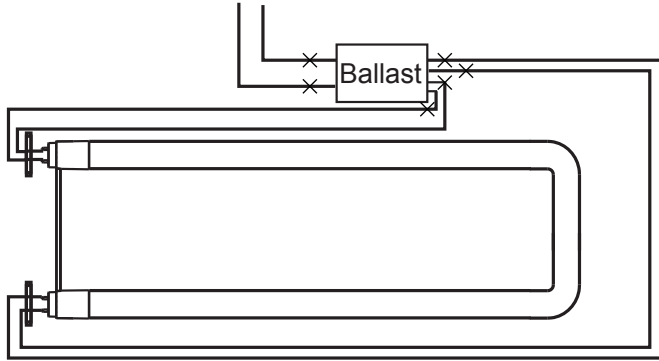
Step 2. If shunted lamp holders are used in the existing fixture, replace them with non-shunted holders first. Wire the holders and lamps according to the diagram.



SINGLE ENDED BYPASS T8

INSTALLATION

U-BENT



ACCESSORY ORDERING INFORMATION

Product	Model	Description	Pictures	Dimensions
98003	23EMDRIVER	California Title 20 Compliant 23W Emergency LED Driver (Field Installation)		
58012	35EMINVERTER***	35W Emergency Inverter (Field Installation)		
58013	35EMINVERTER/CEC	California Title 20 Compliant 35W Emergency Inverter (Field Installation)		

***Does not meet Title 20 appliance requirements, not for use in California

EXTENDED WARRANTIES****

Model	Description*****
8T8/2F/BYP/10YEARWARRANTY	10 Year warranty for 8T8/2F/8xx/BYP/yy
12T8/3F/BYP/10YEARWARRANTY	10 Year warranty for 12T8/3F/8xx/BYP/yy
10.5T8/4F/BYP/10YEARWARRANTY	10 Year warranty for 10.5T8/4F/8xx/BYP/yy
13T8/4F/BYP/10YEARWARRANTY	10 Year warranty for 13T8/4F/8xx/BYP/yy
14.5T8/4F/BYP/10YEARWARRANTY	10 Year warranty for 14.5T8/4F/8xx/BYP/yy
16T8/4F/BYP/10YEARWARRANTY	10 Year warranty for 16T8/4F/8xx/BYP/yy
20.5T8/4F/BYP/10YEARWARRANTY	10 Year warranty for 20.5T8/4F/8xx/BYP/yy
17T8/U6/BYP/10YEARWARRANTY	10 Year warranty for 17T8U6/8xx/BYP/yy

**** Warranty based on a maximum of 4,368 annual operating hours (per year for ten years) and exposure to a maximum fixture operating temperature of 80°F / 27°C.

***** xx – Refers to the CCT yy – Refers to model generations within the same nominal performance. Typically blank, 'R', or 'RC'



SINGLE ENDED BYPASS T8

CERTIFICATION INFORMATION

Product	Model	DLC ID#
98379	10.5T8/4F/830/BYP	PLQIQC0PLP7P
98380	10.5T8/4F/835/BYP	PLM4U8W5M90Z
98381	10.5T8/4F/840/BYP	PL299HA1S71O
98382	10.5T8/4F/850/BYP	PL00PTXQ2MZM
98476	14.5T8/4F/835/BYP	PLOM0T0BMPO6
98473	14.5T8/4F/840/BYP	PLHPIVUMTFJH
98474	14.5T8/4F/850/BYP	PLUKSTKW1NC6
98162	17T8U6/830/BYP/R	PL0K2H4PRESH
35460	17T8U6/835/BYP/R	PLD92RAO4HH7
98163	17T8U6/840/BYP/R	PLDUCDLE7QGO
98164	17T8U6/850/BYP/R	PL3ODG0X88EX
36965	12T8/3F/830/BYP/RC	S-FCWQ4V
36966	12T8/3F/835/BYP/RC	S-FGKDLN
36967	12T8/3F/840/BYP/RC	S-1TC8F6
36968	12T8/3F/850/BYP/R	S-YP2TBC
36969	13T8/4F/830/BYP/RC	S-FV6N7I
36970	13T8/4F/835/BYP/RC	S-AMCU60
36971	13T8/4F/840/BYP/RC	S-5KWXFI
36972	13T8/4F/850/BYP/RC	S-6OEJKX

ORDERING INFORMATION

Model	Master Carton			Shipping Carton		
	Case Qty	Case Dimensions (LxWxH)	Case Weight	Case Qty	Case Dimensions (LxWxH)	Case Weight
8T8/2F/xxx/BYP/RC	NA	NA	NA	25PCS	25-1/4" x 7-1/2" x 7-5/16"	7.4 lb
12T8/3F/xxx/BYP/RC	NA	NA	NA	25PCS	37-3/8" x 7-7/16" x 7-1/4"	10.25 lb
10.5T8/4F/xxx/BYP	NA	NA	NA	25PCS	48-13/16" x 5-15/16" x 5-15/16"	13.6 lb
13T8/4F/xxx/BYP/RC	NA	NA	NA	25PCS	49-1/8" x 7-7/16" x 7-1/8"	13.7 lb
14.5T8/4F/xxx/BYP	NA	NA	NA	25PCS	48-13/16" x 5-15/16" x 5-15/16"	13.6 lb
16T8/4F/xxx/BYP/RC	NA	NA	NA	25PCS	49-1/8" x 7-7/16" x 7-1/8"	13.7 lb
20.5T8/4F/xxx/BYP/R	NA	NA	NA	25PCS	49-1/8" x 7-7/16" x 7-1/8"	14.6 lb
17T8U6/xxx/BYP/R	NA	NA	NA	12PCS	24-7/16" x 17-1/8" x 10-5/8"	12.7 lb

Where xxx means 824-965 which indicates CRI and color temperature

Note: All rights reserved. All sizes and specifications are subject to change at any time without notice.