



# HALO<sup>®</sup>

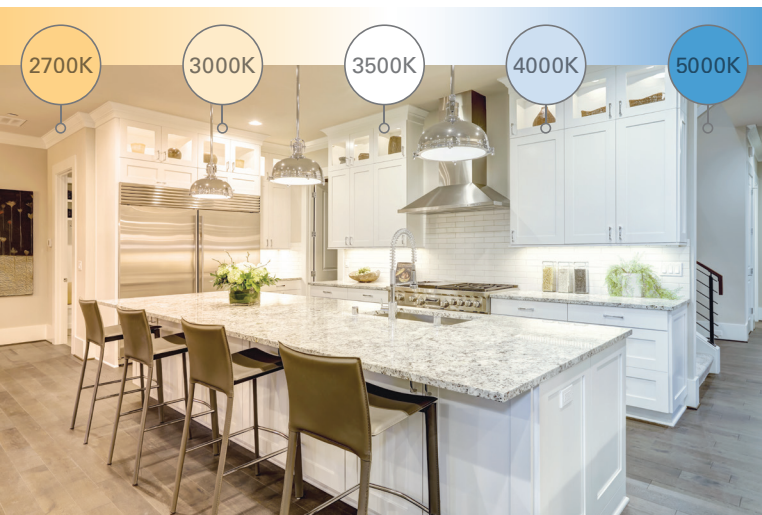
SeleCCTable™ LED  
Retrofit Collection

5  
seleCCTable™  
colors

# HALO™ SeleCCTable Family



2700K • 3000K • 3500K  
4000K • 5000K



## RL SeleCCTable Series



**RL4069S1EWH**  
4" LED Retrofit Baffle-Trim,  
600 lumen



**RL56069S1EWH / RL56099S1EWH**  
5" / 6" LED Retrofit Baffle-Trim,  
600 lumen / 900 lumen



**RL4099S1EWH**  
4" LED Retrofit Baffle-Trim,  
900 lumen



**RL56129S1EWH**  
5" / 6" LED Retrofit Baffle-Trim,  
1200 lumen

## RA SeleCCTable Series



**RA4069S1EWH**  
4" LED Adjustable Gimbal



**RA56069S1EWH**  
5" / 6" LED Adjustable Gimbal

The HALO SeleCCTable family includes the RL LED recessed downlight and RA adjustable gimbal. The SeleCCTable technology puts flexibility at your fingertips. By using the switch located on the back of the fixture, the user can choose from a range of five color temperatures 2700K - 5000K.



RL4 SeleCCTable Series

600 Lumen



900 Lumen



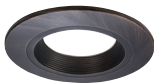
- 600 Series: up to 621 lumens<sup>1</sup>
  - 900 Series: up to 1006 lumens<sup>1</sup>
  - Use to replace 60W PAR16, 50W PAR20 or 40W R20 lamp
  - 2700K, 3000K, 3500K, 4000K, 5000K CCT<sup>2</sup> all in one
  - 90 CRI
  - 600 Series: 7.6W, 120V
  - 900 Series: 11.7W, 120V
  - L70 @ 70,000 hrs
  - HALO matte white finish
  - Push-N-Twist universal installation clips pre-installed
- Compatible with most 4" recessed housings
  - Dimmable to 5% with select dimmers
  - Damp and wet location listed (shower rated)
  - Rated for IC, ICAT and may be used in Non-IC housings
  - AIR-TITE™ certified per ASTM-E283
  - Diffusing, regressed lens
  - Five-year limited warranty

1. Lumens per selected CCT  
2. CCT - Correlated Color Temperature

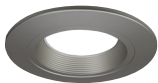
RL4 Designer Trims (Order Separately)



**RL4TRMWHB**  
White Baffle (Paintable)  
**RL4TRMWH**  
White (Paintable)



**RL4TRMTBZB**  
Tuscan Bronze Baffle  
**RL4TRMTBZ**  
Tuscan Bronze



**RL4TRMSNB**  
Satin Nickel Baffle  
**RL4TRMSN**  
Satin Nickel

OVER **\$403**<sup>A</sup>  
**SAVINGS**

<sup>A</sup> Savings are over the life of the HALO RL4 luminaire. (600 series)  
Energy savings: \$315  
Replacement lamp savings: \$88  
Savings based on \$0.128 per kilowatt hour, average six hours use per day, 70,000 hours of lamp usage, and 60W PAR16 lamp lumen equivalent.



600 Lumen

Push-N-Twist  
Universal Installation Clip

900 Lumen

Ordering Information

Sample Number: **RL4069S1EWH**  
Order HALO housing separately.

RL4 – 4" LED Retrofit Baffle - Trim

**RL4069S1EWH**= 600 lumen, 90 CRI, 2700K - 5000K CCT  
**RL4099S1EWH**= 900 lumen, 90 CRI, 2700K - 5000K CCT

LED Housings (Order Separately)

See Housing Compatibility section

Accessories (Order Separately)

Baffle

**RL4TRMSNB**=Satin Nickel Trim Ring  
**RL4TRMTBZB**=Tuscan Bronze Trim Ring  
**RL4TRMWHB**=White Paintable Trim Ring

Splay

**RL4TRMSN**=Satin Nickel Trim Ring  
**RL4TRMTBZ**=Tuscan Bronze Trim Ring  
**RL4TRMWH**=White Paintable Trim Ring



**HE26LED**  
Edison Base Adapter  
for retrofit (included)

**HE26LED**=Replacement screw base adapter (one included with unit)

RL4 Energy Data	600 Series	900 Series
Max. Lumens	621 @ 4000K	1006 @ 5000K
Input Voltage	120V	120V
Input Frequency	50/60 Hz	50/60 Hz
Input Power	7.6W	11.7W
Input Current	0.075A - 0.0875A (Per input power)	0.075A - 0.0875A (Per input power)
Power Factor	>0.90	>0.90
THD	<20%	<20%
EMI/RFI	FCC Title 47 CFR, Part 15, FCC Title 47 CFR, Part 15, Class B (Consumer)	FCC Title 47 CFR, Part 15, FCC Title 47 CFR, Part 15, Class B (Consumer)
Sound Rating	Class A	Class A
Minimum Starting Temp	-30°C (-22°F)	-30°C (-22°F)



Refer to ENERGY STAR® Certified Products List.  
Can be used to comply with California Title 24 High Efficacy requirements. Certified to California Title 20 Appliance Efficiency Database.





# RL56 SeleCCTable Series

600 Lumen  
900 Lumen



1200 Lumen



- 600 Series: up to 712 lumens<sup>1</sup>
- 900 Series: up to 1006 lumens<sup>1</sup>
- 1200 Series: up to 1272 lumens<sup>1</sup>
- 600 Series: use to replace 65W BR30 or 50W PAR30 lamp
- 900 Series: use to replace 75W PAR30 lamp
- 1200 Series: use to replace 90W BR40 lamp
- 2700K, 3000K, 3500K, 4000K, 5000K CCT<sup>2</sup> all in one
- 90 CRI
- 600 Series: 7.6W, 120V
- 900 Series: 12.1W, 120V
- 1200 Series: 14W, 120V
- L70 @ 70,000 hrs
- HALO matte white finish
- Torsion springs pre-installed
- Optional Push-N-Twist universal installation two piece clips
- Compatible with most 5" and 6" standard and shallow recessed housings
- Dimmable to 5% with select dimmers
- Damp and wet location listed (shower rated)
- Rated for IC, ICAT and may be used in Non-IC housings
- AIR-TITE™ certified per ASTM-E283
- Diffusing, regressed lens
- Five-year limited warranty

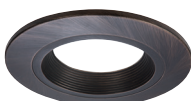
1. Lumens per selected CCT  
2. CCT - Correlated Color Temperature

## RL56 Designer Trims (Order Separately)



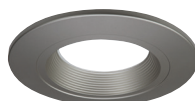
**RL56TRMWHB**  
White Baffle (Paintable)

**RL56TRMWH**  
White (Paintable)



**RL56TRMTBZB**  
Tuscan Bronze Baffle

**RL56TRMTBZ**  
Tuscan Bronze



**RL56TRMSNB**  
Satin Nickel Baffle

**RL56TRMSN**  
Satin Nickel

OVER **\$409**<sup>Δ</sup>  
SAVINGS

<sup>Δ</sup> Savings are over the life of the HALO RL56 600 Lumen luminaire.  
Energy savings: \$348  
Replacement lamp savings: \$61  
Savings based on \$0.128 per kilowatt hour, average six hours use per day, 70,000 hours of lamp usage, and 65W BR30 lamp lumen equivalent.

Torsion Springs



Example:  
RL56-600 Series



5 Inch housing position



6 Inch housing position

Push-N-Twist  
Universal Installation Clip



Example:  
RL56-600 Series



To use the Push-N-Twist clips, the torsion springs must be removed. Do not remove the main bracket.



Once the torsion springs are removed, install the friction clips and make sure to rotate the clips into position before installing into the housing.

Ordering Information

Sample Number: **RL56069S1EWH**  
Order HALO housing separately.

RL56 – 5”/6” LED Retrofit Baffle - Trim

**RL56069S1EWH**= 600 lumen 90 CRI, 2700K - 5000K CCT  
**RL56099S1EWH**= 900 lumen 90 CRI, 2700K - 5000K CCT  
**RL56129S1EWH**= 1200 lumen 90 CRI, 2700K - 5000K CCT

LED Housings (Order Separately)

See Housing Compatibility section

Accessories (Order Separately)

Baffle

**RL56TRMSNB**=Satin Nickel Trim Ring  
**RL56TRMTBZB**=Tuscan Bronze Trim Ring  
**RL56TRMWHB**=White Paintable Trim Ring

Splay

**RL56TRMSN**=Satin Nickel Trim Ring  
**RL56TRMTBZ**=Tuscan Bronze Trim Ring  
**RL56TRMWH**=White Paintable Trim Ring

**OT400P**=Oversize Flat White Metal Trim Ring, 6" I.D. x 9-1/4" O.D.  
(Ring slips behind RL56 ring in stepped configuration.)

**OT403P**=Oversize White Plastic Trim Ring, 6" I.D. x 8" O.D.  
(Ring slips behind RL56 ring in stepped configuration.)

**TRM690WH**=Oversize Matte White Metal Trim Ring. Designed for RL56 ring to inset into oversize ring for an even (non-stepped) trim surface.

**HE26LED**=Replacement screw base adapter (one included with unit)



RL56 Energy Data	600 Series	900 Series	1200 Series
Max. Lumens	712 @ 4000K	1006 @ 4000K	1272 @ 5000K
Input Voltage	120V	120V	120V
Input Frequency	50/60 Hz	50/60 Hz	50/60 Hz
Input Power	7.6W	12.1W	14W
Input Current	0.15 A	0.15 A	0.15 A
Power Factor	>0.90	>0.90	>0.90
THD	<20%	<20%	<20%
EMI/RFI	FCC Title 47 CFR, Part 15, Class B (Consumer)	FCC Title 47 CFR, Part 15, Class B (Consumer)	FCC Title 47 CFR, Part 15, Class B (Consumer)
Sound Rating	Class A	Class A	Class A
Minimum Starting Temp	-30°C (-22°F)	-30°C (-22°F)	-30°C (-22°F)

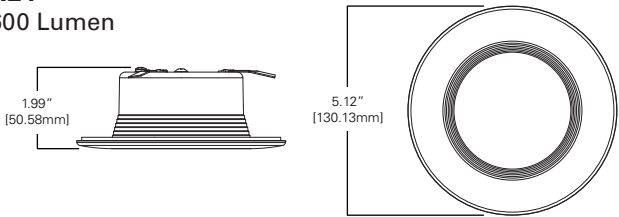


Refer to ENERGY STAR® Certified Products List.  
Can be used to comply with California Title 24 High Efficacy requirements. Certified to California Title 20 Appliance Efficiency Database.



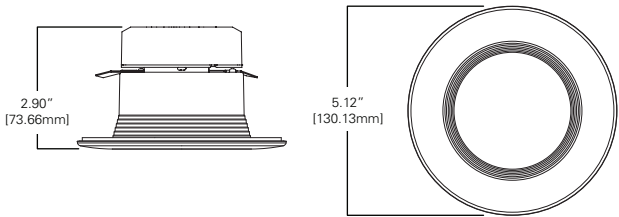
RL4

600 Lumen



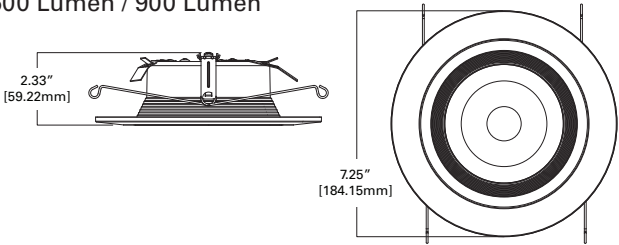
RL4

900 Lumen



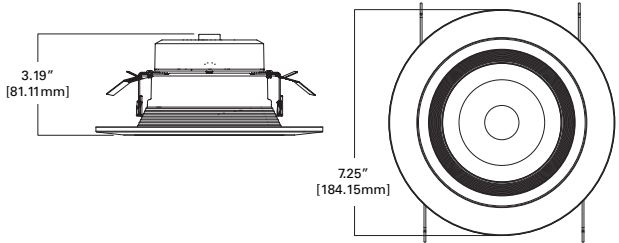
RL56

600 Lumen / 900 Lumen



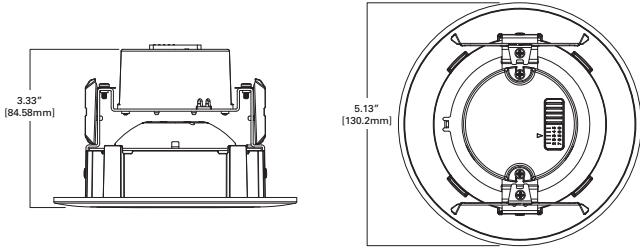
RL56

1200 Lumen





- Adjustable Gimbal for accent, task, grazing and downlighting
- 35° Tilt, up to 360° rotation
- 615 lumens @ 3000K
- Use to replace 40W R40 lamp or 60W PAR16 lamp
- 2700K, 3000K, 3500K, 4000K, 5000K CCT all in one
- 90 CRI
- 600 Series: 7.8W, 120V
- L70 @ 70,000 hrs
- HALO matte white finish
- Compatible with most 4" recessed housings
- Flexible mounting with friction blades
- Dimmable to 5% with select dimmers
- Damp location listed
- Rated for IC, ICAT and may be used in Non-IC housings
- Five-year limited warranty



UP TO

\$596<sup>A</sup>

SAVINGS

<sup>A</sup> Savings are over the life of the HALO RA4 600 Lumen luminaire.  
Energy savings: \$520  
Replacement lamp savings: \$77  
Savings based on \$0.128 per kilowatt hour, average six hours use per day, 70,000 hours of lamp usage, and 60W PAR16 lamp lumen equivalent.



Friction Blades

Ordering Information

Sample Number: **RL4069S1EWH**  
Order HALO housing separately.

RA4 – 4" LED Adjustable Gimbal

**RA4069S1EWH**= 600 lumen, 90 CRI, 2700K - 5000K CCT

LED Housings (Order Separately)

See Housing Compatibility section

Accessories (Order Separately)

**HE26LED**=Replacement screw base adapter  
(one included with unit)



**HE26LED**  
Edison Base Adapter  
for retrofit (included)

RA4 Energy Data		600 Series @ 3000K
Max. Lumens	615 @ 3000K	
Input Voltage	120V	
Input Frequency	50/60 Hz	
Input Power	7.0W	
Input Current	0.065A	
Power Factor	>0.90	
THD	<20%	
EMI/RFI	FCC Title 47 CFR, Part 15, Class B (Consumer)	
Sound Rating	Class A	
Minimum Starting Temp	-30°C (-22°F)	

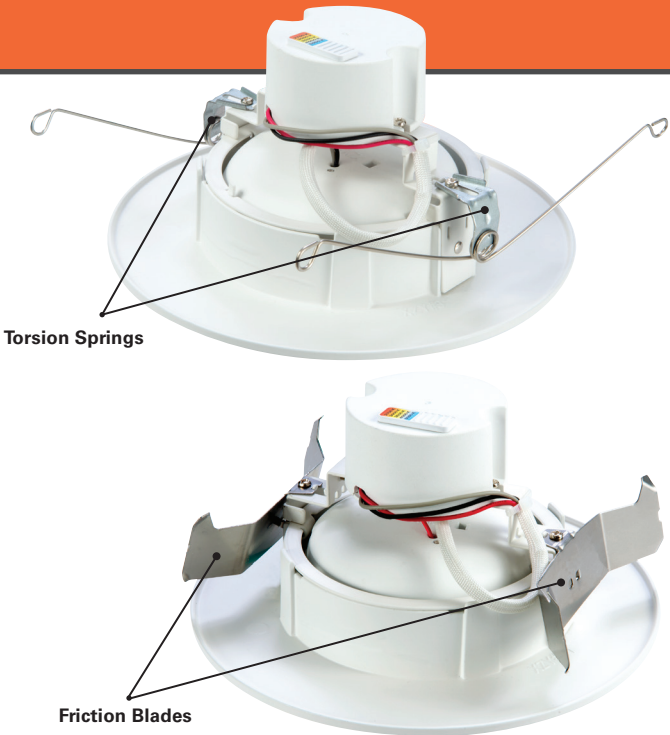
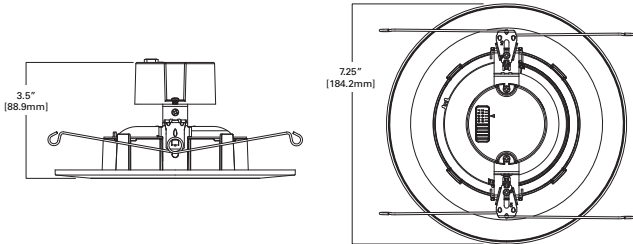


Refer to ENERGY STAR® Certified Products List.  
Can be used to comply with California Title 24 High Efficacy requirements. Certified to California Title 20 Appliance Efficiency Database.





- Adjustable Gimbal for accent, task, grazing and downlighting
- 35° Tilt, up to 360° rotation
- 630 lumens @ 3000K
- Use to replace 65W BR30 lamp
- 2700K, 3000K, 3500K, 4000K, 5000K CCT all in one
- 90 CRI
- 600 Series: 7.0W, 120V
- L70 @ 70,000 hrs
- HALO matte white finish
- Compatible with most 5" and 6" recessed housings
- Flexible mounting with friction blades and torsion springs
- Dimmable to 5% with select dimmers
- Damp location listed
- Rated for IC, ICAT and may be used in Non-IC housings
- Five-year limited warranty



Ordering Information

Sample Number: **RL4069S1EWH**  
Order HALO housing separately.  
**RA56 – 5" / 6" LED Adjustable Gimbal**  
**RA56069S1EWH**= 600 lumen, 90 CRI, 2700K - 5000K CCT

LED Housings (Order Separately)

See Housing Compatibility section

Accessories (Order Separately)

**HE26LED**—Replacement screw base adapter  
(one included with unit)



**HE26LED**  
Edison Base Adapter  
for retrofit (included)

RA56 Energy Data		600 Series
Max. Lumens	630 @ 3000K	
Input Voltage	120V	
Input Frequency	50/60 Hz	
Input Power	7.0W	
Input Current	0.065A	
Power Factor	>0.90	
THD	<20%	
EMI/RFI	FCC Title 47 CFR, Part 15, Class B (Consumer)	
Sound Rating	Class A	
Minimum Starting Temp	-30°C (-22°F)	

UP TO **\$604<sup>A</sup>**  
**SAVINGS**

<sup>A</sup> Savings are over the life of the HALO RA56 600 Lumen luminaire.  
Energy savings: \$520  
Replacement lamp savings: \$84  
Savings based on \$0.128 per kilowatt hour, average six hours use per day, 70,000 hours of lamp usage, and 65W BR30 lamp lumen equivalent.



Refer to ENERGY STAR® Certified Products List.  
Can be used to comply with California Title 24 High Efficacy requirements. Certified to California Title 20 Appliance Efficiency Database.  
**halolighting.com**



## RL4/RA4 Housing Compatibility

**RL4/RA4 SeleCCTable LED are rated for installation in 4" HALO and other housings.**

**HALO LED<sup>1</sup>** H995ICAT, H995RICAT, H245ICAT, H245RICAT

**HALO** H99ICAT, H99RTAT, H99TAT, E4ICATSB, E4TATSB, E4RTATSB

**Other Brands** The RL and RA SeleCCTable Series is UL Certified for use with any 4" diameter recessed housing constructed of steel or aluminum with an internal volume that exceeds 62.3 in<sup>3</sup> in addition to those noted above.

<sup>1</sup> HALO LED housings are non-screw base, high-efficacy code compliant.

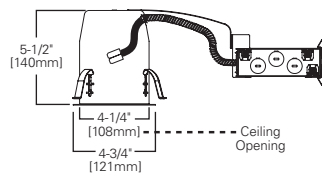
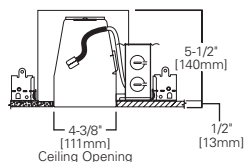
### H995ICAT

4" LED, IC, AIR-TITE,  
New Construction Housing



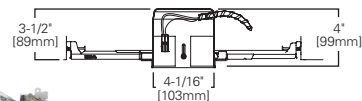
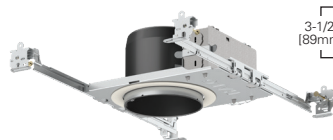
### H995RICAT

4" LED, IC, AIR-TITE,  
Remodel Housing



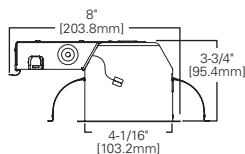
### H245ICAT

4" LED, Ultra-shallow, IC, AIR-TITE, New Construction Housing



### H245RICAT

4" LED, Ultra-shallow, IC, AIR-TITE, Remodel Housing



## RL56/RA56 Housing Compatibility

**RL56/RA56 SeleCCTable LED are rated for installation in 5" and 6" HALO and other housings.**

**HALO LED<sup>1</sup>** H550ICAT, H550RICAT, E550ICAT, E550RICAT

**HALO 6" LED<sup>1</sup>** H750ICAT, H750RICAT, H750T, H750TCP, H2750ICAT, H2750RICAT, E750ICAT, E750RICAT

**HALO 5"** H51CAT, H5RICAT, H51CATNB, H5T, H5RT, H251CAT, H251CATNB, E5TAT, E5RTAT, H5TNB, E5TATNB, E51CAT, E5RICAT, E51CATNB

**HALO 6"** H71CAT, H7RICAT, H71CT, H7RICT, H71CATNB, H71CTNB, H7T, H7RT, H7TNB, H7TCP, H7UICAT, H7UICAT, H271CAT, H271CAT, H27T, H27RT, E71CAT, E7RICAT, E271CAT, E27RICAT, E71CATNB, E7TAT, E7RTAT, E7TATNB, E27TAT, E27RTAT

**HALO LED Retrofit** ML7BXRFK, ML7E26RFK

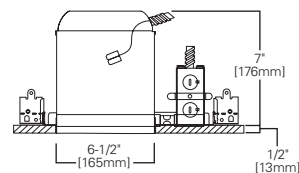
**Other Brands\*** The RL SeleCCTable Series is UL Certified for use with any 5"/6" diameter recessed housing constructed of steel or aluminum with an internal volume that exceeds 107.9 in<sup>3</sup> in addition to those noted above.

\*When using RL56/RA56 torsion springs for retrofit some housings will not have torsion spring receiver brackets –use HALO ML7RAB retrofit adapter band (order separately)

<sup>1</sup> HALO LED housings are non-screw base, high-efficacy code compliant.

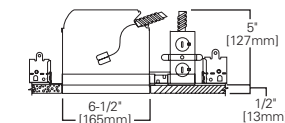
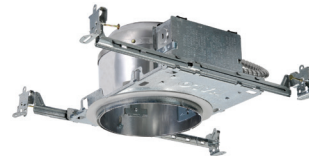
### H750ICAT

6" LED, IC, AIR-TITE, Standard  
New Construction Housing



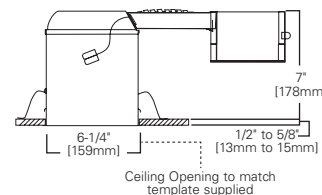
### H2750ICAT

6" LED, IC, AIR-TITE, Shallow  
New Construction Housing



### H750RICAT

6" LED, IC, AIR-TITE, Standard Remodel Housing





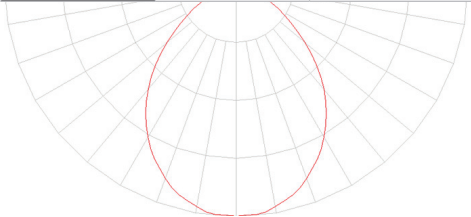
RL4069S1EWH

RL4 SeleCCTable - 600 Series



Cat No.	CRI	CCT	Lumens	Power (W)	LPW
RL4069S1EWH	91	2700K	549	7.6	72.3
	91	3000K	580	7.6	76.3
	94	3500K	610	7.6	80.3
	94	4000K	621	7.6	81.7
	92	5000K	598	7.6	78.6

RL4069S1EWH-3000K		
Luminaire lumens		575
Input watts		7.6
LER (LPW)		75.7
Spacing Criteria	0-180	1.18
	90-270	1.18
	Diagonal	1.26
Beam angle (degrees)		93.1
Field angle (degrees)		141.1
Zonal lumen	Lumens	% Lumens
0-30	203	35.3
0-40	322	56
0-60	511	88.8
0-90	575	100



\* Tested in accordance with IES LM63. Field results may vary.

Color Metric Summary

TM-30-15	R <sub>r</sub> = 91.1
	R <sub>g</sub> = 100.9
CRI/CIE	R <sub>a</sub> = 93.1
	R <sub>9</sub> = 64.9



CCT - Range of 2700K- 5000K



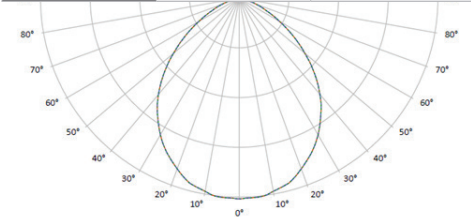
RL4099S1EWH

RL4 SeleCCTable - 900 Series



Cat No.	CRI	CCT	Lumens	Power (W)	LPW
RL4099S1EWH	92	2700K	891	11.7	76.2
	93	3000K	915	11.7	78.2
	94	3500K	951	11.7	81.2
	94	4000K	976	11.7	83.4
	91	5000K	1006	11.7	86.0

RL4099S1EWH-3000K		
Luminaire lumens		915
Input watts		11.7
LER (LPW)		78.2
Spacing Criteria	0-180	1.17
	90-270	1.17
	Diagonal	1.25
Beam angle (degrees)		93.1
Field angle (degrees)		141.1
Zonal lumen	Lumens	% Lumens
0-30	323	35.3
0-40	512	56
0-60	813	88.8
0-90	915	100



\* Tested in accordance with IES LM63. Field results may vary.

Color Metric Summary

TM-30-15	R <sub>r</sub> = 91.1
	R <sub>g</sub> = 100.9
CRI/CIE	R <sub>a</sub> = 93.1
	R <sub>9</sub> = 64.9



CCT - Range of 2700K- 5000K



\*Additional photometric ies files available online.

\*Additional photometric ies files available online.

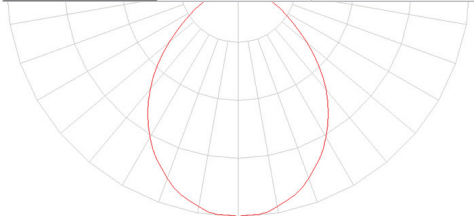
Product and Photometric Data

RL56069S1EWH  
RL56 SeleCCTable - 600 Series



Cat No.	CRI	CCT	Lumens	Power (W)	LPW
RL56069S1EWH	92	2700K	630	7.6	82.9
	92	3000K	665	7.6	87.5
	94	3500K	700	7.6	92.1
	94	4000K	712	7.6	93.6
	92	5000K	685	7.6	90.2

RL56069S1EWH-3000K		
Luminaire lumens		665
Input watts		7.6
LER (LPW)		87.5
Spacing Criteria	0-180	1.14
	90-270	1.14
	Diagonal	1.22
Beam angle (degrees)		87.8
Field angle (degrees)		139
Zonal lumen	Lumens	% Lumens
0-30	247	37.2
0-40	387	58.2
0-60	595	89.4
0-90	665	100



\* Tested in accordance with IES LM63. Field results may vary.

Color Metric Summary

TM-30-15	R <sub>f</sub> = 89.8
	R <sub>g</sub> = 98
CRI/CIE	R <sub>a</sub> = 93.7
	R <sub>9</sub> = 69.1



CCT - Range of 2700K- 5000K

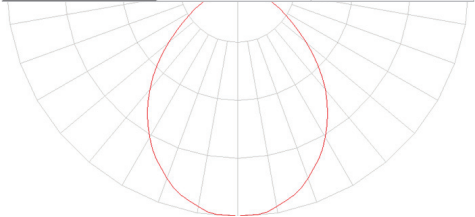


RL56099S1EWH  
RL56 SeleCCTable - 900 Series



Cat No.	CRI	CCT	Lumens	Power (W)	LPW
RL56099S1EWH	90	2700K	890	12.1	73.6
	90	3000K	940	12.1	77.7
	93	3500K	989	12.1	81.7
	93	4000K	1006	12.1	83.1
	91	5000K	969	12.1	80

RL56099S1EWH-3000K		
Luminaire lumens		940
Input watts		12.1
LER (LPW)		77.7
Spacing Criteria	0-180	1.16
	90-270	1.16
	Diagonal	1.22
Beam angle (degrees)		88.9
Field angle (degrees)		140
Zonal lumen	Lumens	% Lumens
0-30	345	36.7
0-40	541	57.5
0-60	838	89.1
0-90	940	100



\* Tested in accordance with IES LM63. Field results may vary.

Color Metric Summary

TM-30-15	R <sub>f</sub> = 89.9
	R <sub>g</sub> = 97.7
CRI/CIE	R <sub>a</sub> = 93.1
	R <sub>9</sub> = 64.6



CCT - Range of 2700K- 5000K



\*Additional photometric ies files available online.

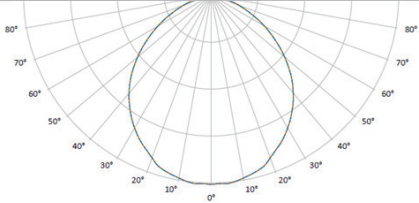
\*Additional photometric ies files available online.

RL56129S1EWH  
RL56 SeleCCTable - 1200 Series



Cat No.	CRI	CCT	Lumens	Power (W)	LPW
RL56099S1EWH	91	2700K	1205	14	86.1
	93	3000K	1221	14	87.2
	94	3500K	1227	14	87.6
	95	4000K	1249	14	89.2
	93	5000K	1272	14	90.8

RL56129S1EWH-3000K		
Luminaire lumens		1221
Input watts		14
LER (LPW)		87.2
Spacing Criteria	0-180	1.21
	90-270	1.21
	Diagonal	1.31
Beam angle (degrees)		93
Field angle (degrees)		140
Zonal lumen	Lumens	% Lumens
0-30	345	31.7
0-40	541	51.5
0-60	838	85.5
0-90	940	100



\* Tested in accordance with IES LM63. Field results may vary.

Color Metric Summary

TM-30-15	R <sub>f</sub> = 89.9
	R <sub>g</sub> = 97.7
CRI/CIE	R <sub>a</sub> = 93.1
	R <sub>9</sub> = 64.6



CCT - Range of 2700K- 5000K

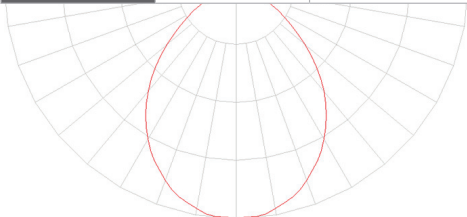


RA4069S1EWH  
RA4 SeleCCTable - 600 Series



Cat No.	CRI	CCT	Lumens	Power (W)	LPW
RA4069S1EWH	91	2700K	549	7.6	72.3
	91	3000K	580	7.6	76.3
	94	3500K	610	7.6	80.3
	94	4000K	621	7.6	81.7
	92	5000K	598	7.6	78.6

RA4069S1EWHR-3000K		
Luminaire lumens		575
Input watts		7.6
LER (LPW)		75.7
Spacing Criteria	0-180	1.18
	90-270	1.18
	Diagonal	1.26
Beam angle (degrees)		93.1
Field angle (degrees)		141.1
Zonal lumen	Lumens	% Lumens
0-30	203	35.3
0-40	322	56
0-60	511	88.8
0-90	575	100



\* Tested in accordance with IES LM63. Field results may vary.

Color Metric Summary

TM-30-15	R <sub>f</sub> = 90
	R <sub>g</sub> = 98
CRI/CIE	R <sub>a</sub> = 95
	R <sub>9</sub> = 77



CCT - Range of 2700K- 5000K



\*Additional photometric ies files available online.

\*Additional photometric ies files available online.

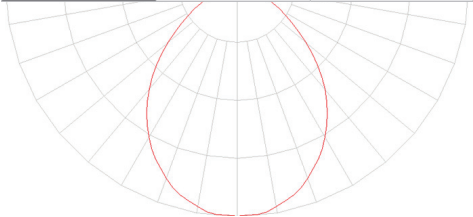
Product and Photometric Data

R564069S1EWH  
RA56 SeleCCTable - 600 Series



Cat No.	CRI	CCT	Lumens	Power (W)	LPW
RA56069S1EWH	92	2700K	630	7.6	82.9
	92	3000K	665	7.6	87.5
	94	3500K	700	7.6	92.1
	94	4000K	712	7.6	93.6
	92	5000K	685	7.6	90.2

RA56069S1EWH-3000K		
Luminaire lumens		665
Input watts		7.6
LER (LPW)		87.5
Spacing Criteria	0-180	1.14
	90-270	1.14
	Diagonal	1.22
Beam angle (degrees)		87.8
Field angle (degrees)		139
Zonal lumen	Lumens	% Lumens
0-30	247	37.2
0-40	387	58.2
0-60	595	89.4
0-90	665	100



\* Tested in accordance with IES LM63. Field results may vary.

Color Metric Summary

TM-30-15	R <sub>f</sub> = 90
	R <sub>g</sub> = 98
CRI/CIE	R <sub>a</sub> = 95
	R <sub>9</sub> = 77



CCT - Range of 2700K- 5000K



- Downlight distribution
- Maximum spacing criteria
- Optimized design for general downlighting
- Exceeds 86% of light between 0-60° cone-of-light zone
- ENERGY STAR® and California Title 24 - zonal and efficacy requirements





## Cooper Lighting Solutions

1121 Highway 74 South  
Peachtree City, GA 30269  
P: 770-486-4800  
[www.cooperlighting.com](http://www.cooperlighting.com)

Canada Sales  
5925 McLaughlin Road  
Mississauga, Ontario L5R 1B8  
P: 905-501-3000  
F: 905-501-3172

## Lighting Brands

Ametrix  
AtLite  
Corelite  
Ephesus  
Fail-Safe  
HALO  
HALO Commercial  
Invue  
iO  
Iris  
Lumark  
Lumière  
McGraw-Edison  
Metalux  
MWS  
Neo-Ray  
Portfolio  
PrentaLux - 3D Printed  
Lighting  
RSA  
Shaper  
Streetworks  
Sure-Lites  
Telensa

## Controls Brands

Greengate  
Fifth Light  
Intelligent Lighting Controls

## Connected Lighting Systems and Smart Spaces Platform

WaveLinx



© 2023 Cooper Lighting Solutions  
All Rights Reserved  
Printed in USA  
Publication No. BR518046EN  
April 2023

Products, specifications and  
compliances are subject to  
change without notice.

Cooper Lighting Solutions is a  
registered trademark.  
All other trademarks are property  
of their respective owners.

