

LED BR40 LAMP

Model No. EB40-11W5050cec

LED **EB40-11W5050cec** delivers superior brightness, valuable energy savings, long lasting performance and true color perception. This BR40 LED flood bulb is ideal for ambient lighting due to its uniform "Cool white light (5000K) and replaces conventional 75 Watt incandescent light bulbs. Enjoy features such as: Instant on, dimming options, energy efficient, 90+CRI, and damp rated.



75W

REPLACEMENT



11 Watts



Cool White



90+ CRI



Energy Efficient



Dimmable



Damp Rated

Electrical Specifications

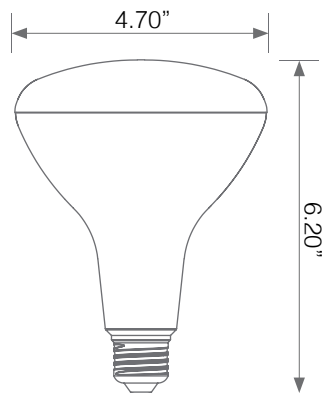
Model No.	Input Power	Input Voltage	Lumen Output	Beam Angle	Center Beam	CCT
EB40-11W5050cec	11 W	120V	1000 lm	110°	N/A	5000 K

CRI	Luminous Efficacy	Power Factor	Input Current	Base	Lamp Lifespan	Estimated Yearly Cost
90+	91 lm/W	0.9	0.1 A	E26	25,000 Hrs.	\$ 1.32

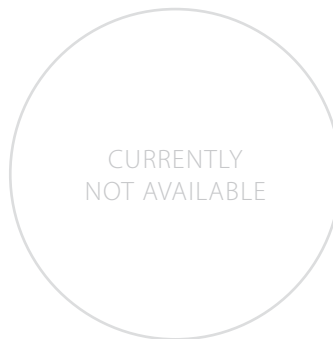
Mechanical Specifications

Rating	Operational Temperature	Inner Box QTY.	Master Box QTY.	Dimensions(in.)	UPC Code
Damp Rated	-4F - 104 F	1 pcs	10 pcs	4.70"(ø) x 6.20"(H)	811174036814

Product Dimensions



Product Photometric Data



RECOMMENDED DIMMERS BY BRAND

LUTRON: DV-603P 600W, S-600 600W, CT-103-WH 1000W, CTCL-153P-WH 600W, TGCL-153PH-WH 600W, DVWCL-153PH-WH 600W, D-600PH-DK 600W, DV-603PH-WH 600W, DV-600PH-WH 600W, S-600H-WH 600W, S-10PH 1000W, D-600RH-DK 600W, TG-600PH-WH 600W, CT-600PR-WH 600W, SCL-153P-WH 600W, DVCL-153PH 600W, S-600-IV 600W, DVCL-153P-WH 600W, DVWCL-153PH-WHC, MACL-153M-WH, MACL-153MR-WH, AY-600PH-WH, AYCL-153PH, DV-600P-WH, MACL-153MH-WH, DVCL-253PH, MSCL-OP153MH-WH, MACL-153MLH-WH, DVCL-153P-WH, LECL-153PH-WH, SCL-153PH-WH, DVCL-153P-WH-3, DVCLV-303P-WH, MAELV-600-WH, DVCL-153PR-WH, CTCL-153PDH-WH.

LEVITON: 6631-LA 600W, IPI06 600W, LIGHT ALMOND NO.6672 600W, WHITE NO.IPL06 600W, WHITE NO.6674 600W, LIGHT ALMOND NO.6681 600W, IPI06-1LZ 600W, WHITE NO.6631 600W.

MAXXIMA: MEW-DM600

GE: 18024 600W

CTL: DM600-12-3 600W

LEGRAND: HCL453PTC, RHCL453PW.