



## **WARNING**

- Installation, service, and maintenance of luminaries should be performed by a qualified licensed electrician.
- Read all instructions before installing fixtures and retain for future reference.
- Please check local electrical codes before beginning.

## **CAUTION**

- Only use with Class 2 power supplies.
- Use a wire type and gauge sized for the distance and load.
- Always consider voltage drop when linking fixtures together.
- To extend driver life span, do not exceed 80% of the driver rated load.

## **NOTICE**

- This product is for indoor installation only.

## **Installation Instructions**

### **Assembly Instructions:**

1. Open the packaging and spread all components onto a clean surface.
2. Turn power OFF at the electrical panel.

### **Dimmable Hard-Wire Driver**

To hardwire the driver (PLT-12619) to power, connect the black driver wire to the hot power wire, the white driver wire to the neutral power wire, and the green wire to the ground. A whip, located on the side, accepts a six-port hub (PLT-12620). The driver is controllable by forward phase, magnetic low voltage, or triac dimmers.

### **Non-Dimmable Plug-In Driver**

Plug the driver (PLT-12618) into a receptacle located no more than 4.11' from of the puck lights, keeping in mind the inline switch should be assessable for convenient on/off operation of the fixture(s). The driver features a connection that accepts a six-port hub (PLT-12620).

### **Hub**

The hub is a connection device that easily allows fixtures to plug into it, with the hub's 11.8" lead plugging into either the hard-wired driver (PLT-12619) or plug-in driver (PLT-12618).

Although the hub (PLT-12620) features six-ports, the actual number of fixtures that can plugged into it depends on the capacity of the driver. The dimmable hardwired driver (PLT-12619) can accept up to six fixtures and the plug-in driver (PLT-12618) can power up to five fixtures.

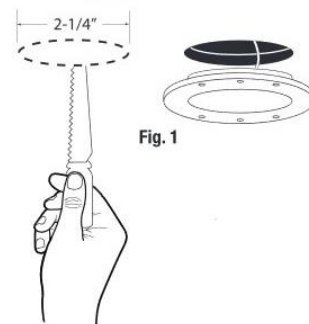
### **Puck Light Fixtures**

1. Fixtures (PLT-12600 or PLT-12601) have one 19-5/16" lead and one 39" lead that can be plugged into another fixture or directly into the hub (PLT-12620).

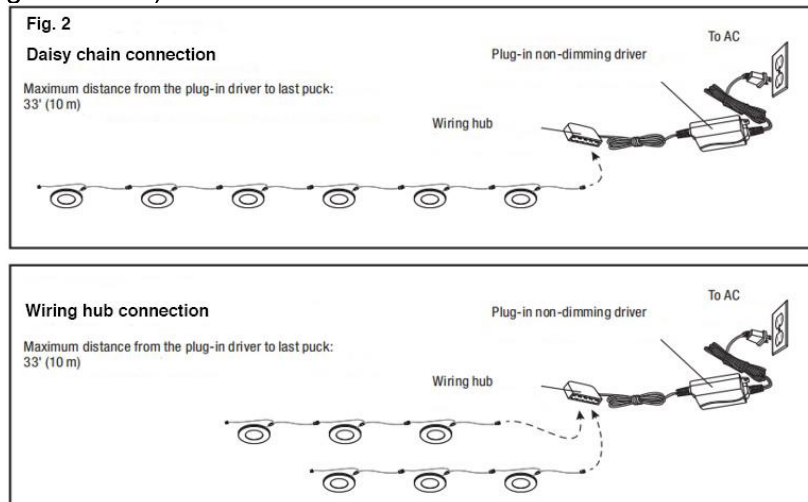


### Recessed Installation

1. Position your fixture and trace a 2-1/4" diameter circle on the surface material. Using a keyhole saw or 2-1/4" drill bit (supplied by others), cut through the surface (Fig. 1).

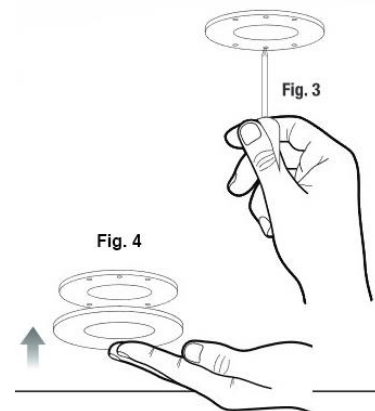


2. Feed the fixture wire(s) through the hole(s). If using six or fewer fixtures, fixtures can be plugged directly into one of the ports on the hub (PLT-12620) or daisy-chained together before plugging into the ports on the hub. If powering more than six fixtures, some or all of them must be daisy-chained together (Fig. 2). Be careful not to exceed the driver's load capacity (see "Dimmable Hard-Wired Driver" and "Non\_Dimmable Plug-In Driver").



3. Screw the puck mounting ring into the surface using the two screws (supplied) (Fig. 3).
4. Snap the magnetized trim onto the fixture (Fig.4).
5. You will not need the surface mounting ring for a recessed installation so it can be discarded.
6. The maximum distance from the driver to either the last puck or the fixture furthest from the driver cannot exceed 33'. Fixtures located more than 33' away need to be connected to another driver or the system will fail to operate.

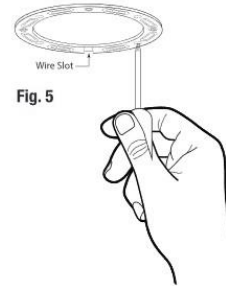
When installation is complete, turn the breaker back on.



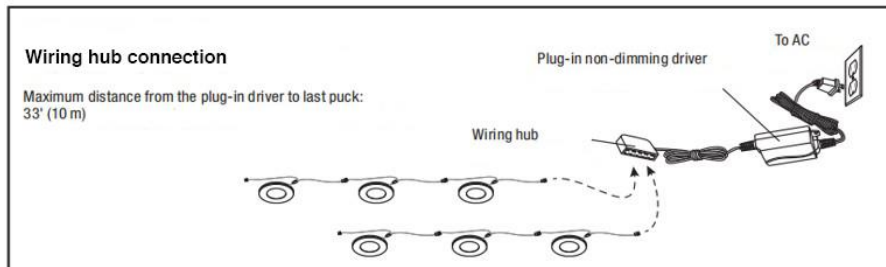
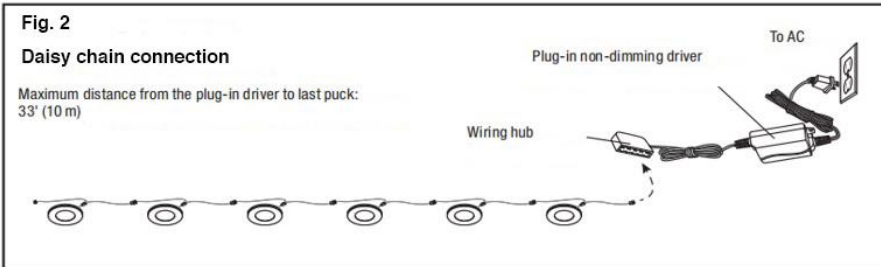


**Surface Installation**

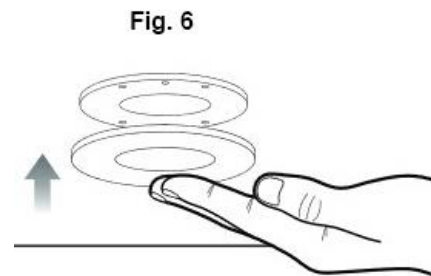
1. Position your fixture and drill a 1/2" hole (drill supplied by others) in the mounting surface. Screw the mounting ring(s) into place using the two screws (supplied) (Fig. 5).



2. Feed the fixture wire(s) through the hole(s). If using six or fewer fixtures, fixtures can be plugged directly into one of the ports on the hub (PLT-12620) or daisy-chained together before plugging into the ports on the hub. If powering more than six fixtures, some or all of them must be daisy-chained together (Fig. 2). Be careful not to exceed the driver's load capacity (see "Dimmable Hard-Wired Driver" and "Non-Dimmable Plug-In Driver").



3. Mount the surface mounting ring and snap the magnetized trim onto the fixture (Fig. 6).
4. The maximum distance from the driver to either the last puck or the fixture furthest from the driver cannot exceed 33'. Fixtures located more than 33' away need to be connected to another driver or the system will fail to operate.



When installation is complete, turn the breaker back on.

**⚠ WARNING**

- Before installing, servicing, or performing routine maintenance upon this equipment, follow these general precautions.



## LED PUCK LIGHT

### WARNING, CAUTION, SAFETY AND INSTALLATION INSTRUCTIONS

- To reduce the risk of death, personal injury, or property damage from fire, electric shock, falling parts, cuts/abrasions, and other hazards, read all warnings and instructions included with and on the fixture box and all fixture labels.
- Proper grounding is required to ensure safety.
- Power must be turned off at the breaker before installation or maintenance.
- This product must be installed in accordance with the applicable installation code by a person familiar with the construction and operation of the product and the hazards involved.
- Wear gloves and eye protection at all times while installing, servicing, or performing maintenance on the luminaire, and avoid direct eye exposure to the light source while it is on.
- To prevent wiring damage or abrasion, do not expose wiring to edges of sheet metal or other sharp objects.
- Do not install damaged product. Inspect luminaire for damage that may have occurred during transit. If damaged, contact the manufacturer immediately.
- These instructions do not purport to cover all details or variations in equipment nor to provide every possible contingency to meet in connection with installation, operation, or maintenance. Should further information be desired or should particular problems arise which are not covered sufficiently for the purchaser's or owner's purposes, contact the manufacturer.

### **⚠ ADVERTENCIA**

- Antes de instalar, reparar o realizar el mantenimiento de rutina de este equipo, siga estas precauciones generales.
- Para reducir el riesgo de muerte, lesiones personales o daños a la propiedad por fuego, descarga eléctrica, caída de piezas, cortes / abrasiones y otros peligros, lea todas las advertencias y instrucciones incluidas con y en la caja del dispositivo y todas las etiquetas del dispositivo.
- Se requiere una conexión a tierra adecuada para garantizar la seguridad.
- Se debe apagar la energía en el disyuntor antes de la instalación o el mantenimiento.
- Este producto debe ser instalado de acuerdo con el código de instalación aplicable por una persona familiarizada con la construcción y operación del producto y los peligros involucrados.
- Utilice guantes y protección para los ojos en todo momento durante la instalación, el servicio o el mantenimiento de la luminaria, y evite la exposición directa de los ojos a la fuente de luz mientras está encendida.
- Para evitar daños o abrasiones en el cableado, no exponga el cableado a bordes de láminas de metal u otros objetos afilados.
- No instale un producto dañado. Inspeccione la luminaria en busca de daños que puedan haber ocurrido durante el tránsito. Si está dañado, comuníquese con el fabricante de inmediato.
- Estas instrucciones no pretenden cubrir todos los detalles o variaciones en el equipo ni proporcionar todas las posibles contingencias a cumplir en relación con la instalación, operación o mantenimiento. Si desea obtener más información o si surgen problemas particulares que no están suficientemente cubiertos para los propósitos del comprador o propietario, comuníquese con el fabricante.