



GREENCREATIVE



**Evolution in Retrofitting**



**PinFit**





### Evolution in Retrofitting

A patented modular socket design and embedded universal driver make the PinFit suitable for any PL Lamp retrofit application.

PinFit PL Omni's proprietary modular socket design allows for easy switching of the lamp socket from G24q (4 pin) to G24d (2 pin) in the field for installation versatility. An embedded universal driver allows the lamp to perform with electronic ballasts, magnetic ballasts, or no-ballast environments, providing optimal field flexibility. With the patented modular socket design, you can rest assured that PinFit PL Omni will work in any application. Eliminate ballast compatibility issues, greatly reduce the time to audit a space, and optimize stock management costs.



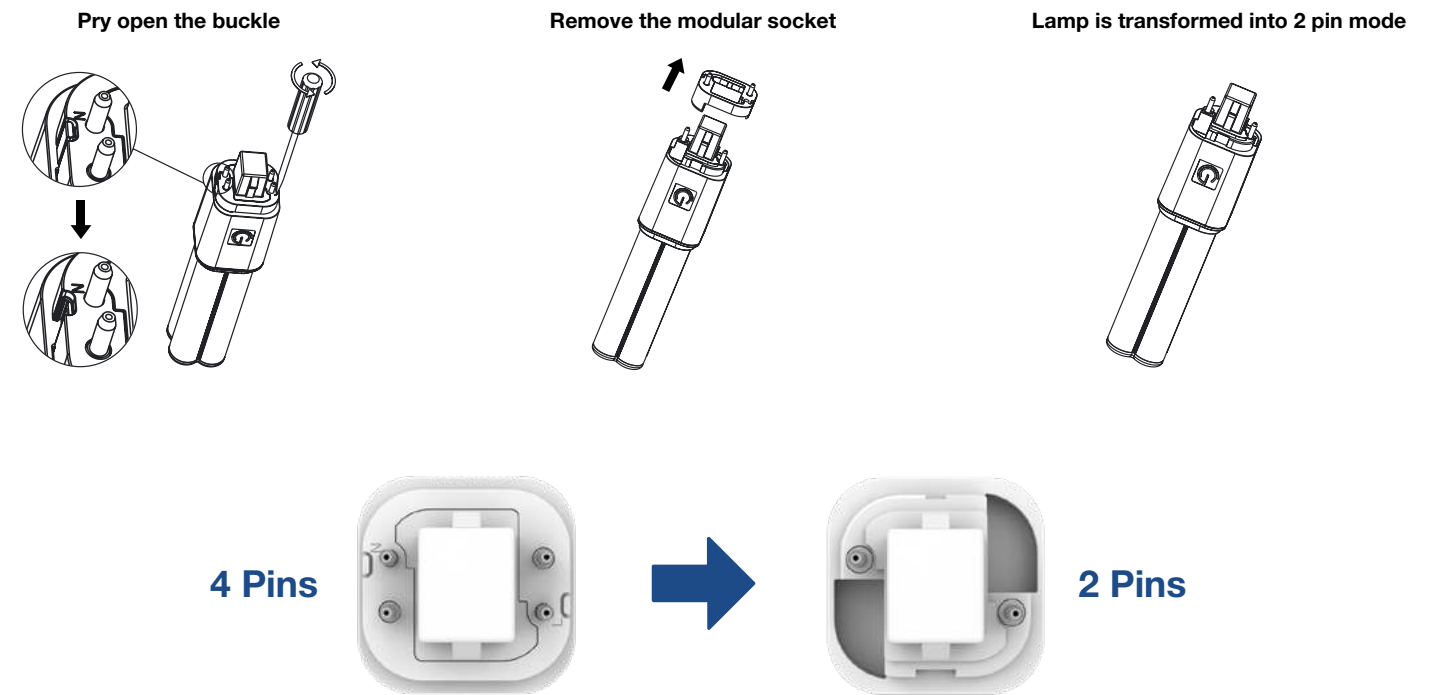




## Versatility in Installation

The revolutionary modular socket design of the PinFit PL Omni allows for easy switching of the lamp socket from G24q (4 pin) to G24d (2 pin) in the field, offering ultimate installation versatility.

Simply use a screwdriver to pry open the buckle to remove the standard 4 pin modular socket, transforming from a 4 pin to a 2 pin compatible lamp in seconds.



## Optimal Field Flexibility

An embedded universal driver allows the PinFit PL Omni to perform with electronic ballasts at 4 pin mode, and magnetic ballasts or no-ballast environments at 2 pin mode, providing optimal field flexibility for both DIrect and BYPass installations with only one lamp.

Eliminate ballast compatibility issues, greatly reduce the time to audit a space, and optimize stock management costs.





## Omnidirectional Lighting

The lamps can be installed either vertically or horizontally with 360° omni-directional light distribution, creating a uniform and pleasant lighting effect equivalent to fluorescent lamps.



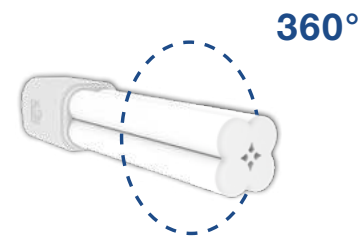
Downlight Horizontal



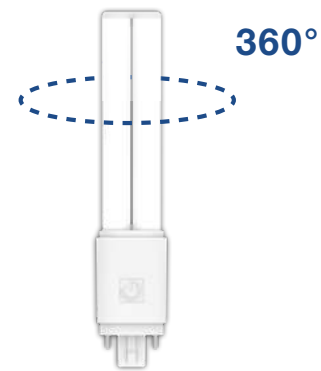
Downlight Vertical



Wall Sconce Horizontal



360°



360°

## Industry Compatibility

The series of lamps are available in 6.8W and 9W models, four color temperatures of 2700K, 3000K, 3500K and 4000K options, and are suitable for replacing most 13W-26W CFLs with G24d, GX24d, G24q and GX24q bases. All the lamps are UL classified for both direct and bypass installations, with an L70 rated lifetime of 50,000 hours and a 5-year warranty guaranteed.



6.8W PinFit PL Omni  
13W-18W CFL Replacement  
720 – 800 Lumens  
2700K, 3000K, 3500K, 4000K



9W PinFit PL Omni  
26W CFL Replacement  
1,050 – 1,150 Lumens  
2700K, 3000K, 3500K, 4000K





GREENCREATIVE

**Your Partner for Professional Lighting Solutions**

