

NEW CONSTRUCTION DOWNLIGHT INSTALLATION GUIDE – WARNING

WARNING – Read all product labels and instructions before installing fixture.

WARNING – Risk of fire or electric shock. LED fixture installation requires knowledge of luminaires electrical systems. Installation should be performed only by a qualified electrician in accordance with the National Electrical Code and relevant local code.

WARNING – Risk of fire or electric shock. Install this fixture only in ceilings that have the construction features and dimensions shown in the photographs and/or drawings.

WARNING – To prevent wiring damage or abrasion, do not expose wiring to edges of sheet metal or other sharp objects.

WARNING – Do not make or alter any open holes in an enclosure of wiring or electrical components during fixture installation.

WARNING – The fixture is intended for mounting only in a covered ceiling where only the led side of the luminaire will be exposed to damp or dry locations.

WARNING – INSTALLATION SHOULD ONLY BE PERFORMED AFTER POWER TO THE FIXTURE HAS BEEN DISCONNECTED.

NEW CONSTRUCTION DOWNLIGHT INSTALLATION

1. Make sure the POWER IS TURNED OFF at the source to the area in which you are installing the product.
2. If existing can is present, remove from ceiling or move it out of the way as it will not be needed during installation. Measure the ceiling opening to make sure the edge of the luminaire will cover the entire hole and still sit firmly in the ceiling before proceeding. If a new hole is needed, place the provided sticker on the ceiling at desired hole location. Cut the hole along the outside edge of the sticker. If using a hole cutter, set the diameter to 8.07" (205mm) for the 24.5NCDLR8DIM/xxx/277V/EXT, 5.91" (150mm) for the 12NCDLR6DIM/xxx/277V/EXT and 4.06" (103mm) for the 10NCDLR4DIM/xxx/277V/EXT. (fig. 1)
3. To open the j-box easily, insert a flat-head screwdriver (1/4" blade width) under the j-box lid and twist to open. Repeat at both ends. (fig. 2)
4. Open the j-box and insert the incoming power supply through the j-box knockout. Insert wires into the downlight quick connectors (black to black, white to white) and wire the grounds together. (fig. 3)
5. For 0-10V dimming circuits, connect the incoming grey and purple wires to the downlight's grey and purple wires using provided wire nuts. If no 0-10V dimming circuit is present, cap off the grey and purple wires. (fig. 3)
6. Connect the j-box to the downlight (fig.4). Rotate conduit only between points A and B. Do not rotate outside of points A and B where the conduit faces away from the downlight (fig. 5). For remodel installations, attach the j-box to the downlight by clipping one of the downlight's spring clips directly onto the j-box.(fig.6)
7. With the j-box in the ceiling, push up the spring-action clips and insert the downlight into the ceiling. Release the springs and make sure the downlight is secure and sitting flush in the ceiling. (fig. 7 & 8)
8. Restore power at the source and the installation is complete.

fig. 1

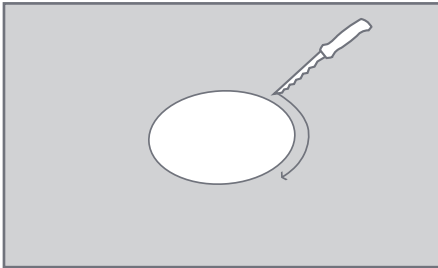


fig. 2

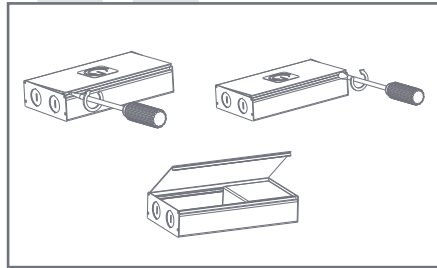


fig. 3

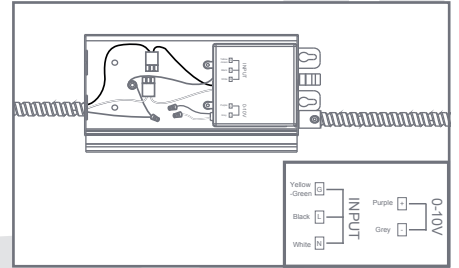


fig. 4

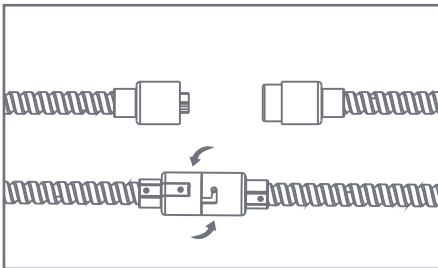


fig. 5

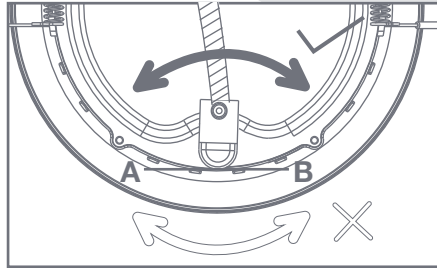


fig. 6

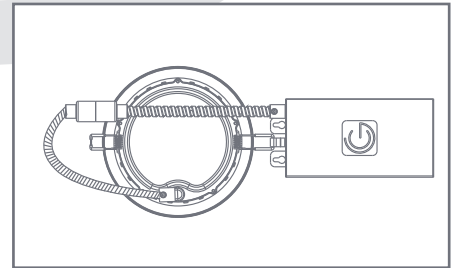


fig. 7

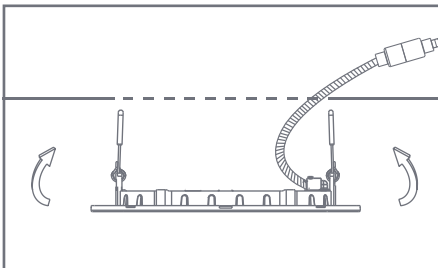


fig. 8

