



## **⚠ WARNING**

- Before installing, servicing, or performing routine maintenance upon this equipment, follow these general precautions.
- To reduce the risk of death, personal injury, or property damage from fire, electric shock, falling parts, cuts/abrasions, and other hazards, read all warnings and instructions included with and on the box and all fixture labels.
- Proper grounding is required to ensure safety.
- Power must be turned off at the breaker before installation or maintenance.
- Installation, service, and maintenance of timers should be performed by a qualified licensed electrician.
- Wear gloves and eye protection at all times while installing, servicing, or performing maintenance on the timer, and avoid direct eye exposure to the light source while it is on.
- Do not install damaged product. Inspect timer for damage that may have occurred during transit. If damaged, contact the manufacturer immediately.
- These instructions do not purport to cover all details or variations in equipment nor to provide every possible contingency to meet in connection with installation, operation, or maintenance. Should further information be desired or should particular problems arise which are not covered sufficiently for the purchaser's or owner's purposes, contact the manufacturer.

## **⚠ ADVERTENCIA**

- Antes de instalar, reparar o realizar el mantenimiento de rutina de este equipo, siga estas precauciones generales.
- Para reducir el riesgo de muerte, lesiones personales o daños a la propiedad por fuego, descarga eléctrica, caída de piezas, cortes / abrasiones y otros peligros, lea todas las advertencias y instrucciones incluidas con y en la caja del dispositivo y todas las etiquetas del dispositivo.
- Se requiere una conexión a tierra adecuada para garantizar la seguridad.
- Se debe apagar la energía en el disyuntor antes de la instalación o el mantenimiento.
- La instalación, el servicio y el mantenimiento de las luminarias deben ser realizados por un electricista autorizado y calificado.
- Utilice guantes y protección para los ojos en todo momento durante la instalación, el servicio o el mantenimiento de la luminaria, y evite la exposición directa de los ojos a la fuente de luz mientras está encendida.
- No instale un producto dañado. Inspeccione la luminaria en busca de daños que puedan haber ocurrido durante el tránsito. Si está dañado, comuníquese con el fabricante de inmediato.
- Estas instrucciones no pretenden cubrir todos los detalles o variaciones en el equipo ni proporcionar todas las posibles contingencias a cumplir en relación con la instalación, operación o mantenimiento. Si desea obtener más información o si surgen problemas particulares que no están suficientemente cubiertos para los propósitos del comprador o propietario, comuníquese con el fabricante.

## **WARNING**

- The device must be mounted in a vertical position with the receptacle facing downward and with the receptacle at least 2 feet above the ground level to prevent water immersion.
- Do not exceed the maximum amperage rating of 8.3 Amps, or maximum wattage rating of 1,000 Watts.
- ⚠ Cancer and reproductive harm – [www.P65Warnings.ca.gov](http://www.P65Warnings.ca.gov)

## **CAUTION**

- This product should be plugged into a 3-conductor GFCI receptacle.
- Suitable for outdoor use.
- Rain-tight when mounted vertically with the receptacle facing downward.
- Do not immerse in water.
- Temperature limits of the switch head: -40 to 104°F (-40 to 40°C).



## Federal Communications Commission Interference Statement

This equipment has been tested and found to comply with the limits for a Class B digital device, pursuant to Part 15 of the FCC Rules. These limits are designed to provide reasonable protection against harmful interference in a residential installation. This equipment generates, uses and can radiate radio frequency energy and, if not installed and used in accordance with the instructions, may cause harmful interference to radio communications. However, there is no guarantee that interference will not occur in a particular installation. If this equipment does cause harmful interference to radio or television reception, which can be determined by turning the equipment off and on, the user is encouraged to try to correct the interference by one or more of the following measures:

- Reorient or relocate the receiving antenna.
- Increase the separation between the equipment and receiver.
- Connect the equipment into an outlet on a circuit different from that to which the receiver is connected.
- Consult the dealer or an experienced radio/TV technician for help

This device complies with Part 15 of the FCC Rules. Operation is subject to the following two conditions: (1) This device may not cause harmful interference, and (2) this device must accept any interference received, including interference that may cause undesired operation.

FCC Caution: Any changes or modifications not expressly approved by the party responsible for compliance could void the user's authority to operate this equipment.

## Installation Instructions

- The device must be mounted in a vertical position with the receptacle facing downward and with the receptacle at least 2 feet above the ground level to prevent water immersion.
- Settings can be made manually on the timer or remotely using the transmitter. The transmitter can operate the timer from up to 100 feet.
- Select the "OFF" setting to turn off all attached devices.
- Select the "ON" setting to turn on all attached devices.
- Select the "Sensor" (timer) or the "☀️" (transmitter) setting to turn on the attached devices at dusk and turn off the attached devices at dawn.
- Select the 2Hrs, 4Hrs, 6Hrs or 8Hrs setting to specify the amount of time the connected devices will be on after dusk.
- The chosen setting will repeat every 24 hours.
- Plug the power cord into a 3-conductor GFCI receptacle.

## Product Description

### 1. Sensor (☀️):

Sensor will turn receiver on at dusk and off at dawn.

### 2. Operating Mode:

Timer will turn ON, 2, 4, 6, or 8 hours after dusk.

### 3. Select button:

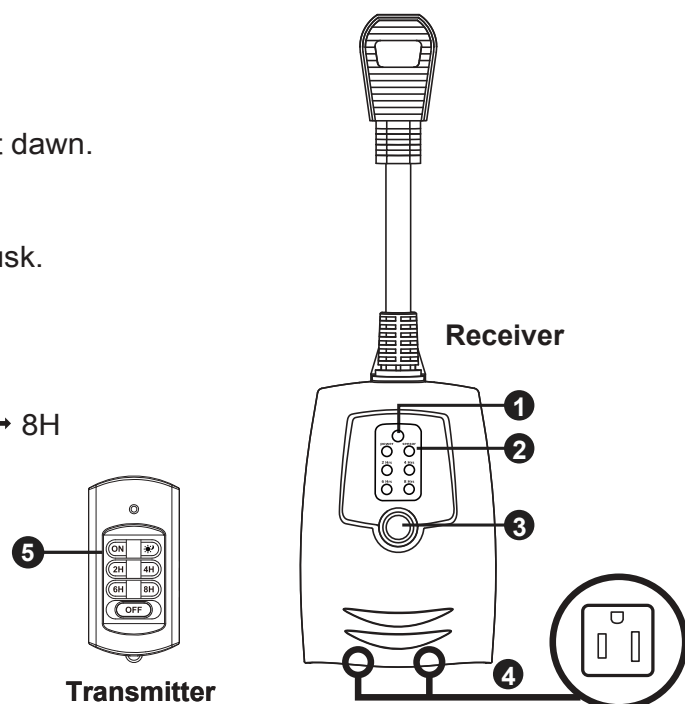
To select the function and repeatedly.

Power ON → Sensor (☀️) → 2H → 4H → 6H → 8H  
→ OFF → ON

### 4. Outlets:

Plug the lights or devices to be controlled by the timer into one of the outlets.

### 5. Transmitter

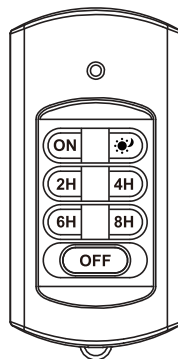




## Operation Tips

- When set to ON, the receiver will provide continual power to all connected devices until the receiver is switched to OFF or switched to any of the other operating modes.
- In the sensor (☀) mode, temporary light sources like headlights, porch lights, streetlights and other external light sources will not interfere with the photocell function unless the external light source is on for more than 15 minutes. In that case, the receiver will shut off until darkness is restored. This function has been implemented to avoid flickering, or constant on/off for all connected devices.
- Once sensor (☀) mode activates at dusk in conjunction with the 2hr, 4hr, 6hr, or 8hr mode, the program cycle will complete before the timer resets. Headlights, porch lights, streetlights and other external light sources will not interfere with the active program.
- In case of power failure, the timer will stop operating when the power goes out. Once power is restored, the desired setting will need to be reset.

## Remote (Transmitter)

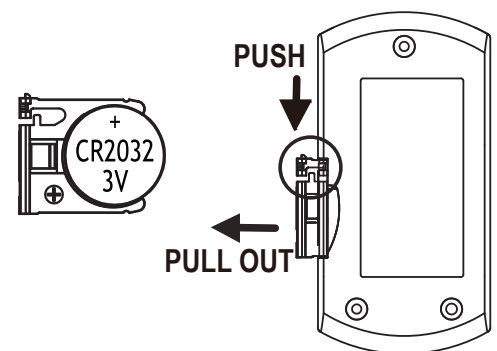


RECEIVER MODEL: TM-119  
TRANSMITTER MODEL: TR-033-7  
FCC ID: PAGTR-033-7

## Remote (Transmitter) Battery Information

- Turn the remote control to the back. (The black circle is the buckle)
- Push the buckle to the right while pulling out the battery cover.
- Remove the battery compartment cover away from the remote (see diagram below).
- Remove the old battery and place a new Type 3V (CR2032) lithium battery into the battery compartment.
- Ensure the battery is installed correctly with the positive (+) side up.
- Replace the battery compartment cover.
- Dispose or recycle spent/discharged batteries in compliance with all applicable laws. For detailed information, contact your local solid waste authority.

Caution: Failure to properly align the battery polarity can cause personal injury and/or property damage.




## Safety Information

**WARNING:** Disregarding Cautions may cause damage, fire, or fatal shock. When using outdoor electrical products, basic safety precautions should always be followed to reduce the risk of fire, electric shock, and personal injury.



## BATTERY HANDLING AND USAGE

- REMOVE AND IMMEDIATELY RECYCLE OR DISPOSE OF USED BATTERIES ACCORDING TO LOCAL REGULATIONS AND KEEP AWAY FROM CHILDREN. DO NOT DISPOSE OF BATTERIES IN HOUSEHOLD TRASH OR INCINERATE.
- EVEN USED BATTERIES MAY CAUSE SEVERE INJURY OR DEATH.
- CALL A LOCAL POISON CONTROL CENTER FOR TREATMENT INFORMATION.
- COMPATIBLE BATTERY TYPE CR2032 LITHIUM BATTERY.
- NOMINAL BATTERY VOLTAGE 3V.
- NON-RECHARGEABLE BATTERIES ARE NOT TO BE RECHARGED.
- DO NOT FORCE DISCHARGE, RECHARGE, DISASSEMBLE, HEAT ABOVE (MANUFACTURER'S SPECIFIED TEMPERATURE RATING) OR INCINERATE. DOING SO MAY RESULT DUE TO VENTING, LEAKAGE OR EXPLOSION RESULTING IN CHEMICAL BURNS.
- ENSURE THE BATTERIES ARE INSTALLED CORRECTLY ACCORDING TO POLARITY (+ AND -).
- DO NOT MIX OLD AND NEW BATTERIES, DIFFERENT BRANDS OR TYPES OF BATTERIES, SUCH AS ALKALINE, CARBON-ZINC, OR RECHARGEABLE BATTERIES.
- REMOVE AND IMMEDIATELY RECYCLE OR DISPOSE OF BATTERIES FROM EQUIPMENT NOT USED FOR AN EXTENDED PERIOD OF TIME ACCORDING TO LOCAL REGULATIONS.
- ALWAYS COMPLETELY SECURE THE BATTERY COMPARTMENT. IF THE BATTERY COMPARTMENT DOES NOT CLOSE SECURELY, STOP USING THE PRODUCT, REMOVE THE BATTERIES, AND KEEP THEM AWAY FROM CHILDREN.

<b>⚠ WARNING</b>	
<ul style="list-style-type: none"><li>• <b>INGESTION HAZARD:</b> This product contains a button cell or coin battery.</li><li>• <b>DEATH</b> or serious injury can occur if ingested.</li><li>• A swallowed button cell or coin battery can cause <b>Internal Chemical Burns</b> in as little as <b>2 hours</b>.</li><li>• <b>KEEP</b> new and used batteries <b>OUT OF REACH of CHILDREN</b>.</li><li>• <b>Seek immediate medical attention</b> if a battery is suspected to be swallowed or inserted inside any part of the body.</li></ul>	

## Troubleshooting

- The receiver (connector body) doesn't turn on – Make sure the AC power cord is securely plugged into an AC receptacle. Unplug the unit for a moment, and then plug it back in again. Check the receptacle by plugging in another device.
- The remote control doesn't work – Make sure the battery is new. Make sure the transmitter and the receiver are set to the same channel. Stand closer to the receiver, the range should be up to 100 feet. Doors or walls will reduce the transmittance distance.
- In case of overloading, this product is equipped with a circuit breaker which will shut off all power. Eliminate the overload and then push to reset the circuit breaker for overload protection.