



LED EB20-4050e-2

Part #: EBBR20DM/M/5.5W/525/120D/50K/E26/E/2 Bulb Class: BR20



Product Description

LED EB20-4050e-2 delivers superior brightness, valuable energy savings, long lasting performance and true color perception. These BR20 LED flood bulbs are ideal for ambient lighting due to its uniform *cool white light (5000K) and replace conventional 50 Watt incandescent light bulbs. Enjoy features such as: instant on, dimming options, shatter resistance, mercury free, 90+CRI and damp rated.



Estimated Energy Cost: \$0.66 per year

*Note: Design, features and specifications subject to change without notice. Some features may not be available on all models. For more information regarding dimmer compatibility please visit: www.eurilighting.com or call 1-888-743-5766

Available only as a twin-pack.
(EB20-4050e-2 contains 2 LED Bulbs.)

Specifications

Input Power	Input Voltage	Lumen Output	Beam Angle	Center Beam	CCT
5.5 W	120V/60Hz	525 lm	120°	N/A	5000 K
CRI	Luminous Efficacy	Power Factor	Input Current	Base/Cap	Lamp Lifespan
90	95 lm/W	0.9	0.05 A	E26	25,000 Hrs.

Product Features



Dimmable



Instant-On/Off

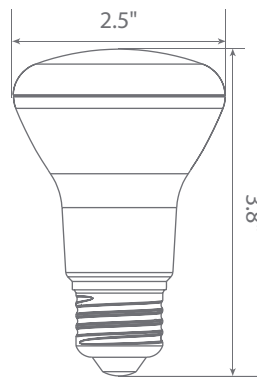


Mercury Free

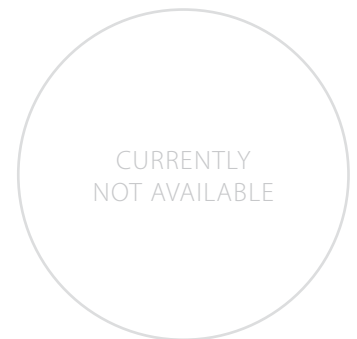


Damp Rated

Product Dimensions



Product Photometric Data



Euri Lighting | A Division of **IRTRONIX** Inc.

20900 Normandie Avenue Bldg. B, Torrance, CA 90502 | Tel: 888.743.5766 | Fax: 310.787.1166 | www.eurilighting.com

©2017 Euri Lighting. All Rights Reserved