



LED T8 U-BEND HYBRID: GLASS

DESCRIPTION

Suitable for use with or without a ballast, these LED T8 u-bend hybrid tubes outperform and outlast traditional T8 u-bend fluorescent tubes.

FEATURES

- Frosted glass lens reduces visual glare
- Suitable for use in totally enclosed fixtures
- Instantaneous full light output upon power-up
- No rewiring or modifications of any kind required for plug-and-play (Type A) operation
- Can operate directly off of line voltage for ballast bypass (Type B) operation; ballast must be removed and fixture rewired for double-ended operation during installation. The fixture may also be rewired for single-ended operation during installation; see installation instructions for more information
- Solid state replacement for 2 ft. F31T8 and F32T8 u-bend tubes; can replace F32T12 and F40T12 u-bend tubes when installed as ballast bypass (Type B)
- Delivers up to 130 Lumens per Watt for highly efficient performance
- Wattage and output varies depending on installation method, see Wattage Table for full breakdown
- Operates on most electronic T8 (instant & programmed rapid start) ballasts, and AC emergency ballasts as listed in compatibility list. See ballast compatibility sheet for full list of compatible ballasts.

LISTINGS

- UL Listed for damp locations
- RoHS
- FCC
- DesignLights Consortium® 5.1 Standard - meets the requirements for the highest DLC qualification for efficacy and lumen maintenance

WARRANTY

- 5 year prorated warranty; see pltsolutions.com for warranty details

project name	type
catalog number	
comments	voltage
approved by	date



APPLICATIONS

- Office Lighting
- High Bays
- Industrial Strips
- Warehouses
- Stairwells
- Cold Storage

PERFORMANCE	CRI	83
	Beam	160°
	CCT*	4000K, 5000K
	Life (L70)	50000
ELECTRICAL	Power Factor	>0.9
	THD	20%
	Input Voltage	120-277V
CONSTRUCTION	Operating Temperature	-4°F to 113°F (-20°C to 45°C)
	Base	Medium Bi-Pin
	Lens	Frosted
LISTINGS	Certifications	UL Listed; FCC; DLC
	Material Usage	RoHS - No mercury or lead
	Environment	Suitable for Damp Locations

*For wattage and lumen information, see tables below.

PERFORMANCE SUMMARY

Item #	Length	Lumens*	Watts*	LPW*	CCT	CRI	Beam	Envelope	Life/Hours	Leg Spacing	DLC Level	DLC #
PLTS-60017	2'	1950	15W/ 16.5W	118/ 130	5000K	83	160°	Glass	50,000	6"	5.1 Standard	PLTP1235
PLTS-60018	2'	1950	15W/ 16.5W	118/ 130	4000K	83	160°	Glass	50,000	6"	5.1 Standard	PLTP1234
PLTS-60019	2'	1950	15W/ 16.5W	118/ 130	5000K	83	160°	Glass	50,000	1.5"	5.1 Standard	PLTP6235
PLTS-60020	2'	1950	15W/ 16.5W	118/ 130	4000K	83	160°	Glass	50,000	1.5"	5.1 Standard	PLTP6234

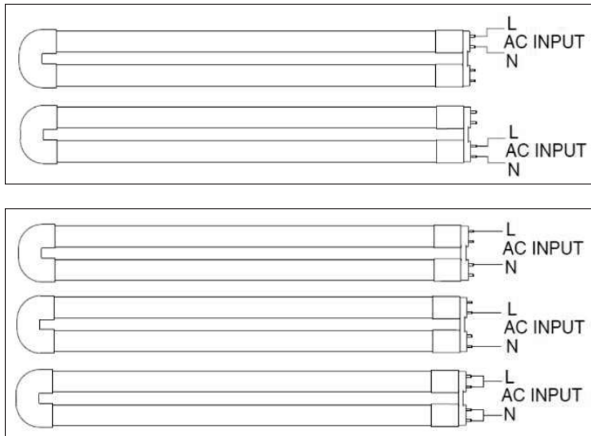
*See Wattage Table for full breakdown

WATTAGE TABLE

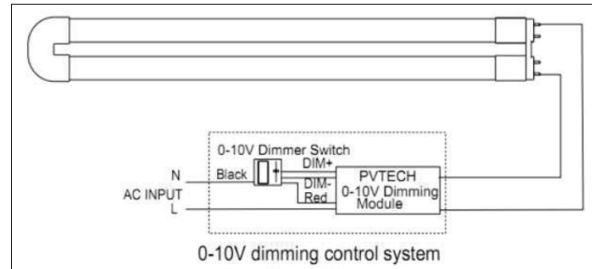
Wattage	Installation	Lumen	Efficacy
15	Type B	1950	130
16.5	Type A	1950	118

WIRING DIAGRAMS

TYPE B NON-DIMMING



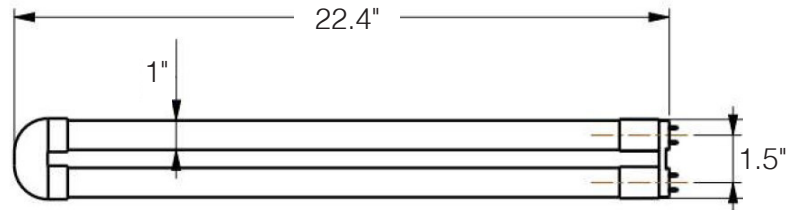
TYPE B DIMMING



DIMENSIONS

1.5" LEG SPACING

Length: 22.4"
Diameter: 1"
Leg Spacing: 1.5"



6" LEG SPACING

Length: 22.4"
Diameter: 1"
Leg Spacing: 6"

