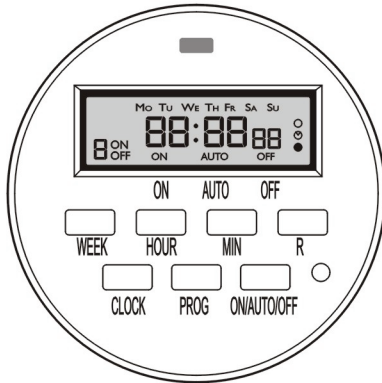




WEEKLY DIGITAL TIMER

PROGRAMING & SAFETY INSTRUCTIONS



Applications:

- Lighting
- Cooling systems
- Humidifiers
- Aquariums
- Heating systems
- Indoor sprinklers
- Nebulizers
- Ventilators

RATINGS

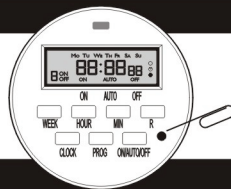
Rated Voltage: 240VAC, 60Hz, 15A Max Loading: 3500W

WARNING

- Electrical shock hazard • Risk of injury or death • Risk of fire
- For indoor use only • Use a grounded outlet • Follow local electrical codes

BEFORE YOU START

- Plug timer in for at least 5 minutes before programing.
- Press RESET button (Using a pin), to reset the clock & timer.
 - Note: These steps MUST be taken before initial use, or when LCD no display or when the timer needs to be reset.



SET UP DAY & TIME

- Press & Hold **CLOCK**, and Press **WEEK** to select the current **DAY**. (Fig 02)
- Press & Hold **CLOCK**, and Press **HOUR** to select the current **HOUR**. (Fig 02)
- Press & Hold **CLOCK**, and Press **MIN** to select the current **MIN**. (Fig 02)

• DST - DAYLIGHT SAVING TIME

- Press **HOUR & MIN simultaneously** to activate or deactivate **DST**. (Fig 03)
- Note: A small clock symbol ☉ will appear on the far right of the LCD screen, while DST is active.

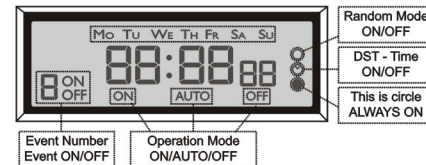
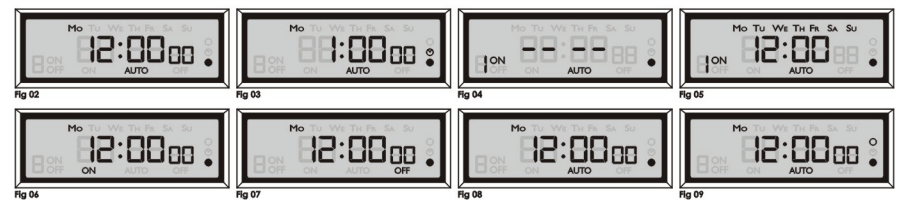
INCORRECT INSTALLATION AND USE CAN LEAD TO PRODUCT FAILURE AND DAMAGE TIMER. ANY DAMAGE TO TIMER AS A RESULT OF IMPROPER USE OR INSTALLATION REVOKES PRODUCT WARRANTY.

PROGRAMMING / SCHEDULE

- You may program the timer for up to 16 events per day.
- A time setting to **Turn On**, is an **ON EVENT**.
- A time setting to **Turn Off**, is an **OFF EVENT**.
- Press & Release **PROG** to enter **PROGRAMMING MODE** and select your **EVENT**. (Fig 04)
Note: Every time you press **PROG** you advance to the next **EVENT**.
- Press **WEEK** to select your day/s for your selected **EVENT**. (Fig 05)
Note: Press **WEEK** multiple times until you get the day combination you want.
 - Combination weekly setting
During the timer **ON/OFF** setting mode, press "WEEK" once. The display will show Mo., Tu., We., Th., Fr., Sa., Su., This means it is a daily on/off setting.
Press "WEEK" again, the week day will show, set to the required week day, In this setting, the timer will only work in the settled week day.
After the display showing Su, the next press will show Mo, Tu, We, Th, Fr. The timer gives the setting only for the working day in the week.
Press "WEEK" again, the display will show Sa, Su. That means the timer gives the setting only in the week end and Sunday.
Press "WEEK" again, the display will show the whole week except Sunday. That means the timer will work on the week day except Sunday.
Press "WEEK" again, the display will show Mo, We, Fr. the timer will work in these 3 days.
Press "WEEK" again, the display will show Tu, Th, Sa. the timer will work in these 3 days.
Press "WEEK" again, the display will show Mo, Tu, We. The timer will work in these 3 days.
Press "WEEK" again, the display will show Th, Fr, Sa. The timer will work in these 3 days.
Press "WEEK" again, there is no week day showing. The timer won't work in all the days.
- Press **HOUR** then **MIN** to select a time for your selected **EVENT**. (Fig 05)
 - Press "PROG" again to enter into the NEXT PROGRAMS SETTING mode.
 - Repeat above steps to set rest groups programs/event according to your requirement total 8 groups programs/16 events.
 - Press **R** to clear the display. Press **R** again to restore the display.

MODE SELECTION

- After setting up your timer, there are 4 operating modes:
 - **ON** - Power is on - Timer is not active. (Fig 06)
 - **OFF** - Power is off - Timer is not active. (Fig 07)
 - **AUTO** - Uses the timer settings you programmed. (Fig 08)
 - **RANDOM** - Adjusts your settings by random 2 minute increments of ± 30 minutes. (Fig 09)
This makes it look as if someone is in the house.
- Press **ON/AUTO/OFF** to select one of these modes. (Fig 06, 07, 08)
- Press **WEEK & HOUR simultaneously** to activate or deactivate the **RANDOM** mode. (Fig 09)
Note: A small hollow circle "o" will appear on the far right side of the LCD screen, while **RANDOM** mode is active.



Remark: If you find no display for LCD, please recharge the timer for five minutes, then RESET the timer before set the time and programs!
If have any question please contact the electrician or the local dealer!