

# STARFISH WIFI SMART 6' INDOOR STRIP, OPTIONAL 3' EXTENSION

Model: S11263, S11264



## INSTALLATION AND SAFETY INSTRUCTIONS

**IMPORTANT:** Read before installing fixture. Retain for future reference.

### WARNING: Risk of Fire or Electric Shock

- This strip lighting is only intended to be used with the products provided in the kit, or the S11264 extension strips.
- This product consumes a total of 20W (.167A) and is rated to control up to 8 additional S11264 extension strips. Each extension strip consumes 8.8W (.075A).
- Installation requires knowledge of luminaries electrical systems. If not qualified, do not attempt installation. Contact a qualified electrician.
- To reduce risk of fire and over-heating, secure all connections.
- TURN OFF the electrical power before proceeding.
- The electrical rating of this product is 120V/60Hz.
- The grounding and banding of the overall system shall be done in accordance with National Electric Code (NEC) Article 600 and local codes.
- To prevent wiring damage or abrasion, do not expose wiring to edges of sheet metal or other sharp objects.
- Do not make or alter any open holes in an enclosure of wiring or electrical components during kit installation.
- This device is not intended for use with emergency exits.

**NOTE:** This device complies with part 15 of the FCC Rules. Operation is subject to the following two conditions: (1) This device may not cause harmful interference; (2) This device must accept any interference received, including interference that may cause undesired operation. Visit [www.Satco.com](http://www.Satco.com) for full warranty details and dimmer compatibility information.



Satco Products, Inc.  
Brentwood, NY 11717

## INSTALLATION

Before installation, select a location where you want to install, measure the required length of strip light, and mark it. Confirm that the adapter power cord will reach the desired power outlet and the LED strip light. Clean the mounting surface and keep it dry. It is important that the surface is smooth and clean for proper adhesion.

**STEP 1:** Turn power OFF before installing fixture.

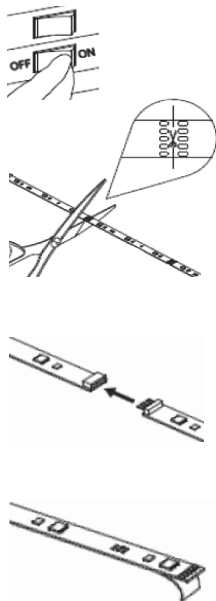
**STEP 2:** Adjust strip light length. It should only be cut in the designated locations.

**STEP 3:** Connect the strip light to another one (if you want extensions), ensure that the polarity symbols are aligned.

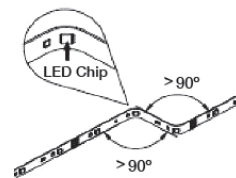
**NOTE: Strip light can be extended up to 10M.**

**STEP 4:** Remove the paper liner from the back of the strip light and press against the mounting surface. Ensure minimal hand contact to the adhesive.

**DO NOT reposition strip light once it is mounted.**



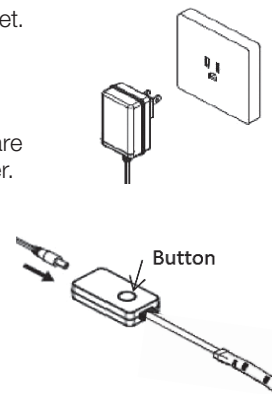
**STEP 5:** If there is an LED chip in a corner when placing the strip light, ensure the angle of the bend is greater than 90 degrees to avoid damaging the LED chip.



**STEP 6:** Plug strip light into the nearest outlet. Installation is complete. Turn power ON.

**STEP 7:** Connect the strip light to the controller, ensure that the polarity symbols are aligned. Connect power adapter to controller. Via the control button on the driver, toggle through the functions:

- Warm White – ON
- Cool White – ON
- Warm and Cool White – ON
- RGB – ON
- OFF
- Press and hold on for 5 seconds to connect APP



**STEP 8: App Connection:** To connect your device, download the free “Starfish Smart Lighting” App from the app store. Please refer to our Starfish User Guide for detailed instructions on how to pair your device.



Download the  
STARFISH App

