

# JUNO®

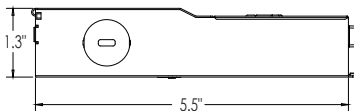
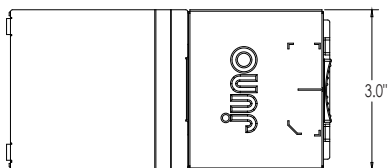
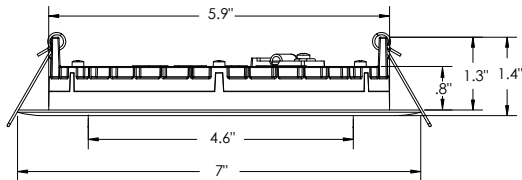
## Juno Wafer™ LED Downlight Series

6" LED Regressed Wafer Switchable Downlight  
950 Lumens

### WF6 REG SWW5 Series



### Dimensions



Project:

Fixture Type:

Location:

Contact/Phone:

### Product Features

The 6" regressed round baffle with 5CCT Switchable White technology provides high-quality light output and efficiency featuring a switch for easy color temperature adjustment to choose between 2700K, 3000K, 3500K, 4000K, or 5000K - while eliminating the need for recessed housings.

- Regressed lens and baffle trim design to reduce glare for comfortable and even illumination
- Canless - no can required; equals easy to install and less labor
- 5 selectable color temperatures to choose with a switch ranging from warm (2700K) to daylight (5000K) allowing customization for endless applications

### Applications

- Residential and light commercial including multi-family, hotels, assisted living, dormitories and other multi-level construction
- Shallow slim profile allows for easy retrofit, remodel or new construction insulated and drop ceiling installations
- Wet rated and airtight: perfect for showers, bathrooms, and outdoor soffits

### Performance

Delivered Lumens	950L Nominal at 3000K
LED Color Temperature	Switchable White (27K, 30K, 35K, 40K, 50K) Default set at 3000K
CRI	90+
Voltage	Dedicated 120V
Dimming	Dimmable to 10% only with triac dimmers

\*For a list of compatible dimmers see JUNO-WAFERS-DIM

### Specifications

Aperture:	4.6"
Ceiling opening:	6.25"
Overlap trim:	7"
Height:	1.4"
Lens regression:	.5"

# Juno® Juno Wafer™ LED Downlight Series

## 6" LED Regressed Wafer Switchable Downlight 950 Lumens



### ORDERING INFORMATION

#### Downlight

Example: WF6 REG SWW5 90CRI MW M6

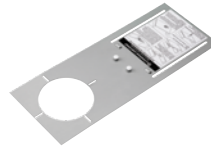
Series	Trim Style	Color Temperature	Rendering Index	Finish
<b>WF6</b>	6" Wafer-Thin LED Downlight	<b>SWW5</b> Switchable White (2700K, 3000K, 3500K, 4000K, 5000K)	<b>90CRI</b> 90+ CRI	<b>MW</b> Matte White

#### Accessories: Order as separate catalog number.

Series	
<b>WF8643 PAN U</b>	Universal New Construction Pan
<b>WF6 PAN R12</b>	6" new construction pan, retail pack of 12
<b>WF6GR MW JZ</b>	6" Goof Ring
<b>WFJB U</b>	Remodel Joist Bar
<b>WFEXC6 SW3PIN FT4</b>	3-Pin 6ft Cable
<b>WFEXC10 SW3PIN FT4</b>	3-Pin 10ft Cable
<b>WFEXC20 SW3PIN FT4</b>	3-Pin 20ft Cable



WF8643 UNIVERSAL  
New Construction Pan



WF6 PAN  
6" New  
Construction Pan



Remodel Joist Bar



WFEXCx  
3-Pin Cable

### PERFORMANCE DATA

	WF6 REG
Input Voltage	120V
Input Power Typical	13W (+/-5%)
Frequency	60 Hz
EMI/RFI	FCC Title 47, Part 15 Class B (consumer)
Minimum Starting Temp	-40°F (-40°C)

**Note:** Actual performance may differ as a result of end-user environment and application. All values are design or typical values, measured under laboratory conditions at 25°C.

#### LIGHTING PERFORMANCE DATA DONNÉES SUR LE RENDEMENT DE L'ÉCLAIRAGE

Light Appearance (CCT)  
Aspect de la lumière (CCT)

<b>2700K</b> soft white   blanc doux	944 lumens   72 lumens per watt
<b>3000K</b> warm white   blanc chaud	950 lumens   73 lumens per watt
<b>3500K</b> neutral white   blanc neutre	968 lumens   74 lumens per watt
<b>4000K</b> cool white   blanc froid	982 lumens   75 lumens per watt
<b>5000K</b> daylight   blanc neutre	992 lumens   76 lumens per watt
Watts	13
Color Accuracy (CRI) Précision des couleurs (CRI)	90

# Juno® Juno Wafer™ LED Downlight Series

## 6" LED Regressed Wafer Switchable Downlight 950 Lumens



### Specifications

#### Housing

Die cast aluminum mounting frame with integral polycarbonate flange provides passive thermal cooling achieving L70 at 50,000 hours • Lens regressed to .5" with baffle trim design to reduce glare for comfortable and even illumination • FT4 3-pin plenum rated cable connector to connect from module to remote driver box • Steel spring clip for easy installation. 6" cut out template is provided to ensure a correct sized hole is cut into ceiling for proper installation of the trim. Size of hole should not exceed 6 ¼ inches for this product. Can be installed from 3/8" to 1 ½" ceiling thickness • Can be removed from below the ceiling for service or replacement.

#### LED Light Engine

LEDs are integrated to one piece high purity aluminum, thermally conductive housing to provide uninterrupted heat transfer to ensure long life of the LED • Switchable white color temperature from 2700K, 3000K, 3500K, 4000K, 5000K • 90 CRI minimum • Color accuracy within 4 step McAdams Ellipse at the end CCT (2700K and 5000K), within 6 step McAdams Ellipse in the middle CCT (3000K, 3500K, and 4000K) • Dimming 100% to 10% with most standard incandescent dimers (see list of approved dimmers).

#### Driver

Connect directly to 120V Class-2 (CAN ICES-005 (B) / NMB-005 (B)) LED driver. 120V 60 Hz constant current driver provides noise free operation • IC rated driver with convenience of a switch to choose between 5 selectable color temperature options ranging from 2700K (warm white), 3000K, 3500K, 4000K, or 5000K (daylight) • The isolated driver integrated inside steel remote box with four 7/8" knockouts with slots for pryout. Suitable for pulling wires with the 12 cubic-inch wiring compartment to accommodate up to (6) 14 gauge insulated conductors; making the Wafer LED Downlights much easier to wire in 2in/2out (plus ground) daisy-chain applications and contractor friendly. • 2" plenum space required for installation of the remote driver box Edge-lit LED technology uses light guided plate to distribute light.

#### Optical System

• Polycarbonate lens provides even illumination throughout the space • Efficient system that can produce over 950 lumens while using 13W • Replaces 75W incandescent.

#### Life

Rated for 50,000 hours at 70% lumen maintenance.

#### Labels

CSA certified to US and Canadian safety standards • ENERGY STAR® certified product • Suitable for wet location • Air-Loc certified in accordance with ASTM E283-2004 • NOM Certified • Can be used to comply with California Title 24 Part 6 High Efficacy LED light Source Requirements • U.S. Patent No. 10,681,784.

#### Testing

All reports are based on published industry procedures; field performance may differ from laboratory performance.

Warranty 5-year limited warranty. Complete warranty terms located at: [www.acuitybrands.com/CustomerResources/Terms\\_and\\_conditions.aspx](http://www.acuitybrands.com/CustomerResources/Terms_and_conditions.aspx)

Specifications subject to change without notice.

# Juno® Juno Wafer™ LED Downlight Series

## 6" LED Regressed Wafer Switchable Downlight

### 950 Lumens



### PHOTOMETRICS

Distribution Curve

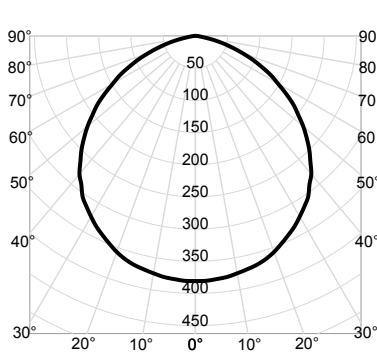
Distribution Data

Output Data

Coefficient of Utilization

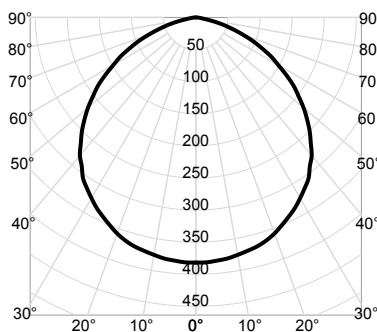
Illuminance Data at 30" Above Floor for a Single Luminaire

**WF6 REG SWW5 90CRI\_2700K** Input Watts: 13.0, Delivered Lumens: 1012, LPW: 77.8, S/MH: 1.26, Test No: ISF 202635P6



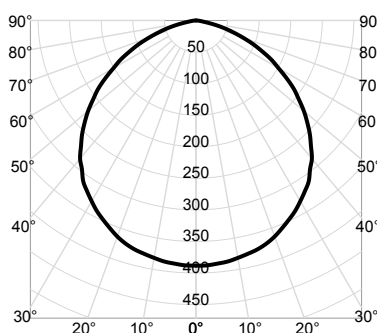
CP Summary		Zonal Lumen Summary				Coefficients of Utilization										Cone of Light			Luminance (cd/sq.m)	
0°	Zone	Lumens	% Fixture	pf	pc	80%		20%		70%		50%		Mounting Height	Initial FC Center Beam	Beam Diameter	Average Luminance			
				pw	50%	30%	10%	50%	30%	10%	50%	30%	10%							
0°	0° - 30°	299	30%	0	119	119	119	116	116	116	111	111	111	6.0	10.6	16.7	0°	47,913		
5°	0° - 40°	488	48%	1	105	102	98	103	100	96	99	96	93	8.0	5.9	22.2	45°	44,520		
15°	0° - 60°	845	83%	2	93	86	81	91	85	80	87	82	78	10.0	3.8	27.8	55°	40,731		
25°	0° - 90°	1,012	100%	3	82	74	68	80	73	67	77	71	66	12.0	2.6	33.3	65°	33,731		
35°	90° - 180°	0	0%	4	73	64	58	71	63	57	69	62	57	14.0	1.9	38.9	75°	21,419		
45°	0° - 180°	1,012	100%	5	65	56	50	64	56	50	62	55	49				85°	6,815		
55°		186		6	59	50	44	58	49	43	56	49	43	Beam Angle: 108.5°						
65°		113		7	53	45	39	52	44	38	51	44	38	Field Angle: 151.9°						
75°		44		8	49	40	34	48	40	34	47	39	34							
85°		5		9	45	37	31	44	36	31	43	36	31							
90°		0		10	41	33	28	41	33	28	40	33	28							

**WF6 REG SWW5 90CRI\_3000K** Input Watts: 13.0, Delivered Lumens: 1015, LPW: 78.1, S/MH: 1.26, Test No: ISF 202635P7



CP Summary		Zonal Lumen Summary				Coefficients of Utilization										Cone of Light			Luminance (cd/sq.m)	
0°	Zone	Lumens	% Fixture	pf	pc	80%		20%		70%		50%		Mounting Height	Initial FC Center Beam	Beam Diameter	Average Luminance			
				pw	50%	30%	10%	50%	30%	10%	50%	30%	10%							
0°	0° - 30°	300	30%	0	119	119	119	116	116	116	111	111	111	6.0	10.6	16.7	0°	48,055		
5°	0° - 40°	489	48%	1	105	102	98	103	100	96	99	96	93	8.0	6.0	22.2	45°	44,652		
15°	0° - 60°	847	83%	2	93	86	81	91	85	80	87	82	78	10.0	3.8	27.8	55°	40,852		
25°	0° - 90°	1,015	100%	3	82	74	68	80	73	67	77	71	66	12.0	2.7	33.3	65°	33,831		
35°	90° - 180°	0	0%	4	73	64	58	71	63	57	69	62	57	14.0	1.9	38.9	75°	21,483		
45°	0° - 180°	1,015	100%	5	65	56	50	64	56	50	62	55	49				85°	6,835		
55°		186		6	59	50	44	58	49	43	56	49	43	Beam Angle: 108.5°						
65°		114		7	53	45	39	52	44	38	51	44	38	Field Angle: 151.9°						
75°		44		8	49	40	34	48	40	34	47	39	34							
85°		5		9	45	37	31	44	36	31	43	36	31							
90°		0		10	41	33	28	41	33	28	40	33	28							

**WF6 REG SWW5 90CRI\_3500K** Input Watts: 13.0, Delivered Lumens: 1032, LPW: 79.4, S/MH: 1.26, Test No: ISF 202635P8



CP Summary		Zonal Lumen Summary				Coefficients of Utilization										Cone of Light			Luminance (cd/sq.m)	
0°	Zone	Lumens	% Fixture	pf	pc	80%		20%		70%		50%		Mounting Height	Initial FC Center Beam	Beam Diameter	Average Luminance			
				pw	50%	30%	10%	50%	30%	10%	50%	30%	10%							
0°	0° - 30°	305	30%	0	119	119	119	116	116	116	111	111	111	6.0	10.8	16.7	0°	48,862		
5°	0° - 40°	497	48%	1	105	102	98	103	100	96	99	96	93	8.0	6.1	22.2	45°	45,401		
15°	0° - 60°	862	83%	2	93	86	81	91	85	80	87	82	78	10.0	3.9	27.8	55°	41,538		
25°	0° - 90°	1,032	100%	3	82	74	68	80	73	67	77	71	66	12.0	2.7	33.3	65°	34,398		
35°	90° - 180°	0	0%	4	73	64	58	71	63	57	69	62	57	14.0	2.0	38.9	75°	21,843		
45°	0° - 180°	1,032	100%	5	65	56	50	64	56	50	62	55	49				85°	6,950		
55°		189		6	59	50	44	58	49	43	56	49	43	Beam Angle: 108.5°						
65°		116		7	53	45	39	52	44	38	51	44	38	Field Angle: 151.9°						
75°		45		8	49	40	34	48	40	34	47	39	34							
85°		5		9	45	37	31	44	36	31	43	36	31							
90°		0		10	41	33	28	41	33	28	40	33	28							

# Juno® Juno Wafer™ LED Downlight Series

6" LED Regressed Wafer Switchable Downlight  
950 Lumens



## PHOTOMETRICS

Distribution Curve

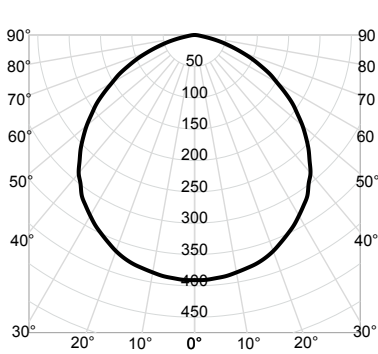
Distribution Data

Output Data

Coefficient of Utilization

Illuminance Data at 30" Above Floor for a Single Luminaire

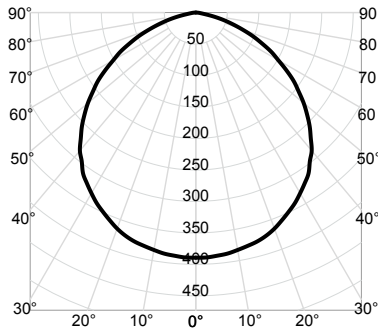
WF6 REG SWW5 90CRI\_4000K Input Watts: 13.0, Delivered Lumens: 1039, LPW: 79.9, S/MH: 1.26, Test No: ISF 202635P9



CP Summary		Zonal Lumen Summary				Coefficients of Utilization										Cone of Light			Luminance (cd/sq.m)	
0°	Zone	Lumens	% Fixture	pf	pc	80%			70%			50%				Mounting Height	Initial FC Center Beam	Beam Diameter	Average Luminance	
				pw	50%	30%	10%	50%	30%	10%	50%	30%	10%							
0°	0° - 30°	307	30%	0	119	119	119	116	116	116	111	111	111	6.0	10.9	16.7	0°	49,194		
5°	0° - 40°	501	48%	1	105	102	98	103	100	96	99	96	93	8.0	6.1	22.2	45°	45,710		
15°	0° - 60°	867	83%	2	93	86	81	91	85	80	87	82	78	10.0	3.9	27.8	55°	41,820		
25°	0° - 90°	1,039	100%	3	82	74	68	80	73	67	77	71	66	12.0	2.7	33.3	65°	34,632		
35°	90° - 180°	0	0%	4	73	64	58	71	63	57	69	62	57	14.0	2.0	38.9	75°	21,992		
45°	0° - 180°	1,039	100%	5	65	56	50	64	56	50	62	55	49				85°	6,997		
55°		191		6	59	50	44	58	49	43	56	49	43							
65°		116		7	53	45	39	52	44	38	51	44	38							
75°		45		8	49	40	34	48	40	34	47	39	34							
85°		5		9	45	37	31	44	36	31	43	36	31							
90°		0		10	41	33	28	41	33	28	40	33	28							

Beam Angle: 108.5°  
Field Angle: 151.9°

WF6 REG SWW5 90CRI\_5000K Input Watts: 13.0, Delivered Lumens: 1035, LPW: 79.6, S/MH: 1.26, Test No: ISF 202635P10



CP Summary		Zonal Lumen Summary				Coefficients of Utilization										Cone of Light			Luminance (cd/sq.m)	
0°	Zone	Lumens	% Fixture	pf	pc	80%			70%			50%				Mounting Height	Initial FC Center Beam	Beam Diameter	Average Luminance	
				pw	50%	30%	10%	50%	30%	10%	50%	30%	10%							
0°	0° - 30°	305	30%	0	119	119	119	116	116	116	111	111	111	6.0	10.8	16.7	0°	49,004		
5°	0° - 40°	499	48%	1	105	102	98	103	100	96	99	96	93	8.0	6.1	22.2	45°	45,533		
15°	0° - 60°	864	83%	2	93	86	81	91	85	80	87	82	78	10.0	3.9	27.8	55°	41,659		
25°	0° - 90°	1,035	100%	3	82	74	68	80	73	67	77	71	66	12.0	2.7	33.3	65°	34,499		
35°	90° - 180°	0	0%	4	73	64	58	71	63	57	69	62	57	14.0	2.0	38.9	75°	21,907		
45°	0° - 180°	1,035	100%	5	65	56	50	64	56	50	62	55	49				85°	6,970		
55°		190		6	59	50	44	58	49	43	56	49	43							
65°		116		7	53	45	39	52	44	38	51	44	38							
75°		45		8	49	40	34	48	40	34	47	39	34							
85°		5		9	45	37	31	44	36	31	43	36	31							
90°		0		10	41	33	28	41	33	28	40	33	28							

Beam Angle: 108.5°  
Field Angle: 151.9°