



# LED EA21-17W5000cec

Bulb Class: A21



## Product Description

**LED EA21-17W5000cec** delivers superior brightness, valuable energy savings, long lasting performance, and true color perception. These Omni-directional A21 LED bulbs are ideal for ambient lighting or general purpose applications due to its uniform \*Soft White light (3000K) and replace conventional 100 Watt incandescent light bulbs. Enjoy features such as: Instant on, dimming options, energy efficient, 90+CRI, damp rated, and enclosed fixture suitable.



**Estimated Energy Cost:** \$2.05 per year



\*Note: Design, features and specifications subject to change without notice. Some features may not be available on all models. For more information regarding dimmer compatibility please visit: [www.eurilighting.com](http://www.eurilighting.com) or call 1-888-743-5766

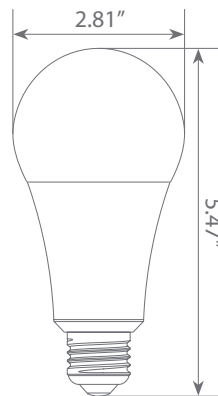
## Specifications

Input Power	Input Voltage	Lumen Output	Beam Angle	Center Beam	CCT
17 W	120V/60Hz	1600 lm	210°	N/A	3000 K
CRI	Luminous Efficacy	Power Factor	Input Current	Base/Cap	Lamp Lifespan
90	94 lm/W	0.9	0.15 A	E26	25,000 Hrs.

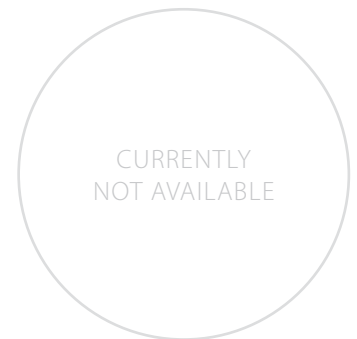
### Product Features

- Dimmable
- Enclosed Fixture Suitable
- Energy Efficient
- Damp Rated

### Product Dimensions



### Product Photometric Data



**Euri Lighting | A Division of IRTRONIX Inc.**

20900 Normandie Avenue Bldg. B, Torrance, CA 90502 | Tel: 310.787.1100 | Fax: 310.787.1166 | [www.eurilighting.com](http://www.eurilighting.com)  
©2020 Euri Lighting. All Rights Reserved



## LED EA21-17W5000cec

### Recommended Dimmers by Brand

---

**LEVITON:** 6631-LA, 603-6631-A, 6631-A

**LUTRON:** DV-603P, S-600, D-600PH-DK, TGCL-153PLH-WH,  
DV-603PR, DVW-600PH-WH, DV-603PH-WH, DV-600PH-WH,  
TG-600PH-IV, S-600-AL, D-600R-IV, DV-603PH-WH, S-603PH-WH

**GE:** 18024

**CTL:** DM600-12-3

**AH:** SDM3/1000/WHTTE, SDM/600/WHTTE