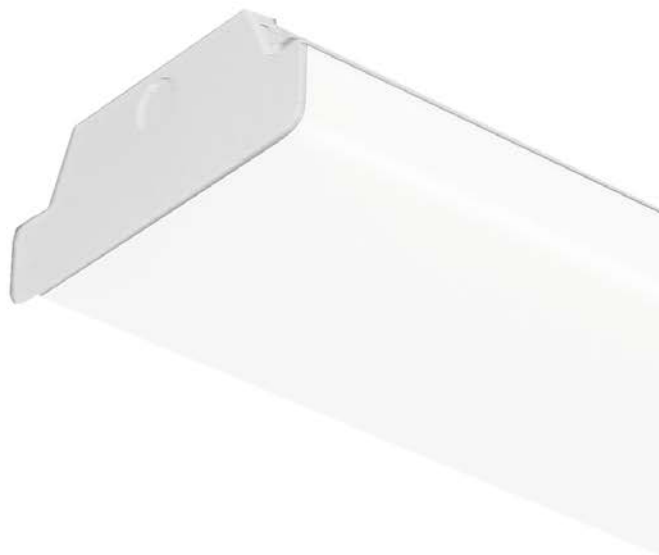


Features & Specifications



LED WRAPAROUND



INTENDED USE – These surface mounted PLT LED wraparound fixtures deliver light downwards for directional illumination. It consumes less power and lasts longer than their fluorescent equivalents, saving money on energy costs. The PLT wraparound fixtures can be used in a variety of locations around your home or business.

CONSTRUCTION – Galvanized steel housing with a low-glare frosted acrylic lens. White enamel finish.

OPTICS – High-performance LEDs maintain a 3,250 Lumen output at 3500K for 50,000 hours of use.

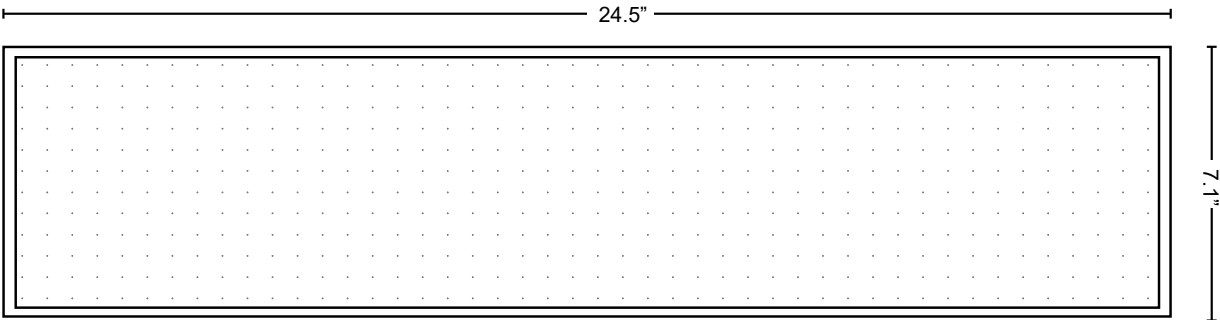
ELECTRICAL – Integral Seoul LED chips, Built-in Simon LED driver, Input voltage of 120-277 VAC. Eliminates issues commonly associated with ballast driven fixtures such as humming, flickering, and failures.

INSTALLATION – Refer to included installation instructions.

LISTINGS – UL Certified to safety standards for damp locations. Rated for -4°F to 113°F ambient temperature. DLC Listed - PLTM422112.

MOUNTING – Surface hardware included.

WARRANTY – 5-year warranty for wraparound fixture. PLT products that are damaged or defective will be repaired or replaced at PLT's choosing for a period of 5 years. Contact 1-800-624-4488 for more information.



Dimensions

Width: 7.1 in.

Length: 24.5 in.

Height: 2.8 in.

SKU #	Kelvin	Lumens	CRI	Wattage	Voltage	DLC?	Mounting	Life Hours	Warranty
PLT-90109	3500	3250	82	25	120-277	YES	SURFACE	50,000	5 Years