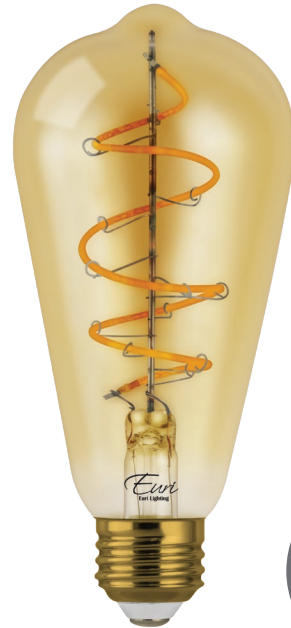
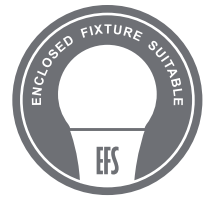


LED VST19-3020ad

Lamp Class: ST19 Amber Glass



Amber Glass



Product Description

LED VST19-3020ad delivers superior brightness, valuable energy savings and long lasting performance. LED Filaments along with heat-sink absence unmistakably mimic traditional bulb styles while providing greater light distribution. This ST19 Class LED bulb comes in 2200K CCT (*Warm White*) for charming and hospitable environments.



Estimated Energy Cost: \$0.54 per year

*Note: Design, features and specifications subject to change without notice. Some features may not be available on all models. Please visit www.eurilighting.com or call 1-888-743-5766 for more information.

Specifications

| Input Power | Input Voltage | Lumen Output | Beam Angle | Center Beam | CCT |
|-------------|---------------|--------------|------------|-------------|--------|
| 4.5 W | 120 V | 250 lm | 320° | N/A | 2200 K |

| CRI | Luminous Efficacy | Power Factor | Input Current | Base/Cap | Lamp Lifespan |
|-----|-------------------|--------------|---------------|----------|---------------|
| 80 | 55 lm/W | 0.7 | 0.05 A | E26 | 15,000 Hrs. |

Product Features & Benefits



Dimmable



Energy Efficient

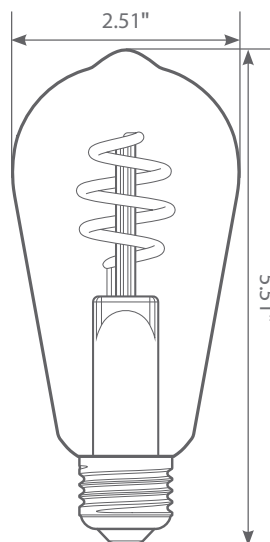


Enclosed Fixture Suitable

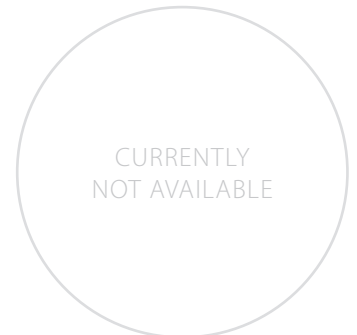


Wet Rated

Product Dimensions



Product Photometric Data



Euri Lighting | A Division of IRTRONIX Inc.



LED VST19-3020ad

RECOMMENDED DIMMERS BY BRAND

LUTRON: DV-603P 600W, S-600 600W, LGCL-153CL 600W, CTCL-153P-WH 600W, TGCL-153PH-WH 600W, TGCL-153PLH-WH 600W, DV-603PR 600W, S-600PR-WH 600W, DVWCL-153PH-WH 600W, DVW-600PH-WH 600W, DV-603PH-WH 600W, DV-600PH-WH 600W, S-603PGH-WH 600W, S-600H-WH 600W, D-600RH-DK 600W, G-600PH-WH 600W, CT-600PR-WH 600W, SCL-153P-WH 600W, D-600R-WH 600W, DVCL-153PH 600W, S-600-IV 600W, S-600-AL 600W, D-600R-IV 600W, DV-603PH-WH 600W, S-603PH-WH 600W, DVWCL-153PH-WHC, MACL-153M-WH, AYCL-153P-WH, S-600P-WH, MACL-153MR-WH, AY-600PH-WH, AYCL-153PH, DV-600P-WH, MACL-153MH-WH, DVCL-253PH, MSCL-OP153MH-WH, TGCL-153PH-WH, MACL-153MLH-WH, TG-603PGH-WH, DVCL-153P-WH, TG-600PNLH-WH, LECL-153PH-WH, SCL-153PH-WH, MACL-153MLRHW-WH, DVCL-153P-WH-3, DVELV-303P-WH, MAELV-600-WH, PD-6WCL-WH-P

LEVITON: 6684 600W, 6631-LA 600W, LIGHT ALMOND NO.6672 600W, 603-6631-A 600W, 6631-A 600W, WHITE NO.IPL06 600W, WHITE NO.6674 600W, NO.6681 600W, 6683-10Z 600W, IPI06-1LZ 600W, WHITE NO.6631 600W

LEGRAND: HCL453PTC

ADORNE: ADPD453LW2, ADWR703HW4

OLEGRAND: RHCL453PW

MAXXIMA: MEW-DM600

COOPER: DAL06P-C2-K

CTL: DM600-12-3/LED/WH 600

AH: SDM/600/WHTE 600W