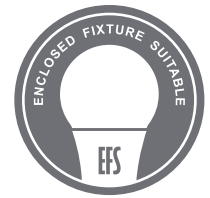


# LED VB10-3020ef-4

Lamp Class: B10 Frosted Glass



Frosted Glass



## Product Description

**LED** VB10-3020ef-4 delivers superior brightness, valuable energy savings and long lasting performance. LED Filaments along with heat-sink absence unmistakably mimic traditional bulb styles while providing greater light distribution. This B10 Class LED bulb comes in 2700K CCT (*Warm White*) for charming and hospitable environments.



**Estimated Energy Cost: \$0.54 per year**

## Specifications

Input Power	Input Voltage	Lumen Output	Beam Angle	Center Beam	CCT
4.5 W	120 V	450 lm	320°	N/A	2700 K

CRI	Luminous Efficacy	Power Factor	Input Current	Base/Cap	Lamp Lifespan
80	100 lm/W	0.7	0.045 A	E12	15,000 Hrs.

## Product Features & Benefits



Dimmable



Energy Efficient

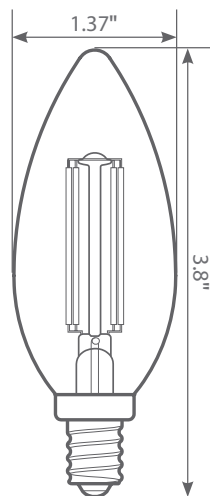


Enclosed Fixture Suitable

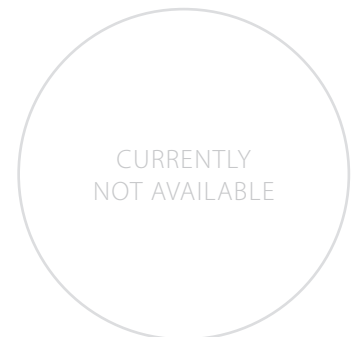


Wet Rated

## Product Dimensions



## Product Photometric Data



**B10 Class:**

**VB10-3020ef-4**

**RECOMMENDED DIMMERS BY BRAND**

**LUTRON:** DV-603P 600W, S-600 600W, CT-103P-WH 1000W, CTCL-153P-WH 600W, TGCL-153PLH-WH 600W, DV-603PR 600W, S-600PR-WH 600W, DVW-600PH-WH 600W, DV-600PH-WH 600W, S-603PGH-WH 600W, S-600H-WH 600W, D-600RH-DK 600W, TG-600PH-WH 600W, TG-600PH-IV 600W, CT-600:PR-WH 600W, D-600R-WH 600W, S-603PH-WH 600W, S-600P-WH, DV-600P-WH, SCL-153PH-WH, TG-603PGH-WH, DVCL-153P-WH, MAELV-600-WH

**LEVITON:** 6631-LA 600W, IPI06 600W, S-600P-WH, LIGHT

**ALMOND** NO.6672 600W, 603-6631-A 600W, WHITE NO.IPL06 600W, White/Ivory/Light Almond IPI10-1LZ 600W, IPI06-1LZ 600W, 6681

**LEGRAND:** RHCL453PW, HCL453PTC

**CTL:** DM600-12-3/LED/WH 600W

**AH:** SDM3/1000/WHTTE 1000W

**ALMOND:** LUXDM600-12 600W

**GE:** 18024 600W