



# LED VB10-3050cec-4

Lamp Class: B10 Clear Glass



Clear Glass



## Product Description

**LED** VB10-3050cec-4 delivers superior brightness, valuable energy savings and long lasting performance. LED Filaments along with heat-sink absence unmistakably mimic traditional bulb styles while providing greater light distribution. This B10 Class LED bulb comes in 5000K CCT (*CoolWhite*) for charming and hospitable environments.



**Estimated Energy Cost: \$0.66 per year**

## Specifications

Input Power	Input Voltage	Lumen Output	Beam Angle	Center Beam	CCT
5.5 W	120 V	500 lm	320°	N/A	5000 K

CRI	Luminous Efficacy	Power Factor	Input Current	Base/Cap	Lamp Lifespan
90	90 lm/W	0.7	0.065 A	E12	15,000 Hrs.

## Product Features & Benefits



Dimmable



Energy Efficient

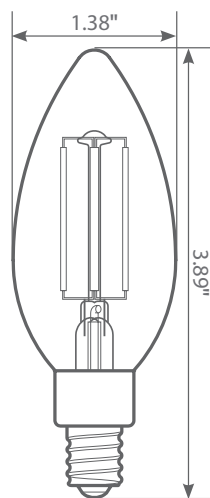


Enclosed Fixture Suitable

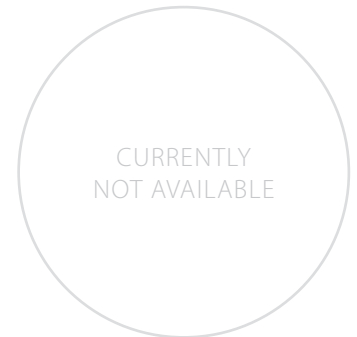


Wet Rated

## Product Dimensions



## Product Photometric Data



## **VB10-3020cec-4, VB10-3050cec-4**

### **RECOMMENDED DIMMERS BY BRAND**

**LUTRON:** DV-603P 600W, S-600 600W, LGCL-153CL 600W, CTCL-153P-WH 600W, TGCL-153PH-WH 600W, TGCL-153PLH-WH 600W, DV-603PR 600W, S-600PR-WH 600W, DVWCL-153PH-WH 600W, DVW-600PH-WH 600W, DV-603PH-WH 600W, DV-600PH-WH 600W, S-603PGH-WH 600W, S-600H-WH 600W, D-600RH-DK 600W, G-600PH-WH 600W, CT-600PR-WH 600W, SCL-153P-WH 600W, D-600R-WH 600W, DVCL-153PH 600W, S-600-IV 600W, S-600-AL 600W, D-600R-IV 600W, DV-603PH-WH 600W, S-603PH-WH 600W, DVWCL-153PH-WHC, MACL-153M-WH, AYCL-153P-WH, S-600P-WH, MACL-153MR-WH, AY-600PH-WH, AYCL-153PH, DV-600P-WH, MACL-153MH-WH, DVCL-253PH, MSCL-OP153MH-WH, TGCL-153PH-WH, MACL-153MLH-WH, TG-603PGH-WH, DVCL-153P-WH, TG-600PNLH-WH, LECL-153PH-WH, SCL-153PH-WH, MACL-153MLRHW-WH, DVCL-153P-WH-3, DVELV-303P-WH, MAELV-600-WH, PD-6WCL-WH-P

**LEVITON:** 6684 600W, 6631-LA 600W, LIGHT ALMOND NO.6672 600W, 603-6631-A 600W, 6631-A 600W, WHITE NO.IPL06 600W, WHITE NO.6674 600W, NO.6681 600W, 6683-10Z 600W, IPI06-1LZ 600W, WHITE NO.6631 600W

**ADORNE:** ADPD453LW2, ADWR703HW4

**ALMOND:** LUXDM600-12 600W

**CTL:** DM600-12-3/LED/WH 600

**AH:** SDM/600/WHTTE 600W

**OLEGRAND:** HCL453PTC

**MAXXIMA:** MEW-DM600

**COOPER:** DAL06P-C2-K