

# Features & Specifications

**PLT**  
&  
**AREA LIGHTS**

**INTENDED USE** – LED area lights are all-purpose site lighting fixtures that can be used for parking lots, car dealerships, outdoor stadiums, pathways, and parks. These LED fixtures will yield a significant reduction in energy consumption compared to standard HID systems and virtually eliminate ongoing maintenance expenses with a long-lasting lifespan. Designed for outdoor applications, the LED area light fixtures will provide reduced offsite visibility as well as effective security lighting.

**CONSTRUCTION** – Heavy-duty die cast aluminum housing with bronze polyester powder paint for corrosion-free durability. Resistant to rough vibrations and external impacts. Acrylic lens protects the LEDs and provides even light distribution. Housing is sealed with a silicone gasket, protecting against moisture and environmental contaminants (IP65 rated). Modular LED bricks wired in parallel for ease of maintenance.

**OPTICS** – High-performance LEDs maintain a 20,250 Lumen output at 5000K for 70,000 hours of use.  $\geq 70$  CRI.

Type V light distribution is designed for large open spaces like intersections, large parking lots, and roadway medians, type V light distributions direct light in a circular or square pattern in all directions around the fixture. This light distribution type is best suited for large open spaces like roadway medians and intersections, large parking lots, and anywhere an evenly spread pattern of light is required.

LED area lights are designed to have a more directional beam angle than metal halide and high pressure sodium fixtures so no light is lost within or above the fixture. These LED fixtures also do not lose Lumens in the same way as a HID fixture, meaning the brightness stays consistent longer and needs to be replaced far less frequently.

**ELECTRICAL** – Input voltage of 200-480 VAC, 50/60Hz. Includes 4kV surge protection standard. 10kV and 20kV optional. Features a Meanwell LED Driver.

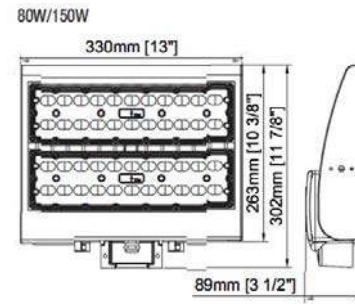
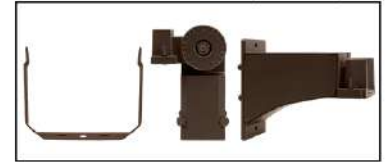
**INSTALLATION** – Versatile mount design can be used with different styles of mounts, including slipfitter, straight arm, trunnion, and u brackets. Mounts sold separately.

**LISTINGS** – UL Certified to safety standards for wet location. Rated for  $-40^{\circ}\text{C}$  to  $45^{\circ}\text{C}$  ambient temperature. IP-65 Rated. IK10 rated - protected against 20 joules of impact. DLC® Premium: PLTB955X22X3

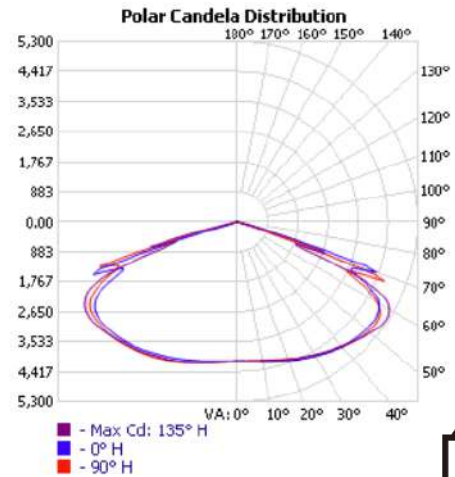
**WARRANTY** – 5-year warranty. PLT products that are damaged or defective will be repaired or replaced at PLT's choosing for a period of 5 years. Contact 1-800-624-4488 for more information.



Mounts Sold Separately



**Dimensions**  
Height: 13 in.  
Width: 11.9 in.  
Depth: 3.5 in.



SKU #	Kelvin	Lumens	CRI	Wattage	Voltage	DLC?	Mounting	Life Hours	Warranty
PLT-11559	5000K	20,250	70	150	200-480	YES	Pole or Wall	70,000	5 Years

# Photometrics

## ZONAL LUMEN SUMMARY

ZONE	LUMENS	% LAMP	% LUMINAIRE
0-30	3,670.5	17.9%	17.9%
0-40	6,612.8	32.3%	32.3%
0-60	14,971.8	73.1%	73.1%
60-90	5,399.5	26.4%	26.4%
70-100	1,253.4	6.1%	6.1%
90-120	37.8	0.2%	0.2%
0-90	20,371.3	99.4%	99.5%
90-180	112.4	0.5%	0.5%
0-180	20,483.7	100%	100%

## ROADWAY SUMMARY

CUTOFF CLASSIFICATION:	CUTOFF
DISTRIBUTION:	TYPE VS
MAX CD, 90 DEG VERT:	5.8
MAX CD, 80 TO <90 DEG:	195.6
	LUMENS % LAMP
DOWNWARD STREET SIDE:	10,197.2 49.8%
DOWNWARD HOUSE SIDE:	10,175.6 49.7%
DOWNWARD TOTAL:	20,372.8 99.5%
UPWARD STREET SIDE:	56.5 0.3%
UPWARD HOUSE SIDE:	55.9 0.3%
UPWARD TOTAL:	112.4 0.5%
TOTAL LUMENS:	20,485.2 100%

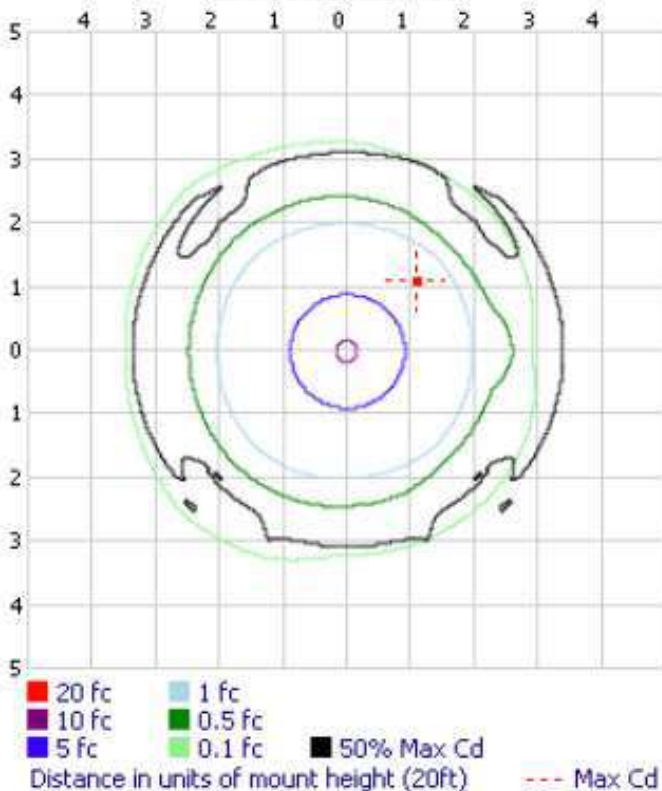
## LUMENS PER ZONE

ZONE	LUMENS	% TOTAL	ZONE	LUMENS	% TOTAL
0-10	395.2	1.9%	90-100	6.2	0%
10-20	1,209.6	5.9%	100-110	13.2	0.1%
20-30	2,065.7	10.1%	110-120	18.4	0.1%
30-40	2,942.3	14.4%	120-130	19.9	0.1%
40-50	3,805.8	18.6%	130-140	18.7	0.1%
50-60	4,553.2	22.2%	140-150	15.4	0.1%
60-70	4,152.4	20.3%	150-160	11.3	0.1%
70-80	1,207.2	5.9%	160-170	7.0	0%
80-90	40.0	0.2%	170-180	2.4	0%

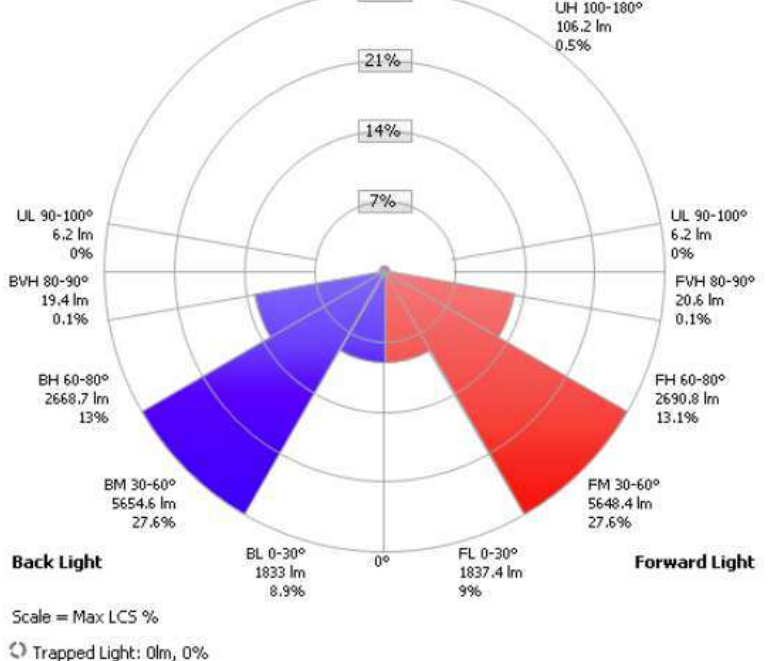
## LCS TABLE

BUG RATING	B4 - U3 - G2
FORWARD LIGHT	LUMENS LUMENS %
LOW(0-30):	1,837.4 9%
MEDIUM(30-60):	5,648.4 27.6%
HIGH(60-80):	2,690.8 13.1%
VERY HIGH(80-90):	20.6 0.1%
BACK LIGHT	
LOW(0-30):	1,833.0 8.9%
MEDIUM(30-60):	5,654.6 27.6%
HIGH(60-80):	2,668.7 13%
VERY HIGH(80-90):	19.4 0.1%
UPLIGHT	
LOW(90-100):	6.2 0%
HIGH(100-180):	106.2 0.5%
TRAPPED LIGHT:	0.000 0%

## Isofootcandle Plot



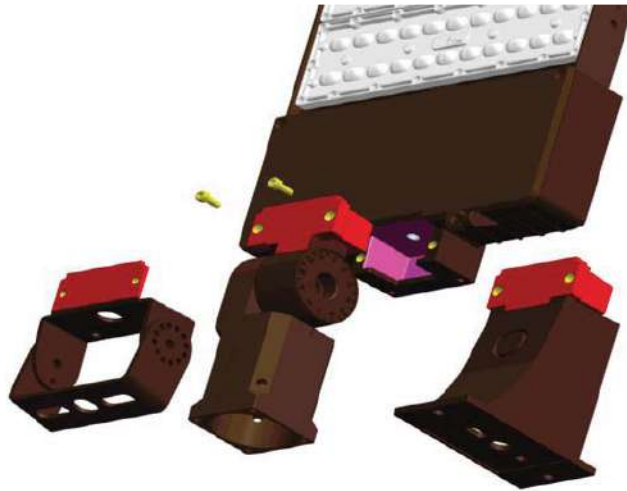
## LCS Graph



CANDELA TABLE - TYPE C																	
	0	22.5	45	67.5	90	112.5	135	157.5	180	202.5	225	247.5	270	292.5	315	337.5	360
0	4103	4103	4103	4103	4103	4103	4103	4103	4103	4103	4103	4103	4103	4103	4103	4103	4103
5	4126	4117	4114	4111	4104	4108	4112	4117	4117	4122	4128	4130	4134	4135	4131	4125	4126
10	4181	4172	4157	4150	4143	4146	4154	4167	4167	4179	4199	4205	4205	4207	4201	4192	4181
15	4261	4245	4229	4217	4203	4210	4219	4234	4237	4260	4283	4294	4299	4305	4295	4280	4261
20	4353	4339	4319	4309	4295	4303	4311	4327	4326	4355	4377	4399	4407	4412	4395	4377	4353
25	4453	4438	4415	4408	4414	4411	4406	4428	4425	4461	4483	4511	4528	4523	4498	4482	4453
30	4562	4540	4520	4521	4538	4532	4517	4538	4535	4567	4583	4619	4644	4634	4604	4582	4562
35	4676	4648	4633	4643	4668	4659	4637	4647	4653	4680	4697	4729	4751	4741	4718	4686	4676
40	4790	4758	4753	4771	4804	4788	4768	4762	4771	4792	4807	4837	4863	4847	4831	4789	4790
45	4867	4875	4903	4918	4920	4926	4921	4891	4867	4900	4926	4942	4969	4951	4939	4901	4867
50	4922	4969	5062	5046	5011	5056	5085	5023	4940	4985	5047	5054	5038	5053	5064	5009	4922
55	4964	5019	5178	5140	5041	5137	5218	5113	4987	5057	5163	5141	5078	5137	5183	5082	4964
60	4803	4921	5092	4981	4748	4948	5139	5033	4881	5006	5189	5134	5041	5107	5184	5051	4803
65	4006	4055	4138	3841	3620	3755	4136	4113	4162	4479	4875	4727	4571	4678	4884	4582	4006
70	4347	3132	2495	2915	2528	2833	2725	2757	4531	3278	2731	3255	3736	3455	2904	3135	4347
75	202	433	496	321	95	234	482	403	207	825	1634	1403	1146	1329	1877	1214	202
80	56	93	107	67	40	53	95	99	57	128	194	144	80	132	196	158	56
85	23	26	16	10	7	8	13	21	24	36	53	42	35	42	52	45	23
90	3	4	4	4	4	4	4	4	3	3	4	5	6	6	5	4	3
95	6	7	7	7	7	7	7	7	5	4	4	4	4	4	4	4	6
100	10	11	11	11	11	11	11	11	7	7	7	7	7	6	7	7	10
105	14	15	15	16	17	16	15	15	11	10	10	10	10	10	10	10	14
110	17	18	18	19	20	19	18	18	14	13	13	13	13	13	13	13	17
115	20	20	21	21	23	22	21	20	17	16	16	16	16	16	16	16	20
120	22	22	22	23	25	24	22	22	19	19	19	18	18	18	19	19	22
125	23	24	24	24	26	25	24	24	21	20	21	20	20	20			

	0	22.5	45	67.5	90	112.5	135	157.5	180	202.5	225	247.5	270	292.5	315	337.5	360
0	4103	4103	4103	4103	4103	4103	4103	4103	4103	4103	4103	4103	4103	4103	4103	4103	4103
5	4126	4117	4114	4111	4104	4108	4112	4117	4117	4122	4128	4130	4134	4135	4131	4125	4126
10	4181	4172	4157	4150	4143	4146	4154	4167	4167	4179	4199	4205	4205	4207	4201	4192	4181
15	4261	4245	4229	4217	4203	4210	4219	4234	4237	4260	4283	4294	4299	4305	4295	4280	4261
20	4353	4339	4319	4309	4295	4303	4311	4327	4326	4355	4377	4399	4407	4412	4395	4377	4353
25	4453	4438	4415	4408	4414	4411	4406	4428	4425	4461	4483	4511	4528	4523	4498	4482	4453
30	4562	4540	4520	4521	4538	4532	4517	4538	4535	4567	4583	4619	4644	4634	4604	4582	4562
35	4676	4648	4633	4643	4668	4659	4637	4647	4653	4680	4697	4729	4751	4741	4718	4686	4676
40	4790	4758	4753	4771	4804	4788	4768	4762	4771	4792	4807	4837	4863	4847	4831	4789	4790
45	4867	4875	4903	4918	4920	4926	4921	4891	4867	4900	4926	4942	4969	4951	4939	4901	4867
50	4922	4969	5062	5046	5011	5056	5085	5023	4940	4985	5047	5054	5038	5053	5064	5009	4922
55	4964	5019	5178	5140	5041	5137	5218	5113	4987	5057	5163	5141	5078	5137	5183	5082	4964
60	4803	4921	5092	4981	4748	4948	5139	5033	4881	5006	5189	5134	5041	5107	5184	5051	4803
65	4006	4055	4138	3841	3620	3755	4136	4113	4162	4479	4875	4727	4571	4678	4884	4582	4006
70	4347	3132	2495	2915	2528	2833	2725	2757	4531	3278	2731	3255	3736	3455	2904	3135	4347
75	202	433	496	321	95	234	482	403	207	825	1634	1403	1146	1329	1877	1214	202
80	56	93	107	67	40	53	95	99	57	128	194	144	80	132	196	158	56
85	23	26	16	10	7	8	13	21	24	36	53	42	35	42	52	45	23
90	3	4	4	4	4	4	4	4	3	3	4	5	6	6	5	4	3
95	6	7	7	7	7	7	7	7	5	4	4	4	4	4	4	4	6
100	10	11	11	11	11	11	11	11	7	7	7	7	7	6	7	7	10
105	14	15	15	16	17	16	15	15	11	10	10	10	10	10	10	10	14
110	17	18	18	19	20	19	18	18	14	13	13	13	13	13	13	13	17
115	20	20	21	21	23	22	21	20	17	16	16	16	16	16	16	16	20
120	22	22	22	23	25	24	22	22	19	19	19	18	18	18	19	19	22
125	23	24	24	24	26	25	24	24	21	20	21	20	20	20	21	21	23
130	24	24	24	25	27	26	24										

	0	22.5	45	67.5	90	112.5	135	157.5	180	202.5	225	247.5	270	292.5	315	337.5	360
0	4103	4103	4103	4103	4103	4103	4103	4103	4103	4103	4103	4103	4103	4103	4103	4103	4103
5	4126	4117	4114	4111	4104	4108	4112	4117	4117	4122	4128	4130	4134	4135	4131	4125	4126
10	4181	4172	4157	4150	4143	4146	4154	4167	4167	4179	4199	4205	4205	4207	4201	4192	4181
15	4261	4245	4229	4217	4203	4210	4219	4234	4237	4260	4283	4294	4299	4305	4295	4280	4261
20	4353	4339	4319	4309	4295	4303	4311	4327	4326	4355	4377	4399	4407	4412	4395	4377	4353
25	4453	4438	4415	4408	4414	4411	4406	4428	4425	4461	4483	4511	4528	4523	4498	4482	4453
30	4562	4540	4520	4521	4538	4532	4517	4538	4535	4567	4583	4619	4644	4634	4604	4582	4562
35	4676	4648	4633	4643	4668	4659	4637	4647	4653	4680	4697	4729	4751	4741	4718	4686	4676
40	4790	4758	4753	4771	4804	4788	4768	4762	4771	4792	4807	4837	4863	4847	4831	4789	4790
45	4867	4875	4903	4918	4920	4926	4921	4891	4867	4900	4926	4942	4969	4951	4939	4901	4867
50	4922	4969	5062	5046	5011	5056	5085	5023	4940	4985	5047	5054	5038	5053	5064	5009	4922
55	4964	5019	5178	5140	5041	5137	5218	5113	4987	5057	5163	5141	5078	5137	5183	5082	4964
60	4803	4921	5092	4981	4748	4948	5139	5033	4881	5006	5189	5134	5041	5107	5184	5051	4803
65	4006	4055	4138	3841	3620	3755	4136	4113	4162	4479	4875	4727	4571	4678	4884	4582	4006
70	4347	3132	2495	2915	2528	2833	2725	2757	4531	3278	2731	3255	3736	3455	2904	3135	4347
75	202	433	496	321	95	234	482	403	207	825	1634	1403	1146	1329	1877	1214	202
80	56	93	107	67	40	53	95	99	57	128	194	144	80	132	196	158	56
85	23	26	16	10	7	8	13	21	24	36	53	42	35	42	52	45	23
90	3	4	4	4	4	4	4	4	3	3	4	5	6	6	5	4	3
95	6	7	7	7	7	7	7	7	5	4	4	4	4	4	4	4	6
100	10	11	11	11	11	11	11	11	7	7	7	7	7	6	7	7	10
105	14	15	15	16	17	16	15	15	11	10	10	10	10	10	10	10	14
110	17	18	18	19	20	19	18	18	14	13	13	13	13	13	13	13	17
115	20	20	21	21	23	22	21	20	17	16	16	16	16	16	16	16	20
120	22	22	22	23	25	24	22	22	19	19	19	18	18	18	19	19	22
125	23	24	24	24	26	25	24	24	21	20	21	20	20	20	21	21	23
130	24	24	24	25	27	26	24	25	22	22	22	22	22	22	22	22	24
135	25	25	25	25	27	26	25	25	23	23	23	23	23	23	23	23	25
140	25	25	25	25	26	26	25	25	24	24	24	24	24	24	24	24	25
145	25	25	25	25	26	26	25	25	24	24	24	24	24	24	24	24	25
150	25	25	25	25	26	25	25	24	24	24	24	24	24	24	24	24	25
155	24	25	25	25	25	25	25	24	24	24	24	24	24	24	24	24	24
160	24	25	25	25	25	25	25	25	24	24	24	24	25	24	24	24	24
165	25	25	25	25	25	25	25	25	25	24	24	25	25	24	24	24	25
170	25	25	25	25	25	25	25	25	25	24	25	25	25	24	24	25	25
175	25	25	25	25	25	25	25	25	25	25	25	25	25	25	25	25	25
180	25	25	25	25	25	25	25	25	25	25	25	25	25	25	25	25	25



## Plug & Play Mount Design

LED: LUMILEDS SMD 3030. 135LPW for fixture.

Driver: 100-277VAC, 200-480VAC/50-60Hz

Light Distribution: TypeII/ III/TypeIV/V/ 90x120°

Surge Protection: 4KV standard, 20KV for option

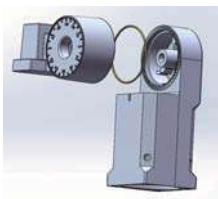
3G Vibration Test: Passed

Salt-Spray Test: 30,000hrs

IK10 Rated.

IP65 Rated.

Slip Fitter



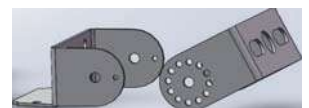
Straight Mount For Round Pole



Straight Mount for Square Pole



Trunnion



## Installation Remarks

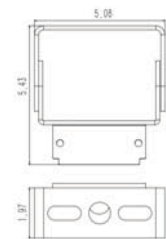
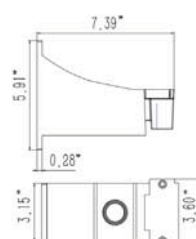
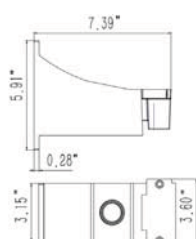
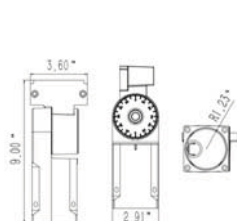
1. Installation angle: 0-90°
2. Max Pole size: 2-3/8"
3. Each rotation is 4°
4. Max Load Weight: 110lbs

1. Installation: wall mount or for Round Pole.
2. Pole size: 4",5",6"
3. Max Load Weight:110lbs

1. Installation: wall mount or for Round Pole.
2. Min Pole size: 3"x3"
3. Max Load Weight:110lbs

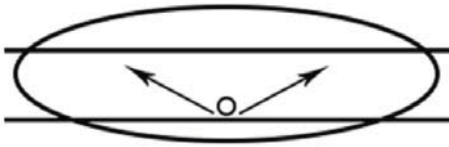
1. Installation angle: 0-180°
2. Max Pole size: 2-3/8"
3. Each rotation is 30°
4. Max Load Weight:110lbs

## Dimensions



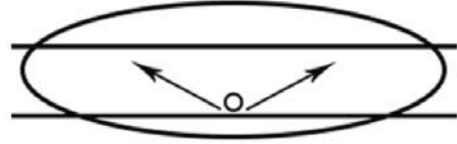


## Type II



The Type II distribution is used for wide walkways, on ramps and entrance roadways, as well as other long, narrow lighting. This type is meant for lighting larger areas and usually is located near the roadside. You'll find this type of lighting mostly on smaller side streets or jogging paths. Type II light distributions have a preferred lateral width of 25 degrees. They are generally applicable to luminaires located at or near the side of relatively narrow roadways, where the width of the roadway does not exceed 1.75 times the designed mounting height.

## Type III



The Type III distribution is meant for roadway lighting, general parking areas and other areas where a larger area of lighting is required. Type III lighting needs to be placed to the side of the area, allowing the light to project outward and fill the area. This produces a filling light flow. Type III light distributions have a preferred lateral width of 40 degrees. This distribution is intended for luminaires mounted at or near the side of medium width roadways or areas, where the width of the roadway or area does not exceed 2.75 times the mounting height.

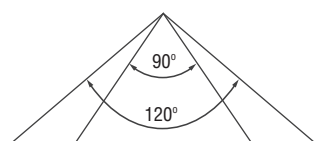
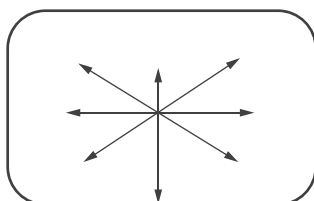
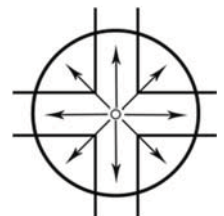
## Type IV



Type IV The Type IV distribution produces a semicircular light meant for mounting on the sides of buildings and walls. It's best for illuminating the perimeter of parking areas and businesses. The intensity of the Type IV lighting has the same intensity at angles from 90 degrees to 270 degrees. Type IV light distributions have a preferred lateral width of 60 degrees. This distribution is intended for side-of-road mounting and is generally used on wide roadways where the roadway width does not exceed 3.7 times the mounting height.

## Type V

Type V produces a circular distribution that has the same intensity at all angles. This distribution has a circular symmetry of candlepower that is essentially the same at all lateral angles. It is intended for luminaire mounting at or near center of roadways, center islands of parkway, and intersections. It is also meant for large, commercial parking lot lighting as well as areas where sufficient, evenly distributed light is necessary



## 90x120°

90x120° distribution is meant for flood light luminaires and is ideal for large open areas, building outside areas, stadiums, parks, billboards, etc.



Parking Lots



Campuses



Auto Dealerships

## Packing Dimensions

Model	Case Qty (PCS)	Slip Fitter		Straight Mount		Trunnion		Size(cm)	20GP (PCS)	40GP (PCS)	40HQ (PCS)
		N.W(KG)	G.W(KG)	N.W(KG)	G.W(KG)	N.W(KG)	G.W(KG)				
80W/120W 150W	1	6.4	7.3	6.1	7.0	5.9	6.8	49.5*38.5*12.5cm	1000	2150	2500
220/300W	1	10.1	11.1	6.7	7.5	6.5	7.3	69*38.5*12.5cm	960	2070	2400

U Bracket	Case Qty (PCS)	N.W(KG)	G.W(KG)	Size(cm)
80W/120W 150W	1	5.8	6.6	38.5*38.5*12.5cm
220/300W	1	10.0	10.8	59*38.5*12.5cm

