

# Features & Specifications

**PLT**  
&  
**AREA LIGHTS**

**INTENDED USE** – LED area lights are all-purpose site lighting fixtures that can be used for parking lots, car dealerships, outdoor stadiums, pathways, and parks. These LED fixtures will yield a significant reduction in energy consumption compared to standard HID systems and virtually eliminate ongoing maintenance expenses with a long-lasting lifespan. Designed for outdoor applications, the LED area light fixtures will provide reduced off-site visibility as well as effective security lighting.

**CONSTRUCTION** – Heavy-duty die cast aluminum housing with bronze polyester powder paint for corrosion-free durability. Resistant to rough vibrations and external impacts. Acrylic lens protects the LEDs and provides even light distribution. Housing is sealed with a silicone gasket, protecting against moisture and environmental contaminants (IP65 rated). Modular LED bricks wired in parallel for ease of maintenance.

**OPTICS** – High-performance LEDs maintain a 40,500 Lumen output at 5000K for 70,000 hours of use.  $\geq 70$  CRI.

Type V light distribution is designed for large open spaces like intersections, large parking lots, and roadway medians, type V light distributions direct light in a circular or square pattern in all directions around the fixture. This light distribution type is best suited for large open spaces like roadway medians and intersections, large parking lots, and anywhere an evenly spread pattern of light is required.

LED area lights are designed to have a more directional beam angle than metal halide and high pressure sodium fixtures so no light is lost within or above the fixture. These LED fixtures also do not lose Lumens in the same way as a HID fixture, meaning the brightness stays consistent longer and needs to be replaced far less frequently.

**ELECTRICAL** – Input voltage of 120-277 VAC, 50/60Hz. Includes 4kV surge protection standard. 10kV and 20kV optional. Includes a shorting cap and photocell receptacle. Features a Meanwell LED Driver.

**INSTALLATION** – Versatile mount design can be used with different styles of mounts, including slipfitter, straight arm, trunnion, and u brackets. Mounts sold separately.

**LISTINGS** – UL Certified to safety standards for wet location. Rated for -40°F - +104°F ambient temperature. IP-65 Rated. IK10 rated - protected against 20 joules of impact. DLC® Premium: PLTB975X21X2

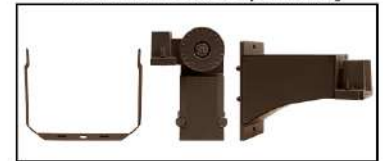
**WARRANTY** – 5-year warranty. PLT products that are damaged or defective will be repaired or replaced at PLT's choosing for a period of 5 years. Contact 1-800-624-4488 for more information.

**ADD-ONS** – Pair with timers, photocells, and motion sensors for hassle free bright night time lighting and energy savings during the day. If pairing with a photocell, it must be LED compatible in order to operate properly. If using a conventional photocell, be sure to replace it with one rated for use with LEDs. While conventional light sensors will still work with LED fixtures at first, they will burn out prematurely. The same is true for motion sensors.

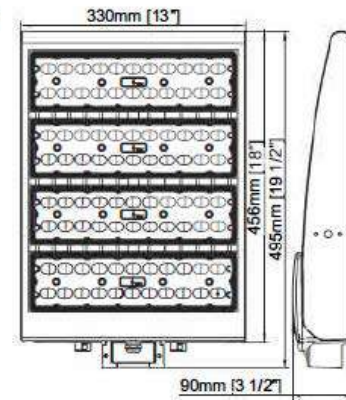
If you live in the northern hemisphere, your photocells should face north whenever possible. North-facing light sensors allow for the most balanced on/off schedule based on the arc of the sun. If pointed west, it will turn on and off late and vice versa for east-facing light sensors. Photocells facing the south will be exposed to the most direct sunlight which can burn out the components and cause premature failure. If you want your lights to come on early or late, we recommend pointing the light sensor northeast or northwest, respectfully. The opposite is true south of the equator.



Mounts Sold Separately



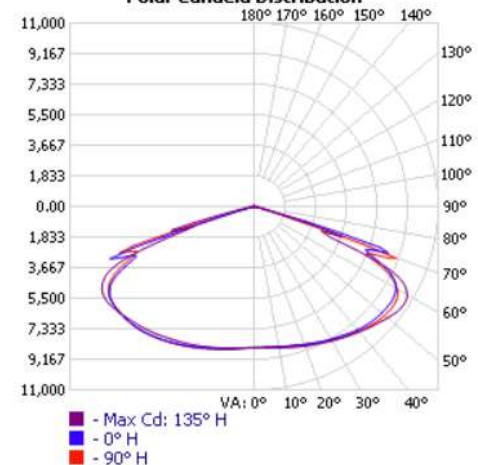
220W/300W



Dimensions

Height: 19.5 in.  
Width: 13 in.  
Depth: 3.5 in.

Polar Candela Distribution



SKU #	Kelvin	Lumens	CRI	Wattage	Voltage	DLC?	Mounting	Life Hours	Warranty
PLT-11557	5000K	40,500	70	300	120-277	YES	Pole or Wall	70,000	5 Years

# Photometrics

## ZONAL LUMEN SUMMARY

ZONE	LUMENS	% LAMP	% LUMINAIRE
0-30	7,522.2	17.9%	17.9%
0-40	13,523.3	32.2%	32.2%
0-60	30,516.3	72.6%	72.6%
60-90	11,278.3	26.8%	26.8%
70-100	2,727.6	6.5%	6.5%
90-120	76.4	0.2%	0.2%
0-90	41,794.6	99.5%	99.5%
90-180	223.8	0.5%	0.5%
0-180	42,018.4	100%	100%

## LUMENS PER ZONE

ZONE	LUMENS	% TOTAL	ZONE	LUMENS	% TOTAL
0-10	815.2	1.9%	90-100	13.0	0%
10-20	2,484.3	5.9%	100-110	26.9	0.1%
20-30	4,222.8	10.0%	110-120	36.5	0.1%
30-40	6,001.1	14.3%	120-130	39.4	0.1%
40-50	7,747.5	18.4%	130-140	36.9	0.1%
50-60	9,245.5	22.0%	140-150	30.4	0.1%
60-70	8,563.6	20.4%	150-160	22.3	0.1%
70-80	2,616.6	6.2%	160-170	13.8	0%
80-90	98.0	0.2%	170-180	4.7	0%

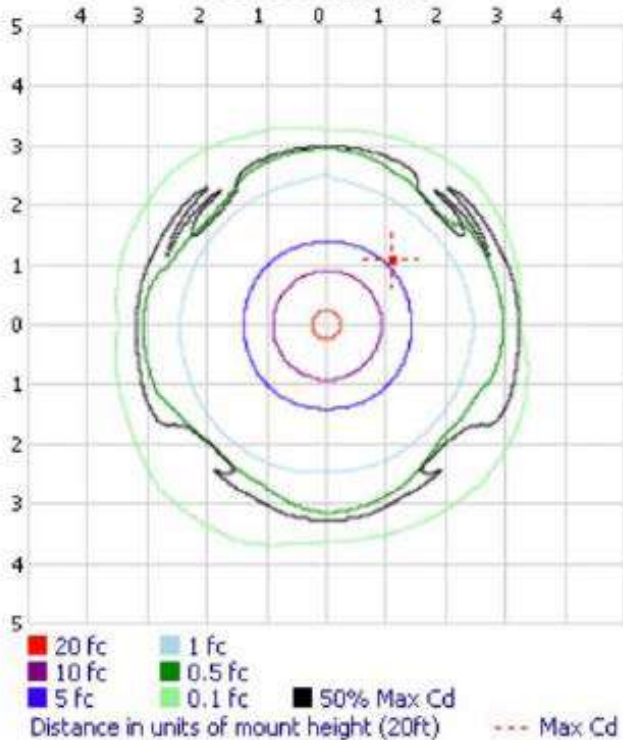
## ROADWAY SUMMARY

CUTOFF CLASSIFICATION:	CUTOFF
DISTRIBUTION:	TYPE VS
MAX CD, 90 DEG VERT:	11.3
MAX CD, 80 TO <90 DEG:	481.9
	LUMENS % LAMP
DOWNWARD STREET SIDE:	20,991.1 50%
DOWNWARD HOUSE SIDE:	20,806.4 49.5%
DOWNWARD TOTAL:	41,797.5 99.5%
UPWARD STREET SIDE:	112.4 0.3%
UPWARD HOUSE SIDE:	111.5 0.3%
UPWARD TOTAL:	223.9 0.5%
TOTAL LUMENS:	42,021.4 100%

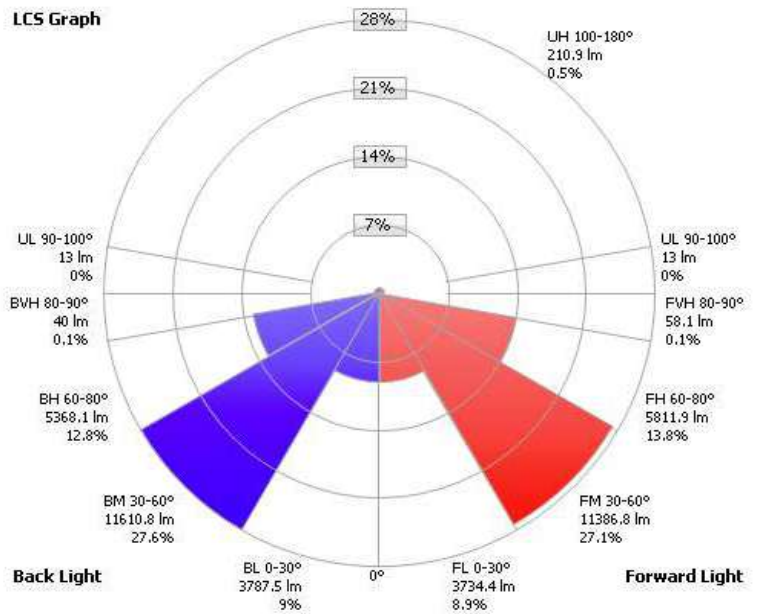
## LCS TABLE

BUG RATING	B5 - U3 - G3
FORWARD LIGHT	LUMENS LUMENS %
LOW(0-30):	3,734.4 8.9%
MEDIUM(30-60):	11,386.8 27.1%
HIGH(60-80):	5,811.9 13.8%
VERY HIGH(80-90):	58.1 0.1%
BACK LIGHT	
LOW(0-30):	3,787.5 9%
MEDIUM(30-60):	11,610.8 27.6%
HIGH(60-80):	5,368.1 12.8%
VERY HIGH(80-90):	40.0 0.1%
UPLIGHT	
LOW(90-100):	13.0 0%
HIGH(100-180):	210.9 0.5%
TRAPPED LIGHT:	0.000 0%

## Isofootcandle Plot

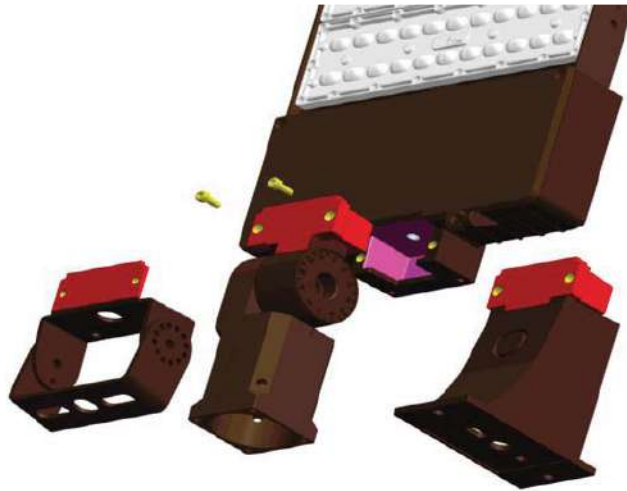


## LCS Graph



Trapped Light: 0lm, 0%

CANDELA TABLE - TYPE C																	
	0	22.5	45	67.5	90	112.5	135	157.5	180	202.5	225	247.5	270	292.5	315	337.5	360
0	8464	8464	8464	8464	8464	8464	8464	8464	8464	8464	8464	8464	8464	8464	8464	8464	8464
5	8470	8455	8456	8457	8466	8490	8506	8529	8533	8545	8553	8542	8535	8522	8506	8486	8470
10	8538	8530	8514	8512	8528	8572	8604	8648	8659	8683	8712	8695	8678	8647	8619	8581	8538
15	8658	8629	8607	8607	8628	8681	8729	8791	8819	8847	8869	8860	8839	8811	8761	8711	8658
20	8802	8773	8749	8761	8787	8847	8897	8979	9012	9045	9060	9060	9044	8998	8923	8860	8801
25	8978	8952	8906	8937	9004	9047	9075	9184	9231	9264	9261	9268	9267	9207	9106	9031	8978
30	9186	9139	9091	9133	9240	9274	9297	9417	9455	9493	9461	9472	9499	9421	9285	9217	9186
35	9398	9352	9301	9363	9491	9520	9534	9640	9710	9733	9693	9700	9721	9630	9503	9416	9398
40	9631	9574	9530	9604	9751	9778	9792	9875	9948	9963	9919	9917	9930	9836	9731	9627	9631
45	9830	9805	9811	9887	9993	10040	10086	10122	10119	10155	10154	10122	10121	10024	9950	9849	9830
50	9937	9989	10110	10146	10171	10278	10396	10356	10221	10304	10406	10328	10212	10190	10178	10080	9937
55	9991	10094	10396	10358	10221	10422	10667	10505	10252	10382	10630	10497	10239	10290	10404	10248	9991
60	9781	10016	10436	10290	9874	10196	10560	10337	9958	10189	10581	10403	10051	10180	10446	10227	9781
65	8640	9010	9419	8933	8191	8472	8913	8567	8502	8829	9583	9198	8946	9187	9796	9550	8640
70	7701	6886	4421	5106	9016	6445	4302	5544	9153	6606	4142	5544	7856	6879	5723	6511	7701
75	1116	1777	2025	1441	410	863	1180	980	340	1111	2006	1721	1270	1882	3696	3422	1116
80	144	291	368	252	131	159	242	219	115	224	334	264	161	254	458	482	144
85	62	85	90	51	41	38	40	47	46	67	88	74	66	84	124	140	62
90	7	7	8	7	7	8	8	8	6	6	6	6	7	7	9	11	7
95	12	13	13	13	14	14	14	15	11	10	10	10	10	9	9	9	12
100	20	20	21	21	21	22	22	22	16	16	16	16	15	15	15	15	20
105	28	28	29	29	30	30	30	30	23	23	22	22	22	22	22	21	28
110	35	35	36	36	37	37	36	36	28	28	28	28	28	28	28	27	35
115	40	40	40	40	43	41	40	40	34	33	33	33	34	33	33	32	40
120	44	44	44	44	47	45	44	44	38	38	38	38	38	38	38	37	44
125	47	46	46	47	49	47	46	46	41	41	41	41	43	41	41	41	47
130	48	48	48	49	52	50	48	47	44	44	44	44	46	44	44	44	48
135	49	49	49	50	53	51	49	48	45	45	46	46	48	46	46	46	49
140	49	49	49	50	53	51	49	48	46	46	47	47	49	48	48	47	49
145	49	49	49	50	52	51	49	48	46	46	47	47	49	48	48	47	49
150	49	49	49	50	51	50	48	48	46	46	46	47	48	48	48	48	49
155	49	49	49	49	50	50	48	48	47	46	46	47	48	47	48	48	49
160	49	49	49	50	50	50	48	48	47	46	47	48	49	48	48	48	49
165	49	50	50	50	50	50	49	49	48	47	48	48	49	48	49	49	49
170	50	50	50	49	50	50	49	49	49	48	48	49	50	49	49	49	50
175	50	50	49	49	50	49	49	49	49	49	49	49	50	49	49	49	50
180	50	50	50	50	50	50	50	50	50	50	50	50	50	50	50	50	50



## Plug & Play Mount Design

LED: LUMILEDS SMD 3030. 135LPW for fixture.

Driver: 100-277VAC, 200-480VAC/50-60Hz

Light Distribution: TypeII/ III/TypeIV/V/ 90x120°

Surge Protection: 4KV standard, 20KV for option

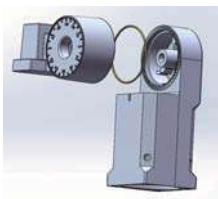
3G Vibration Test: Passed

Salt-Spray Test: 30,000hrs

IK10 Rated.

IP65 Rated.

Slip Fitter



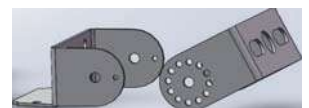
Straight Mount For Round Pole



Straight Mount for Square Pole



Trunnion



## Installation Remarks

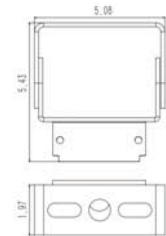
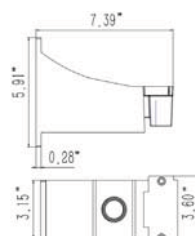
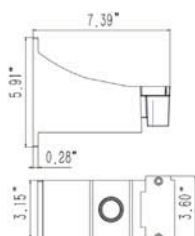
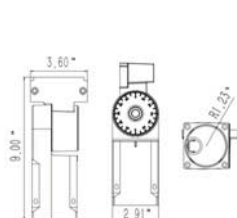
1. Installation angle: 0-90°
2. Max Pole size: 2-3/8"
3. Each rotation is 4°
4. Max Load Weight: 110lbs

1. Installation: wall mount or for Round Pole.
2. Pole size: 4",5",6"
3. Max Load Weight:110lbs

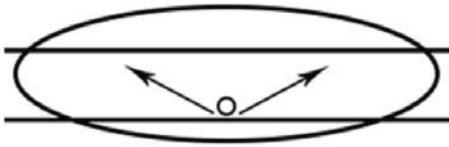
1. Installation: wall mount or for Round Pole.
2. Min Pole size: 3"x3"
3. Max Load Weight:110lbs

1. Installation angle: 0-180°
2. Max Pole size: 2-3/8"
3. Each rotation is 30°
4. Max Load Weight:110lbs

## Dimensions

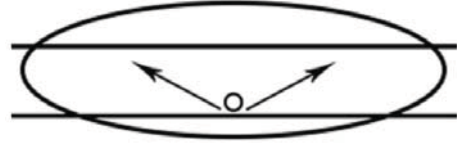


## Type II



The Type II distribution is used for wide walkways, on ramps and entrance roadways, as well as other long, narrow lighting. This type is meant for lighting larger areas and usually is located near the roadside. You'll find this type of lighting mostly on smaller side streets or jogging paths. Type II light distributions have a preferred lateral width of 25 degrees. They are generally applicable to luminaires located at or near the side of relatively narrow roadways, where the width of the roadway does not exceed 1.75 times the designed mounting height.

## Type III



The Type III distribution is meant for roadway lighting, general parking areas and other areas where a larger area of lighting is required. Type III lighting needs to be placed to the side of the area, allowing the light to project outward and fill the area. This produces a filling light flow. Type III light distributions have a preferred lateral width of 40 degrees. This distribution is intended for luminaires mounted at or near the side of medium width roadways or areas, where the width of the roadway or area does not exceed 2.75 times the mounting height.

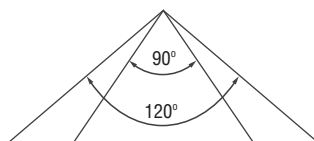
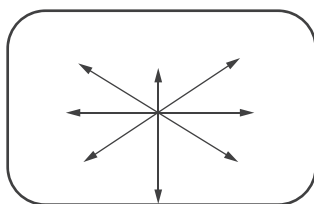
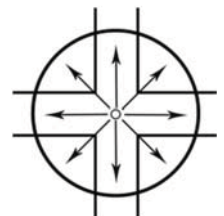
## Type IV



Type IV The Type IV distribution produces a semicircular light meant for mounting on the sides of buildings and walls. It's best for illuminating the perimeter of parking areas and businesses. The intensity of the Type IV lighting has the same intensity at angles from 90 degrees to 270 degrees. Type IV light distributions have a preferred lateral width of 60 degrees. This distribution is intended for side-of-road mounting and is generally used on wide roadways where the roadway width does not exceed 3.7 times the mounting height.

## Type V

Type V produces a circular distribution that has the same intensity at all angles. This distribution has a circular symmetry of candlepower that is essentially the same at all lateral angles. It is intended for luminaire mounting at or near center of roadways, center islands of parkway, and intersections. It is also meant for large, commercial parking lot lighting as well as areas where sufficient, evenly distributed light is necessary



## 90x120°

90x120° distribution is meant for flood light luminaires and is ideal for large open areas, building outside areas, stadiums, parks, billboards, etc.





Parking Lots



Campuses



Auto Dealerships

