

Features & Specifications

PLT & AREA LIGHTS

INTENDED USE – LED area lights are all-purpose site lighting fixtures that can be used for parking lots, car dealerships, outdoor stadiums, pathways, and parks. These LED fixtures will yield a significant reduction in energy consumption compared to standard HID systems and virtually eliminate ongoing maintenance expenses with a long-lasting lifespan. Designed for outdoor applications, the LED area light fixtures will provide reduced offsite visibility as well as effective security lighting.

CONSTRUCTION – Heavy-duty die cast aluminum housing with bronze polyester powder paint for corrosion-free durability. Resistant to rough vibrations and external impacts. Acrylic lens protects the LEDs and provides even light distribution. Housing is sealed with a silicone gasket, protecting against moisture and environmental contaminants (IP65 rated). Modular LED bricks wired in parallel for ease of maintenance.

OPTICS – High-performance LEDs maintain a 29,700 Lumen output at 4000K for 70,000 hours of use. ≥ 70 CRI.

Type V light distribution is designed for large open spaces like intersections, large parking lots, and roadway medians, type V light distributions direct light in a circular or square pattern in all directions around the fixture. This light distribution type is best suited for large open spaces like roadway medians and intersections, large parking lots, and anywhere an evenly spread pattern of light is required.

LED area lights are designed to have a more directional beam angle than metal halide and high pressure sodium fixtures so no light is lost within or above the fixture. These LED fixtures also do not lose Lumens in the same way as a HID fixture, meaning the brightness stays consistent longer and needs to be replaced far less frequently.

ELECTRICAL – Input voltage of 120-277 VAC, 50/60Hz. Includes 4kV surge protection standard. 10kV and 20kV optional. Includes a shorting cap and photocell receptacle. Features a Meanwell LED Driver.

INSTALLATION – Versatile mount design can be used with different styles of mounts, including slipfitter, straight arm, trunnion, and u brackets. Mounts sold separately.

LISTINGS – UL Certified to safety standards for wet location. Rated for -40°C to 45°C ambient temperature. IP-65 Rated. IK10 rated - protected against 20 joules of impact. DesignLights Consortium® (DLC) qualified product. DLC Part Number @: PLTB9A3X21X2.

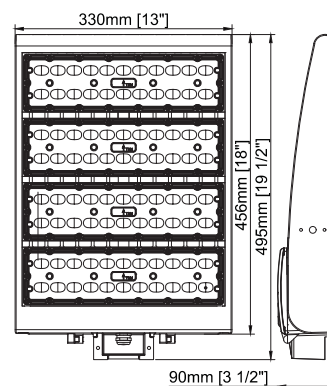
WARRANTY – 5-year warranty. PLT products that are damaged or defective will be repaired or replaced at PLT's choosing for a period of 5 years. Contact 1-800-624-4488 for more information.

ADD-ONS – Pair with timers, photocells, and motion sensors for hassle free bright night time lighting and energy savings during the day. If pairing with a photocell, it must be LED compatible in order to operate properly. If using a conventional photocell, be sure to replace it with one rated for use with LEDs. While conventional light sensors will still work with LED fixtures at first, they will burn out prematurely. The same is true for motion sensors.

If you live in the northern hemisphere, your photocells should face north whenever possible. North-facing light sensors allow for the most balanced on/off schedule based on the arc of the sun. If pointed west, it will turn on and off late and vice versa for east-facing light sensors. Photocells facing the south will be exposed to the most direct sunlight which can burn out the components and cause premature failure. If you want your lights to come on early or late, we recommend pointing the light sensor northeast or northwest, respectfully. The opposite is true south of the equator.



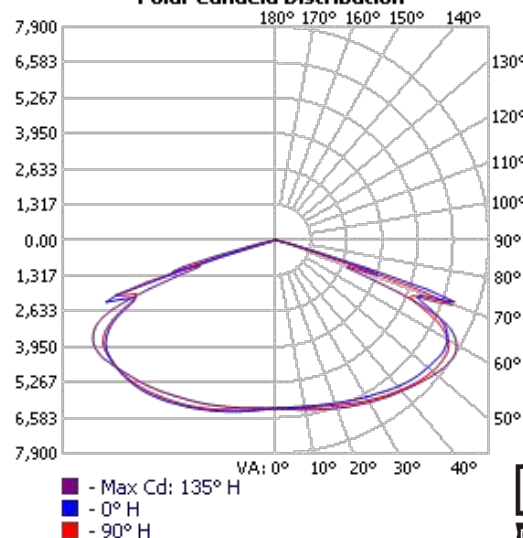
Mounts Sold Separately



Dimensions

Height: 19.5 in.
Width: 13 in.
Depth: 3.5 in.

Polar Candela Distribution



SKU #	Kelvin	Lumens	CRI	Wattage	Voltage	DLC?	Mounting	Life Hours	Warranty
PLT-11551	4000	29,700	70	220	120-277	Yes	Pole or Wall	70,000	5 Years

ZONAL LUMEN SUMMARY

ZONE	LUMENS	% LAMP	% LUMINAIRE
0-30	5,550.6	17.9%	17.9%
0-40	9,984.1	32.1%	32.1%
0-60	22,561.3	72.6%	72.6%
60-90	8,349.5	26.9%	26.9%
70-100	2,023.8	6.5%	6.5%
90-120	56.2	0.2%	0.2%
0-90	30,910.8	99.5%	99.5%
90-180	164.9	0.5%	0.5%
0-180	31,075.7	100%	100%

LUMENS PER ZONE

ZONE	LUMENS	% TOTAL	ZONE	LUMENS	% TOTAL
0-10	600.7	1.9%	90-100	9.5	0%
10-20	1,832.8	5.9%	100-110	19.8	0.1%
20-30	3,117.1	10.0%	110-120	26.9	0.1%
30-40	4,433.5	14.3%	120-130	29.0	0.1%
40-50	5,730.8	18.4%	130-140	27.2	0.1%
50-60	6,846.4	22.0%	140-150	22.4	0.1%
60-70	6,335.1	20.4%	150-160	16.4	0.1%
70-80	1,941.0	6.2%	160-170	10.2	0%
80-90	73.3	0.2%	170-180	3.5	0%

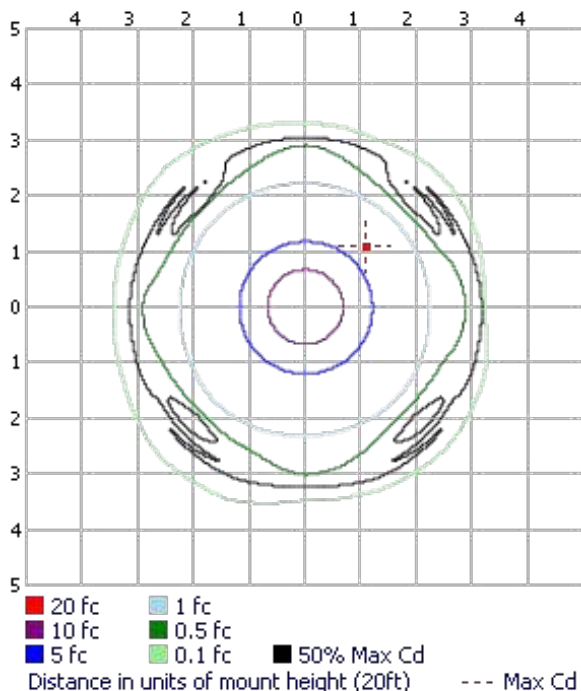
ROADWAY SUMMARY

CUTOFF CLASSIFICATION:	CUTOFF
DISTRIBUTION:	TYPE VS
MAX CD, 90 DEG VERT:	6.1
MAX CD, 80 TO <90 DEG:	341.7
	LUMENS % LAMP
DOWNWARD STREET SIDE:	15,535.2 50%
DOWNWARD HOUSE SIDE:	15,377.8 49.5%
DOWNWARD TOTAL:	30,913.0 99.5%
UPWARD STREET SIDE:	82.6 0.3%
UPWARD HOUSE SIDE:	82.4 0.3%
UPWARD TOTAL:	165.0 0.5%
TOTAL LUMENS:	31,078.0 100%

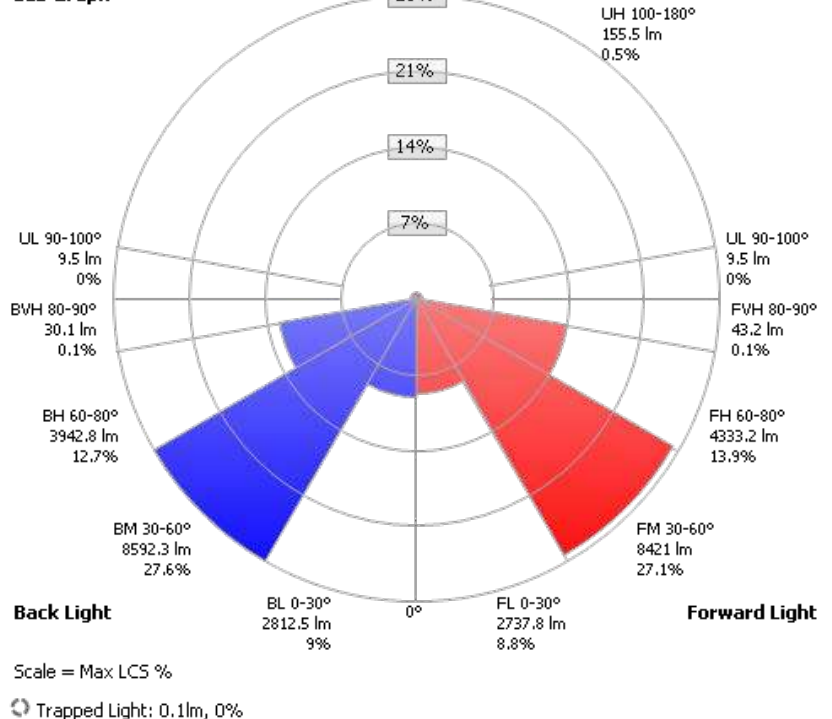
LCS TABLE

BUG RATING	B5 - U3 - G2
FORWARD LIGHT	LUMENS LUMENS %
LOW(0-30):	2,737.8 8.8%
MEDIUM(30-60):	8,421.0 27.1%
HIGH(60-80):	4,333.2 13.9%
VERY HIGH(80-90):	43.2 0.1%
BACK LIGHT	LUMENS LUMENS %
LOW(0-30):	2,812.5 9%
MEDIUM(30-60):	8,592.3 27.6%
HIGH(60-80):	3,942.8 12.7%
VERY HIGH(80-90):	30.1 0.1%
UPLIGHT	LUMENS LUMENS %
LOW(90-100):	9.5 0%
HIGH(100-180):	155.5 0.5%
TRAPPED LIGHT:	0.1 0%

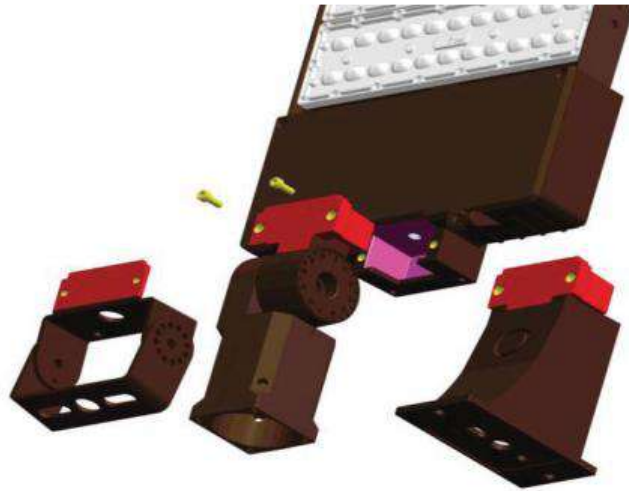
Isofootcandle Plot



LCS Graph



CANDELA TABLE - TYPE C																	
	0	22.5	45	67.5	90	112.5	135	157.5	180	202.5	225	247.5	270	292.5	315	337.5	360
0	6232	6232	6232	6232	6232	6232	6232	6232	6232	6232	6232	6232	6232	6232	6232	6232	6232
5	6217	6210	6213	6225	6243	6262	6281	6301	6308	6314	6313	6298	6288	6267	6245	6232	6217
10	6252	6250	6249	6263	6294	6344	6376	6422	6431	6444	6452	6430	6393	6354	6312	6277	6252
15	6324	6309	6312	6337	6380	6443	6486	6544	6569	6584	6580	6557	6511	6462	6403	6362	6324
20	6424	6410	6418	6451	6509	6571	6624	6695	6721	6739	6732	6705	6663	6587	6515	6460	6424
25	6552	6540	6534	6593	6669	6717	6764	6854	6888	6906	6880	6857	6829	6748	6646	6587	6552
30	6707	6683	6675	6739	6851	6888	6931	7025	7048	7068	7029	7018	6994	6904	6777	6723	6707
35	6871	6849	6847	6935	7043	7068	7105	7193	7233	7243	7197	7182	7162	7061	6944	6881	6871
40	7065	7024	7034	7126	7240	7257	7283	7354	7399	7403	7356	7334	7320	7222	7128	7050	7065
45	7238	7228	7264	7344	7424	7459	7488	7508	7511	7538	7521	7477	7463	7372	7308	7237	7238
50	7350	7408	7508	7554	7565	7637	7706	7657	7562	7626	7686	7621	7531	7524	7501	7429	7350
55	7447	7542	7779	7727	7622	7750	7865	7709	7536	7645	7825	7705	7543	7633	7715	7597	7447
60	7355	7573	7862	7703	7378	7603	7748	7505	7261	7437	7720	7586	7393	7571	7777	7627	7355
65	6616	6908	7206	6663	6088	6300	6575	6250	6303	6449	6857	6558	6449	6741	7300	7144	6616
70	6431	5228	2639	4230	6951	4348	2863	4276	6702	4660	3013	4145	5946	5004	3927	4948	6431
75	715	1310	1483	1151	219	660	918	652	240	873	1446	1056	524	1192	2373	2210	715
80	104	251	280	176	99	124	182	147	91	172	234	174	110	181	332	342	104
85	46	65	69	39	31	32	38	42	39	54	65	53	45	59	92	96	46
90	5	5	5	5	5	5	6	6	4	4	4	4	4	4	5	6	5
95	9	9	9	9	9	10	10	11	8	8	8	7	7	7	7	6	9
100	15	15	15	15	15	16	16	17	13	13	12	12	12	11	11	11	15
105	21	21	21	21	21	21	22	22	17	17	17	17	17	16	16	16	21
110	25	25	26	26	26	26	26	27	21	21	22	21	21	21	21	20	25
115	29	29	29	29	31	30	30	30	25	25	25	25	26	25	25	24	29
120	32	32	32	32	34	33	32	32	29	28	28	28	29	28	28	27	32
125	34	34	34	34	36	34	34	34	31	30	31	31	32	30	30	30	34
130	35	35	35	35	38	36	35	35	33	33	33	33	34	33	33	32	35
135	36	36	36	36	38	37	36	35	34	34	34	35	36	34	34	34	36
140	36	36	36	37	39	37	36	35	34	34	35	35	37	36	35	35	36
145	36	36	36	37	38	37	36	35	34	34	35	35	36	36	35	35	36
150	36	36	36	37	38	37	35	35	34	34	34	35	36	35	35	35	36
155	36	36	36	36	37	36	35	35	34	34	34	35	36	35	35	35	36
160	36	36	36	36	37	36	36	35	35	34	35	35	36	36	36	36	36
165	36	37	36	36	37	37	36	36	35	35	35	36	36	36	36	36	36
170	37	37	36	36	37	36	36	36	36	35	36	36	37	36	36	37	37
175	37	36	36	36	37	36	36	36	36	36	36	36	37	36	36	36	37
180	37	37	37	37	37	37	37	37	37	37	37	37	37	37	37	37	37



Plug & Play Mount Design

LED: LUMILEDS SMD 3030. 135LPW for fixture.

Driver: 100-277VAC, 200-480VAC/50-60Hz

Light Distribution: TypeII/ III/TypeIV/V/ 90x120°

Surge Protection: 4KV standard, 20KV for option

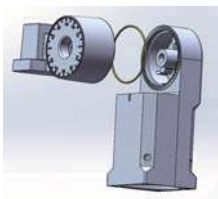
3G Vibration Test: Passed

Salt-Spray Test: 30,000hrs

IK10 Rated.

IP65 Rated.

Slip Fitter



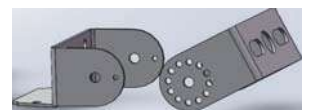
Straight Mount For Round Pole



Straight Mount for Square Pole



Trunnion



Installation Remarks

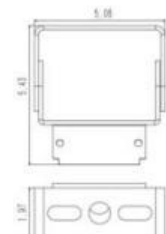
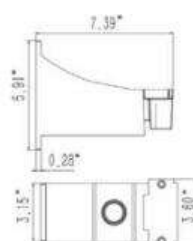
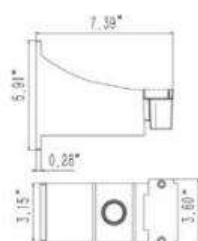
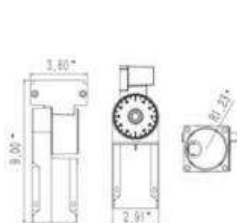
1. Installation angle: 0-90°
2. Max Pole size: 2-3/8"
3. Each rotation is 4°
4. Max Load Weight: 110lbs

1. Installation: wall mount or for Round Pole.
2. Pole size: 4",5",6"
3. Max Load Weight:110lbs

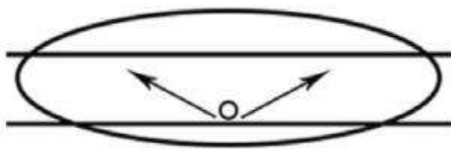
1. Installation: wall mount or for Round Pole.
2. Min Pole size: 3"x3"
3. Max Load Weight:110lbs

1. Installation angle: 0-180°
2. Max Pole size: 2-3/8"
3. Each rotation is 30°
4. Max Load Weight:110lbs

Dimensions

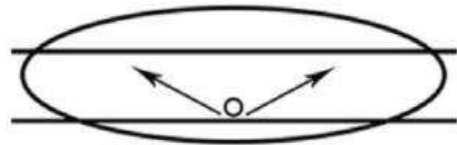


Type II



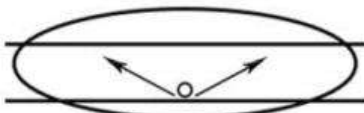
The Type II distribution is used for wide walkways, on ramps and entrance roadways, as well as other long, narrow lighting. This type is meant for lighting larger areas and usually is located near the roadside. You'll find this type of lighting mostly on smaller side streets or jogging paths. Type II light distributions have a preferred lateral width of 25 degrees. They are generally applicable to luminaires located at or near the side of relatively narrow roadways, where the width of the roadway does not exceed 1.75 times the designed mounting height.

Type III



The Type III distribution is meant for roadway lighting, general parking areas and other areas where a larger area of lighting is required. Type III lighting needs to be placed to the side of the area, allowing the light to project outward and fill the area. This produces a filling light flow. Type III light distributions have a preferred lateral width of 40 degrees. This distribution is intended for luminaires mounted at or near the side of medium width roadways or areas, where the width of the roadway or area does not exceed 2.75 times the mounting height.

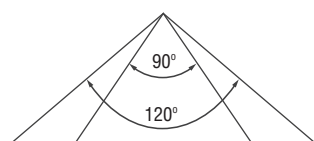
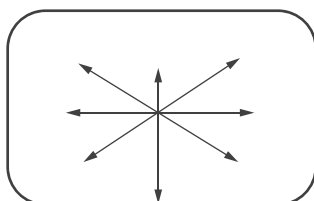
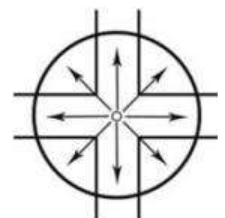
Type IV



Type IV The Type IV distribution produces a semicircular light meant for mounting on the sides of buildings and walls. It's best for illuminating the perimeter of parking areas and businesses. The intensity of the Type IV lighting has the same intensity at angles from 90 degrees to 270 degrees. Type IV light distributions have a preferred lateral width of 60 degrees. This distribution is intended for side-of-road mounting and is generally used on wide roadways where the roadway width does not exceed 3.7 times the mounting height.

Type V

Type V produces a circular distribution that has the same intensity at all angles. This distribution has a circular symmetry of candlepower that is essentially the same at all lateral angles. It is intended for luminaire mounting at or near center of roadways, center islands of parkway, and intersections. It is also meant for large, commercial parking lot lighting as well as areas where sufficient, evenly distributed light is necessary



90x120°

90x120° distribution is meant for flood light luminaires and is ideal for large open areas, building outside areas, stadiums, parks, billboards, etc.



Parking Lots



Campuses



Auto Dealerships

Packing Dimensions

Model	Case Qty (PCS)	Slip Fitter		Straight Mount		Trunnion		Size(cm)	20GP (PCS)	40GP (PCS)	40HQ (PCS)
		N.W(KG)	G.W(KG)	N.W(KG)	G.W(KG)	N.W(KG)	G.W(KG)				
80W/120W 150W	1	6.4	7.3	6.1	7.0	5.9	6.8	49.5*38.5*12.5cm	1000	2150	2500
220/300W	1	10.1	11.1	6.7	7.5	6.5	7.3	69*38.5*12.5cm	960	2070	2400

U Bracket	Case Qty (PCS)	N.W(KG)	G.W(KG)	Size(cm)
80W/120W 150W	1	5.8	6.6	38.5*38.5*12.5cm
220/300W	1	10.0	10.8	59*38.5*12.5cm