

Features & Specifications

PLT
&
AREA LIGHTS

INTENDED USE – LED area lights are all-purpose site lighting fixtures that can be used for parking lots, car dealerships, outdoor stadiums, pathways, and parks. These LED fixtures will yield a significant reduction in energy consumption compared to standard HID systems and virtually eliminate ongoing maintenance expenses with a long-lasting lifespan. Designed for outdoor applications, the LED area light fixtures will provide reduced offsite visibility as well as effective security lighting.

CONSTRUCTION – Heavy-duty die cast aluminum housing with bronze polyester powder paint for corrosion-free durability. Resistant to rough vibrations and external impacts. Acrylic lens protects the LEDs and provides even light distribution. Housing is sealed with a silicone gasket, protecting against moisture and environmental contaminants (IP65 rated). Modular LED bricks wired in parallel for ease of maintenance.

OPTICS – High-performance LEDs maintain a 28,600 Lumen output at 4000K for 70,000 hours of use. ≥ 70 CRI.

Type III light distribution is intended for perimeter lighting of parking lots and along the edges of an open area as well as large roadways and parking lot aisles. It casts more light forward so that it can be used to light roads and pathways from the side of the road rather than being installed in the median.

LED area lights are designed to have a more directional beam angle than metal halide and high pressure sodium fixtures so no light is lost within or above the fixture. These LED fixtures also do not lose Lumens in the same way as a HID fixture, meaning the brightness stays consistent longer and needs to be replaced far less frequently.

ELECTRICAL – Input voltage of 120-277 VAC, 50/60Hz. Includes 4kV surge protection standard. 10kV and 20kV optional. Includes a shorting cap and photocell receptacle. Features a Meanwell LED Driver.

INSTALLATION – Versatile mount design can be used with different styles of mounts, including slipfitter, straight arm, trunnion, and u brackets. Mounts sold separately.

LISTINGS – UL Certified to safety standards for wet location. Rated for -40°C to 45°C ambient temperature. IP-65 Rated. IK10 rated - protected against 20 joules of impact. DesignLights Consortium® (DLC) qualified product. DLC Part Number®: PLTB9A3X11X2.

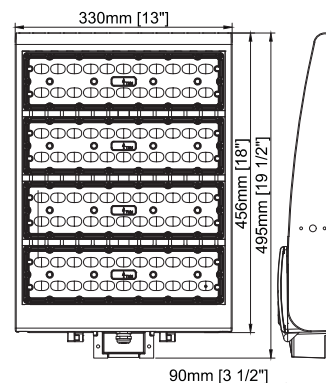
WARRANTY – 5-year warranty. PLT products that are damaged or defective will be repaired or replaced at PLT's choosing for a period of 5 years. Contact 1-800-624-4488 for more information.

ADD-ONS – Pair with timers, photocells, and motion sensors for hassle free bright night time lighting and energy savings during the day. If pairing with a photocell, it must be LED compatible in order to operate properly. If using a conventional photocell, be sure to replace it with one rated for use with LEDs. While conventional light sensors will still work with LED fixtures at first, they will burn out prematurely. The same is true for motion sensors.

If you live in the northern hemisphere, your photocells should face north whenever possible. North-facing light sensors allow for the most balanced on/off schedule based on the arc of the sun. If pointed west, it will turn on and off late and vice versa for east-facing light sensors. Photocells facing the south will be exposed to the most direct sunlight which can burn out the components and cause premature failure. If you want your lights to come on early or late, we recommend pointing the light sensor northeast or northwest, respectfully. The opposite is true south of the equator.



Mounts Sold Separately



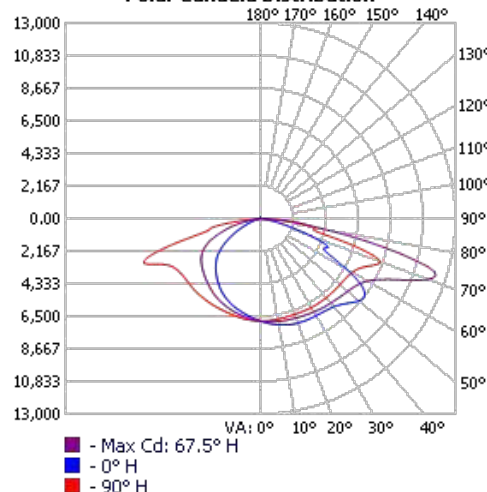
Dimensions

Height: 19.5 in.

Width: 13 in.

Depth: 3.5 in.

Polar Candela Distribution



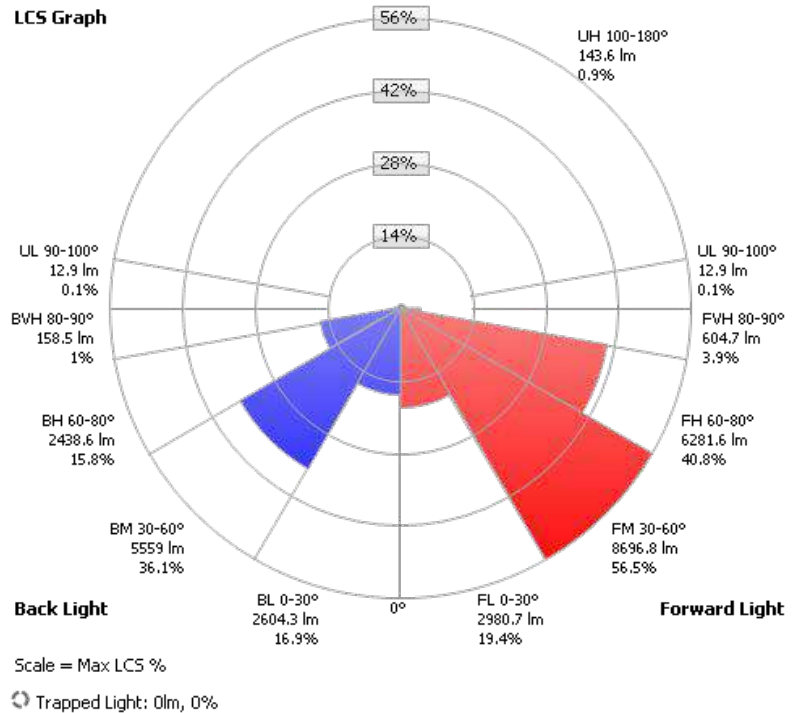
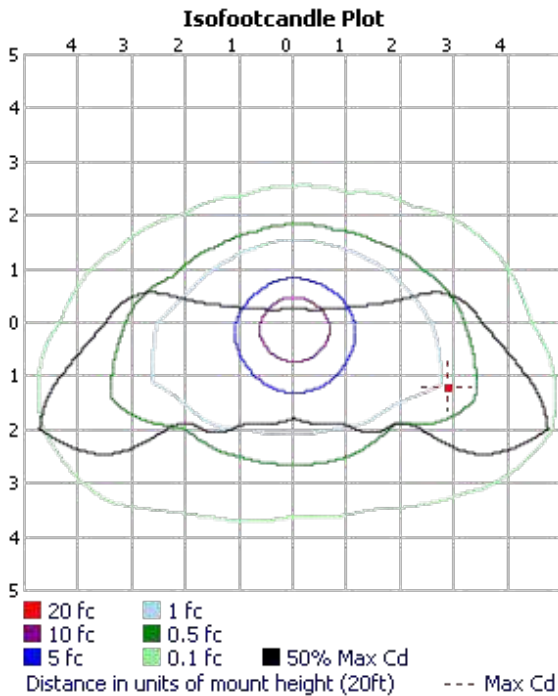
SKU #	Kelvin	Lumens	CRI	Wattage	Voltage	DLC?	Mounting	Life Hours	Warranty
PLT-11550	4000	28,600	70	220	120-277	Yes	Pole or Wall	70,000	5 Years

ZONAL LUMEN SUMMARY			
ZONE	LUMENS	% LAMP	% LUMINAIRE
0-30	5,585.0	36.3%	18.9%
0-40	9,571.1	62.2%	32.5%
0-60	19,838.4	128.9%	67.3%
60-90	9,484.3	61.6%	32.2%
70-100	4,315.6	28%	14.6%
90-120	55.7	0.4%	0.2%
0-90	29,322.7	190.5%	99.5%
90-180	156.5	1%	0.5%
0-180	29,479.2	191.5%	100%

LUMENS PER ZONE					
ZONE	LUMENS	% TOTAL	ZONE	LUMENS	% TOTAL
0-10	648.1	2.2%	90-100	12.9	0%
10-20	1,902.4	6.5%	100-110	18.8	0.1%
20-30	3,034.6	10.3%	110-120	24.0	0.1%
30-40	3,986.2	13.5%	120-130	25.7	0.1%
40-50	4,801.3	16.3%	130-140	24.3	0.1%
50-60	5,466.0	18.5%	140-150	20.8	0.1%
60-70	5,181.6	17.6%	150-160	16.0	0.1%
70-80	3,539.4	12.0%	160-170	10.4	0%
80-90	763.3	2.6%	170-180	3.6	0%

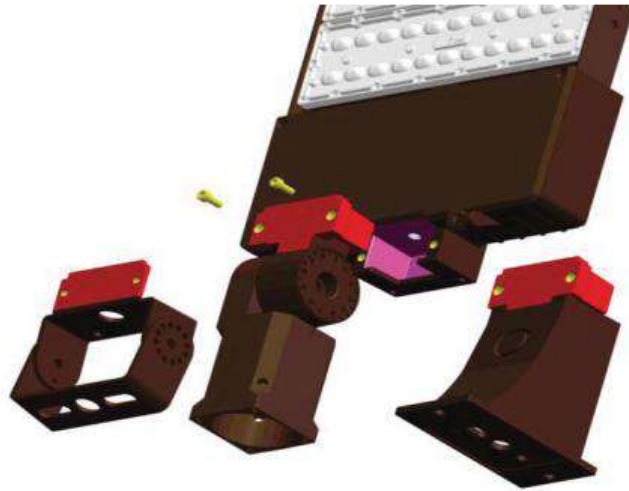
ROADWAY SUMMARY			
CUTOFF CLASSIFICATION:	NONCUTOFF		
DISTRIBUTION:	TYPE III, MEDIUM		
MAX CD, 90 DEG VERT:	42.2		
MAX CD, 80 TO <90 DEG:	5,012.5		
	LUMENS	% LAMP	
DOWNWARD STREET SIDE:	18,563.7	120.6%	
DOWNWARD HOUSE SIDE:	10,760.5	69.9%	
DOWNWARD TOTAL:	29,324.1	190.5%	
UPWARD STREET SIDE:	66.5	0.4%	
UPWARD HOUSE SIDE:	89.9	0.6%	
UPWARD TOTAL:	156.5	1%	
TOTAL LUMENS:	29,480.6	191.5%	

LCS TABLE		
BUG RATING	B4 - U3 - G4	
FORWARD LIGHT	LUMENS	LUMENS %
LOW(0-30):	2,980.7	19.4%
MEDIUM(30-60):	8,696.8	56.5%
HIGH(60-80):	6,281.6	40.8%
VERY HIGH(80-90):	604.7	3.9%
BACK LIGHT		
LOW(0-30):	2,604.3	16.9%
MEDIUM(30-60):	5,559.0	36.1%
HIGH(60-80):	2,438.6	15.8%
VERY HIGH(80-90):	158.5	1%
UPLIGHT		
LOW(90-100):	12.9	0.1%
HIGH(100-180):	143.6	0.9%
TRAPPED LIGHT:	0.000	0%



PLT

CANDELA TABLE - TYPE C																	
	0	22.5	45	67.5	90	112.5	135	157.5	180	202.5	225	247.5	270	292.5	315	337.5	360
0	6809	6809	6809	6809	6809	6809	6809	6809	6809	6809	6809	6809	6809	6809	6809	6809	6809
5	7004	6990	6949	6884	6806	6727	6668	6621	6601	6610	6648	6708	6786	6865	6930	6981	7004
10	7169	7144	7056	6933	6781	6631	6515	6427	6392	6410	6479	6592	6740	6893	7021	7126	7169
15	7298	7255	7126	6974	6760	6533	6351	6225	6184	6205	6301	6458	6675	6888	7069	7232	7298
20	7378	7314	7166	7019	6763	6442	6162	5999	5951	5983	6096	6313	6616	6871	7073	7281	7378
25	7418	7335	7198	7080	6786	6360	5953	5729	5686	5721	5845	6150	6581	6865	7058	7284	7418
30	7437	7338	7236	7150	6812	6270	5707	5403	5366	5407	5528	5968	6551	6876	7051	7263	7437
35	7492	7362	7294	7235	6827	6165	5424	5046	5004	5046	5176	5750	6524	6900	7080	7255	7492
40	7638	7462	7382	7319	6842	6050	5125	4674	4617	4657	4814	5519	6495	6935	7158	7312	7638
45	7997	7772	7539	7422	6856	5940	4819	4278	4198	4252	4457	5299	6452	6975	7281	7549	7997
50	8523	8376	7862	7551	6875	5817	4492	3804	3696	3769	4101	5074	6410	7027	7487	8094	8523
55	8461	8892	8545	7775	6931	5665	4084	3168	2973	3054	3632	4821	6436	7116	7935	8814	8461
60	6432	7652	9523	8275	7102	5421	3501	2383	2143	2176	2957	4482	6594	7343	8945	8307	6432
65	4677	4847	8180	9575	7614	5037	2729	1575	1321	1335	2178	3874	7197	8136	9471	5194	4677
70	4054	4534	4279	11826	8493	4221	1853	837	713	721	1334	2936	8282	10594	5614	4662	4054
75	1857	2375	4072	10621	5357	2807	817	425	388	397	575	1964	4855	10868	3993	2914	1857
80	713	981	2938	5013	3626	1321	325	214	171	198	274	730	3189	4211	4454	1226	713
85	235	309	742	2072	1254	216	89	50	40	47	63	164	767	1713	1170	383	235
90	22	26	37	42	18	18	12	6	5	5	10	18	15	14	36	28	22
95	3	3	5	10	14	18	16	10	8	9	14	19	20	12	6	4	3
100	4	5	7	14	18	22	20	14	12	13	19	23	26	16	8	5	4
105	6	7	10	17	21	25	25	20	17	18	24	26	29	20	11	7	6
110	11	10	12	20	24	28	29	24	22	23	29	29	32	22	14	10	11
115	15	14	15	22	27	31	31	27	27	27	32	32	33	25	17	13	15
120	20	17	18	23	29	34	32	30	31	30	34	34	34	27	20	16	20
125	23	19	20	25	30	35	33	32	35	33	35	36	35	28	22	19	23
130	26	22	22	26	31	36	34	34	36	35	36	37	35	29	24	21	26
135	29	25	24	27	30	35	36	35	38	36	36	36	34	30	26	24	29
140	32	28	26	29	31	34	36	37	40	38	37	35	34	31	27	26	32
145	32	30	28	30	31	33	36	38	40	38	37	35	34	31	29	28	32
150	34	32	30	31	32	34	35	37	39	38	36	35	34	32	30	31	34
155	35	34	32	33	33	34	35	37	38	38	37	36	35	34	32	32	35
160	35	35	34	34	34	35	36	37	39	38	37	36	36	35	34	34	35
165	37	37	36	36	35	36	37	38	39	38	38	37	37	36	36	36	37
170	38	38	37	37	37	37	38	38	39	38	38	38	38	37	37	37	38
175	38	38	38	38	38	38	38	39	39	39	39	39	38	38	37	37	38
180	39	39	39	39	39	39	39	39	39	39	39	39	39	39	39	39	39



Plug & Play Mount Design

LED: LUMILEDS SMD 3030. 135LPW for fixture.

Driver: 100-277VAC, 200-480VAC/50-60Hz

Light Distribution: TypeII/ III/TypeIV/V/ 90x120°

Surge Protection: 4KV standard, 20KV for option

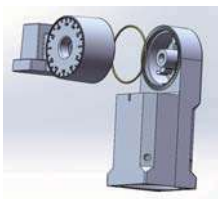
3G Vibration Test: Passed

Salt-Spray Test: 30,000hrs

IK10 Rated.

IP65 Rated.

Slip Fitter



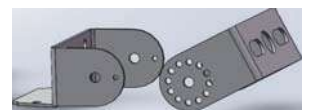
Straight Mount For Round Pole



Straight Mount for Square Pole



Trunnion



Installation Remarks

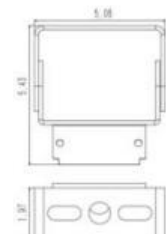
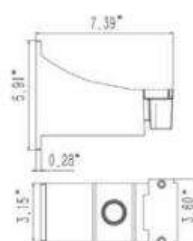
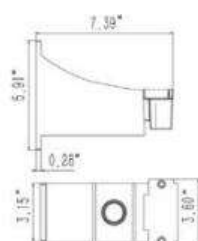
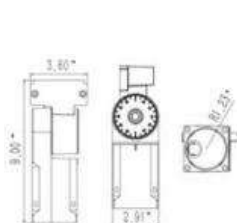
1. Installation angle: 0-90°
2. Max Pole size: 2-3/8"
3. Each rotation is 4°
4. Max Load Weight: 110lbs

1. Installation: wall mount or for Round Pole.
2. Pole size: 4",5",6"
3. Max Load Weight:110lbs

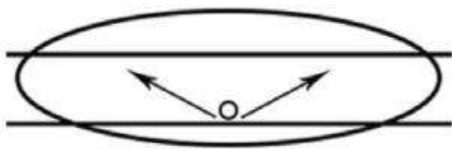
1. Installation: wall mount or for Round Pole.
2. Min Pole size: 3"x3"
3. Max Load Weight:110lbs

1. Installation angle: 0-180°
2. Max Pole size: 2-3/8"
3. Each rotation is 30°
4. Max Load Weight:110lbs

Dimensions

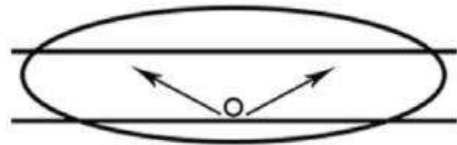


Type II



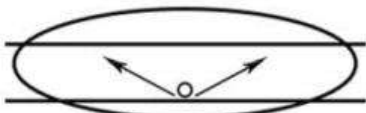
The Type II distribution is used for wide walkways, on ramps and entrance roadways, as well as other long, narrow lighting. This type is meant for lighting larger areas and usually is located near the roadside. You'll find this type of lighting mostly on smaller side streets or jogging paths. Type II light distributions have a preferred lateral width of 25 degrees. They are generally applicable to luminaires located at or near the side of relatively narrow roadways, where the width of the roadway does not exceed 1.75 times the designed mounting height.

Type III



The Type III distribution is meant for roadway lighting, general parking areas and other areas where a larger area of lighting is required. Type III lighting needs to be placed to the side of the area, allowing the light to project outward and fill the area. This produces a filling light flow. Type III light distributions have a preferred lateral width of 40 degrees. This distribution is intended for luminaires mounted at or near the side of medium width roadways or areas, where the width of the roadway or area does not exceed 2.75 times the mounting height.

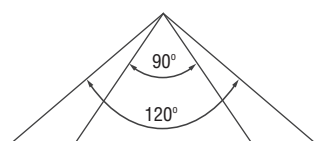
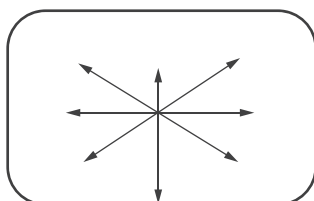
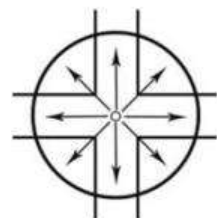
Type IV



Type IV The Type IV distribution produces a semicircular light meant for mounting on the sides of buildings and walls. It's best for illuminating the perimeter of parking areas and businesses. The intensity of the Type IV lighting has the same intensity at angles from 90 degrees to 270 degrees. Type IV light distributions have a preferred lateral width of 60 degrees. This distribution is intended for side-of-road mounting and is generally used on wide roadways where the roadway width does not exceed 3.7 times the mounting height.

Type V

Type V produces a circular distribution that has the same intensity at all angles. This distribution has a circular symmetry of candlepower that is essentially the same at all lateral angles. It is intended for luminaire mounting at or near center of roadways, center islands of parkway, and intersections. It is also meant for large, commercial parking lot lighting as well as areas where sufficient, evenly distributed light is necessary



90x120°

90x120° distribution is meant for flood light luminaires and is ideal for large open areas, building outside areas, stadiums, parks, billboards, etc.



Parking Lots



Campuses



Auto Dealerships

Packing Dimensions

Model	Case Qty (PCS)	Slip Fitter		Straight Mount		Trunnion		Size(cm)	20GP (PCS)	40GP (PCS)	40HQ (PCS)
		N.W(KG)	G.W(KG)	N.W(KG)	G.W(KG)	N.W(KG)	G.W(KG)				
80W/120W 150W	1	6.4	7.3	6.1	7.0	5.9	6.8	49.5*38.5*12.5cm	1000	2150	2500
220/300W	1	10.1	11.1	6.7	7.5	6.5	7.3	69*38.5*12.5cm	960	2070	2400

U Bracket	Case Qty (PCS)	N.W(KG)	G.W(KG)	Size(cm)
80W/120W 150W	1	5.8	6.6	38.5*38.5*12.5cm
220/300W	1	10.0	10.8	59*38.5*12.5cm