

Features & Specifications

PLT
AREA LIGHTS

INTENDED USE – LED area lights are all-purpose site lighting fixtures that can be used for parking lots, car dealerships, outdoor stadiums, pathways, and parks. These LED fixtures will yield a significant reduction in energy consumption compared to standard HID systems and virtually eliminate ongoing maintenance expenses with a long-lasting lifespan. Designed for outdoor applications, the LED area light fixtures will provide reduced offsite visibility as well as effective security lighting.

CONSTRUCTION – Heavy-duty die cast aluminum housing with bronze polyester powder paint for corrosion-free durability. Resistant to rough vibrations and external impacts. Acrylic lens protects the LEDs and provides even light distribution. Housing is sealed with a silicone gasket, protecting against moisture and environmental contaminants (IP65 rated). Modular LED bricks wired in parallel for ease of maintenance.

OPTICS – High-performance LEDs maintain a 19,500 Lumen output at 5000K for 70,000 hours of use. ≥ 70 CRI.

Type III light distribution is intended for perimeter lighting of parking lots and along the edges of an open area as well as large roadways and parking lot aisles. It casts more light forward so that it can be used to light roads and pathways from the side of the road rather than being installed in the median.

LED area lights are designed to have a more directional beam angle than metal halide and high pressure sodium fixtures so no light is lost within or above the fixture. These LED fixtures also do not lose Lumens in the same way as a HID fixture, meaning the brightness stays consistent longer and needs to be replaced far less frequently.

ELECTRICAL – Input voltage of 120-277 VAC, 50/60Hz. Includes 4kV surge protection standard. 10kV and 20kV optional. Includes a shorting cap and photocell receptacle. Features a Sosen LED Driver.

INSTALLATION – Versatile mount design can be used with different styles of mounts, including slipfitter, straight arm, trunnion, and u brackets. Mounts sold separately.

LISTINGS – UL Certified to safety standards for wet location. Rated for -40°C to 45°C ambient temperature. IP-65 Rated. IK10 rated - protected against 20 joules of impact. DesignLights Consortium® (DLC) qualified product. DLC Part Number ®: PLTB955X11X1.

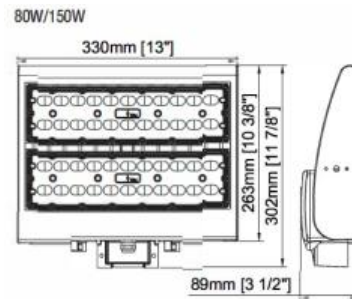
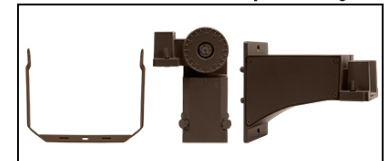
WARRANTY – 5-year warranty. PLT products that are damaged or defective will be repaired or replaced at PLT's choosing for a period of years. Contact 1-800-624-4488 for more information.

ADD-ONS – Pair with timers, photocells, and motion sensors for hassle free bright night time lighting and energy savings during the day. If pairing with a photocell, it must be LED compatible in order to operate properly. If using a conventional photocell, be sure to replace it with one rated for use with LEDs. While conventional light sensors will still work with LED fixtures at first, they will burn out prematurely. The same is true for motion sensors.

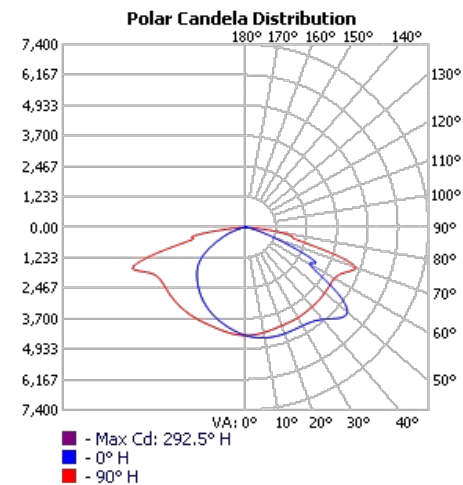
If you live in the northern hemisphere, your photocells should face north whenever possible. North-facing light sensors allow for the most balanced on/off schedule based on the arc of the sun. If pointed west, it will turn on and off late and vice versa for east-facing light sensors. Photocells facing the south will be exposed to the most direct sunlight which can burn out the components and cause premature failure. If you want your lights to come on early or late, we recommend pointing the light sensor northeast or northwest, respectfully. The opposite is true south of the equator.



Mounts Sold Separately



Dimensions
Height: 13 in.
Width: 11.9 in.
Depth: 3.5 in.



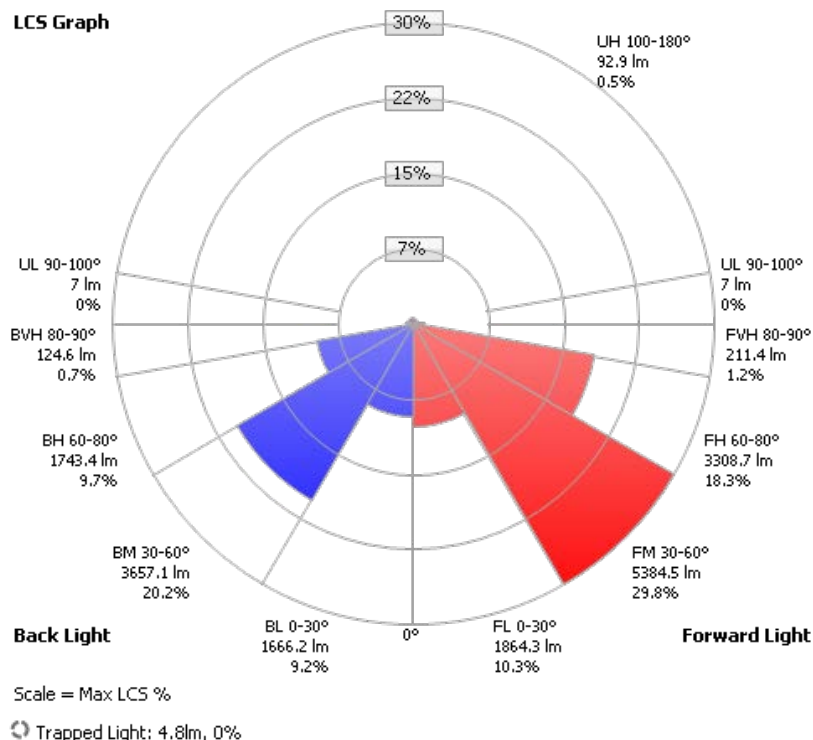
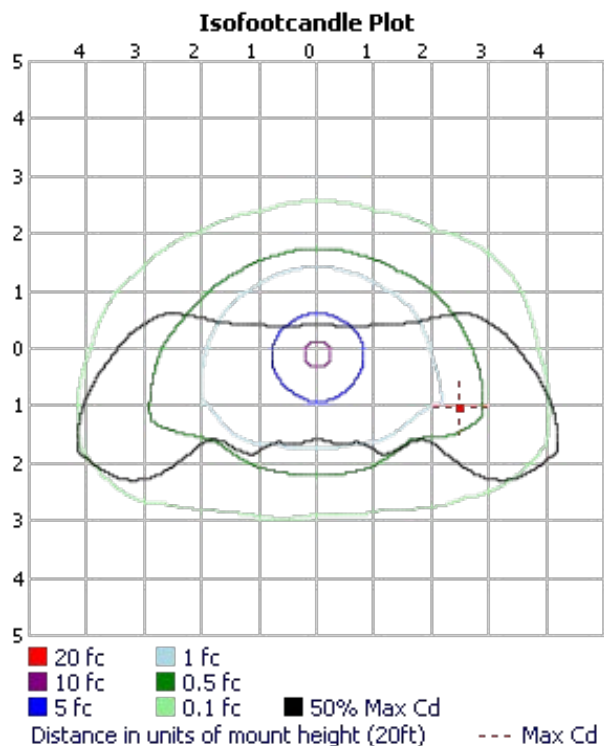
SKU #	Kelvin	Lumens	CRI	Wattage	Voltage	DLC?	Mounting	Life Hours	Warranty
PLT-11548	5000	19,500	70	150	120-277	Yes	Pole or Wall	70,000	5 Years

ZONAL LUMEN SUMMARY			
ZONE	LUMENS	% LAMP	% LUMINAIRE
0-30	3,530.5	19.5%	19.5%
0-40	6,050.7	33.5%	33.5%
0-60	12,570.6	69.6%	69.6%
60-90	5,388.6	29.8%	29.8%
70-100	2,270.9	12.6%	12.6%
90-120	34.4	0.2%	0.2%
0-90	17,959.2	99.4%	99.4%
90-180	99.9	0.6%	0.6%
0-180	18,059.1	100%	100%

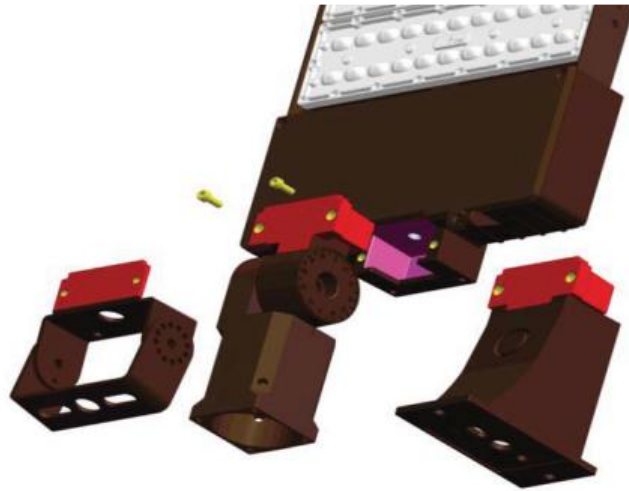
LUMENS PER ZONE					
ZONE	LUMENS	% TOTAL	ZONE	LUMENS	% TOTAL
0-10	414.9	2.3%	90-100	7.0	0%
10-20	1,205.0	6.7%	100-110	11.8	0.1%
20-30	1,910.7	10.6%	110-120	15.6	0.1%
30-40	2,520.2	14.0%	120-130	16.7	0.1%
40-50	3,077.8	17.0%	130-140	15.8	0.1%
50-60	3,442.2	19.1%	140-150	13.5	0.1%
60-70	3,124.7	17.3%	150-160	10.5	0.1%
70-80	1,927.8	10.7%	160-170	6.7	0%
80-90	336.1	1.9%	170-180	2.3	0%

ROADWAY SUMMARY			
CUTOFF CLASSIFICATION:	SEMICUTOFF		
DISTRIBUTION:	TYPE III, MEDIUM		
MAX CD, 90 DEG VERT:	16.1		
MAX CD, 80 TO <90 DEG:	2,209.0		
	LUMENS	% LAMP	
DOWNWARD STREET SIDE:	10,769.0	59.6%	
DOWNWARD HOUSE SIDE:	7,191.3	39.8%	
DOWNWARD TOTAL:	17,960.3	99.4%	
UPWARD STREET SIDE:	45.2	0.3%	
UPWARD HOUSE SIDE:	54.7	0.3%	
UPWARD TOTAL:	99.9	0.6%	
TOTAL LUMENS:	18,060.2	100%	

LCS TABLE		
BUG RATING	B3 - U3 - G3	
FORWARD LIGHT	LUMENS	LUMENS %
LOW(0-30):	1,864.3	10.3%
MEDIUM(30-60):	5,384.5	29.8%
HIGH(60-80):	3,308.7	18.3%
VERY HIGH(80-90):	211.4	1.2%
BACK LIGHT		
LOW(0-30):	1,666.2	9.2%
MEDIUM(30-60):	3,657.1	20.2%
HIGH(60-80):	1,743.4	9.7%
VERY HIGH(80-90):	124.6	0.7%
UPLIGHT		
LOW(90-100):	7.0	0%
HIGH(100-180):	92.9	0.5%
TRAPPED LIGHT:	4.8	0%



CANDELA TABLE - TYPE C																		
	0	22.5	45	67.5	90	112.5	135	157.5	180	202.5	225	247.5	270	292.5	315	337.5	360	
0	4376	4376	4376	4376	4376	4376	4376	4376	4376	4376	4376	4376	4376	4376	4376	4376	4376	
5	4475	4465	4440	4401	4361	4318	4282	4256	4247	4256	4280	4317	4358	4402	4440	4466	4475	
10	4541	4520	4466	4394	4319	4241	4171	4120	4101	4117	4166	4237	4313	4394	4467	4521	4541	
15	4572	4541	4459	4364	4271	4163	4056	3977	3951	3970	4038	4149	4261	4361	4457	4539	4572	
20	4581	4539	4439	4345	4237	4100	3938	3827	3795	3816	3905	4069	4224	4334	4431	4529	4581	
25	4579	4524	4422	4349	4227	4046	3808	3662	3627	3648	3761	4006	4205	4331	4410	4508	4579	
30	4597	4519	4423	4375	4221	3988	3650	3472	3439	3454	3586	3935	4196	4354	4412	4493	4597	
35	4669	4549	4445	4419	4205	3913	3470	3263	3234	3248	3387	3840	4181	4395	4441	4518	4669	
40	4861	4686	4506	4466	4191	3830	3274	3046	3020	3030	3183	3728	4159	4437	4499	4630	4861	
45	5214	5018	4629	4522	4178	3749	3073	2819	2793	2809	2982	3614	4128	4478	4592	4929	5214	
50	5367	5456	4953	4585	4154	3660	2867	2569	2543	2578	2789	3500	4087	4517	4807	5397	5367	
55	4385	5132	5597	4706	4132	3565	2646	2260	2206	2278	2592	3380	4053	4576	5306	5372	4385	
60	2996	3348	5849	5074	4146	3480	2356	1824	1719	1799	2286	3235	4078	4756	5958	3742	2996	
65	2842	3136	3354	6117	4372	3338	1911	1296	1187	1238	1806	2966	4336	5441	4483	3068	2842	
70	1262	1671	2410	7136	4743	2886	1336	804	769	784	1263	2396	4879	6958	2398	1966	1262	
75	489	722	2094	4865	2688	1963	727	395	361	389	716	1635	3115	5992	2415	863	489	
80	184	269	773	1741	1808	916	256	191	192	200	266	885	2209	1960	1414	333	184	
85	32	51	144	551	460	155	93	82	75	94	107	220	633	793	236	63	32	
90	2	2	3	6	6	9	9	9	11	13	15	16	9	7	3	2	2	
95	2	3	5	8	9	10	8	4	3	4	6	9	12	8	4	3	2	
100	4	4	6	10	12	13	11	6	5	6	10	12	15	10	6	4	4	
105	9	8	8	12	14	16	14	10	8	9	13	15	18	12	8	7	9	
110	12	10	10	14	16	18	17	13	11	12	16	17	20	14	10	9	12	
115	15	12	11	16	18	20	19	16	14	15	19	19	21	16	11	11	15	
120	16	13	13	17	20	21	20	18	17	18	21	21	22	17	13	12	16	
125	17	15	14	17	20	22	21	20	19	20	22	22	22	19	15	14	17	
130	18	16	16	18	21	23	22	21	21	21	22	23	22	19	16	15	18	
135	19	18	17	19	21	23	23	22	22	22	23	23	22	20	17	17	19	
140	20	19	18	20	21	23	24	23	23	23	23	23	22	20	18	18	20	
145	20	20	19	20	21	22	24	24	24	23	24	23	22	21	19	19	20	
150	21	21	20	21	22	22	24	25	24	24	24	23	22	21	20	20	21	
155	22	22	21	22	22	23	24	25	25	25	24	23	23	22	21	21	22	
160	22	22	22	22	23	23	24	25	25	25	24	23	23	23	22	22	22	
165	23	23	23	23	23	23	24	25	25	25	24	24	24	23	23	23	23	
170	24	24	24	24	24	24	24	25	25	25	25	24	24	24	24	24	24	
175	25	25	24	24	24	24	25	25	25	25	25	24	24	24	24	24	25	
180	25	25	25	25	25	25	25	25	25	25	25	25	25	25	25	25	25	



Plug & Play Mount Design

LED: LUMILEDS SMD 3030. 135LPW for fixture.

Driver: 100-277VAC, 200-480VAC/50-60Hz

Light Distribution: TypeII/ III/TypeIV/V/ 90x120°

Surge Protection: 4KV standard, 20KV for option

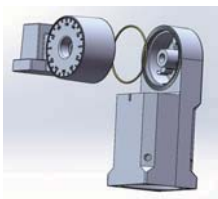
3G Vibration Test: Passed

Salt-Spray Test: 30,000hrs

IK10 Rated.

IP65 Rated.

Slip Fitter



Straight Mount For Round Pole



Straight Mount for Square Pole



Trunnion



Installation Remarks

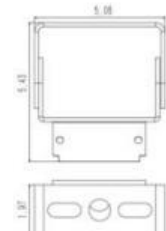
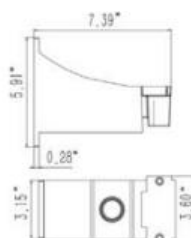
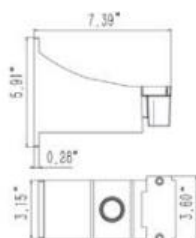
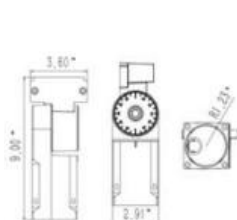
1. Installation angle: 0-90°
2. Max Pole size: 2-3/8"
3. Each rotation is 4°
4. Max Load Weight: 110lbs

1. Installation: wall mount or for Round Pole.
2. Pole size: 4",5",6"
3. Max Load Weight:110lbs

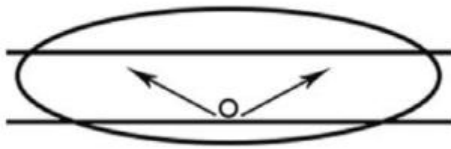
1. Installation: wall mount or for Round Pole.
2. Min Pole size: 3"x3"
3. Max Load Weight:110lbs

1. Installation angle: 0-180°
2. Max Pole size: 2-3/8"
3. Each rotation is 30°
4. Max Load Weight:110lbs

Dimensions

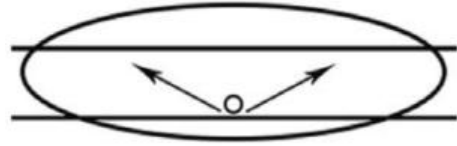


Type II



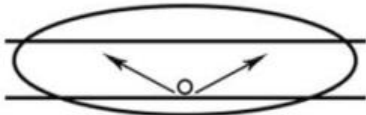
The Type II distribution is used for wide walkways, on ramps and entrance roadways, as well as other long, narrow lighting. This type is meant for lighting larger areas and usually is located near the roadside. You'll find this type of lighting mostly on smaller side streets or jogging paths. Type II light distributions have a preferred lateral width of 25 degrees. They are generally applicable to luminaires located at or near the side of relatively narrow roadways, where the width of the roadway does not exceed 1.75 times the designed mounting height.

Type III



The Type III distribution is meant for roadway lighting, general parking areas and other areas where a larger area of lighting is required. Type III lighting needs to be placed to the side of the area, allowing the light to project outward and fill the area. This produces a filling light flow. Type III light distributions have a preferred lateral width of 40 degrees. This distribution is intended for luminaires mounted at or near the side of medium width roadways or areas, where the width of the roadway or area does not exceed 2.75 times the mounting height.

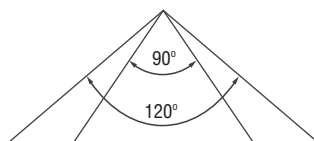
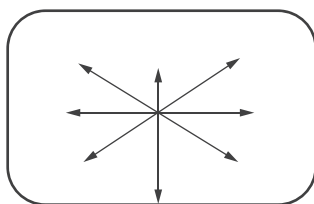
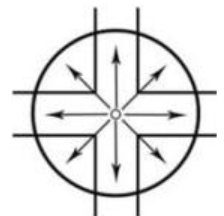
Type IV



Type IV The Type IV distribution produces a semicircular light meant for mounting on the sides of buildings and walls. It's best for illuminating the perimeter of parking areas and businesses. The intensity of the Type IV lighting has the same intensity at angles from 90 degrees to 270 degrees. Type IV light distributions have a preferred lateral width of 60 degrees. This distribution is intended for side-of-road mounting and is generally used on wide roadways where the roadway width does not exceed 3.7 times the mounting height.

Type V

Type V produces a circular distribution that has the same intensity at all angles. This distribution has a circular symmetry of candlepower that is essentially the same at all lateral angles. It is intended for luminaire mounting at or near center of roadways, center islands of parkway, and intersections. It is also meant for large, commercial parking lot lighting as well as areas where sufficient, evenly distributed light is necessary



90x120°

90x120° distribution is meant for flood light luminaires and is ideal for large open areas, building outside areas, stadiums, parks, billboards, etc.



Parking Lots



Campuses



Auto Dealerships

Packing Dimensions

Model	Case Qty (PCS)	Slip Fitter		Straight Mount		Trunnion		Size(cm)	20GP (PCS)	40GP (PCS)	40HQ (PCS)
		N.W(KG)	G.W(KG)	N.W(KG)	G.W(KG)	N.W(KG)	G.W(KG)				
80W/120W 150W	1	6.4	7.3	6.1	7.0	5.9	6.8	49.5*38.5*12.5cm	1000	2150	2500
220/300W	1	10.1	11.1	6.7	7.5	6.5	7.3	69*38.5*12.5cm	960	2070	2400

U Bracket	Case Qty (PCS)	N.W(KG)	G.W(KG)	Size(cm)
80W/120W 150W	1	5.8	6.6	38.5*38.5*12.5cm
220/300W	1	10.0	10.8	59*38.5*12.5cm