

Features & Specifications

PLT
&
AREA LIGHTS

INTENDED USE – LED area lights are all-purpose site lighting fixtures that can be used for parking lots, car dealerships, outdoor stadiums, pathways, and parks. These LED fixtures will yield a significant reduction in energy consumption compared to standard HID systems and virtually eliminate ongoing maintenance expenses with a long-lasting lifespan. Designed for outdoor applications, the LED area light fixtures will provide reduced offsite visibility as well as effective security lighting.

CONSTRUCTION – Heavy-duty die cast aluminum housing with bronze polyester powder paint for corrosion-free durability. Resistant to rough vibrations and external impacts. Acrylic lens protects the LEDs and provides even light distribution. Housing is sealed with a silicone gasket, protecting against moisture and environmental contaminants (IP65 rated). Modular LED bricks wired in parallel for ease of maintenance.

OPTICS – High-performance LEDs maintain a 10,800 Lumen output at 5000K for 70,000 hours of use. ≥ 70 CRI.

Type V light distribution is designed for large open spaces like intersections, large parking lots, and roadway medians, type V light distributions direct light in a circular or square pattern in all directions around the fixture. This light distribution type is best suited for large open spaces like roadway medians and intersections, large parking lots, and anywhere an evenly spread pattern of light is required.

LED area lights are designed to have a more directional beam angle than metal halide and high pressure sodium fixtures so no light is lost within or above the fixture. These LED fixtures also do not lose Lumens in the same way as a HID fixture, meaning the brightness stays consistent longer and needs to be replaced far less frequently.

ELECTRICAL – Input voltage of 120-277 VAC, 50/60Hz. Includes 4kV surge protection standard. 10kV and 20kV optional. Includes a shorting cap and photocell receptacle. Features a Sosen LED Driver.

INSTALLATION – Versatile mount design can be used with different styles of mounts, including slipfitter, straight arm, trunion, and u brackets. Mounts sold separately.

LISTINGS – UL Certified to safety standards for wet location. Rated for -40°C to 45°C ambient temperature. IP-65 Rated. IK10 rated - protected against 20 joules of impact. DesignLights Consortium® (DLC) qualified product. DLC Part Number @: PLTB935X21X1.

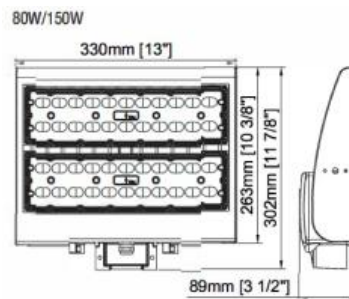
WARRANTY – 5-year warranty. PLT products that are damaged or defective will be repaired or replaced at PLT's choosing for a period of 5 years. Contact 1-800-624-4488 for more information.

ADD-ONS – Pair with timers, photocells, and motion sensors for hassle free bright night time lighting and energy savings during the day. If pairing with a photocell, it must be LED compatible in order to operate properly. If using a conventional photocell, be sure to replace it with one rated for use with LEDs. While conventional light sensors will still work with LED fixtures at first, they will burn out prematurely. The same is true for motion sensors.

If you live in the northern hemisphere, your photocells should face north whenever possible. North-facing light sensors allow for the most balanced on/off schedule based on the arc of the sun. If pointed west, it will turn on and off late and vice versa for east-facing light sensors. Photocells facing the south will be exposed to the most direct sunlight which can burn out the components and cause premature failure. If you want your lights to come on early or late, we recommend pointing the light sensor northeast or northwest, respectfully. The opposite is true south of the equator.

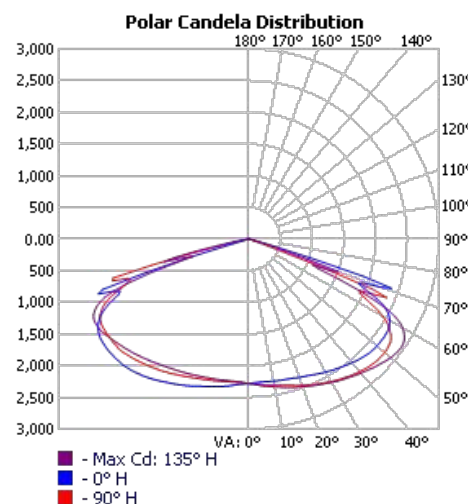


Mounts Sold Separately



Dimensions

Height: 13 in.
Width: 11.9 in.
Depth: 3.5 in.



SKU #	Kelvin	Lumens	CRI	Wattage	Voltage	DLC?	Mounting	Life Hours	Warranty
PLT-11545	5000	10,800	70	80	120-277	Yes	Pole or Wall	70,000	5 Years

ZONAL LUMEN SUMMARY

ZONE	LUMENS	% LAMP	% LUMINAIRE
0-30	2,023.4	17.9%	17.9%
0-40	3,640.8	32.2%	32.2%
0-60	8,209.0	72.7%	72.7%
60-90	3,023.9	26.8%	26.8%
70-100	774.0	6.9%	6.9%
90-120	20.9	0.2%	0.2%
0-90	11,232.9	99.4%	99.5%
90-180	61.8	0.5%	0.5%
0-180	11,294.7	100%	100%

ROADWAY SUMMARY

CUTOFF CLASSIFICATION:	CUTOFF
DISTRIBUTION:	TYPE VS
MAX CD, 90 DEG VERT:	6.9
MAX CD, 80 TO <90 DEG:	248.5
	LUMENS
DOWNWARD STREET SIDE:	5,520.6
DOWNWARD HOUSE SIDE:	5,713.1
DOWNWARD TOTAL:	11,233.7
UPWARD STREET SIDE:	31.6
UPWARD HOUSE SIDE:	30.2
UPWARD TOTAL:	61.8
TOTAL LUMENS:	11,295.5
	% LAMP
	48.9%
	50.6%
	99.4%
	0.3%
	0.3%
	0.5%
	100%

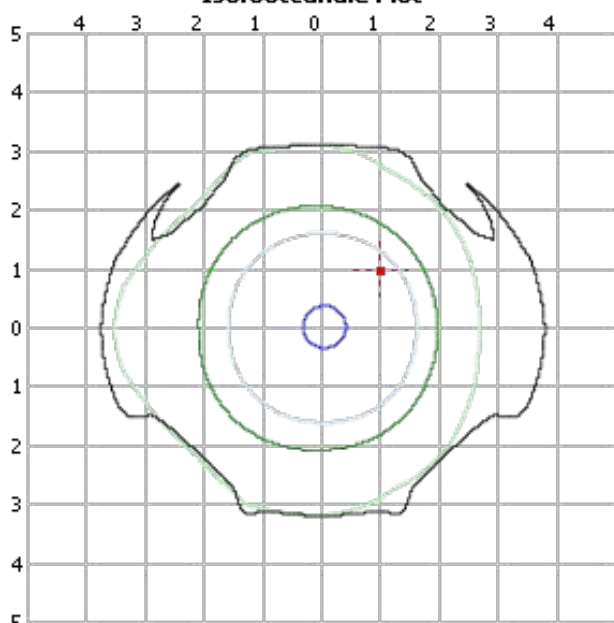
LUMENS PER ZONE

ZONE	LUMENS	% TOTAL	ZONE	LUMENS	% TOTAL
0-10	219.4	1.9%	90-100	3.6	0%
10-20	668.4	5.9%	100-110	7.3	0.1%
20-30	1,135.6	10.1%	110-120	10.0	0.1%
30-40	1,617.5	14.3%	120-130	10.9	0.1%
40-50	2,091.2	18.5%	130-140	10.2	0.1%
50-60	2,476.9	21.9%	140-150	8.4	0.1%
60-70	2,253.5	20.0%	150-160	6.2	0.1%
70-80	735.8	6.5%	160-170	3.9	0%
80-90	34.6	0.3%	170-180	1.3	0%

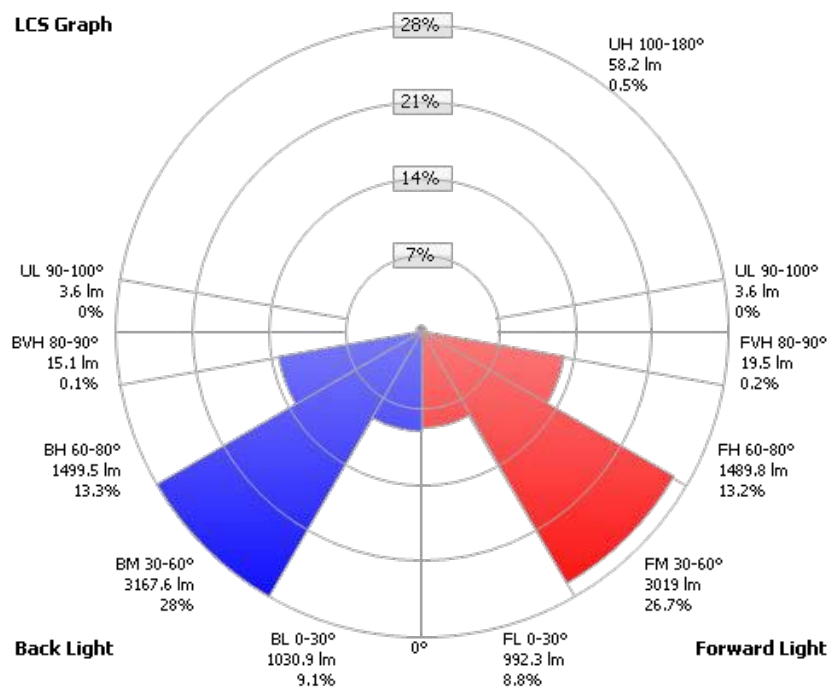
LCS TABLE

BUG RATING	B3 - U3 - G1	
FORWARD LIGHT	LUMENS	LUMENS %
LOW(0-30):	992.3	8.8%
MEDIUM(30-60):	3,019.0	26.7%
HIGH(60-80):	1,489.8	13.2%
VERY HIGH(80-90):	19.5	0.2%
BACK LIGHT		
LOW(0-30):	1,030.9	9.1%
MEDIUM(30-60):	3,167.6	28%
HIGH(60-80):	1,499.5	13.3%
VERY HIGH(80-90):	15.1	0.1%
UPLIGHT		
LOW(90-100):	3.6	0%
HIGH(100-180):	58.2	0.5%
TRAPPED LIGHT:	0.5	0%

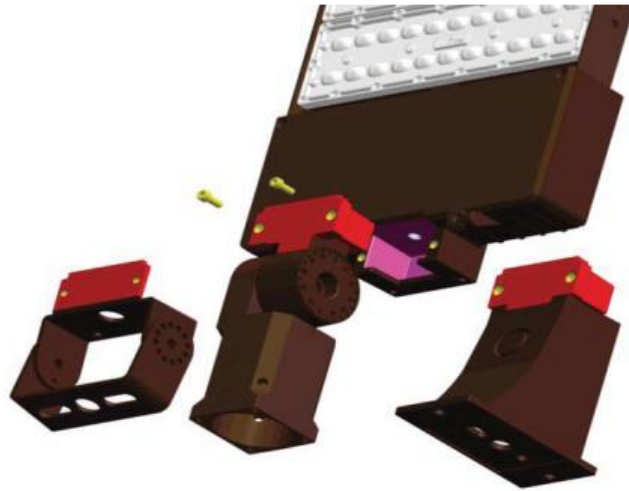
Isofootcandle Plot



LCS Graph



CANDELA TABLE - TYPE C																		
	0	22.5	45	67.5	90	112.5	135	157.5	180	202.5	225	247.5	270	292.5	315	337.5	360	
0	2280	2280	2280	2280	2280	2280	2280	2280	2280	2280	2280	2280	2280	2280	2280	2280	2280	
5	2264	2278	2293	2294	2305	2319	2323	2318	2308	2303	2295	2278	2269	2264	2259	2258	2264	
10	2277	2290	2310	2325	2343	2365	2369	2368	2361	2343	2330	2301	2282	2270	2261	2260	2277	
15	2291	2314	2342	2366	2393	2416	2425	2425	2408	2394	2375	2336	2307	2289	2279	2275	2291	
20	2323	2347	2383	2421	2457	2476	2476	2487	2471	2450	2414	2373	2341	2316	2300	2303	232	
25	2365	2388	2426	2477	2526	2539	2542	2557	2540	2510	2469	2422	2389	2356	2335	2343	2365	
30	2421	2438	2480	2542	2597	2610	2609	2625	2609	2583	2517	2477	2451	2402	2374	2392	2421	
35	2482	2498	2545	2607	2664	2679	2681	2697	2689	2651	2585	2534	2511	2456	2423	2448	2482	
40	2541	2559	2613	2672	2725	2748	2760	2764	2757	2722	2649	2599	2574	2518	2484	2506	2541	
45	2601	2628	2689	2735	2777	2812	2838	2834	2809	2780	2719	2658	2632	2576	2557	2571	2601	
50	2631	2688	2766	2784	2793	2854	2916	2879	2827	2823	2791	2719	2687	2635	2623	2625	2631	
55	2633	2716	2818	2780	2739	2847	2952	2890	2824	2850	2862	2770	2695	2693	2695	2670	2633	
60	2569	2661	2716	2557	2448	2615	2801	2788	2750	2836	2910	2794	2689	2728	2758	2674	2569	
65	2232	2197	1995	1830	1934	1804	1935	2258	2451	2617	2779	2673	2546	2623	2688	2523	2232	
70	2217	1361	1417	1073	429	1037	1505	1527	2528	1979	1902	2054	2061	2015	2039	1834	2217	
75	222	332	252	105	52	93	169	184	119	670	1371	1450	1587	1457	1384	1026	222	
80	43	88	61	29	21	26	42	51	41	105	182	150	78	177	248	152	43	
85	17	17	8	3	2	3	6	12	16	29	50	42	30	48	68	46	17	
90	2	2	2	3	3	3	2	2	2	2	4	6	6	7	6	3	2	
95	4	4	4	4	4	5	4	4	3	2	2	2	2	2	2	2	4	
100	6	6	6	7	7	7	6	6	4	4	4	3	3	3	4	4	6	
105	8	8	9	9	9	9	8	8	6	5	5	5	5	5	5	6	8	
110	10	10	10	11	11	11	10	10	8	7	7	7	7	7	7	7	10	
115	12	12	12	12	12	12	11	11	9	9	9	8	8	8	9	9	12	
120	13	13	13	13	13	12	12	12	10	10	10	10	10	10	10	10	13	
125	13	13	13	13	13	13	13	13	11	11	11	11	11	11	12	12	13	
130	14	14	13	14	14	13	13	13	12	12	12	12	12	12	12	13	14	
135	14	14	14	14	14	14	13	13	13	13	13	13	13	13	13	13	14	
140	14	14	14	14	14	14	13	13	13	13	13	13	13	13	14	14	14	
145	14	14	14	14	14	14	13	13	13	13	13	13	13	13	14	14	14	
150	14	14	14	13	14	13	13	13	13	13	13	13	13	13	14	14	14	
155	14	14	14	13	14	13	13	13	13	13	13	14	14	14	14	14	14	
160	14	14	14	13	14	13	13	13	13	13	13	14	14	14	14	14	14	
165	14	14	14	14	14	14	13	13	13	13	14	14	14	14	14	14	14	
170	14	14	14	14	14	14	13	14	14	13	14	14	14	14	14	14	14	
175	14	14	14	14	14	14	14	14	14	14	14	14	14	14	14	14	14	
180	14	14	14	14	14	14	14	14	14	14	14	14	14	14	14	14	14	



Plug & Play Mount Design

LED: LUMILEDS SMD 3030. 135LPW for fixture.

Driver: 100-277VAC, 200-480VAC/50-60Hz

Light Distribution: TypeII/ III/TypeIV/V/ 90x120°

Surge Protection: 4KV standard, 20KV for option

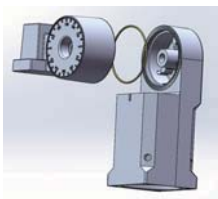
3G Vibration Test: Passed

Salt-Spray Test: 30,000hrs

IK10 Rated.

IP65 Rated.

Slip Fitter



Straight Mount For Round Pole



Straight Mount for Square Pole



Trunnion



Installation Remarks

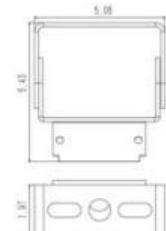
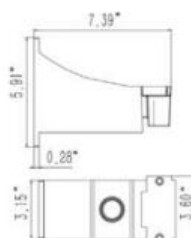
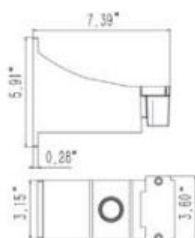
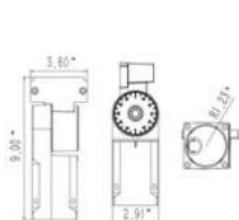
1. Installation angle: 0-90°
2. Max Pole size: 2-3/8"
3. Each rotation is 4°
4. Max Load Weight: 110lbs

1. Installation: wall mount or for Round Pole.
2. Pole size: 4",5",6"
3. Max Load Weight:110lbs

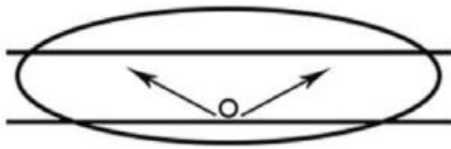
1. Installation: wall mount or for Round Pole.
2. Min Pole size: 3"x3"
3. Max Load Weight:110lbs

1. Installation angle: 0-180°
2. Max Pole size: 2-3/8"
3. Each rotation is 30°
4. Max Load Weight:110lbs

Dimensions

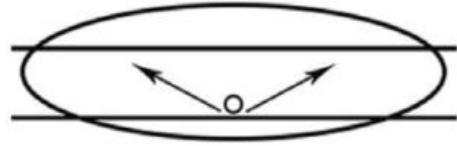


Type II



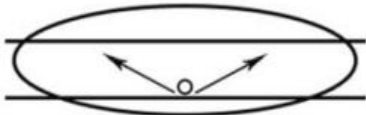
The Type II distribution is used for wide walkways, on ramps and entrance roadways, as well as other long, narrow lighting. This type is meant for lighting larger areas and usually is located near the roadside. You'll find this type of lighting mostly on smaller side streets or jogging paths. Type II light distributions have a preferred lateral width of 25 degrees. They are generally applicable to luminaires located at or near the side of relatively narrow roadways, where the width of the roadway does not exceed 1.75 times the designed mounting height.

Type III



The Type III distribution is meant for roadway lighting, general parking areas and other areas where a larger area of lighting is required. Type III lighting needs to be placed to the side of the area, allowing the light to project outward and fill the area. This produces a filling light flow. Type III light distributions have a preferred lateral width of 40 degrees. This distribution is intended for luminaires mounted at or near the side of medium width roadways or areas, where the width of the roadway or area does not exceed 2.75 times the mounting height.

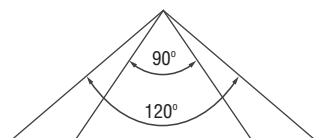
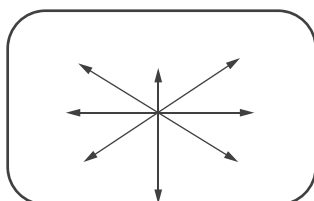
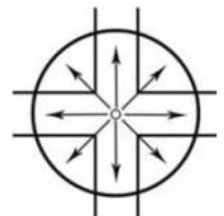
Type IV



Type IV The Type IV distribution produces a semicircular light meant for mounting on the sides of buildings and walls. It's best for illuminating the perimeter of parking areas and businesses. The intensity of the Type IV lighting has the same intensity at angles from 90 degrees to 270 degrees. Type IV light distributions have a preferred lateral width of 60 degrees. This distribution is intended for side-of-road mounting and is generally used on wide roadways where the roadway width does not exceed 3.7 times the mounting height.

Type V

Type V produces a circular distribution that has the same intensity at all angles. This distribution has a circular symmetry of candlepower that is essentially the same at all lateral angles. It is intended for luminaire mounting at or near center of roadways, center islands of parkway, and intersections. It is also meant for large, commercial parking lot lighting as well as areas where sufficient, evenly distributed light is necessary

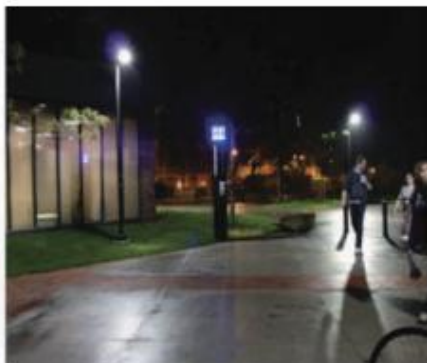


90x120°

90x120° distribution is meant for flood light luminaires and is ideal for large open areas, building outside areas, stadiums, parks, billboards, etc.



Parking Lots



Campuses



Auto Dealerships

Packing Dimensions

Model	Case Qty (PCS)	Slip Fitter		Straight Mount		Trunnion		Size(cm)	20GP (PCS)	40GP (PCS)	40HQ (PCS)
		N.W(KG)	G.W(KG)	N.W(KG)	G.W(KG)	N.W(KG)	G.W(KG)				
80W/120W 150W	1	6.4	7.3	6.1	7.0	5.9	6.8	49.5*38.5*12.5cm	1000	2150	2500
220/300W	1	10.1	11.1	6.7	7.5	6.5	7.3	69*38.5*12.5cm	960	2070	2400

U Bracket	Case Qty (PCS)	N.W(KG)	G.W(KG)	Size(cm)
80W/120W 150W	1	5.8	6.6	38.5*38.5*12.5cm
220/300W	1	10.0	10.8	59*38.5*12.5cm