

Features & Specifications

INTENDED USE – LED area lights are all-purpose site lighting fixtures that can be used for parking lots, car dealerships, outdoor stadiums, pathways, and parks. These LED fixtures will yield a significant reduction in energy consumption compared to standard HID systems and virtually eliminate ongoing maintenance expenses with a long-lasting lifespan. Designed for outdoor applications, the LED area light fixtures will provide reduced offsite visibility as well as effective security lighting.

CONSTRUCTION – Heavy-duty die cast aluminum housing with bronze polyester powder paint for corrosion-free durability. Resistant to rough vibrations and external impacts. Acrylic lens protects the LEDs and provides even light distribution. Housing is sealed with a silicone gasket, protecting against moisture and environmental contaminants (IP65 rated). Modular LED bricks wired in parallel for ease of maintenance.

OPTICS – High-performance LEDs maintain a 10,400 Lumen output at 5000K for 70,000 hours of use. ≥ 70 CRI.

Type III light distribution is intended for perimeter lighting of parking lots and along the edges of an open area as well as large roadways and parking lot aisles. It casts more light forward so that it can be used to light roads and pathways from the side of the road rather than being installed in the median.

LED area lights are designed to have a more directional beam angle than metal halide and high pressure sodium fixtures so no light is lost within or above the fixture. These LED fixtures also do not lose Lumens in the same way as a HID fixture, meaning the brightness stays consistent longer and needs to be replaced far less frequently.

ELECTRICAL – Input voltage of 120-277 VAC, 50/60Hz. Includes 4kV surge protection standard. 10kV and 20kV optional. Includes a shorting cap and photocell receptacle. Features a Sosen LED Driver.

INSTALLATION – Versatile mount design can be used with different styles of mounts, including slipfitter, straight arm, trunnion, and u brackets. Mounts sold separately.

LISTINGS – UL Certified to safety standards for wet location. Rated for -40°C to 45°C ambient temperature. IP-65 Rated. IK10 rated - protected against 20 joules of impact. DesignLights Consortium® (DLC) qualified product. DLC Part Number ®: PLTB935X11X1.

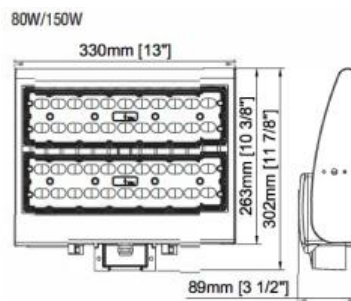
WARRANTY – 5-year warranty. PLT products that are damaged or defective will be repaired or replaced at PLT's choosing for a period of 5 years. Contact 1-800-624-4488 for more information.

ADD-ONS – Pair with timers, photocells, and motion sensors for hassle free bright night time lighting and energy savings during the day. If pairing with a photocell, it must be LED compatible in order to operate properly. If using a conventional photocell, be sure to replace it with one rated for use with LEDs. While conventional light sensors will still work with LED fixtures at first, they will burn out prematurely. The same is true for motion sensors.

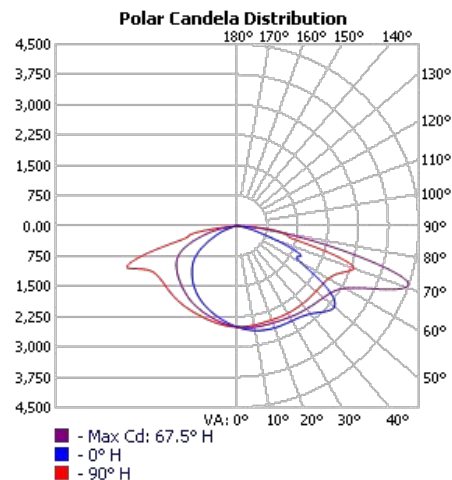
If you live in the northern hemisphere, your photocells should face north whenever possible. North-facing light sensors allow for the most balanced on/off schedule based on the arc of the sun. If pointed west, it will turn on and off late and vice versa for east-facing light sensors. Photocells facing the south will be exposed to the most direct sunlight which can burn out the components and cause premature failure. If you want your lights to come on early or late, we recommend pointing the light sensor northeast or northwest, respectfully. The opposite is true south of the equator.



Mounts Sold Separately



Dimensions
Height: 13 in.
Width: 11.9 in.
Depth: 3.5 in.



SKU #	Kelvin	Lumens	CRI	Wattage	Voltage	DLC?	Mounting	Life Hours	Warranty
PLT-11544	5000	10,400	70	80	120-277	Yes	Pole or Wall	70,000	5 Years

ZONAL LUMEN SUMMARY

ZONE	LUMENS	% LAMP	% LUMINAIRE
0-30	2,041.3	19.1%	19.1%
0-40	3,504.8	32.8%	32.8%
0-60	7,292.9	68.3%	68.3%
60-90	3,330.2	31.2%	31.2%
70-100	1,478.6	13.8%	13.8%
90-120	19.9	0.2%	0.2%
0-90	10,623.1	99.4%	99.5%
90-180	57.6	0.5%	0.5%
0-180	10,680.7	100%	100%

LUMENS PER ZONE

ZONE	LUMENS	% TOTAL	ZONE	LUMENS	% TOTAL
0-10	237.8	2.2%	90-100	4.0	0%
10-20	695.4	6.5%	100-110	6.9	0.1%
20-30	1,108.1	10.4%	110-120	9.0	0.1%
30-40	1,463.5	13.7%	120-130	9.6	0.1%
40-50	1,781.0	16.7%	130-140	9.1	0.1%
50-60	2,007.1	18.8%	140-150	7.8	0.1%
60-70	1,855.6	17.4%	150-160	6.0	0.1%
70-80	1,233.8	11.6%	160-170	3.8	0%
80-90	240.8	2.3%	170-180	1.3	0%

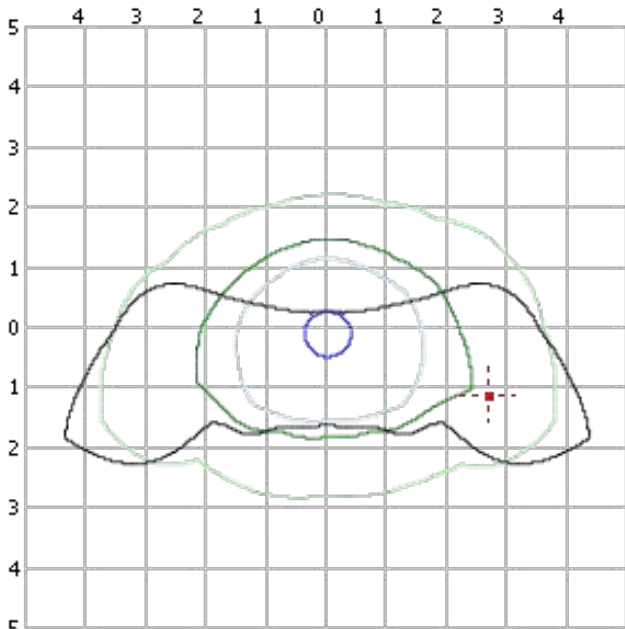
ROADWAY SUMMARY

CUTOFF CLASSIFICATION:	SEMICUTOFF	
DISTRIBUTION:	TYPE III, MEDIUM	
MAX CD, 90 DEG VERT:	5.2	
MAX CD, 80 TO <90 DEG:	1,512.6	
	LUMENS	% LAMP
DOWNWARD STREET SIDE:	6,508.4	60.9%
DOWNWARD HOUSE SIDE:	4,115.2	38.5%
DOWNWARD TOTAL:	10,623.7	99.5%
UPWARD STREET SIDE:	25.3	0.2%
UPWARD HOUSE SIDE:	32.3	0.3%
UPWARD TOTAL:	57.6	0.5%
TOTAL LUMENS:	10,681.2	100%

LCS TABLE

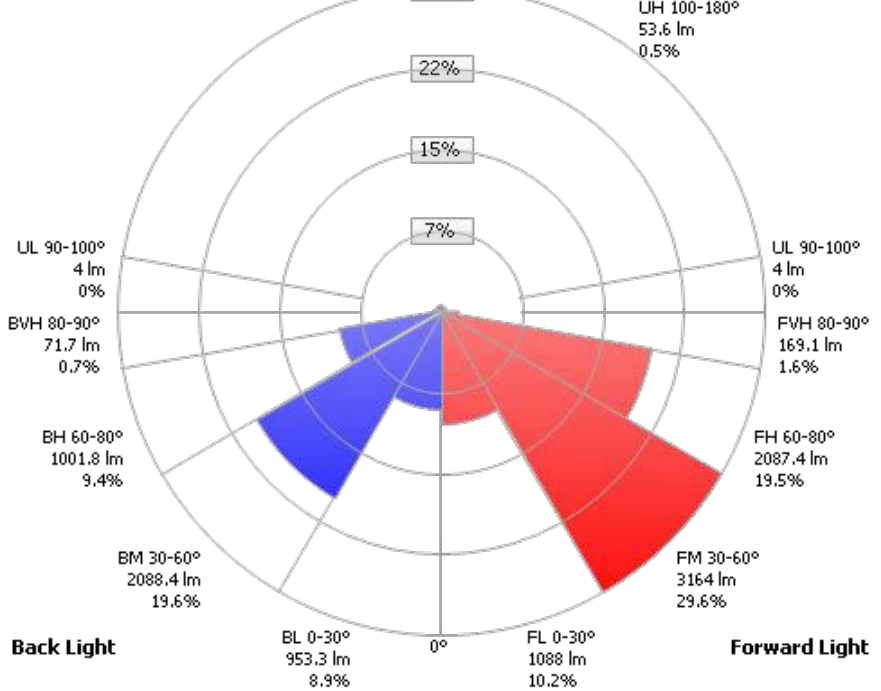
BUG RATING	B3 - U3 - G3	
FORWARD LIGHT	LUMENS	LUMENS %
LOW(0-30):	1,088.0	10.2%
MEDIUM(30-60):	3,164.0	29.6%
HIGH(60-80):	2,087.4	19.5%
VERY HIGH(80-90):	169.1	1.6%
BACK LIGHT		
LOW(0-30):	953.3	8.9%
MEDIUM(30-60):	2,088.4	19.6%
HIGH(60-80):	1,001.8	9.4%
VERY HIGH(80-90):	71.7	0.7%
UPLIGHT		
LOW(90-100):	4.0	0%
HIGH(100-180):	53.6	0.5%
TRAPPED LIGHT:	0.8	0%

Isofootcandle Plot



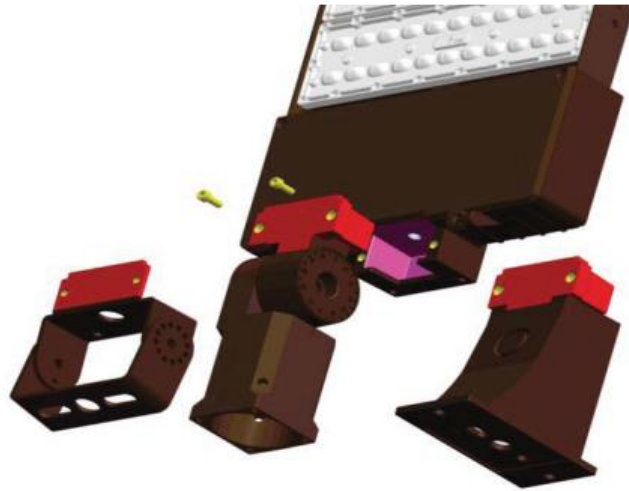
■ 20 fc ■ 1 fc
■ 10 fc ■ 0.5 fc
■ 5 fc ■ 0.1 fc 50% Max Cd
 Distance in units of mount height (20ft) --- Max Cd

LCS Graph



Back Light

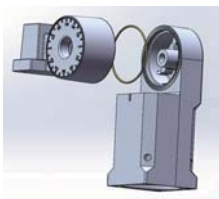
Scale = Max LCS %
 Trapped Light: 0.8lm, 0%



Plug & Play Mount Design

LED: LUMILEDS SMD 3030. 135LPW for fixture.
 Driver: 100-277VAC, 200-480VAC/50-60Hz
 Light Distribution: TypeII/ III/TypeIV/V/ 90x120°
 Surge Protection: 4KV standard, 20KV for option
 3G Vibration Test: Passed
 Salt-Spray Test: 30,000hrs
 IK10 Rated.
 IP65 Rated.

Slip Fitter	Straight Mount For Round Pole	Straight Mount for Square Pole	Trunnion
-------------	-------------------------------	--------------------------------	----------



Installation Remarks

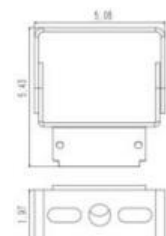
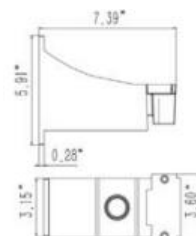
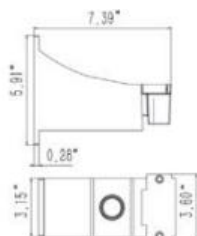
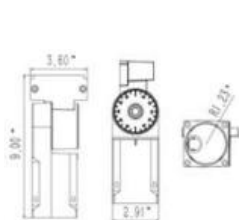
1. Installation angle: 0-90°
2. Max Pole size: 2-3/8"
3. Each rotation is 4°
4. Max Load Weight: 110lbs

1. Installation: wall mount or for Round Pole.
2. Pole size: 4",5",6"
3. Max Load Weight:110lbs

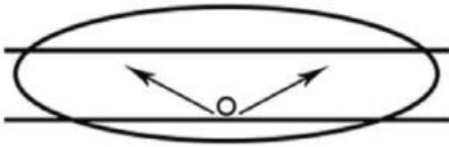
1. Installation: wall mount or for Round Pole.
2. Min Pole size: 3"x3"
3. Max Load Weight:110lbs

1. Installation angle: 0-180°
2. Max Pole size: 2-3/8"
3. Each rotation is 30°
4. Max Load Weight:110lbs

Dimensions

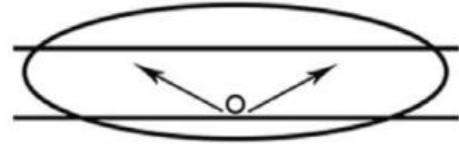


Type II



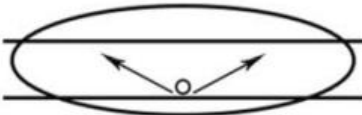
The Type II distribution is used for wide walkways, on ramps and entrance roadways, as well as other long, narrow lighting. This type is meant for lighting larger areas and usually is located near the roadside. You'll find this type of lighting mostly on smaller side streets or jogging paths. Type II light distributions have a preferred lateral width of 25 degrees. They are generally applicable to luminaires located at or near the side of relatively narrow roadways, where the width of the roadway does not exceed 1.75 times the designed mounting height.

Type III



The Type III distribution is meant for roadway lighting, general parking areas and other areas where a larger area of lighting is required. Type III lighting needs to be placed to the side of the area, allowing the light to project outward and fill the area. This produces a filling light flow. Type III light distributions have a preferred lateral width of 40 degrees. This distribution is intended for luminaires mounted at or near the side of medium width roadways or areas, where the width of the roadway or area does not exceed 2.75 times the mounting height.

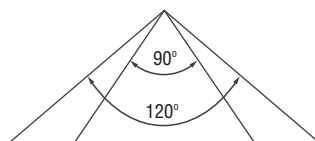
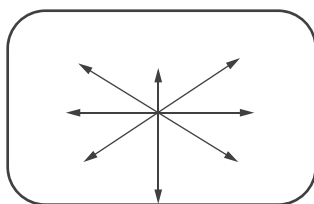
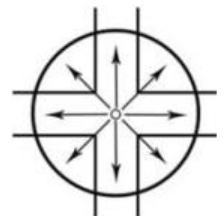
Type IV



The Type IV distribution produces a semicircular light meant for mounting on the sides of buildings and walls. It's best for illuminating the perimeter of parking areas and businesses. The intensity of the Type IV lighting has the same intensity at angles from 90 degrees to 270 degrees. Type IV light distributions have a preferred lateral width of 60 degrees. This distribution is intended for side-of-road mounting and is generally used on wide roadways where the roadway width does not exceed 3.7 times the mounting height.

Type V

Type V produces a circular distribution that has the same intensity at all angles. This distribution has a circular symmetry of candlepower that is essentially the same at all lateral angles. It is intended for luminaire mounting at or near center of roadways, center islands of parkway, and intersections. It is also meant for large, commercial parking lot lighting as well as areas where sufficient, evenly distributed light is necessary



90x120°

90x120° distribution is meant for flood light luminaires and is ideal for large open areas, building outside areas, stadiums, parks, billboards, etc.



Parking Lots



Campuses



Auto Dealerships

Packing Dimensions

Model	Case Qty (PCS)	Slip Fitter		Straight Mount		Trunnion		Size(cm)	20GP (PCS)	40GP (PCS)	40HQ (PCS)
		N.W(KG)	G.W(KG)	N.W(KG)	G.W(KG)	N.W(KG)	G.W(KG)				
80W/120W 150W	1	6.4	7.3	6.1	7.0	5.9	6.8	49.5*38.5*12.5cm	1000	2150	2500
220/300W	1	10.1	11.1	6.7	7.5	6.5	7.3	69*38.5*12.5cm	960	2070	2400

U Bracket	Case Qty (PCS)	N.W(KG)	G.W(KG)	Size(cm)
80W/120W 150W	1	5.8	6.6	38.5*38.5*12.5cm
220/300W	1	10.0	10.8	59*38.5*12.5cm