

# Features & Specifications

**PLT**  
&  
**LED PANELS**

**INTENDED USE** – PLT ceiling LED panel lights combine LED technology along with outstanding optical performance to seamlessly replace fluorescent troffers in offices or other commercial applications. A sleek, low-profile design paired with edge-to-edge lighting gives a more aesthetically pleasing and sophisticated look than troffers where tube lines and fading are visible within the fixture. Flat panel fixtures come equipped with integrated LEDs that use a fraction of the power consumption, last years longer and completely eliminate the need for tubes, sockets, and ballasts for excellent cost savings. Designed to be incredibly thin and light compared to traditional troffers, PLT LED panels are ideal for applications with shallow drop ceilings. Optional mounting kits are available to accommodate suspended, surface and recessed installation into non-drop ceilings.

**CONSTRUCTION** – Low profile extruded aluminum housing with a shatter-resistant acrylic lens, only 0.38" deep and 1.8" with mounted LED driver. Sealed housing prevents dust and debris build-up within the panel making this a cleaner fixture option for sanitary locations such as hospitals, clinics, dental offices, testing rooms, labs and more.

**OPTICS** – High-Performance Integrated LEDs maintain a 4400 to 5000 Lumen output at 3500K, 4000K, or 5000K for 50,000 hours of use. ≥80 CRI. Unique optics guide plate controls glare and provides uniform light distribution through a smooth opaque acrylic lens for an even and consistent shadow-less light.

Standard fluorescent troffers require tubes, needing replaced as they burn out or become discolored. The use of tubes within a fluorescent troffer also traps light upward into the fixture causing dark spots. In panels the LED array is built in and not replaceable, eliminating maintenance throughout the life of the fixture. The modern optics and low-glare lens eliminates dark spots, thereby reducing the number of fixtures needed to cover the area.

**ELECTRICAL** – Equipped standard with a 0-10V continuous dimming driver that works with any standard 0-10V control/dimmer, input voltage of 120-277 VAC.

LED drivers eliminate the issues commonly associated with ballast driven fixtures such as humming, flickering, and failures.

**INSTALLATION** – The lightweight, super-thin panels weigh only 6 pounds, reducing labor costs by supporting one-man installations. These LED panels are remarkably easy to install. Once the integrated LED driver has been properly wired, tabs on the back of the fixture must be bent for the panel light to hang directly from the drop ceiling.

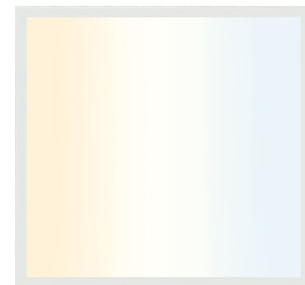
**LISTINGS** – Built to UL 1598 and 2108 standards.

**WARRANTY** – 5-year warranty. PLT products that are damaged or defective will be repaired or replaced at PLT's choosing for a period of 5 years. Contact 1-800-624-4488 for more information.

**ADD-ONS** – Pair with motion sensors, timers, and daylight harvesting systems for hassle free energy savings during the day without needing to worry about manually turning the fixture on and off. Use in conjunction with any 0-10V LED dimmer control to customize lighting level and maximize energy savings. Emergency battery backups are available to ensure up to 90 minutes of lighting in the event of an outage. For more versatile installation options, suspension, surface and recessed mounting kits are available. If using a conventional motion sensor, be sure to replace it with one rated for use with LEDs. While conventional light sensors will still work with LED fixtures at first, they will burn out prematurely. The same is true for motion sensors.



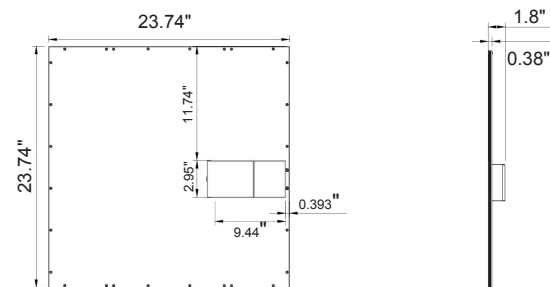
ADJUSTABLE COLOR TEMPERATURE



## Dimensions

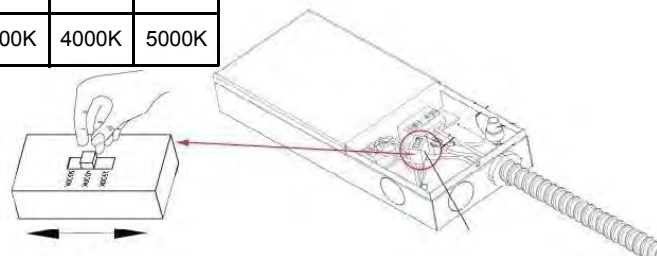
Length: 23.74 in.  
Width: 23.74 in.  
Height: 0.38 in.  
Weight: 6 lbs

## Dimensional Images:



## Switchable CCT:

Slide Switch Position		
Top	Middle	Bottom
3500K	4000K	5000K



SKU #	Kelvin	Lumens	CRI	Wattage	Voltage	DLC?	Mounting	Life Hours	Warranty
PLT-11599	3500K 4000K 5000K	4400-5000	80	40	120-277V	NO	Recessed	50,000	5 Years