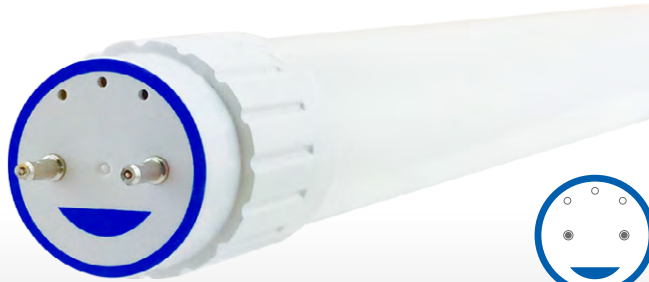


# T8 13W 4FT. BYP TITANIUM LED SERIES



PRO



13W REPLACES

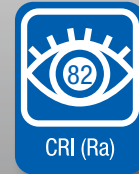


**32W  
Fluo.**

60% Energy Savings

**\$136** Savings per fixture\*

- Wide beam design: 310° light emitting area
- Suitable for use in totally enclosed fixtures
- End-to-end lighting with no dark spots
- Frosted glass tube for increased light diffusion efficiency
- Meets NSF/ANSI Standard 2 requirements
- Built-in universal voltage driver - Bypass installation



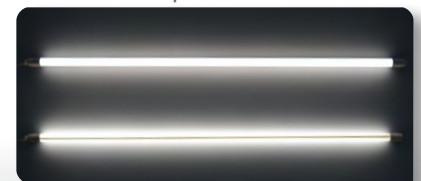
## TUBE FEATURES

### Extra Wide Beam Design - Frosted Glass Body

This lamp uses an innovative coated glass design that diffuses heat and light more evenly than plastic. As a result of its compact light engine, this lamp produces a light emitting area of 310°. This wider beam angle improves a fixture's total light distribution and creates a more complete lighting effect.



Lamp Front View



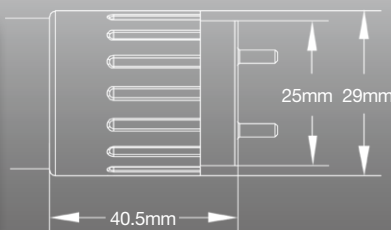
Lamp Back View

### End-to-End Lighting - Micro-Designed Driver

GREEN CREATIVE

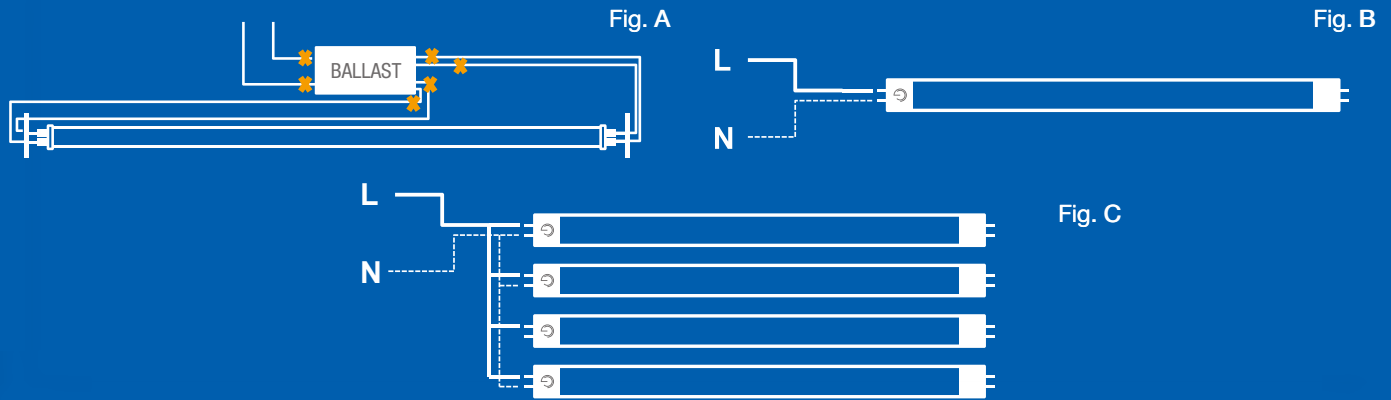


Other LED Tubes



The lamp's micro-designed driver is located within the tube end cap which allows for better thermal performance and no dark spots. The result is powerful and seamless light from end to end.

## BYPASS INSTALLATION



- 🕒 Bypass ballast by cutting all wires as in Fig. A
- 🕒 Directly wire Live + Neutral on a single end as in Fig. B for single tube or as in Fig. C for multiple tubes
- 🕒 Replace shunted lamp holder with non-shunted one if applicable (Instant Start)
- 🕒 Existing fixture maintains original UL compliance thanks to UL1598C tube

## SPECIFICATIONS

Product Model	28405 13T8/4F/830/BYP	28406 13T8/4F/835/BYP	28407 13T8/4F/840/BYP	28408 13T8/4F/850/BYP
Type	T8	T8	T8	T8
Base	Medium Bi-Pin G13	Medium Bi-Pin G13	Medium Bi-Pin G13	Medium Bi-Pin G13
Power (W)	13	13	13	13
Voltage - Frequency	120-277V 50-60Hz	120-277V 50-60Hz	120-277V 50-60Hz	120-277V 50-60Hz
Color Temp. (ANSI)	Warm White 3000K	Neutral White 3500K	Cool White 4000K	Daylight 5000K
CRI (Ra)	82	82	82	82
Typical lumens (lm)	1600	1650	1700	1700
Efficacy (LPW)	123	127	131	131
Light Emitting Area	310°	310°	310°	310°
Beam Angle	160°	160°	160°	160°
Dimmable	No	No	No	No
Power Factor	0.9	0.9	0.9	0.9
THD	<20%	<20%	<20%	<20%
Rated Lifetime - L70 (hrs.)	50,000	50,000	50,000	50,000
Dia. x MOL	1.14"x47.76" (29x1213mm)	1.14"x47.76" (29x1213mm)	1.14"x47.76" (29x1213mm)	1.14"x47.76" (29x1213mm)
Weight (lb. / g)	0.57lb. / 259g	0.57lb. / 259g	0.57lb. / 259g	0.57lb. / 259g

\* Savings per fixture based on \$0.11 / kw energy cost, 12 hrs / day lamp usage, 2x36W fixture / \$10 fluorescent tube, \$45 ballast with 15,000 hr lifetime, \$35 LED tube with 50,000 hr lifetime

\*\* Suitable for use in totally enclosed fixtures

\*\*\* Suitable for damp locations. Not for use where directly exposed to the weather or water

\*\*\*\* Full installation guide and more details available on website