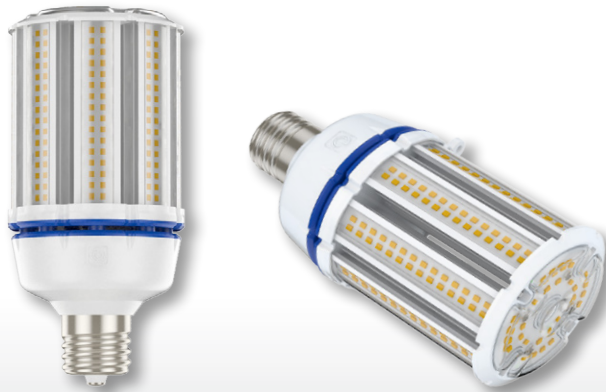


HID LED 68W TITANIUM LED SERIES



PRO



68W REPLACES



175-250W
HID

70% Energy Savings

- ⌚ Direct line voltage 120-277V - Not compatible with ballasts
- ⌚ Designed for use in post top applications
- ⌚ Compatible with EX39 & E39 sockets
- ⌚ Fully omnidirectional 320° beam angle
- ⌚ Available in 4000K & 5000K CCT
- ⌚ Suitable for use in totally enclosed fixtures



HID LED PRODUCT FEATURES

Suitable for Enclosed Fixtures



This HID LED lamp replaces a 175-250W HID and is suitable for use in totally enclosed fixtures. Its high lumen output and exceptional efficacy make it an ideal choice for outdoor post top applications.

CoolSink Technology

The CoolSink passive cooling system allows air to flow freely through the lamp. This unique design uses an increased cooling surface area to reduce the operating temperature of the LED and power supply, thus resulting in longer lamp life and lumen maintenance.



APPLICATIONS

General Lighting



Teardrop Lighting



Post Top Lighting



SPECIFICATIONS

Product Model	98097 68HID/840/277V/EX39	98098 68HID/850/277V/EX39
Type	HID LED	HID LED
Base	EX39 (Compatible with E39)	EX39 (Compatible with E39)
Power (W)	68	68
Voltage - Frequency	120-277V 50/60Hz	120-277V 50/60Hz
Color Temp. (ANSI)	Cool White 4000K	Daylight 5000K
CRI (Ra) (typ.)	82	82
Bare Lamp lumens (lm)	9500	9500
Bare Lamp efficacy (LPW)	140	140
Fixture Lumens (lm)**	6500	6500
Fixture Efficacy (LPW)**	96	96
Beam Angle	320°	320°
Dimmable	No	No
Power Factor	0.9	0.9
Rated Lifetime - L70 (hrs.)	50,000	50,000
Temperature Rating	-4°F/-20°C - 95°F/35°C	-4°F/-20°C - 95°F/35°C
Dia. x MOL	3.86"x8.66"(99x220mm)	3.86"x8.66"(99x220mm)
Weight (lb. / g)	2.2lbs / 996g	2.2lbs / 996g

* Suitable for use in totally enclosed fixtures

*** Suitable for damp locations. Not for use where directly exposed to weather or water

** Fixture lumens and efficacy based on testing in approved luminaire

**** Not suitable for use in horizontal applications