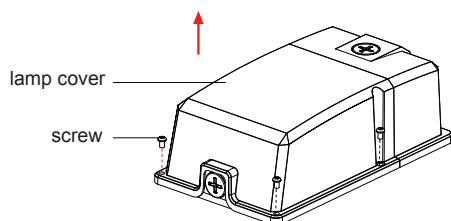
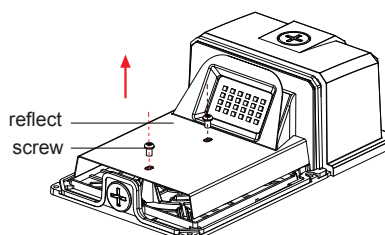


Installation Instruction

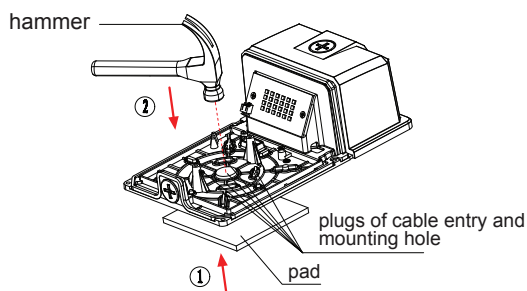
1. Use screwdriver to rive the screws of lamp cover, and then take down the cover.



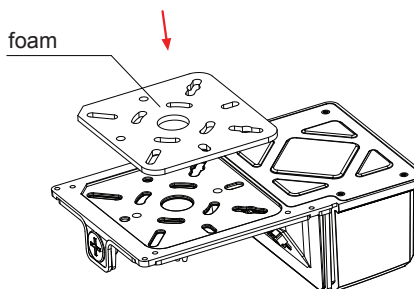
2. Use screwdriver to rive the reflector screws, and then remove the reflector.



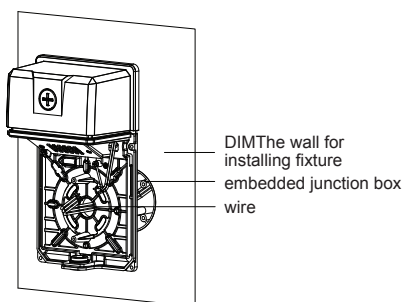
3. Put the pad on the concave side of the lamp. It aims to avoid the damage of back shell when it struck by hammer. Then hammer the plugs of the cable entry and mounting hole.



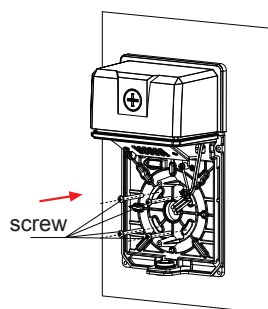
4. Pasting the foam to the back shell. Attention: the hole on both should be matched.



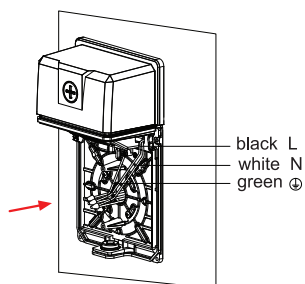
5. Pass the input line in the embedded box through the waterproof pad and then pass it through the lamp base.



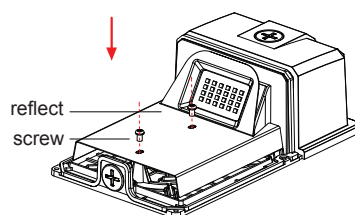
6. Lock the lamp base with the screw on the embedded terminal box.



7. Connect the lamp input line, then put the connected wires into the embedded terminal box.



8. Screw down the reflector with screws.



9. Use screws to tighten up the lamp, then installation completed.

