

C STRIP INSTALLATION INSTRUCTIONS

BOM Table

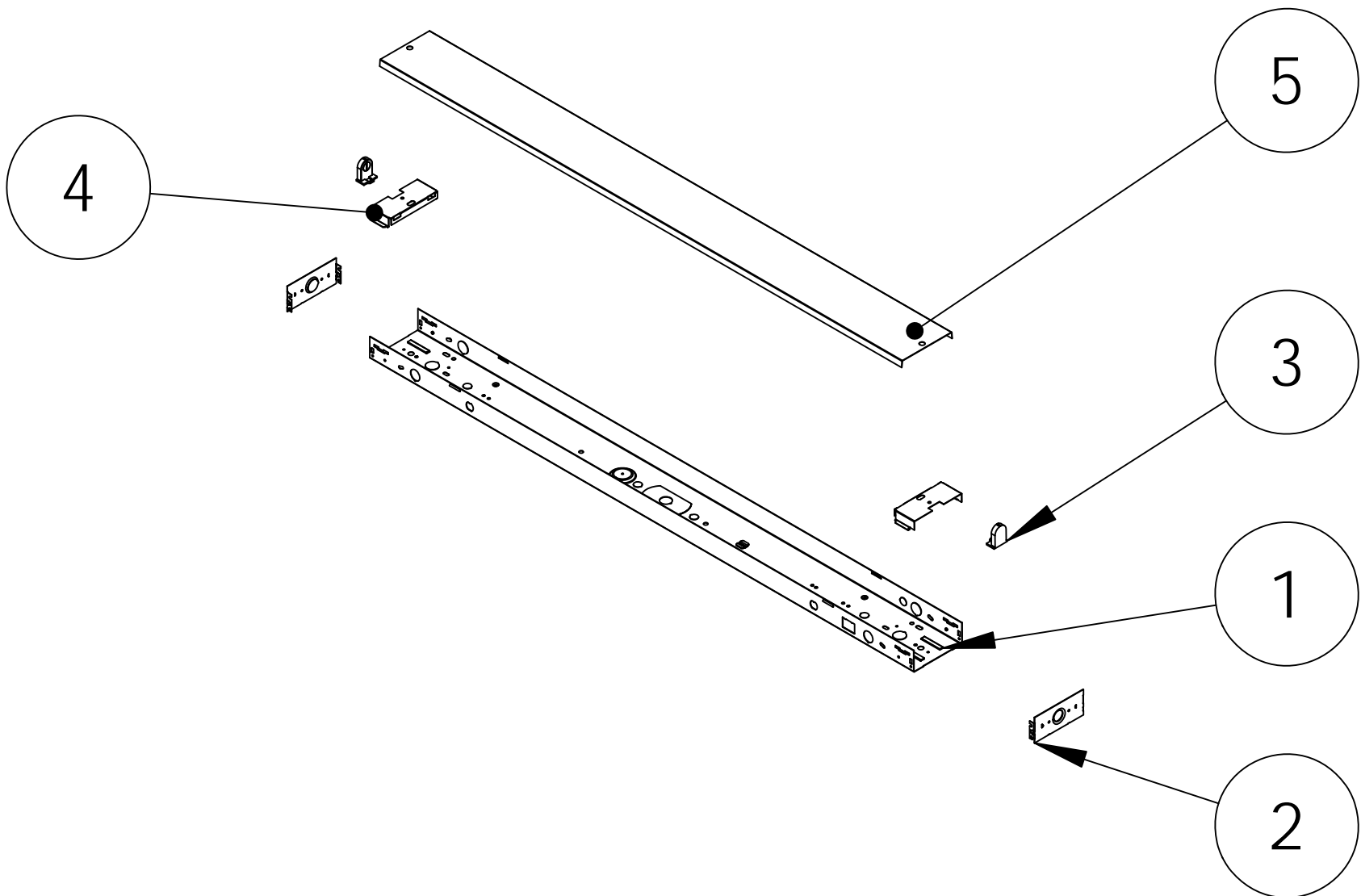
ITEM NO.	PART NUMBER	DESCRIPTION	C STRIP_4FT_ASSY/ QTY.
1	CSTRIP_PAN_4FT	-	1
2	CSTRIP_EC	-	2
3	SOCKET		2
4	C_SB_1LT_T8_ALP		2
5	CSTRIP_BC_AGOS		1

IF SUPPLY WIRES ARE LOCATED WITHIN 3" OF BALLAST, USE WIRES RATED FOR AT LEAST 90° C (194° F)

WARNING-RISK OF FIRE AND ELECTRIC SHOCK. THIS PRODUCT IS TO BE INSTALLED BY A QUALIFIED ELECTRICIAN INLY.

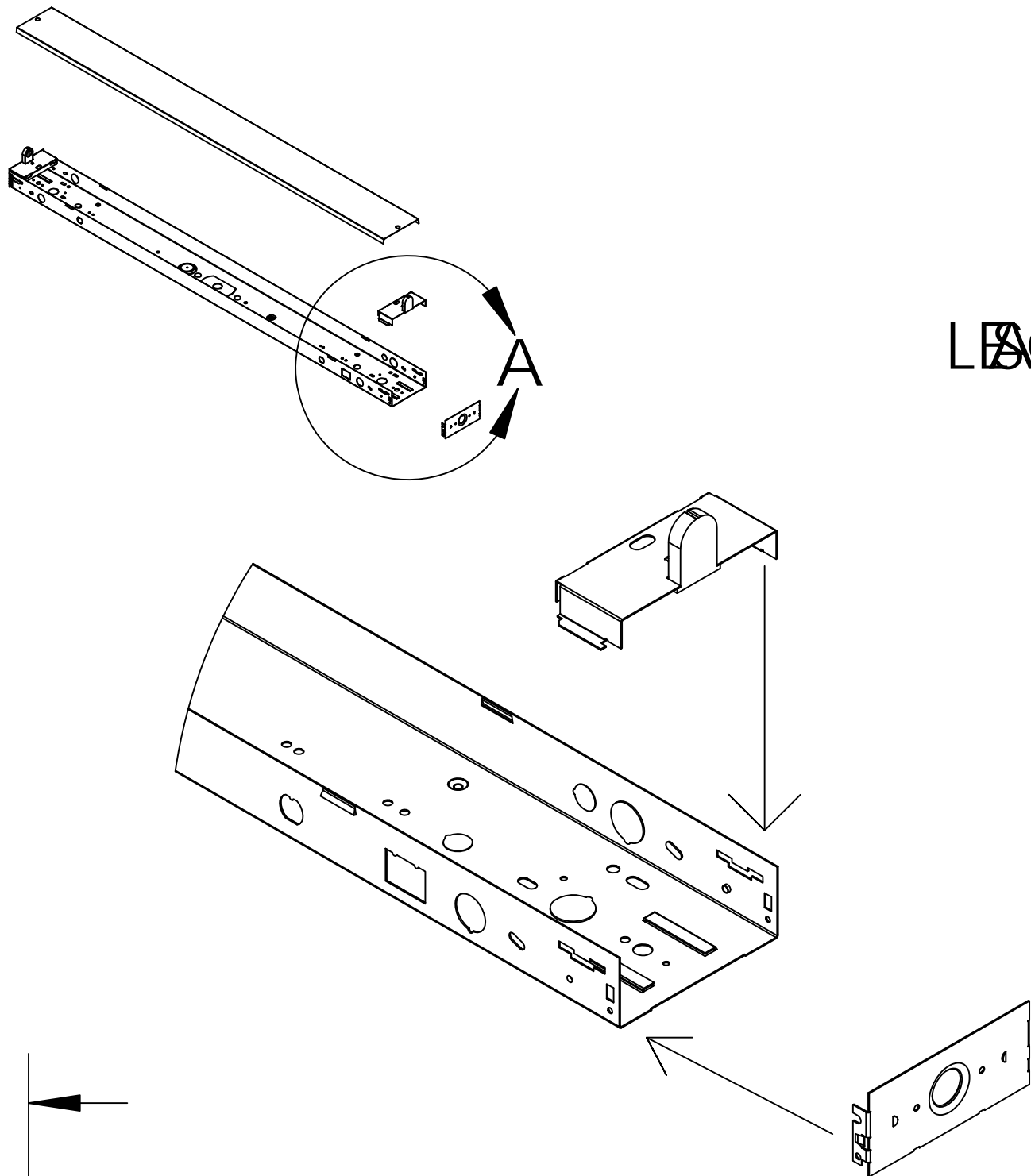
FOR YOUR SAFETY

1.
2.
3.
4.
5.
- READ INSTRUCTIONS BEFORE INSTALL
- HANDLE METAL PARTS WITH CARE TO PREVENT CUTS.
- TURN OFF POWER TO FUSE BOX OR CIRCUIT BREAKER BEFORE INSTALL
- THIS FIXTURE MUST BE GROUNDED IN ORDER TO LIGHT.
- IF YOU DO NOT UNDERSTAND LOCAL WIRING CODES A QUALIFIED ELECTRICIAN SHOULD WIRE THIS FIXTURE.



INSTALLATION

1.
2.
3.
4.
5.
6.
7.
- SNAP SOCKET (3) INTO SB (4).
- SNAP SB (4) WITH SOCKET ATTCHED INTO HOUSING.
- SNAP EC (2) INTO HOUSING
- REMOVE APPROPRAITE KNOCKOUT FROM HOUSING FOR WIRING CONNECTION. CONNECT THE BLACK FIXTURE WIRE TO THE BLACK POWER LINE AND THE WHITE WIRE TO THE WHITE POWER LINE. (WIRE NUTS ARE RECOMMENDED)
- INSTALL FIXTURE BY SECURING TO CEILING OR WALL WITH TOGGLE BOLTS OR SCREWS(NOT INCLUDED). THROUGH HOLES PROVIDED IN TOP OF FIXTURE HOUSING (1).
- ATTACH BC (5) BY SNAPPING COVER OVER A RETAINING LANCE ON HOUSING OR SECURING IT TO THE SB(4) WITH A QUARTER TURN. (NOT INCLUDED)
- INSTALL FLUORESCENT LAMP AND TURN POWER ON.



EDA
LSC: 15

